

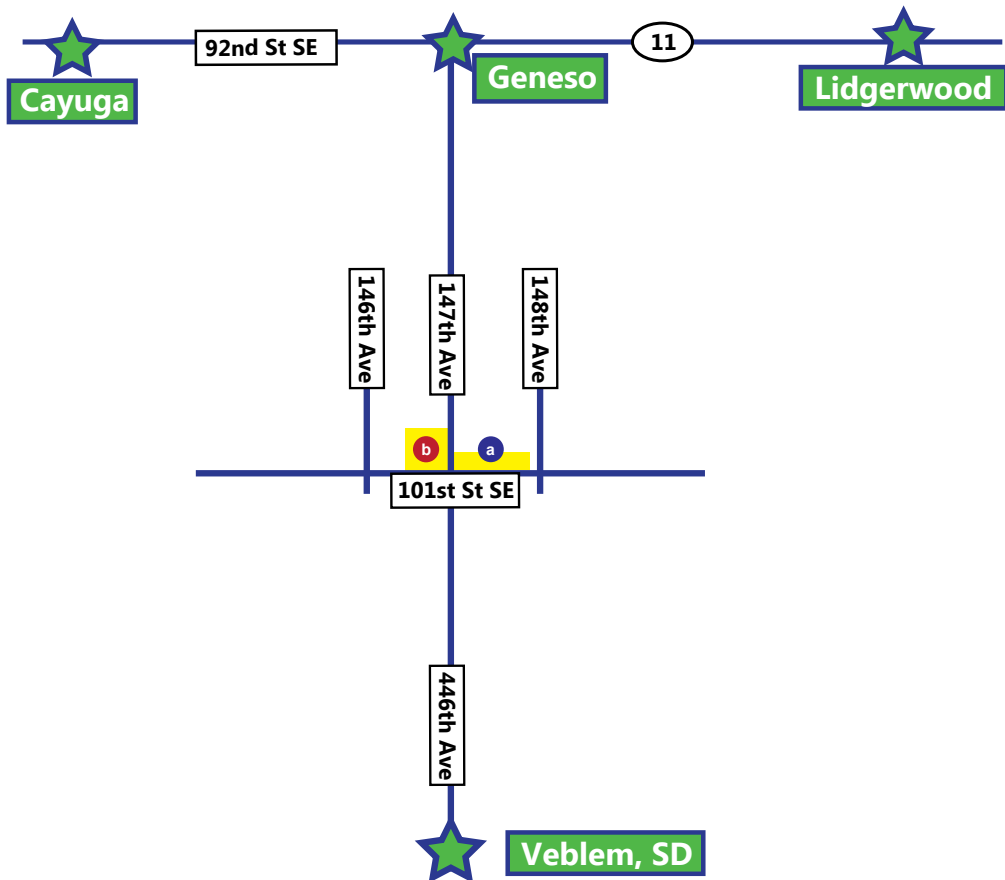
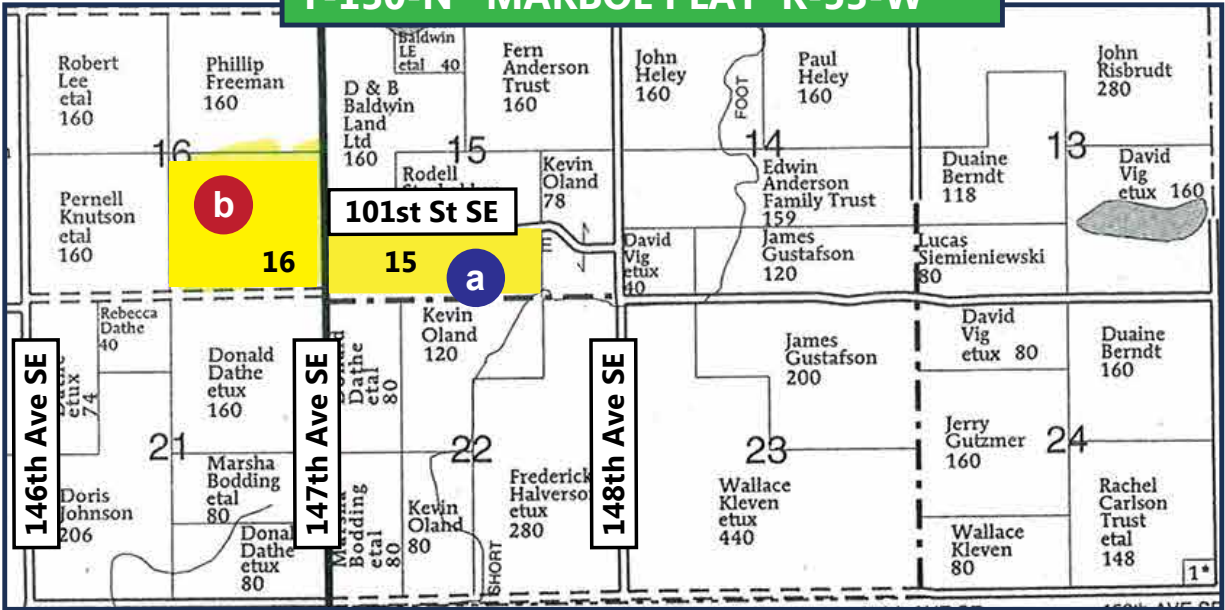


Sargent, ND
FARM LAND FOR SALE
274.0 Acres



Steve Johnson
701-799-5213

T-130-N MARBOE PLAT R-53-W



Directions From Veblem, SD: Go N 6 miles to 101st St SE.

Directions From Lidgerwood, ND: Go W 7 miles to Geneso, ND, then go south 9 miles to the intersection of 147th Ave SE and 101st St SE.

Total Acres 274.00

Tillable Acres 249.67

Total 2017 Discounted Net R.E. taxes \$3787.62

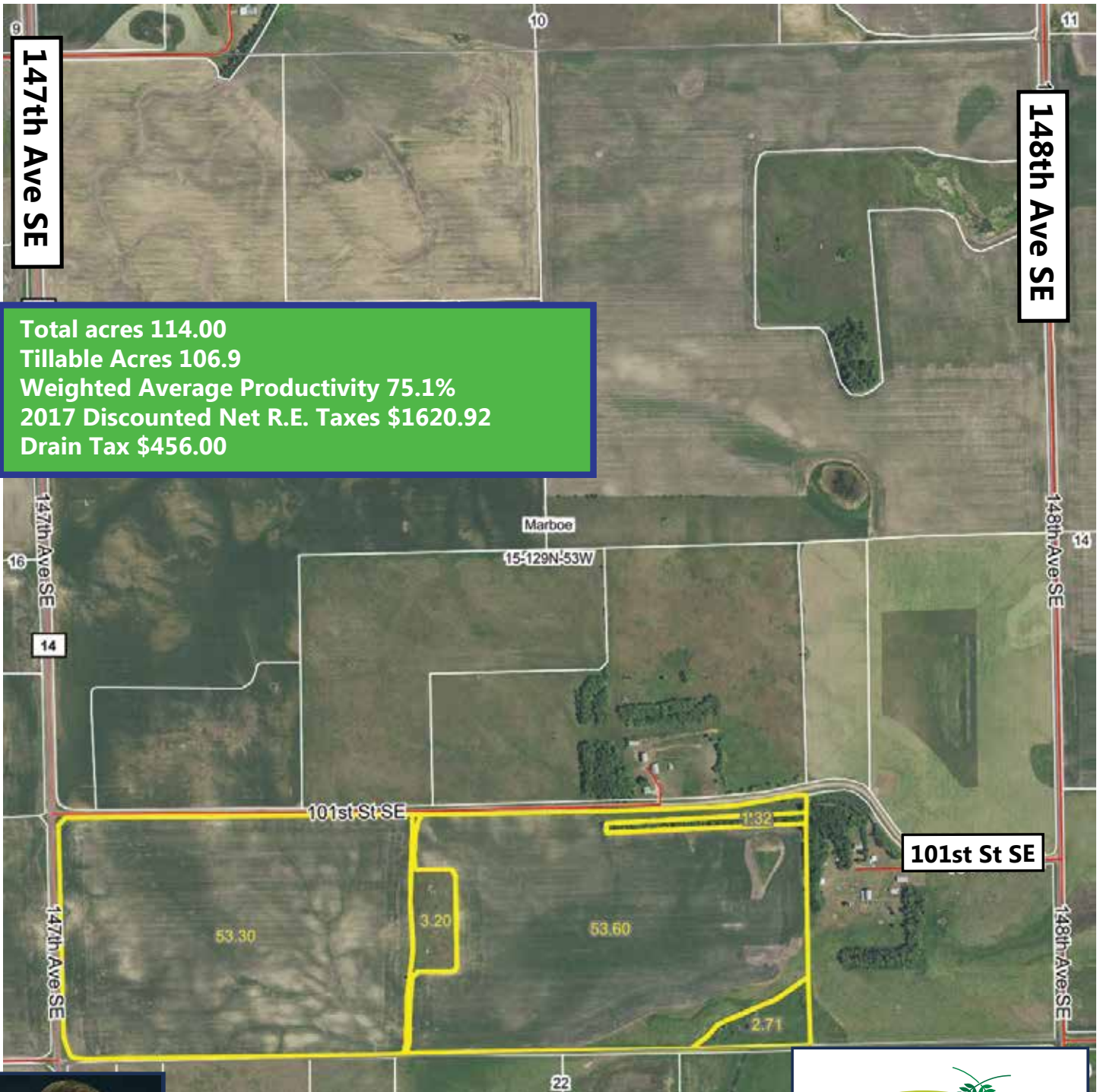
Total Rich/ Sargent County Drain Tax \$1096.00

For Sale Sargent County ND Farmland

SW 1/4 of SE 1/4 & S 1/2 SW 1/4 Section 15-129-53

Approximately 114.00 Acres Plus or Minus

a



Total acres 114.00
Tillable Acres 106.9
Weighted Average Productivity 75.1%
2017 Discounted Net R.E. Taxes \$1620.92
Drain Tax \$456.00



*All information contained herein is believed to be true but should be verified to the buyer's satisfaction in case of error, typographical or otherwise. All information is subject to change without further notice.

Steve D. Johnson
Real Estate Broker
Auctioneer License #976
701-799-5213
steve@johnsonauctionandrealty.com



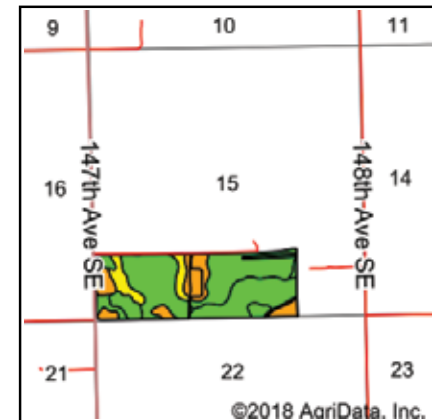
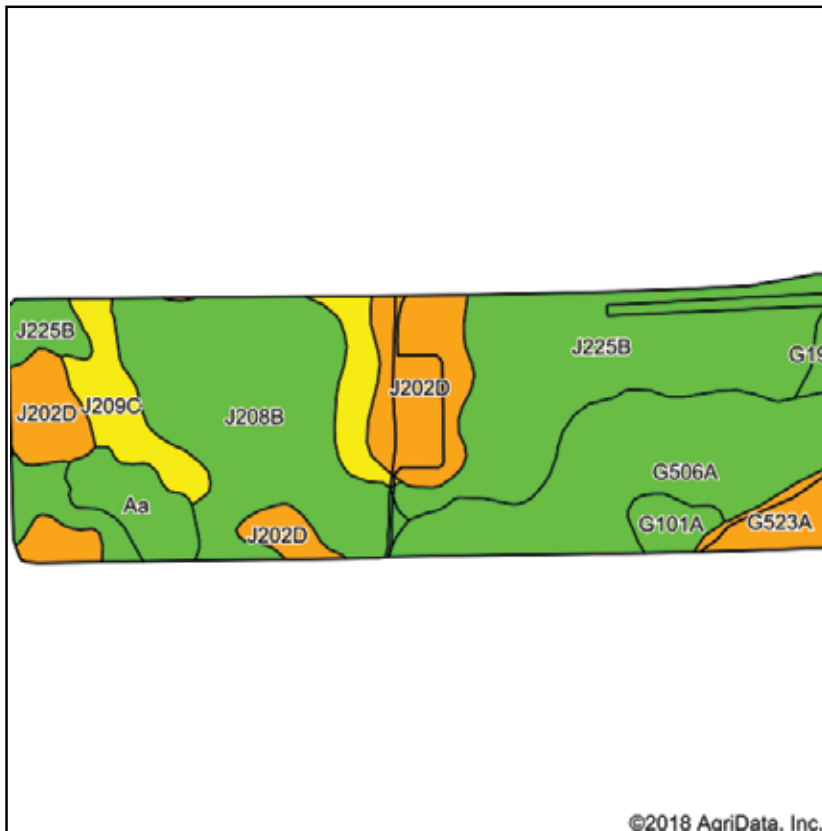
3137 32nd Ave S, Ste 211 | Fargo, ND 58103
www.johnsonauctionandrealty.com

For Sale Sargent County ND Farmland

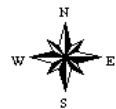
SW 1/4 of SE 1/4 & S 1/2 SW 1/4 Section 15-129-53

Approximately 114.00 Acres Plus or Minus

a



State: **North Dakota**
 County: **Sargent**
 Location: **15-129N-53W**
 Township: **Marboe**
 Acres: **114.13**
 Date: **5/18/2018**



Soils data provided by USDA and NRCS.

Area Symbol: ND081, Soil Area Version: 25

Code	Soil Description	Acres	Percent of field	PI Legend	NonIrr Class *c	Productivity Index	NCCPI Overall
J208B	FormanBuse complex, 2 to 6 percent slopes	28.51	25.0%		Ile	77	64
J225B	FormanAastad complex, 1 to 4 percent slopes	28.29	24.8%		Ile	88	67
G506A	OverlyBearden silty clay loams, 0 to 2 percent slopes	21.15	18.5%		Ilc	88	60
J202D	LangheiBarnes, moderately eroded, complex, 12 to 20 percent slopes	16.32	14.3%		IVe	44	50
J209C	FormanBuse complex, 6 to 12 percent slopes, moderately eroded	9.04	7.9%		IIIe	65	52
Aa	Aastad clay loam, 1 to 3 percent slopes	4.63	4.1%		Ilc	94	73
G523A	LoweFluvaquents, channeled complex, 0 to 2 percent slopes, frequently flooded	3.34	2.9%		VIw	22	5
G101A	HamerlyWyard loams, 0 to 3 percent slopes	2.19	1.9%		Ile	77	56
G193B	FormanAastad loams, 3 to 6 percent slopes	0.66	0.6%		Ile	86	59
Weighted Average						75.2	59.5

*c: Using Capabilities Class Dominant Condition Aggregation Method

Soils data provided by USDA and NRCS.



*All information contained herein is believed to be true but should be verified to the buyer's satisfaction in case of error, typographical or otherwise. All information is subject to change without further notice.

Steve D. Johnson
 Real Estate Broker
 Auctioneer License #976
 701-799-5213
 steve@johnsonauctionandrealty.com



3137 32nd Ave S, Ste 211 | Fargo, ND 58103
 www.johnsonauctionandrealty.com

b



Johnson
Auction & Realty LLC

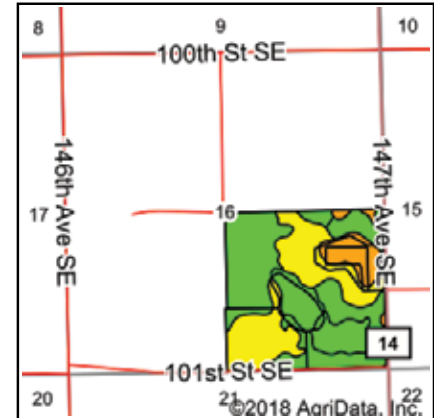
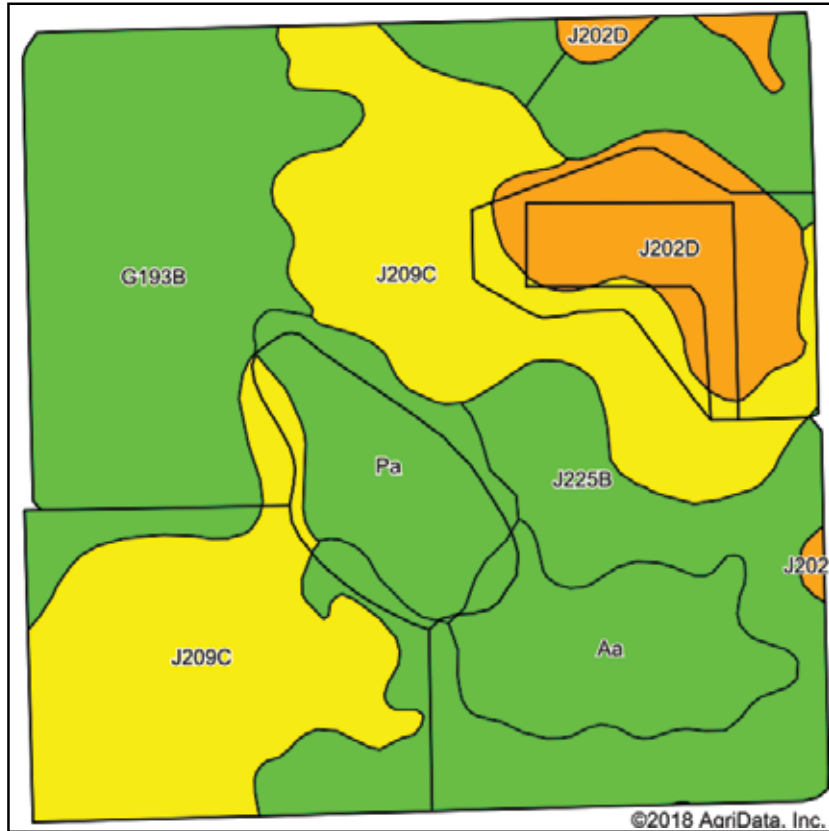
3137 32nd Ave S, Ste 211 | Fargo, ND 58103
www.johnsonauctionandrealty.com

For Sale Sargent County ND Farm Land

SE 1/4 Section 16-129-53

Approximately 160.00 Acres Plus or Minus

b



State: **North Dakota**
 County: **Sargent**
 Location: **16-129N-53W**
 Township: **Marboe**
 Acres: **159.42**
 Date: **5/18/2018**



Soils data provided by USDA and NRCS.

Area Symbol: ND081, Soil Area Version: 25

Code	Soil Description	Acres	Percent of field	PI Legend	NonIrr Class *c	Productivity Index	NCCPI Overall
J209C	FormanBuse complex, 6 to 12 percent slopes, moderately eroded	50.38	31.6%		IIIe	65	52
G193B	FormanAastad loams, 3 to 6 percent slopes	35.93	22.5%		IIe	86	59
J225B	FormanAastad complex, 1 to 4 percent slopes	35.04	22.0%		IIe	88	67
J202D	LangheiBarnes, moderately eroded, complex, 12 to 20 percent slopes	14.40	9.0%		IVe	44	50
Aa	Aastad clay loam, 1 to 3 percent slopes	12.54	7.9%		IIc	94	73
Pa	Parnell silty clay loam, occasionally ponded, 0 to 1 percent slopes	11.13	7.0%		IIlw	71	59
Weighted Average						75.6	58.8

*c: Using Capabilities Class Dominant Condition Aggregation Method

Soils data provided by USDA and NRCS.



*All information contained herein is believed to be true but should be verified to the buyer's satisfaction in case of error, typographical or otherwise. All information is subject to change without further notice.

Steve D. Johnson
 Real Estate Broker
 Auctioneer License #976
 701-799-5213
 steve@johnsonauctionandrealty.com



3137 32nd Ave S, Ste 211 | Fargo, ND 58103
 www.johnsonauctionandrealty.com

a

Section 15

Total acres 114.00

Tillable Acres 106.9

Weighted Average Productivity 75.1%

2017 Discounted Net R.E. Taxes \$1620.92

Drain Tax \$456.00

b

Section 16

Total Acres 160.00

Tillable Acres 142.77

Weighted Average productivity 75.7%

2017 Discounted Net R.E. taxes \$2166.70

Rich/ Sargent County Drain Tax \$640.00

Total Acres 274.00

Tillable Acres 249.67

Total 2017 Discounted Net R.E. taxes \$3787.62

Total Rich/ Sargent County Drain Tax \$1096.00



*All information contained herein is believed to be true but should be verified to the buyer's satisfaction in case of error, typographical or otherwise. All information is subject to change without further notice.

Steve D. Johnson

Real Estate Broker

Auctioneer License #976

701-799-5213

steve@johnsonauctionandrealty.com

3137 32nd Ave S, Ste 211 | Fargo, ND 58103

www.johnsonauctionandrealty.com



701-799-5213
steve@johnsonauctionandrealty.com

3137 32nd Ave S, Ste 211 | Fargo, ND 58103
www.johnsonauctionandrealty.com

