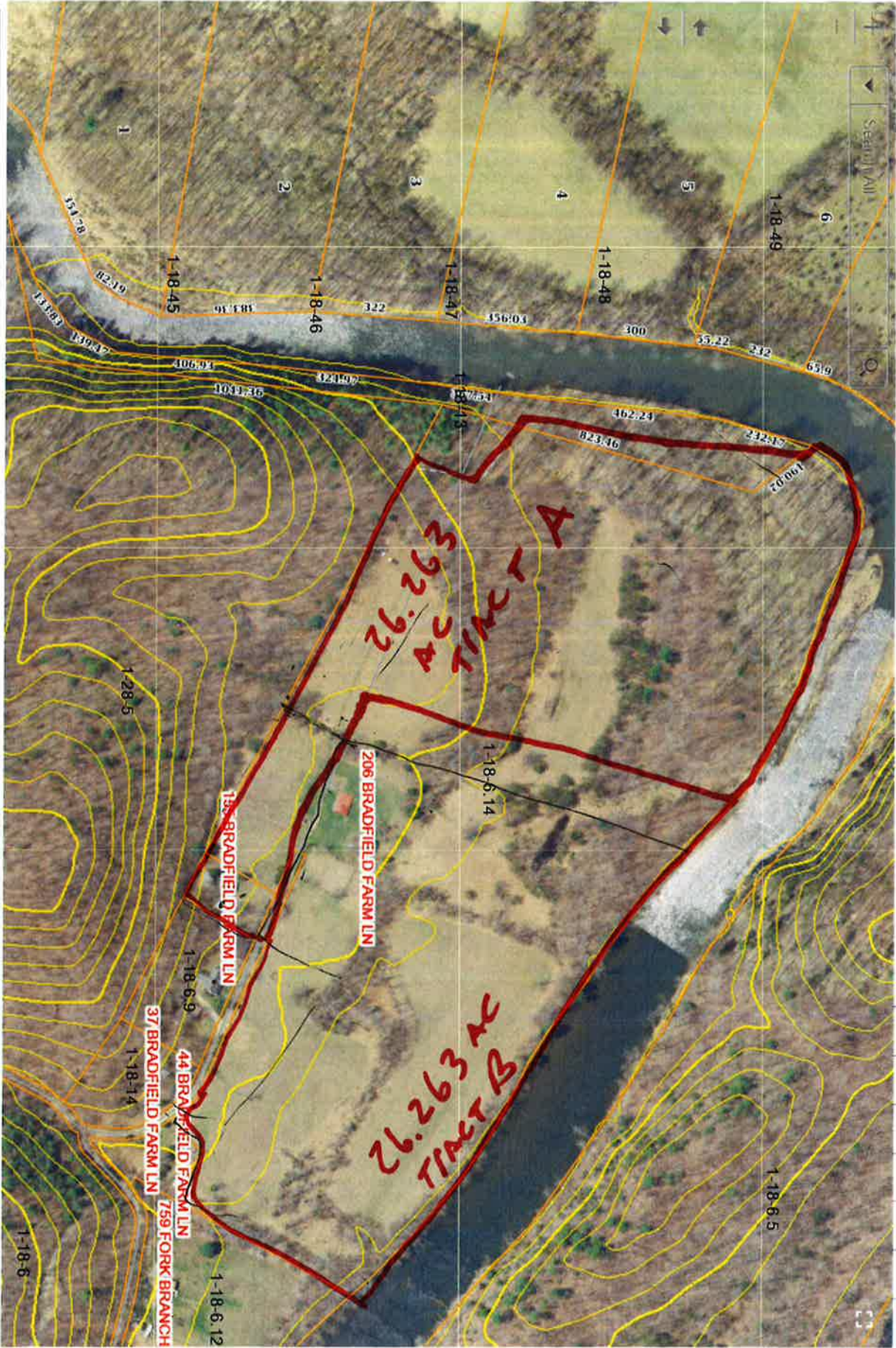
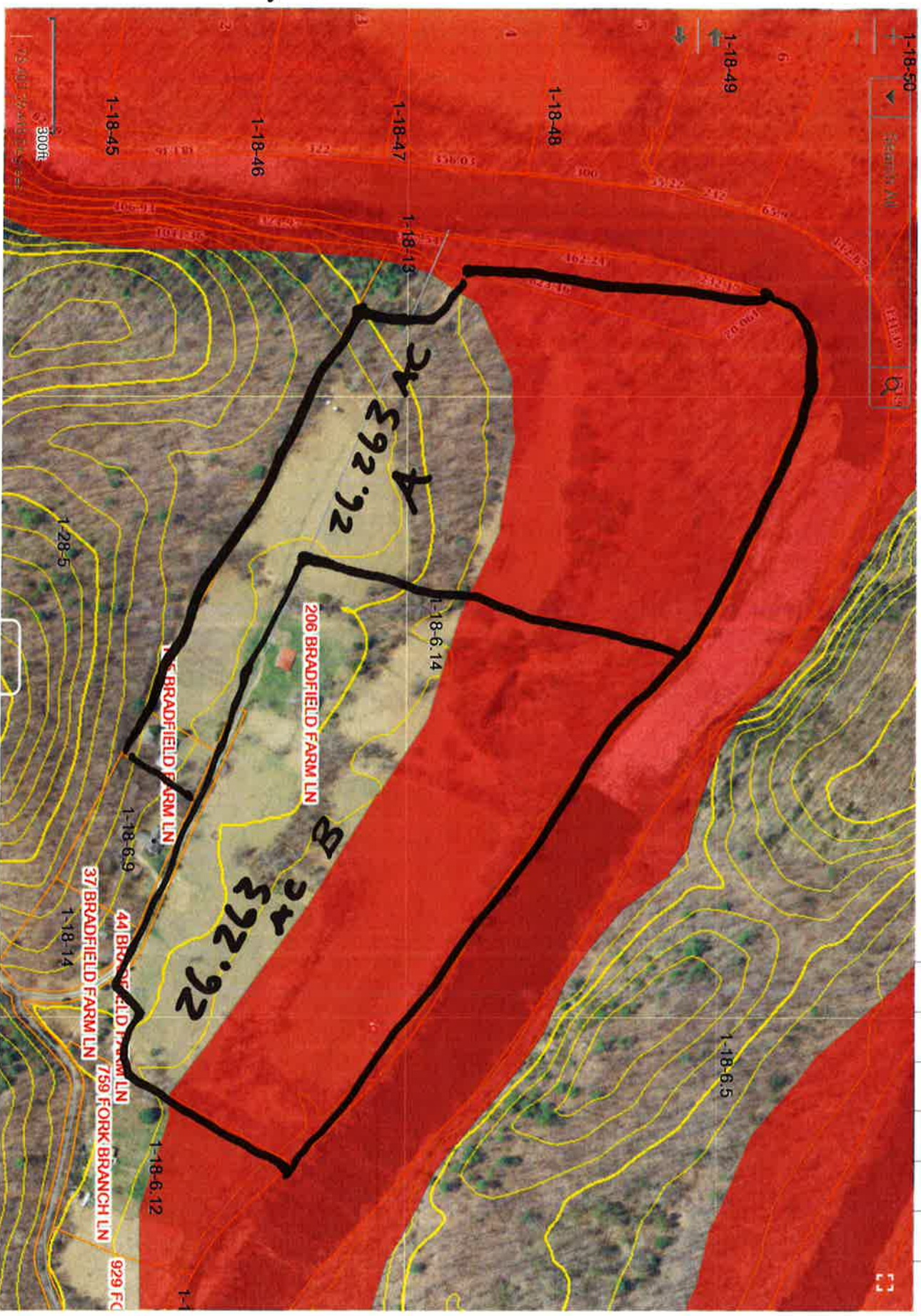


Hampshire Parcel Viewer



Hampshire Parcel Viewer



Flood map

NOTE A - TITLE: THIS IS A SURVEY AND DIVISION OF A 51.876 ACRE TRACT (BY RESURVEY FOUND TO CONTAIN 51,868 TOTAL ACRES) AND A 0.057 ACRE TRACT (BY RESURVEY FOUND TO CONTAIN 0.058 TOTAL ACRES) AND IS OWNED NOW BY FRED HEPNER AND CHERYL A. HEPNER, HUSBAND AND WIFE. D. B. 401 PG. 129, D. B. 301, PG. 421 SEE D. B. 421. PG. 425 (PLAT) AND SEE D. B. 401 PG. 605 (PLAT), SEE TIA MAP 18. PARCELS 6, 14 AND 6, 13.

NOTE C - THIS SURVEY OF TRACT NO. A CONTAINING 26.263 TOTAL ACRES IS PARTLY LOCATED WITHIN THE 100-YEAR FLOOD PLAIN AND A PORTION OF TRACT NO. B CONTAINING 26.263 TOTAL ACRES IS LOCATED PARTLY WITHIN THE 100-YEAR FLOOD PLAIN INDICATED BY FEMA FLOOD INSURANCE RATE MAP, EFFECTIVE DATE NOVEMBER 7, 2002 ON MAP NO. 54022C01700C

NOTE E: APPROXIMATELY ONE ACRE OVERLAP BETWEEN WHITACRE SURVEY OF 52.533 ACRES (SEE D.B. 222, PG. 66) AND THE C.W.W. STULTZ 3.92 ACRE SURVEY (SEE D.B. 383, PG. 212). HOWEVER, THE STULTZ SURVEY CANNOT BE LOCATED ACCURATELY AND IS ONLY SHOWN NOW AS APPROXIMATE.

25.605 TOTAL ACRES
SEE TM 18, PART OF PCL 6.14

TRACT NO. B=26.263 TOTAL ACRES
(REMAINDER)
SEE TM 18, PART OF PCL 6.14
(SEE NOTE NO. G FOR RMV)

A map of the study area in Chongqing, China. The map shows the Jialing River flowing through the city. The study site is located on the right bank of the river, near the town of Chongqing. The map includes labels for 'TOWN OF CHONGQING', 'JIALING RIVER', and 'STUDY SITE'. A scale bar indicates a distance of 1 km.

LEGEND:

CORNER NO. 1 IS AN AXLE. FOUND.
CORNER NOS. A, 10, 11, 12, H, K, V, W & T ARE POINTS IN THE
CENTERLINE OF THE EXISTING ROAD.
CORNER NO. 2 IS A 10" GUM TREE AT A FENCE CORNER. FOUND
FROM WHICH A 1" AXLE. FOUND. BEARS N56 DEGREES - 38
MINUTES - 48 SECONDS W AT 0.74 FEET
CORNER NO. 3 IS A CALCULATED POINT FROM WHICH AN AXLE.
FOUND. BEARS S 87 DEGREES - 02 MINUTES - 20 SECOND

AT 0.13 FEET.
CORNER NO. 4 IS AN AXLE, FOUND.
CORNER NOS. 5, 6, 7, 8, 9, 17, 18 & 19 ARE POINTS AT THE LOW
WATER OF THE RIVER.
CORNER NOS. B, F, G, P, 23 & 25 ARE 5/8" CAPPED DAVY REBARS.

SET.
CORNER NOS. C, D, E, L AND M ARE METAL T-POST TOP RED, SET.
CORNER NOS. 13, 22, 24, 26 & N ARE 5/8" CAPPED MORELAND
REBAR, SET.
CORNER NO. 14 IS THE BASE OF A BENT 5/8" REBAR, FOUND.
CORNER NOS. 15 AND 16 ARE 5/8" REBAR, FOUND.

CORNER NO. 20 IS A POINT AT THE LOW WATER MARK OF THE RIVER AT THREE MAPLE TREES.
CORNER NO. 19 IS A POINT THE CORNER IS NOW GONE.
CORNER NO. 18 IS A UTILITY POLE NO. M25833.
CORNER NO. 17 IS A 20" CHESTNUT OAK SNAG AT A FENCE CORNER

AND A STONEPILE, FOUND.
CORNER NO. 7 IS A WELL CASING.

Line	Reading	Distance
1-A	N 234° 55' E	48.34
1-B	N 234° 55' E	101.45
1-C	N 234° 55' E	31.72
1-D	N 141° 01' W	11.72
1-E	N 141° 01' W	122.82
1-F	N 55° 20' E	218.88
1-G	N 80° 25' E	218.88
1-H	N 80° 25' E	228.28
1-I	N 80° 25' E	228.28
1-J	N 230° 26' W	206.22
1-K	N 230° 26' W	206.22
1-L	N 230° 26' W	206.22
1-M	N 230° 26' W	206.22
1-N	N 230° 26' W	206.22
1-O	N 230° 26' W	206.22
1-P	N 230° 26' W	206.22
1-Q	N 230° 26' W	206.22
1-R	N 230° 26' W	206.22
1-S	N 230° 26' W	206.22
1-T	N 230° 26' W	206.22
1-U	N 230° 26' W	206.22
1-V	N 230° 26' W	206.22
1-W	N 230° 26' W	206.22
1-X	N 230° 26' W	206.22
1-Y	N 230° 26' W	206.22
1-Z	N 230° 26' W	206.22
1-AA	N 230° 26' W	206.22
1-AB	N 230° 26' W	206.22
1-AC	N 230° 26' W	206.22
1-AD	N 230° 26' W	206.22
1-AE	N 230° 26' W	206.22
1-AF	N 230° 26' W	206.22
1-AG	N 230° 26' W	206.22
1-AH	N 230° 26' W	206.22
1-AI	N 230° 26' W	206.22
1-AJ	N 230° 26' W	206.22
1-AK	N 230° 26' W	206.22
1-AL	N 230° 26' W	206.22
1-AM	N 230° 26' W	206.22
1-AN	N 230° 26' W	206.22
1-AO	N 230° 26' W	206.22
1-AP	N 230° 26' W	206.22
1-AQ	N 230° 26' W	206.22
1-AR	N 230° 26' W	206.22
1-AS	N 230° 26' W	206.22
1-AT	N 230° 26' W	206.22
1-AU	N 230° 26' W	206.22
1-AV	N 230° 26' W	206.22
1-AW	N 230° 26' W	206.22
1-AX	N 230° 26' W	206.22
1-AY	N 230° 26' W	206.22
1-AZ	N 230° 26' W	206.22
1-BA	N 230° 26' W	206.22
1-BB	N 230° 26' W	206.22
1-BC	N 230° 26' W	206.22
1-BD	N 230° 26' W	206.22
1-BE	N 230° 26' W	206.22
1-BF	N 230° 26' W	206.22
1-BG	N 230° 26' W	206.22
1-BH	N 230° 26' W	206.22
1-BI	N 230° 26' W	206.22
1-BJ	N 230° 26' W	206.22
1-BK	N 230° 26' W	206.22
1-BL	N 230° 26' W	206.22
1-BM	N 230° 26' W	206.22
1-BN	N 230° 26' W	206.22
1-BO	N 230° 26' W	206.22
1-BP	N 230° 26' W	206.22
1-BQ	N 230° 26' W	206.22
1-BR	N 230° 26' W	206.22
1-BS	N 230° 26' W	206.22
1-BT	N 230° 26' W	206.22
1-BU	N 230° 26' W	206.22
1-BV	N 230° 26' W	206.22
1-BW	N 230° 26' W	206.22
1-BX	N 230° 26' W	206.22
1-BY	N 230° 26' W	206.22
1-BZ	N 230° 26' W	206.22
1-CA	N 230° 26' W	206.22
1-CB	N 230° 26' W	206.22
1-CC	N 230° 26' W	206.22
1-CD	N 230° 26' W	206.22
1-CE	N 230° 26' W	206.22
1-CF	N 230° 26' W	206.22
1-CG	N 230° 26' W	206.22
1-CH	N 230° 26' W	206.22
1-CI	N 230° 26' W	206.22
1-CJ	N 230° 26' W	206.22
1-CK	N 230° 26' W	206.22
1-CL	N 230° 26' W	206.22
1-CM	N 230° 26' W	206.22
1-CN	N 230° 26' W	206.22
1-CO	N 230° 26' W	206.22
1-CP	N 230° 26' W	206.22
1-CQ	N 230° 26' W	206.22
1-CR	N 230° 26' W	206.22
1-CS	N 230° 26' W	206.22
1-CT	N 230° 26' W	206.22
1-CU	N 230° 26' W	206.22
1-CV	N 230° 26' W	206.22
1-CW	N 230° 26' W	206.22
1-CX	N 230° 26' W	206.22
1-CY	N 230° 26' W	206.22
1-CZ	N 230° 26' W	206.22
1-DA	N 230° 26' W	206.2

[illegible][illegible]

NOTE 7. "THE 12' WIDE RIGHT OF WAY IS TO BEGIN AT THE PRESENT ROADWAY LOCATED AT THE BARN PRESENTLY OWNED BY THE GRANTORS; THENCE IN A WESTERLY DIRECTION AND IN A STRAIGHT LINE, PASSES THROUGH TWO GATES AND PROCEEDING TO THE EAST, ACROSS SAID RIGHT OF WAY, TO THE PRESERVE THE RIGHT TO MAINTAIN THE GATES ACROSS SAID RIGHT OF WAY, AND TO THE PRESERVE THE RIGHT TO MAINTAIN THE PRESERVE AND AGREES TO KEEP SAID GATES CLOSED AT ALL TIMES. THE GRANTORS RESERVANTS AND AGREES TO KEEP SAID WAYS THEMSELVES, THEIR HEIRS AND ASSIGNS, AND IT IS FURTHER UNDERSTOOD AND AGREED BETWEEN THE PARTIES HERETO THAT SAID RIGHT OF WAY SHALL BE USED BY THE GRANTORS AND THEIR HEIRS AND ASSIGNS TO BE USED BY THE GRANTORS SOLELY FOR THE PURPOSE OF INSTALLING AND MAINTAINING THE GATES DESCRIBED AND CONVEYED." (THE 06 JC 460, PG. 595, SEE THE 18TH PG. 25. - NOW JANENE K. PAYNE FORMERLY JANICE K. DOLL.)

WILLIAM D. MICHAEL, ET AL.
1.7 ACRES (ASSESSED)
WB 39, PG. 569
SEE D.B. 295, PG. 85
TAX MAP 18, PARCEL 14

ABOUT 0.6 MILES FROM THE
FORK OF THE ROAD TO THE
INTERSECTION WITH ROUTE
NO. 127 "BLOOMERY PIKE"
AND VOLCANO LN.

FOR TITLE SEE NOTE A:
PLAT NO. D18-021
DATE: 11/29/2018
SCALE: 1" = 200'
SHEET 1 OF 1

R & S SERVICES, INC.
 RICKIE C. DAVY, PS NO. 535
 BOX 87, CAPON BRIDGE, WV 26711
 (304) 856-3165

SURVEYOR - LICENSE NO. 535

SURVEY UNDER MY HAND THIS 28TH DAY
 OF NOVEMBER, 2016.

CHAS. LINSEY, JR., 44-447 THE 26TH DAY
OF NOVEMBER, 2018

EXPIRATION - LICENSE NO. 2017

**Moreland's Surveying
& Consulting, Inc.**
Sunrise Professional Building
22351 Northwestern Pike
Romey, WV 26757