

IOWA
BUCHANAN
Form: FSA-156EZ



United States Department of Agriculture
Farm Service Agency

Abbreviated 156 Farm Record

FARM : 6620
Prepared : Apr 11, 2019
Crop Year : 2019

Tract 1456 Continued ...

TOTAL 227.77 0.00

NOTES

Tract Number : 23929 ✓
Description :
FSA Physical Location : IOWA/BUCHANAN
ANSI Physical Location : IOWA/BUCHANAN
BIA Unit Range Number :
HEL Status : NHEL: No agricultural commodity planted on undetermined fields
Wetland Status : Tract does not contain a wetland
WL Violations : None
Owners : BLIN FARMS LIMITED PARTNERSHIP
Other Producers : None
Recon ID : None

Tract Land Data

Farm Land	Cropland	DCP Cropland	WBP	WRP	CRP	GRP	Sugarcane
208.96	208.96	208.96	0.00	0.00	0.00	0.00	0.00
State Conservation	Other Conservation	Effective DCP Cropland	Double Cropped	MPL	EWP	DCP Ag. Rel Activity	Broken From Native Sod
0.00	0.00	208.96	0.00	0.00	0.00	0.00	0.00

DCP Crop Data

Crop Name	Base Acres	CCC-505 CRP Reduction Acres	CTAP Yield	PLC Yield
Corn	156.27	0.00	0	162
Soybeans	52.69	0.00	0	55

TOTAL 208.96 0.00

NOTES

In accordance with Federal civil rights law and U.S. Department of Agriculture (USDA) civil rights regulations and policies, the USDA, its Agencies, offices, and employees, and institutions participating in or administering USDA programs are prohibited from discriminating based on race, color, national origin, religion, sex, gender identity (including gender expression), sexual orientation, disability, age, marital status, family/parental status, income derived from a public assistance program, political beliefs, or reprisal or retaliation for prior civil rights activity, in any program or activity conducted or funded by USDA (not all bases apply to all programs). Remedies and complaint filing deadlines vary by program or incident.

Persons with disabilities who require alternative means of communication for program information (e.g., Braille, large print, audiotape, American Sign Language, etc.) should contact the responsible Agency or USDA's TARGET Center at (202) 720-2600 (voice and TTY) or contact USDA through the Federal Relay Service at (800) 877-8339. Additionally, program information may be made available in languages other than English.

To file a program discrimination complaint, complete the USDA Program Discrimination Complaint Form, AD-3027, found online at http://www.ascr.usda.gov/complaint_filing_cust.html and at any USDA office or write a letter addressed to USDA and provide in the letter all of the information requested in the form. To request a copy of the complaint form, call (866) 632-9992. Submit your completed form or letter to USDA by: (1) mail: U.S. Department of Agriculture Office of the Assistant Secretary for Civil Rights 1400 Independence Avenue, SW Washington, D.C. 20250-9410; (2) fax: (202) 690-7442; or (3) e-mail: program.intake@usda.gov. USDA is an equal opportunity provider, employer, and lender.

IOWA
BUCHANAN

Form: FSA-156EZ

See Page 2 for non-discriminatory Statements.



United States Department of Agriculture
Farm Service Agency

Abbreviated 156 Farm Record

FARM : 6786

Prepared : Apr 11, 2019

Crop Year : 2019

Operator Name : BLIN FARMS LIMITED PARTNERSHIP
Farms Associated with Operator : 19-019-445, 19-019-5731, 19-019-6620, 19-019-6622, 19-019-6786, 19-019-6795, 19-019-7076, 19-019-7176
CRP Contract Number(s) : None
Recon ID : 19-019-2016-84

Farm Land Data

Farmland	Cropland	DCP Cropland	WBP	WRP	CRP	GRP	Sugarcane	Farm Status	Number Of Tracts
87.25	86.64	86.64	0.00	0.00	0.00	0.00	0.00	Active	1
State Conservation	Other Conservation	Effective DCP Cropland	Double Cropped		MPL	Acre Election	EWP	DCP Ag.Rel. Activity	Broken From Native Sod
0.00	0.00	86.64	0.00		0.00		0.00	0.00	0.00

Crop Election Choice

ARC Individual	ARC County	Price Loss Coverage
None	CORN, SOYBN	None

DCP Crop Data

Crop Name	Base Acres	CCC-505 CRP Reduction Acres	CTAP Yield	PLC Yield	HIP
Corn	77.80	0.00	0	150	
Soybeans	8.80	0.00	0	43	

TOTAL 86.60 0.00

NOTES

Tract Number : 1233 ✓

Description : D7-NE/36
FSA Physical Location : IOWA/BUCHANAN
ANSI Physical Location : IOWA/BUCHANAN
BIA Unit Range Number :
HEL Status : NHEL: No agricultural commodity planted on undetermined fields
Wetland Status : Tract does not contain a wetland
WL Violations : None
Owners : BLIN FARMS LIMITED PARTNERSHIP
Other Producers : None
Recon ID : None

Tract Land Data

Farm Land	Cropland	DCP Cropland	WBP	WRP	CRP	GRP	Sugarcane
87.25	86.64	86.64	0.00	0.00	0.00	0.00	0.00
State Conservation	Other Conservation	Effective DCP Cropland	Double Cropped	MPL	EWP	DCP Ag. Rel Activity	Broken From Native Sod
0.00	0.00	86.64	0.00	0.00	0.00	0.00	0.00

DCP Crop Data

Crop Name	Base Acres	CCC-505 CRP Reduction Acres	CTAP Yield	PLC Yield
Corn	77.80	0.00	0	150
Soybeans	8.80	0.00	0	43

IOWA
BUCHANAN
Form: FSA-156EZ



United States Department of Agriculture
Farm Service Agency

FARM : 6786
Prepared : Apr 11, 2019
Crop Year : 2019

Abbreviated 156 Farm Record

Tract 1233 Continued ...

TOTAL	86.60	0.00
-------	-------	------

NOTES

In accordance with Federal civil rights law and U.S. Department of Agriculture (USDA) civil rights regulations and policies, the USDA, its Agencies, offices, and employees, and institutions participating in or administering USDA programs are prohibited from discriminating based on race, color, national origin, religion, sex, gender identity (including gender expression), sexual orientation, disability, age, marital status, family/parental status, income derived from a public assistance program, political beliefs, or reprisal or retaliation for prior civil rights activity, in any program or activity conducted or funded by USDA (not all bases apply to all programs). Remedies and complaint filing deadlines vary by program or incident.

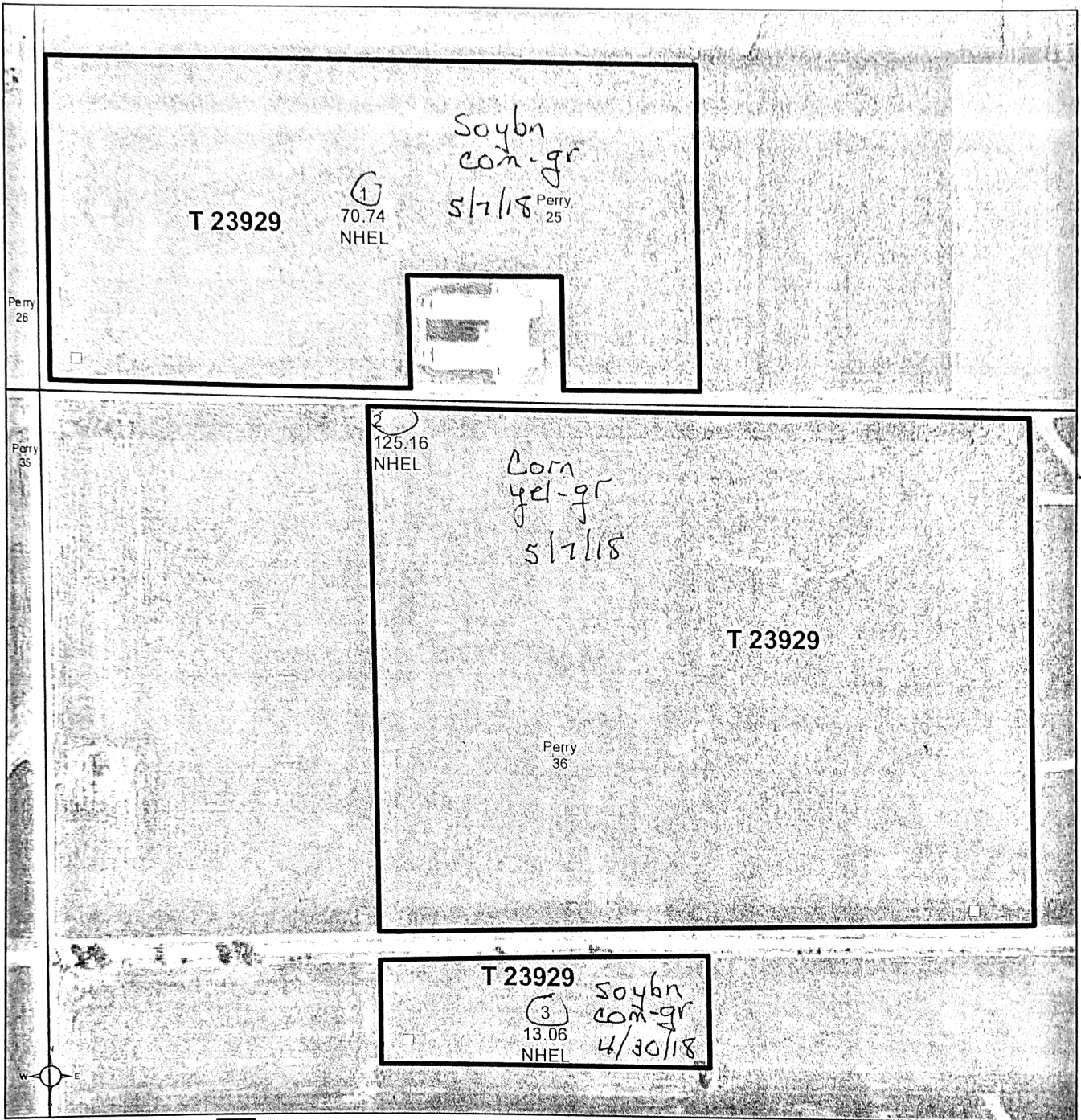
Persons with disabilities who require alternative means of communication for program information (e.g., Braille, large print, audiotape, American Sign Language, etc.) should contact the responsible Agency or USDA's TARGET Center at (202) 720-2600 (voice and TTY) or contact USDA through the Federal Relay Service at (800) 877-8339. Additionally, program information may be made available in languages other than English.

To file a program discrimination complaint, complete the USDA Program Discrimination Complaint Form, AD-3027, found online at http://www.ascr.usda.gov/complaint_filing_cust.html and at any USDA office or write a letter addressed to USDA and provide in the letter all of the information requested in the form. To request a copy of the complaint form, call (866) 632-9992. Submit your completed form or letter to USDA by: (1) mail: U.S. Department of Agriculture Office of the Assistant Secretary for Civil Rights 1400 Independence Avenue, SW Washington, D.C. 20250-9410; (2) fax: (202) 690-7442; or (3) e-mail: program.intake@usda.gov. USDA is an equal opportunity provider, employer, and lender.



United States
Department of
Agriculture

Buchanan County, Iowa

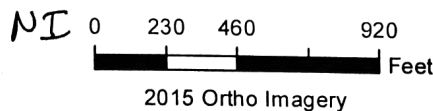


Common Land Unit ☐ PLSS

- ☐ Cropland
- ☐ Tract Boundary

Wetland Determination Identifiers

- Restricted Use
- ▽ Limited Restrictions
- Exempt from Conservation
- Compliance Provisions



2018 Program Year
Map Created December 07, 2017

100%
Blin Pfr.

Farm 6620
Tract 23929

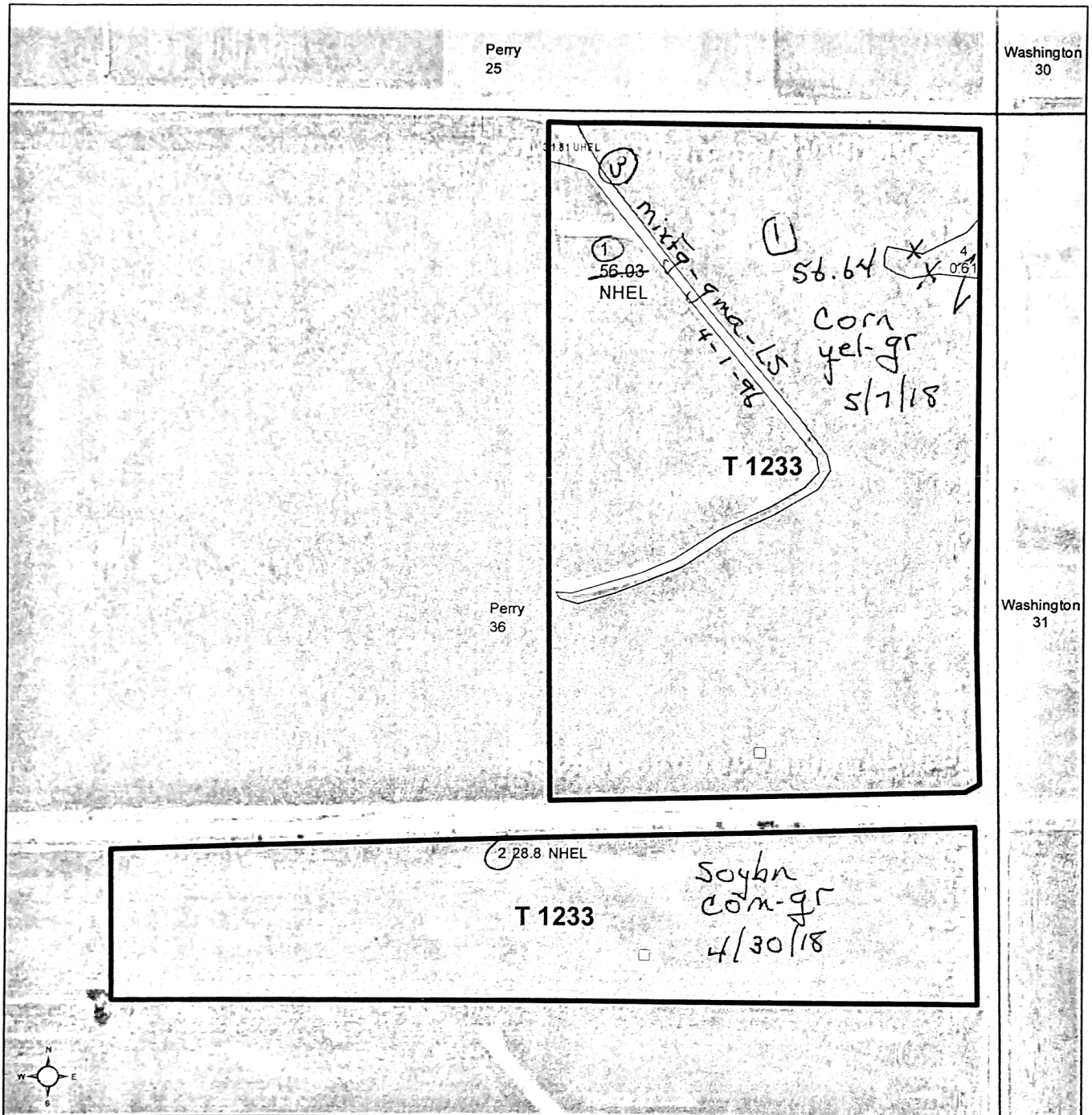
Tract Cropland Total: 208.96 acres

United States Department of Agriculture (USDA) Farm Service Agency (FSA) maps are for FSA Program administration only. This map does not represent a legal survey or reflect actual ownership; rather it depicts the information provided directly from the producer and/or National Agricultural Imagery Program (NAIP) imagery. The producer accepts the data 'as is' and assumes all risks associated with its use. USDA-FSA assumes no responsibility for actual or consequential damage incurred as a result of any user's reliance on this data outside FSA Programs. Wetland identifiers do not represent the size, shape, or specific determination of the area. Refer to your original determination (CPA-026 and attached maps) for exact boundaries and determinations or contact USDA Natural Resources Conservation Service (NRCS).



United States
Department of
Agriculture

Buchanan County, Iowa



Common Land Unit
Non-Cropland
Cropland

Tract Boundary
PLSS

Wetland Determination Identifiers

- Restricted Use
- ▽ Limited Restrictions
- Exempt from Conservation Compliance Provisions

0 170 340 680
Feet

2015 Ortho Imagery

2018 Program Year
Map Created December 07, 2017

Farm 6786
Tract 1233

Tract Cropland Total: 86.64 acres

United States Department of Agriculture (USDA) Farm Service Agency (FSA) maps are for FSA Program administration only. This map does not represent a legal survey or reflect actual ownership; rather it depicts the information provided directly from the producer and/or National Agricultural Imagery Program (NAIP) imagery. The producer accepts the data 'as is' and assumes all risks associated with its use. USDA-FSA assumes no responsibility for actual or consequential damage incurred as a result of any user's reliance on this data outside FSA Programs. Wetland identifiers do not represent the size, shape, or specific determination of the area. Refer to your original determination (CPA-026 and attached maps) for exact boundaries and determinations or contact USDA Natural Resources Conservation Service (NRCS).