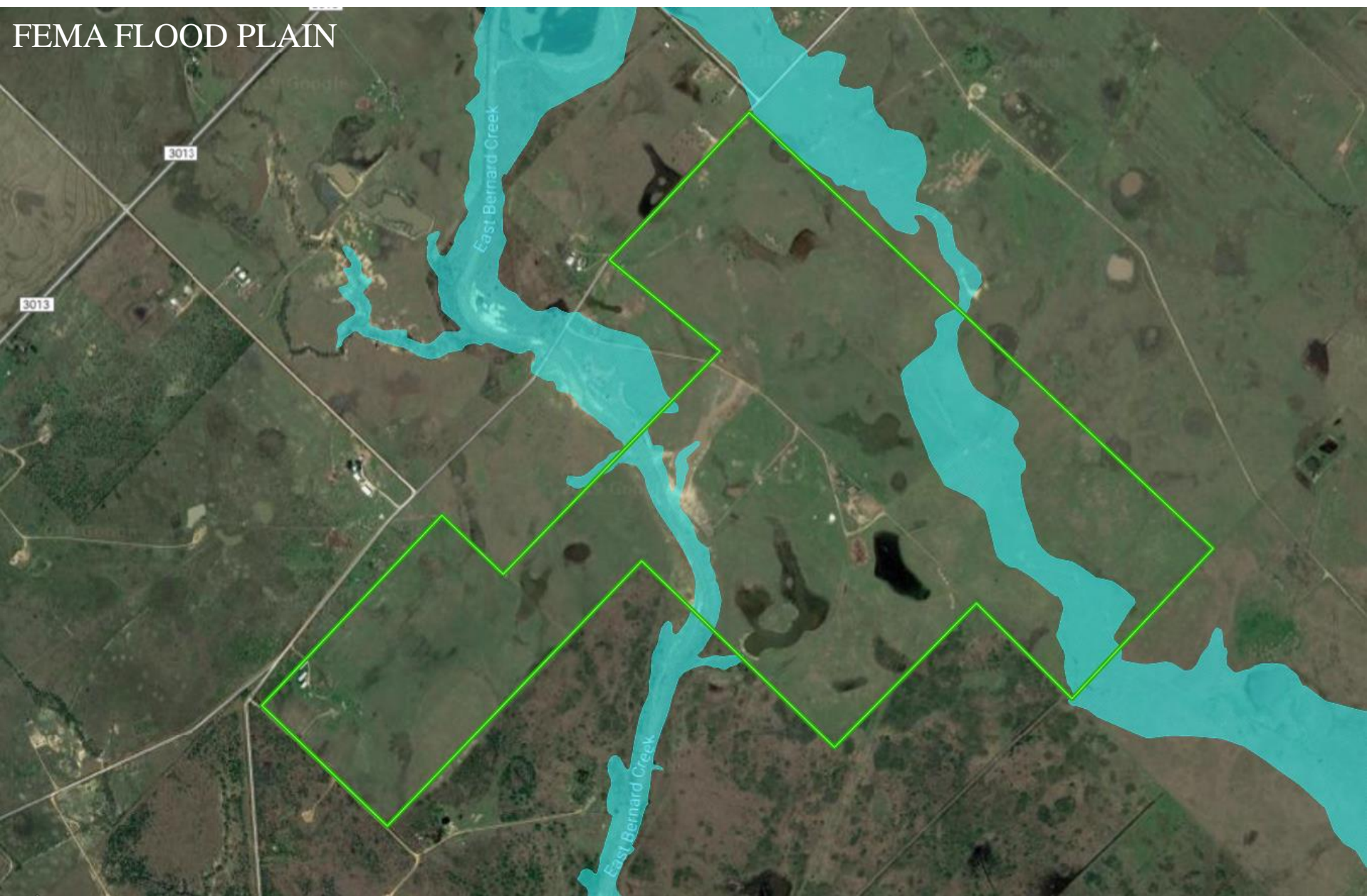


Google

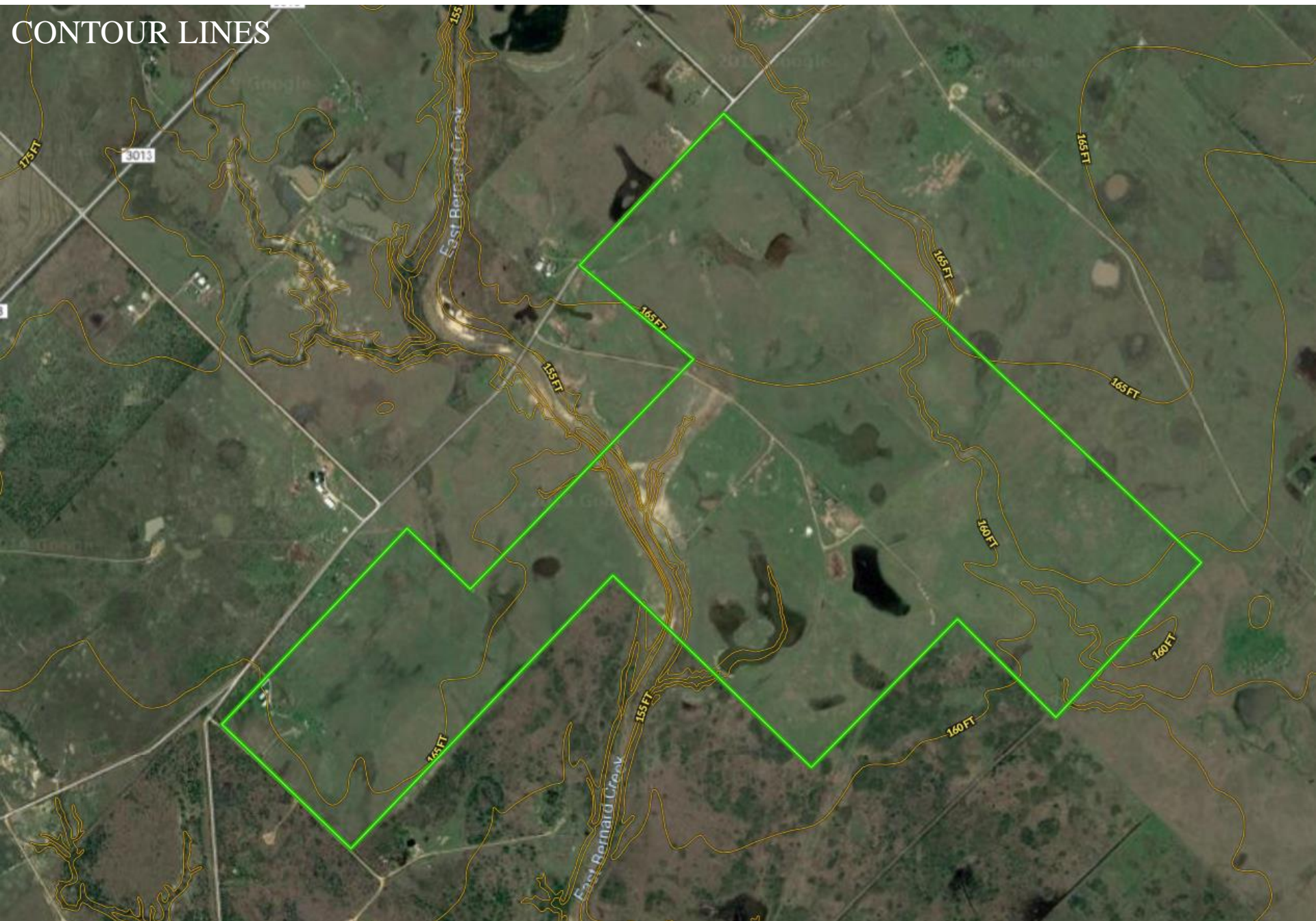
Map data ©2019 Google Imagery ©2019 , DigitalGlobe, Houston-Galveston Area Council, Texas Orthoimagery Program U.S. Geological Survey USGS Data Service Agency

- Water Trough
- Entrance Gate
- Water Well
- Electric Line
- Secondary Road
- Primary Road
- East Bernard Creek
- Hog Branch
- Cross Fence
- Pond
- Boundary






FEMA FLOOD PLAIN

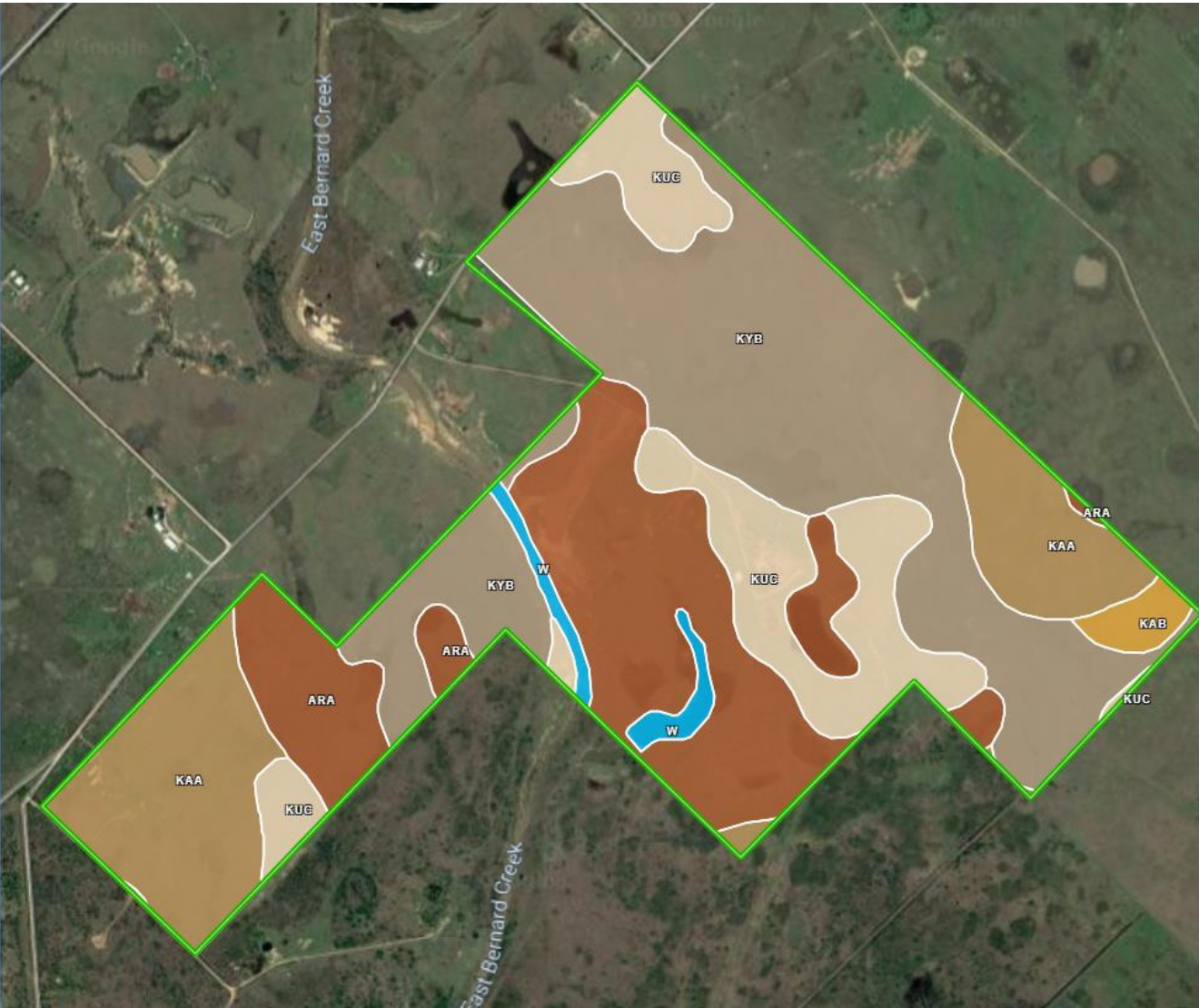


CONTOUR LINES

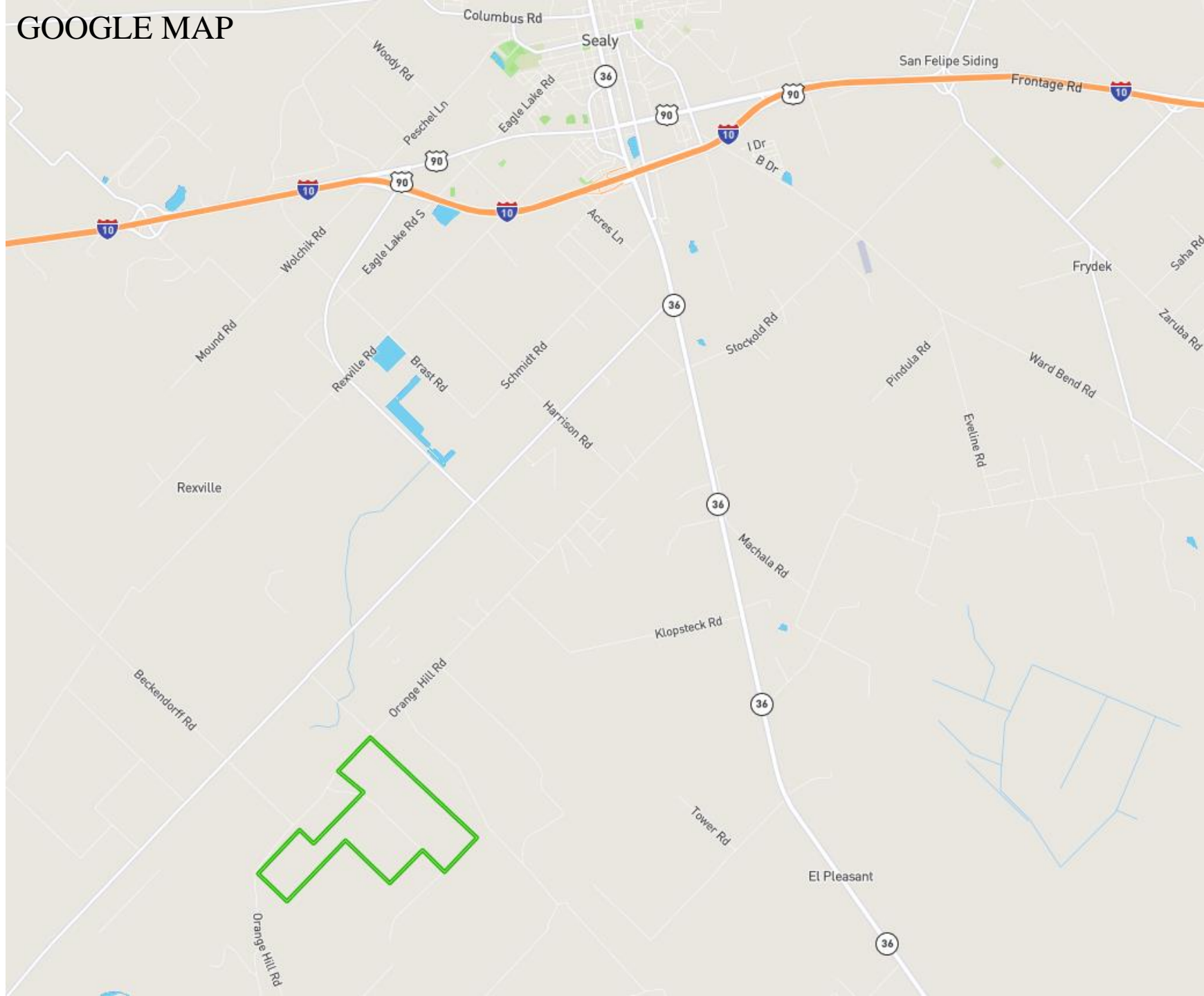


SOIL REPORT

Boundary  611.7 ac				
CODE	DESCRIPTION	ACRES	%	CAP 
 KaA	Katy fine sandy loam, 0 to 1 percent slopes	107.8	17.6%	2w 
 W	Water	10.5	1.7%	- 
 KuC	Kuy sand, 0 to 5 percent slopes	92.8	15.2%	3s 
 KaB	Katy fine sandy loam, 1 to 3 percent slopes	8.2	1.3%	2w 
 ArA	Cyfair-Katy complex, 0 to 1 percent slopes	156.9	25.7%	3s 
 KyB	Kuy-Rexville complex, 0 to 1 percent slopes	235.5	38.5%	4e 
Totals		611.7 Ac	3.2 Cap. Average	



GOOGLE MAP



COUNTY MAP

