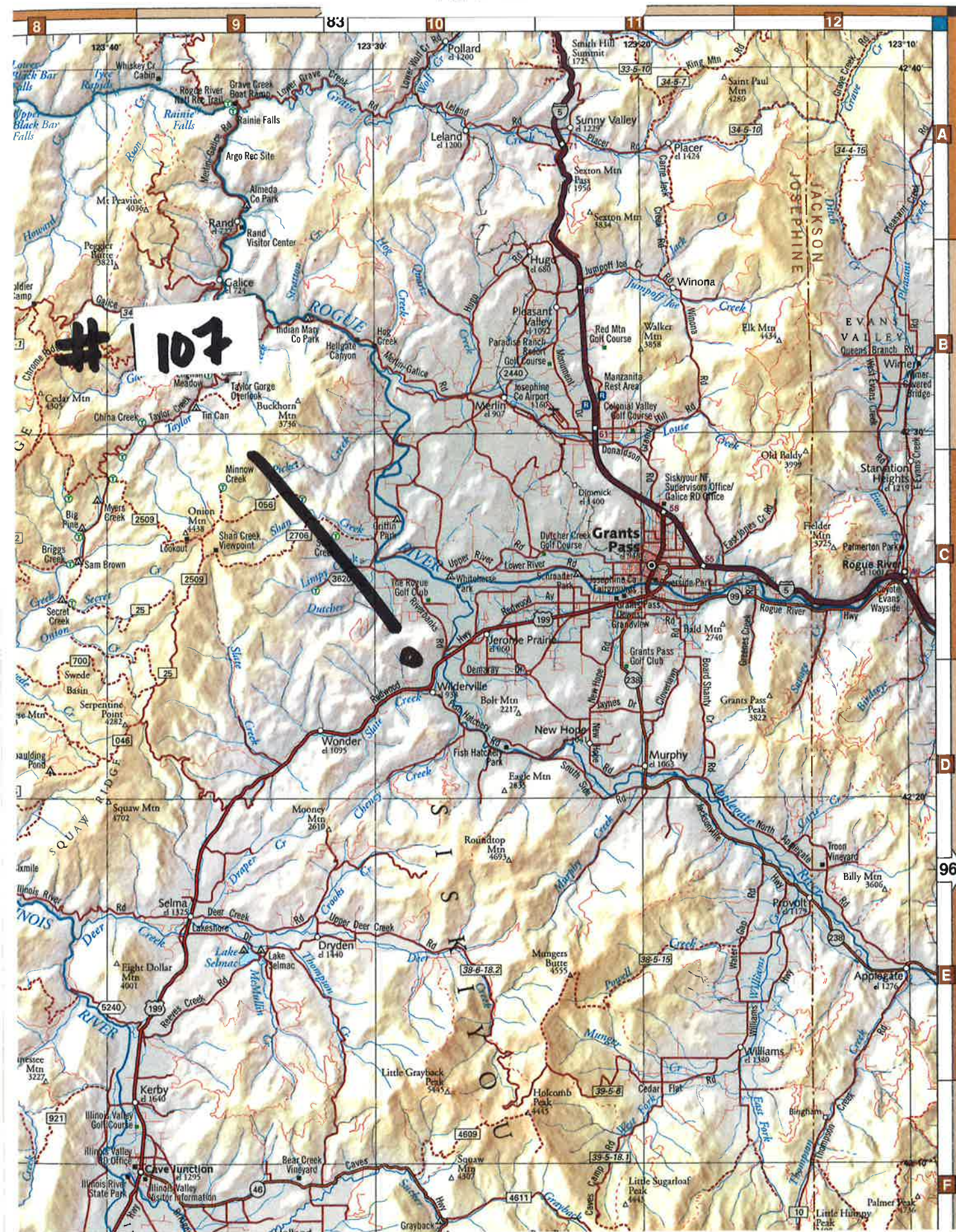


LOCATION MAP

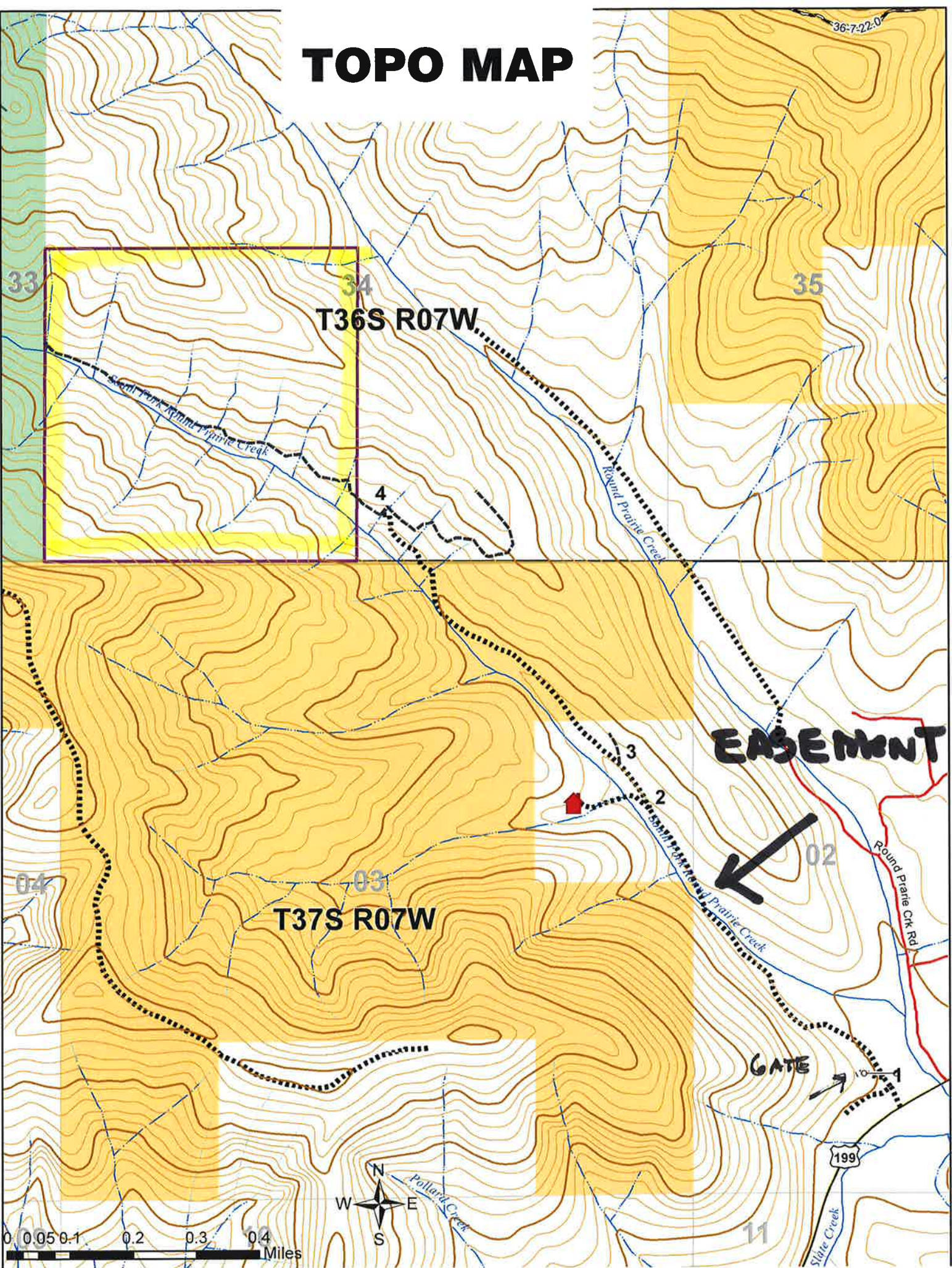
95

feet 0 2000 4000
meters 0 500 1000 1



LANDSCAPE

TOPO MAP



PLAT MAP

SEE MAP 36 7

5

300
160.00 Ac.



N 00° 02' 30" E

400
1.30 Ac.

500
58.12 Ac.

30' Easement

CS 60-87

600
20.00 Ac.

33

34

2.14 Ac.

40.32 Ac.

N 02° 56' E

4

3



Round Prairie Road
Wilderville, OR 97543

THIS MAP IS FURNISHED AS AN
ACCOMMODATION STRICTLY FOR THE
PURPOSES OF GENERALLY LOCATING
THE LAND. IT DOES NOT REPRESENT A
SURVEY OF THE LAND OR IMPLY ANY
REPRESENTATIONS AS TO THE SIZE,
AREA OR ANY OTHER FACTS RELATED TO
THE LAND SHOWN THEREOF

AERIAL PHOTO

1894 130



Boundary outlines are for illustration only. Buyers are advised to conduct their own investigation to determine the exact location.

D981_GrantsPass-003

Site Photos



Access road from Highway 199



Take 1st fork (uphill to right)



Proceed at final fork to left



South Fork Round Prairie Creek



View from the property



**Seller replanted 100± acres in Spring 2017
(see MBG report)**

Site Photos



An estimated 60± acres of timber located south of the creek