

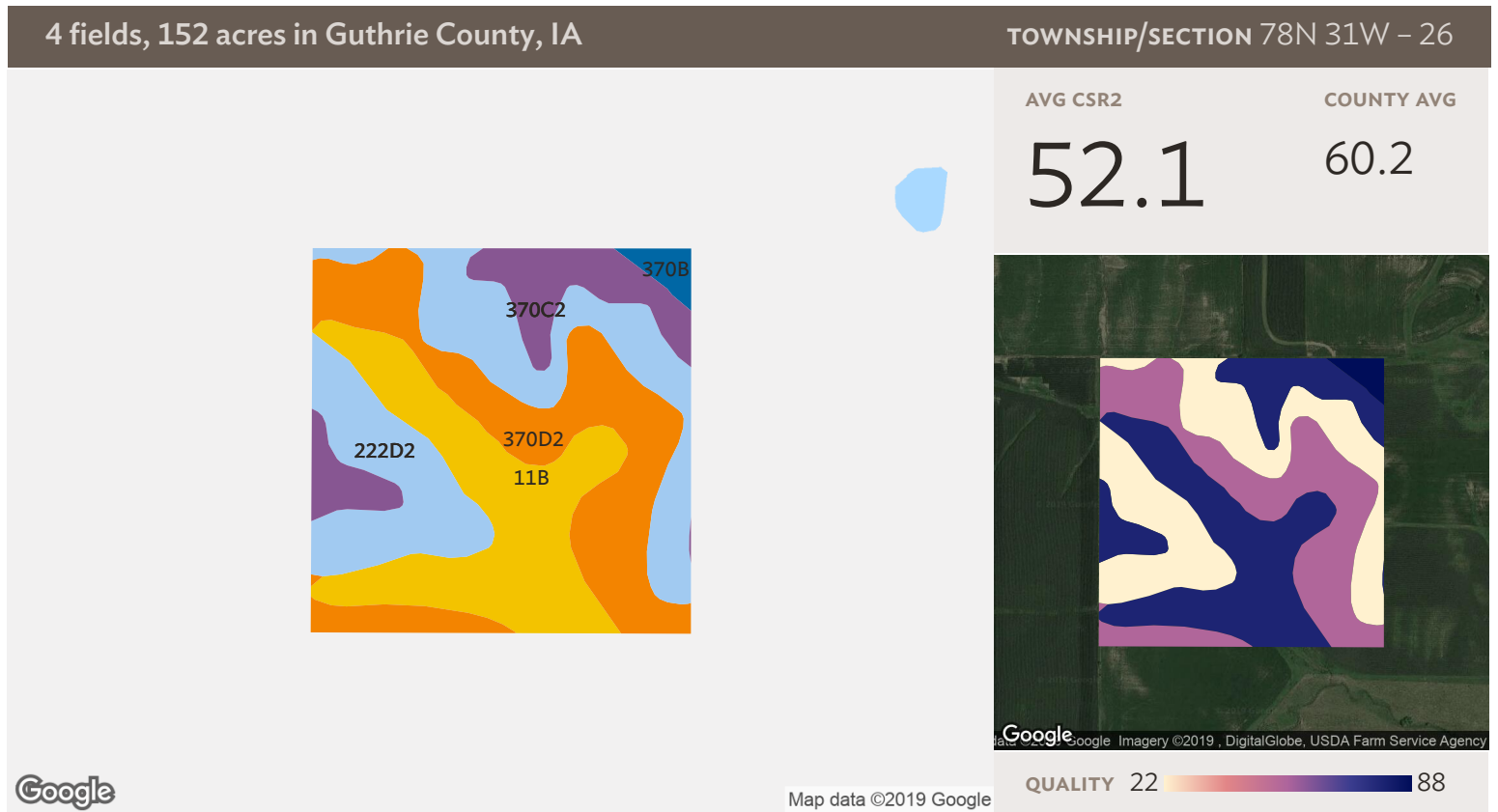
Source: NRCS Soil Survey

## All fields

152 ac

SOIL CODE	SOIL DESCRIPTION	ACRES	PERCENTAGE OF FIELD	SOIL CLASS	CSR2
11B	Colo-Judson silty clay loams, 0 to 5 percent slopes, occasionally flooded	32.34	21.2%	2	80.0
370C2	Sharpsburg silty clay loam, 5 to 9 percent slopes, eroded	27.41	18.0%	3	80.0
370D2	Sharpsburg silty clay loam, 9 to 14 percent slopes, eroded	26.86	17.6%	3	54.0
222D2	Clarinda silty clay loam, 9 to 14 percent slopes, moderately eroded	22.46	14.8%	4	17.0
Y93D2	Shelby-Adair clay loams, dissected till plain, 9 to 14 percent slopes, eroded	19.74	13.0%	3	41.0
Y24D2	Shelby clay loam, dissected till plain, 9 to 14 percent slopes, eroded	8.68	5.7%	3	49.0
Y24E2	Shelby clay loam, dissected till plain, 14 to 18 percent slopes, eroded	5.04	3.3%	4	35.0
8B	Judson silty clay loam, dissected till plain, 2 to 5 percent slopes	3.37	2.2%	2	93.0






4 fields, 152 acres in Guthrie County, IA			TOWNSHIP/SECTION 78N 31W – 26			
■	Y93E3	Shelby-Adair clay loams, dissected till plain, 14 to 18 percent slopes, severely eroded	2.81	1.8%	6	24.0
■	370B	Sharpsburg silty clay loam, 2 to 5 percent slopes	2.65	1.7%	2	90.0
■	Y93E2	Shelby-Adair clay loams, dissected till plain, 14 to 18 percent slopes, eroded	0.91	0.6%	4	30.0
			152.25			56.9



Source: NRCS Soil Survey

## Field 1

39 ac

SOIL CODE	SOIL DESCRIPTION	ACRES	PERCENTAGE OF FIELD	SOIL CLASS	CSR2
 222D2	Clarinda silty clay loam, 9 to 14 percent slopes, moderately eroded	12.88	32.9%	4	17.0
 370D2	Sharpsburg silty clay loam, 9 to 14 percent slopes, eroded	10.99	28.1%	3	54.0
 11B	Colo-Judson silty clay loams, 0 to 5 percent slopes, occasionally flooded	9.98	25.5%	2	80.0
 370C2	Sharpsburg silty clay loam, 5 to 9 percent slopes, eroded	4.64	11.9%	3	80.0
 370B	Sharpsburg silty clay loam, 2 to 5 percent slopes	0.61	1.6%	2	90.0
<b>39.09</b>					<b>52.1</b>

4 fields, 152 acres in Guthrie County, IA

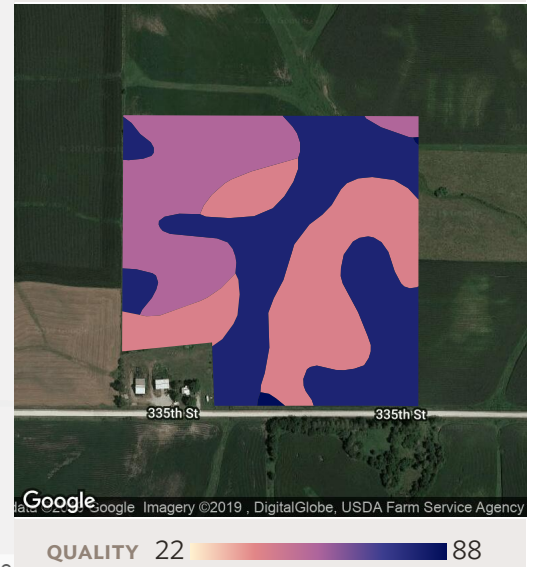
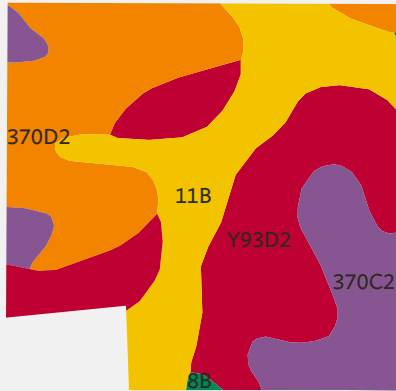
TOWNSHIP/SECTION 78N 31W – 26

AVG CSR2

COUNTY AVG

60.5

60.2



Google

Map data ©2019 Google

## Field 2

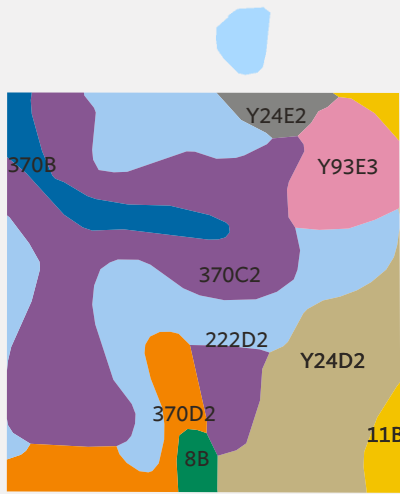
Source: NRCS Soil Survey

36 ac

SOIL CODE	SOIL DESCRIPTION	ACRES	PERCENTAGE OF FIELD	SOIL CLASS	CSR2
■ Y93D2	Shelby-Adair clay loams, dissected till plain, 9 to 14 percent slopes, eroded	11.56	32.4%	3	41.0
■ 370D2	Sharpsburg silty clay loam, 9 to 14 percent slopes, eroded	9.48	26.5%	3	54.0
■ 11B	Colo-Judson silty clay loams, 0 to 5 percent slopes, occasionally flooded	9.12	25.5%	2	80.0
■ 370C2	Sharpsburg silty clay loam, 5 to 9 percent slopes, eroded	5.52	15.5%	3	80.0
■ 8B	Judson silty clay loam, dissected till plain, 2 to 5 percent slopes	0.05	0.1%	2	93.0
		<b>35.73</b>			<b>60.5</b>

4 fields, 152 acres in Guthrie County, IA

TOWNSHIP/SECTION 78N 31W – 26

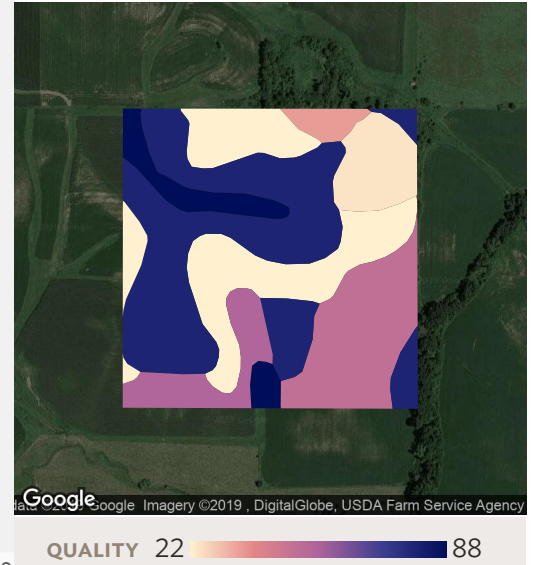


AVG CSR2

53.6

COUNTY AVG

60.2



Google

Map data ©2019 Google

## Field 3

Source: NRCS Soil Survey

39 ac

SOIL CODE	SOIL DESCRIPTION	ACRES	PERCENTAGE OF FIELD	SOIL CLASS	CSR2
370C2	Sharpsburg silty clay loam, 5 to 9 percent slopes, eroded	13.70	35.0%	3	80.0
222D2	Clarinda silty clay loam, 9 to 14 percent slopes, moderately eroded	9.58	24.5%	4	17.0
Y24D2	Shelby clay loam, dissected till plain, 9 to 14 percent slopes, eroded	6.11	15.6%	3	49.0
Y93E3	Shelby-Adair clay loams, dissected till plain, 14 to 18 percent slopes, severely eroded	2.81	7.2%	6	24.0
370D2	Sharpsburg silty clay loam, 9 to 14 percent slopes, eroded	2.47	6.3%	3	54.0
370B	Sharpsburg silty clay loam, 2 to 5 percent slopes	2.04	5.2%	2	90.0
Y24E2	Shelby clay loam, dissected till plain, 14 to 18 percent slopes, eroded	1.01	2.6%	4	35.0
11B	Colo-Judson silty clay loams, 0 to 5 percent slopes, occasionally flooded	0.93	2.4%	2	80.0

4 fields, 152 acres in Guthrie County, IA			TOWNSHIP/SECTION 78N 31W – 26			
■ 8B	Judson silty clay loam, dissected till plain, 2 to 5 percent slopes	0.53	1.3%	2	93.0	
		39.19			53.6	

4 fields, 152 acres in Guthrie County, IA

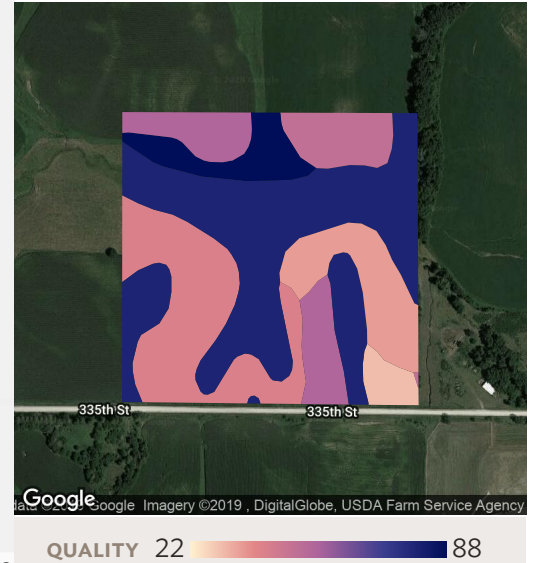
TOWNSHIP/SECTION 78N 31W – 26

AVG CSR2

COUNTY AVG

61.9

60.2



Google

Map data ©2019 Google

QUALITY 22 88

## Field 4

Source: NRCS Soil Survey

38 ac

SOIL CODE	SOIL DESCRIPTION	ACRES	PERCENTAGE OF FIELD	SOIL CLASS	CSR2
11B	Colo-Judson silty clay loams, 0 to 5 percent slopes, occasionally flooded	12.32	32.2%	2	80.0
Y93D2	Shelby-Adair clay loams, dissected till plain, 9 to 14 percent slopes, eroded	8.17	21.4%	3	41.0
Y24E2	Shelby clay loam, dissected till plain, 14 to 18 percent slopes, eroded	4.02	10.5%	4	35.0
370D2	Sharpsburg silty clay loam, 9 to 14 percent slopes, eroded	3.92	10.2%	3	54.0
370C2	Sharpsburg silty clay loam, 5 to 9 percent slopes, eroded	3.55	9.3%	3	80.0
8B	Judson silty clay loam, dissected till plain, 2 to 5 percent slopes	2.78	7.3%	2	93.0
Y24D2	Shelby clay loam, dissected till plain, 9 to 14 percent slopes, eroded	2.57	6.7%	3	49.0

4 fields, 152 acres in Guthrie County, IA			TOWNSHIP/SECTION 78N 31W – 26			
■	Y93E2	Shelby-Adair clay loams, dissected till plain, 14 to 18 percent slopes, eroded	0.91	2.4%	4	30.0
			38.24			61.9



**4 fields, 152 acres in Guthrie County, IA**
**TOWNSHIP/SECTION 78N 31W – 26**

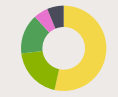

## All fields

152 ac


**2017**

**2016**

**2015**

**2014**

**2013**
 Corn

49.4%

64.2%

45.4%

30.2%

53.5%

 Soybeans

35.5%

19.9%

31.2%

46.3%

19.6%

 Grass/Pasture

14.9%

15.2%

15.6%

14.2%

15.2%

 Alfalfa


–

0.7%

7.5%

9.1%

5.5%

 Crop Undetermined

0.3%

–

0.2%

–

6.3%

 Other

–

–

–

0.3%

–



## Field 1

39 ac


**2017**

**2016**

**2015**

**2014**

**2013**
 Corn

86.3%

74.8%

74.1%

16.4%

84.6%

 Soybeans

13.2%

24.8%

21.5%

82.8%

15.2%

 Other

0.4%

0.4%

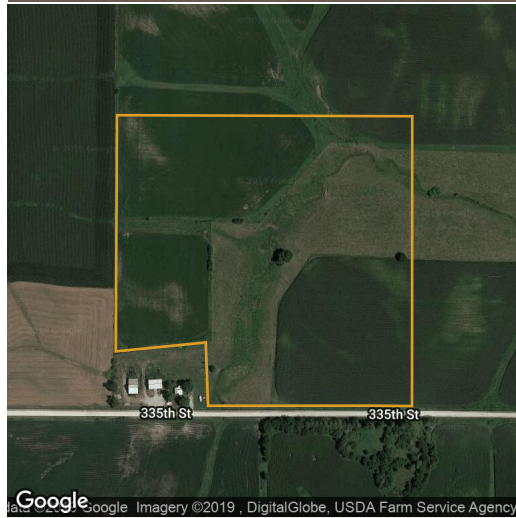
4.3%

0.9%

0.2%

4 fields, 152 acres in Guthrie County, IA

TOWNSHIP/SECTION 78N 31W – 26



## Field 2

36 ac



2017



2016



2015



2014



2013

Corn 46.2%

Grass/Pasture 28.5%

Soybeans 25.3%

Alfalfa –

Crop Undetermined –

Other –

46.2%

28.5%

25.3%

–

–

–

50.5%

28.5%

19.7%

1.3%

–

–

44.1%

28.5%

24.1%

3.2%

–

–

24.0%

26.3%

40.8%

8.4%

–

0.5%

53.7%

27.5%

3.7%

0.7%

14.5%

–



## Field 3

39 ac



2017



2016



2015



2014



2013

Corn 48.6%

Soybeans 51.4%

Other –

48.6%

51.4%

–

73.7%

26.3%

–

46.0%

54.0%

–

57.2%

42.8%

–

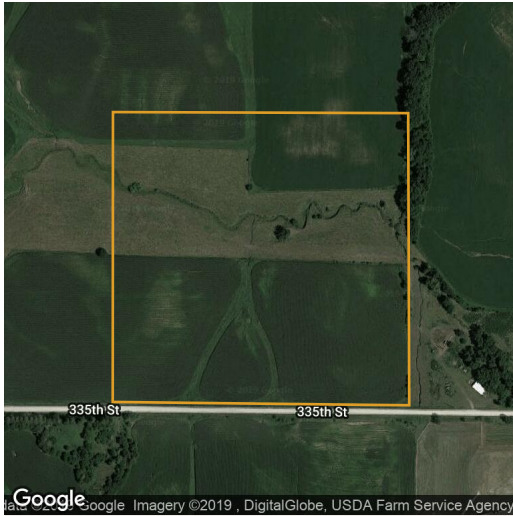
47.1%

52.0%

0.9%

4 fields, 152 acres in Guthrie County, IA

TOWNSHIP/SECTION 78N 31W – 26



## Field 4

38 ac



2017



2016



2015



2014



2013

■ Grass/Pasture	32.6%	33.7%	35.7%	32.1%	34.1%
■ Soybeans	51.4%	8.7%	24.5%	17.6%	5.8%
■ Corn	15.4%	56.4%	16.5%	22.4%	27.9%
■ Alfalfa	–	1.1%	23.4%	27.3%	20.7%
■ Crop Undetermined	0.6%	–	–	–	11.5%
■ Other	–	–	–	0.6%	–

Source: NASS Cropland Data Layer