

# COLETO LAKE PROPERTY

9 +/- ACRES/COVE FRONTAGE

VICTORIA COUNTY  
PROPERTY DESCRIPTION



## Exceptional Waterfront Property

9 +/- Acre Property with approx. 510 ft. of Coletto Cove Water Frontage

Located off Weber Road, just 12 minutes east of Downtown Victoria, Texas.

This property has approx. 510 ft. of cove frontage, giving you direct access to the Coletto Creek Reservoir and endless recreational activities. Property terrain is mostly wooded with huge, mature oaks throughout. Loaded with wildlife including whitetail deer, turkey, hogs and the occasional alligator, this property makes a perfect homesite for the nature enthusiast.

Build your own boathouse and spend weekends fishing Coletto Lake! Included in the list price is access to the 50 +/- Acre Community GBRA area. This stunning acreage is only available to owners and has massive oaks, extensive water frontage, great views of the lake and plenty of open areas for recreational activities.

**LIST PRICE \$195,000**



**BILLY MURPHY**  
FARM & RANCH REAL ESTATE  
(361) 655-0484

**COLDWELL  
BANKER**  
THE RON BROWN  
COMPANY

M4RANCHREALESTATE.COM  
BILLY.MURPHY@COLDWELLBANKER.COM



# COLETO LAKE PROPERTY

9 +/- ACRES

VICTORIA COUNTY  
PROPERTY AERIAL





# COLETO LAKE PROPERTY

21 +/- ACRES

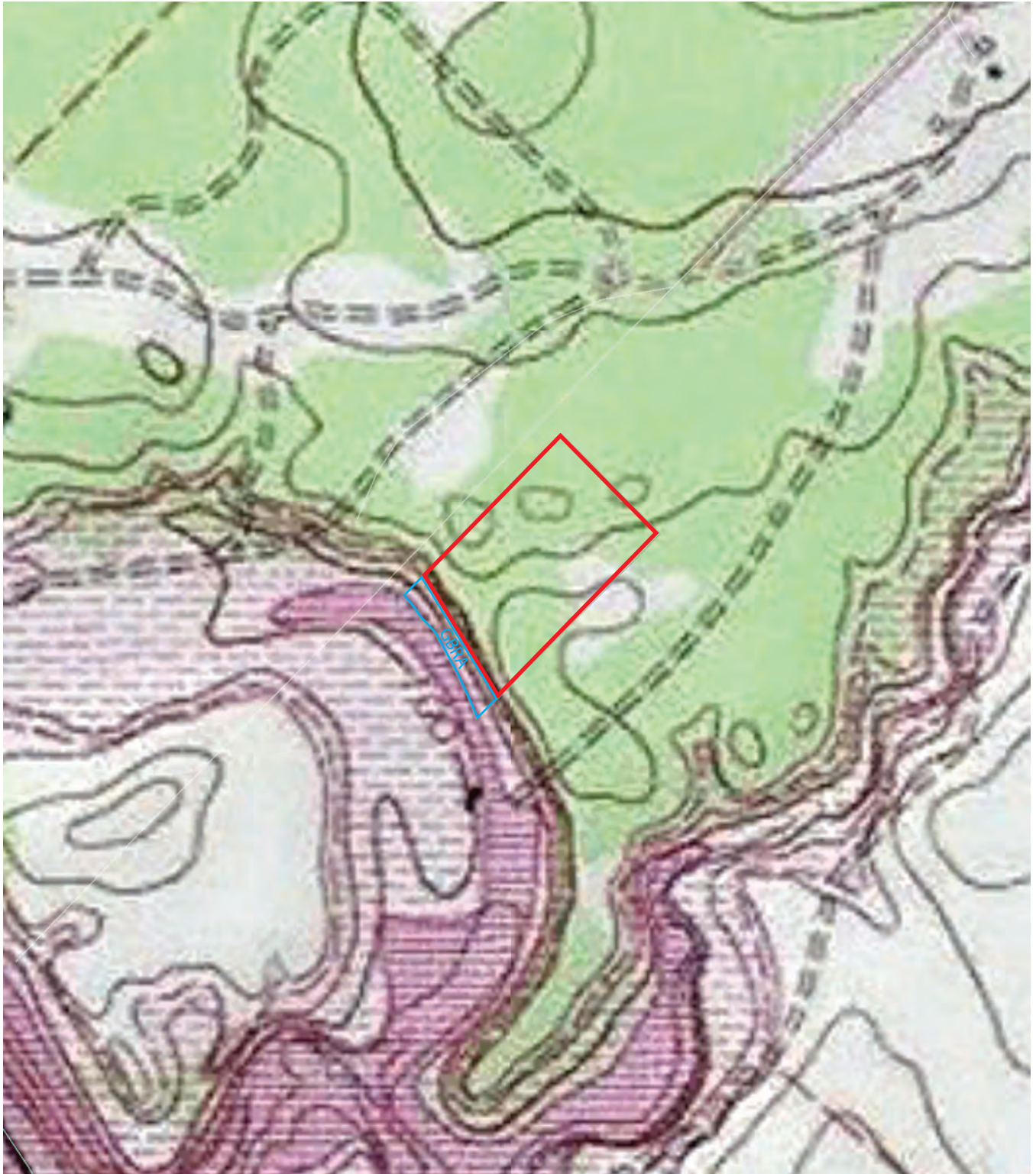
VICTORIA COUNTY





# COLETO LAKE PROPERTY

9 +/- ACRES





# COLETO PROPERTY

AVAILABLE LOTS

VICTORIA COUNTY

