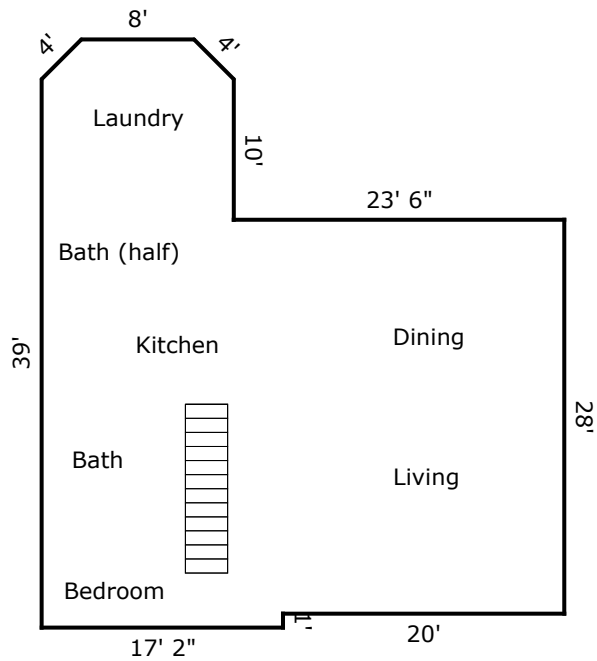
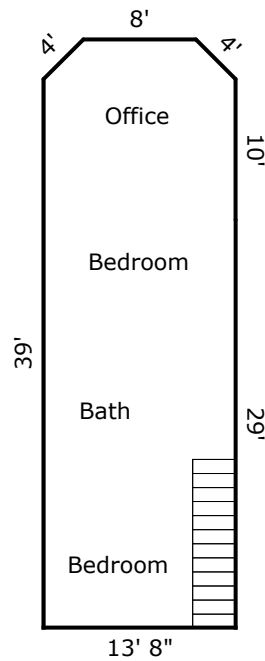


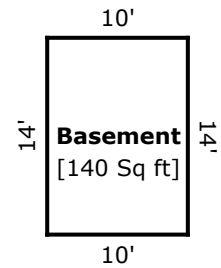
First Floor



Second Floor



40'x50' Barn
10'x40' Equipment Shed



TOTAL Sketch by a la mode, inc.

Area Calculations Summary

Living Area

		Calculation Details
First Floor	1224.74 Sq ft	$28 \times 20 = 560$ $17.16 \times 29 = 497.55$ $13.66 \times 10 = 136.57$ $8 \times 2.83 = 22.63$ $0.5 \times 2.83 \times 2.83 = 4$ $0.5 \times 2.83 \times 2.83 = 4$
Second Floor	563.24 Sq ft	$13.66 \times 39 = 532.62$ $8 \times 2.83 = 22.63$ $0.5 \times 2.83 \times 2.83 = 4$ $0.5 \times 2.83 \times 2.83 = 4$

Total Living Area (Rounded):

1788 Sq ft

Non-living Area

Basement	140 Sq ft	$10 \times 14 = 140$
----------	-----------	----------------------

TOTAL Sketch software by a la mode, inc. 1-800-alamode