



**T R O P H Y**  
PROPERTIES AND AUCTION  
LAND | RECREATIONAL | RESIDENTIAL

# 87 +/- Acres for Sale - Fayette County Illinois

www.TrophyPA.com • (855) 573-5263 • leads@trophyhpa.com



**PROPERTY ADDRESS:**

1420 County Rd 1825  
Farina, IL 62418

**PRICE:** \$278,400

**ACRES:** 87

**COUNTY:** Fayette

**PROPERTY HIGHLIGHTS:**

- Mature timber
- 2-3 acre field
- Multiple cedar thickets
- Nice creek
- Secluded location
- 1 hour and 15 min from St. Louis
- 15 min from Effingham IL

**PROPERTY DESCRIPTION:**

This 87 +/- acres for sale in Fayette County Illinois is a very diverse property. It has rolling oak ridges, multiple cedar thickets for bedding areas, 2-3 acre field for food plots, and a nice creek that meanders through the middle of the property. I found 3-4 sheds while walking the farm and really big dead buck. There were deep deer trails up and down the oak ridges and turkey scratchings everywhere. There are some great possible home or cabin sites up on the ridges overlooking the creek that would have some great views. The seller will also split the farm into the south 40 or the north 47 acres call for details. This farm sits about 15 min west of Effingham IL.



**PRESENTED BY:**

**SHANE YEARIAN**

**Land Specialist - IL**

M: (618) 830-2825

P: (855) 573-5263 x710

seyarian@trophyhpa.com

**Trophy Properties and Auction**

15480 Clayton Road

Suite 101

Ballwin, MO 63011

www.Trophyhpa.com

leads@trophyhpa.com

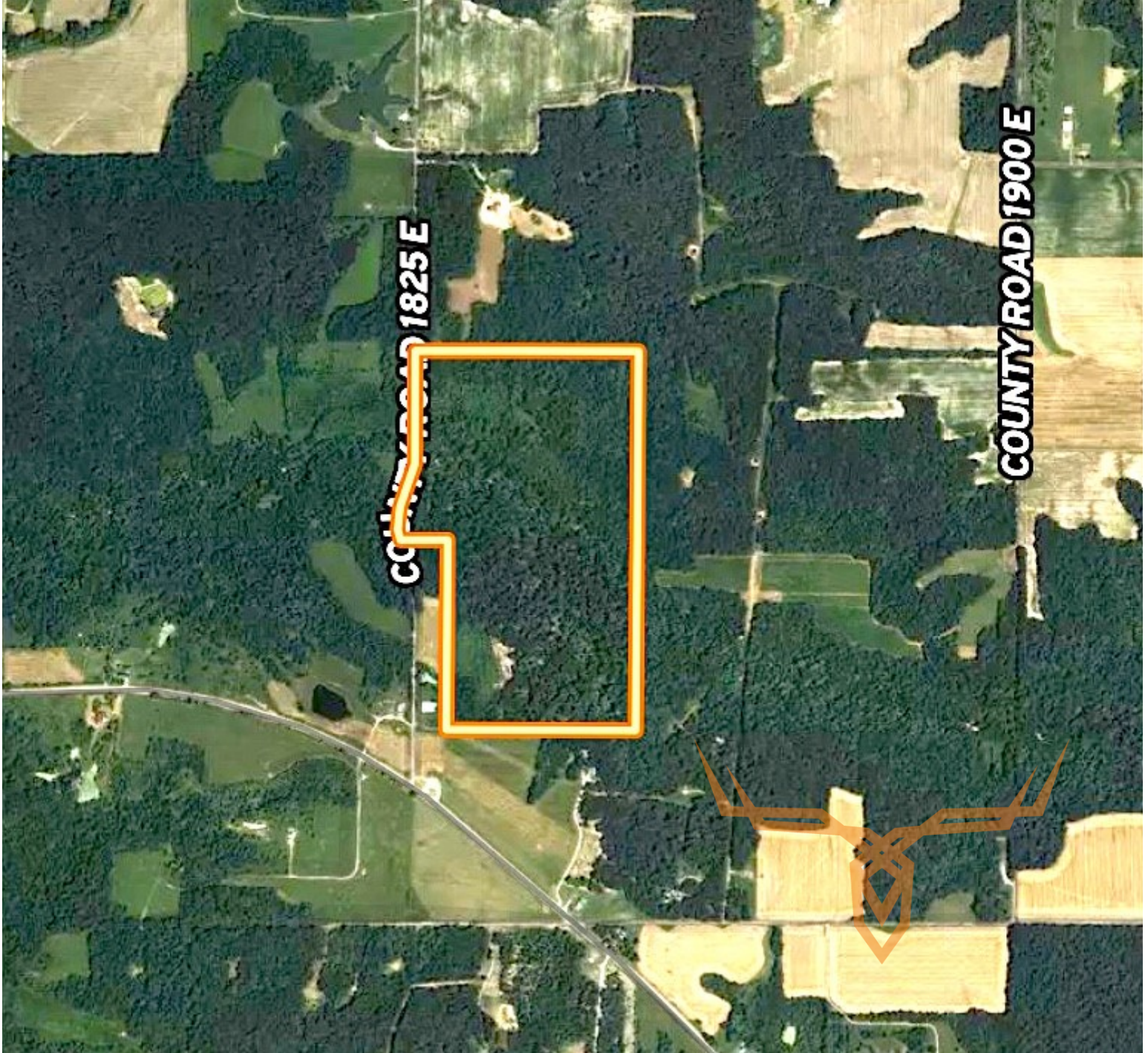




**T R O P H Y**  
PROPERTIES AND AUCTION  
LAND | RECREATIONAL | RESIDENTIAL

## 87 +/- Acres for Sale - Fayette County Illinois

[www.TrophyPA.com](http://www.TrophyPA.com) • (855) 573-5263 • [leads@trophyPA.com](mailto:leads@trophyPA.com)



Broker does not guarantee the accuracy of sq. ft., lot size, or other information, buyer is advised to independently verify the accuracy of information through personal inspection and with appropriate professionals

**TAXES: \$140**

**TAX YEAR: 2017**