

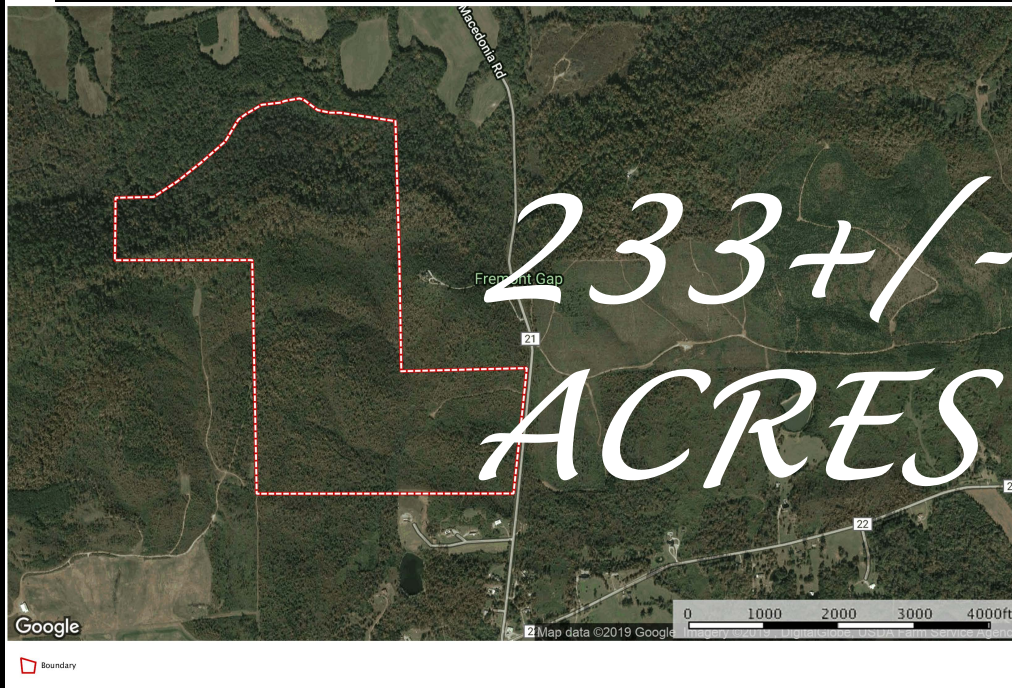


AlabamaLandAgent.com

Land • Farms • Lake Property

**Chad Camp
205-478-4974**

233 A
Alabama



Ashville, AL ~ GPS 33.818368, -86.117536

233+/- Acres Hunting or Cabin Sites. Multiple Homes Sites along Beaver Mountain. Highest Elevations over 1,000 feet which offers Scenic Lake Views of Neely Henry Lake in the distance. Boat launch for lake within 20 minutes. Front areas along County Road 21 offers opportunities for home sites and open fields. Property has wooded portions as well as storm damaged timber. Overall a great location and potential private retreat for anyone looking to enjoy land.

Directions: From Birmingham: Go I-59 to Steele Exit 174. Turn Right on Steele Station. Right on Canoe Creek Rd. Right on Hwy 411. Left on Co Rd 24 AKA Greensport Rd. Left on Co Rd 21. Property on the Right.

**Chad Camp
(205) 478-4974**

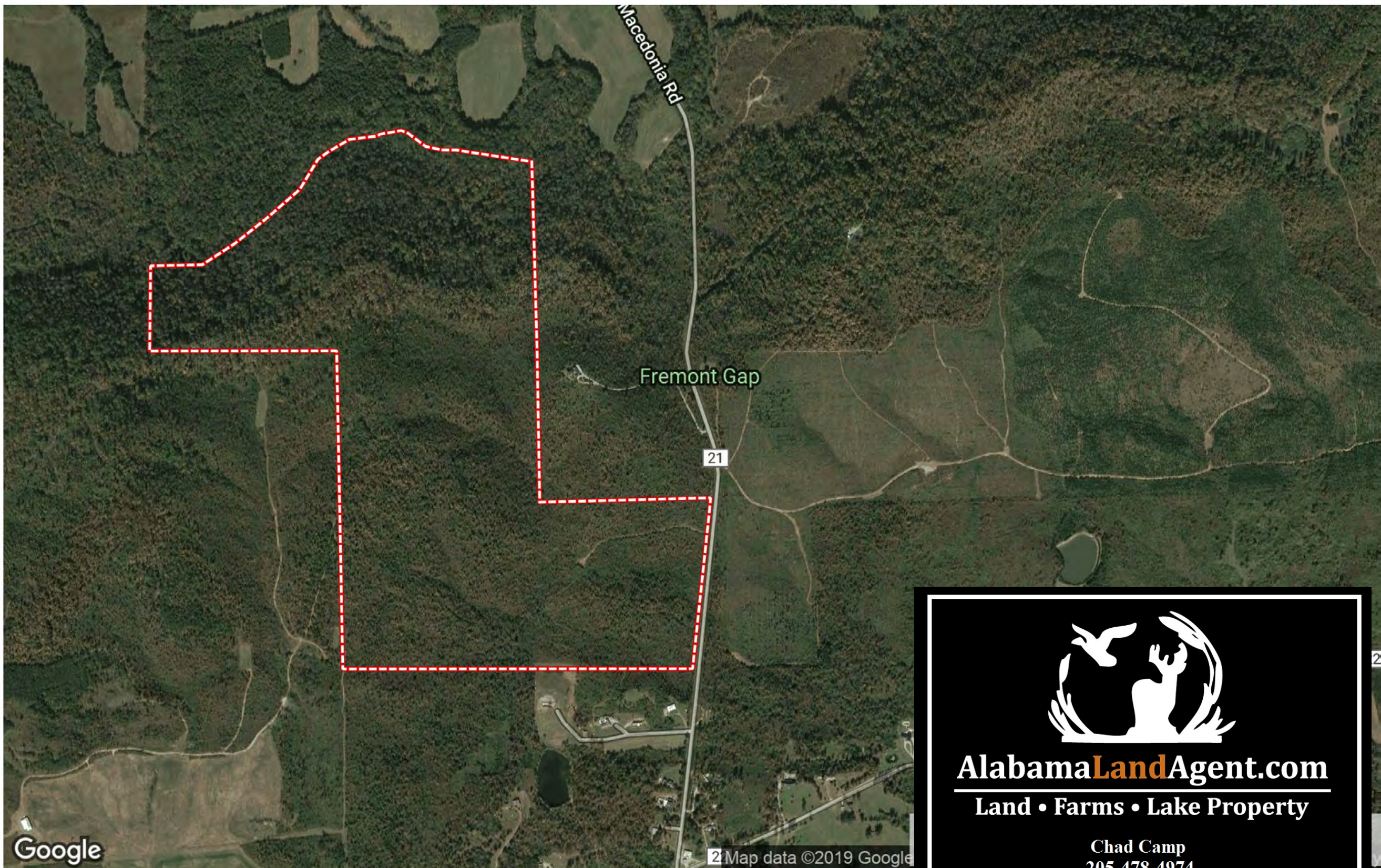



AlabamaLandAgent.com

Land • Farms • Lake Property



233 Acres Co Rd 21
Alabama, AC +/-



 Boundary

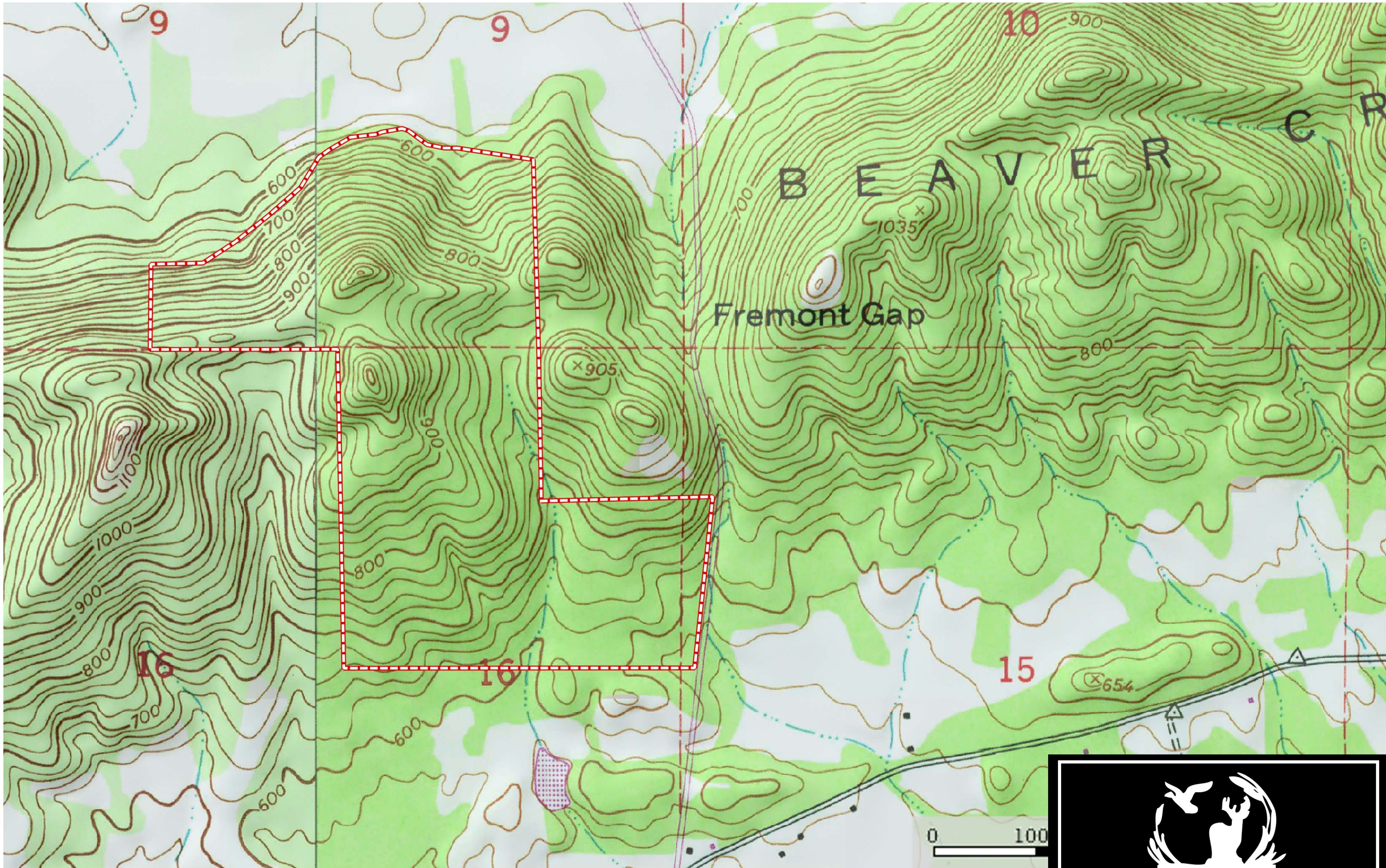


AlabamaLandAgent.com

Land • Farms • Lake Property

Chad Camp
205-478-4974

233 Acres Co Rd 21
Alabama, AC +/-



 Boundary

chad camp



AlabamaLandAgent.com

Land • Farms • Lake Property

Chad Camp
205-478-4974