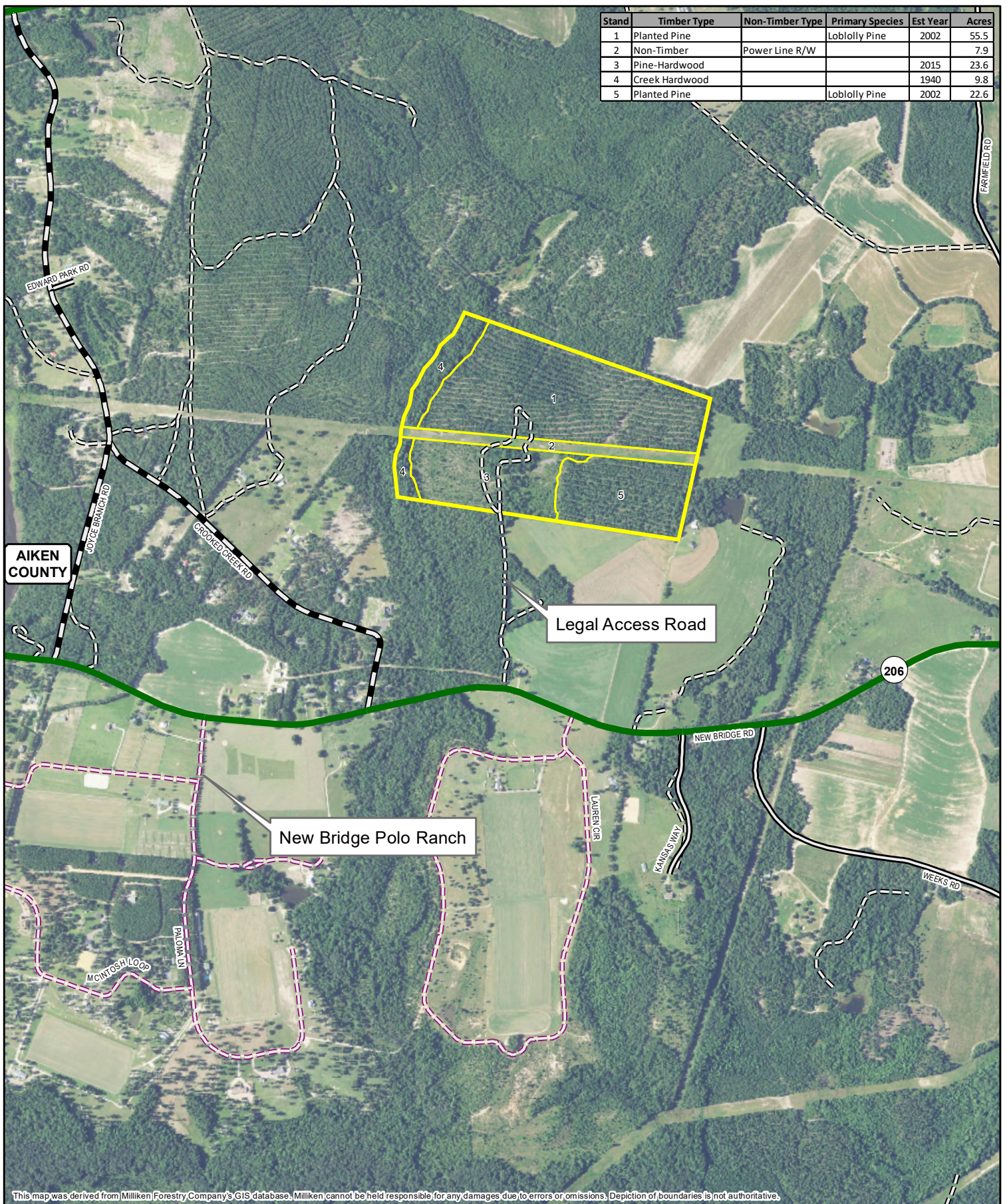


| Stand | Timber Type | Non-Timber Type | Primary Species | Est Year | Acres |
|-------|----------------|-----------------|-----------------|----------|-------|
| 1 | Planted Pine | | Loblolly Pine | 2002 | 55.5 |
| 2 | Non-Timber | Power Line R/W | | | 7.9 |
| 3 | Pine-Hardwood | | | 2015 | 23.6 |
| 4 | Creek Hardwood | | | 1940 | 9.8 |
| 5 | Planted Pine | | Loblolly Pine | 2002 | 22.6 |



This map was derived from Milliken Forestry Company's GIS database. Milliken cannot be held responsible for any damages due to errors or omissions. Depiction of boundaries is not authoritative.

