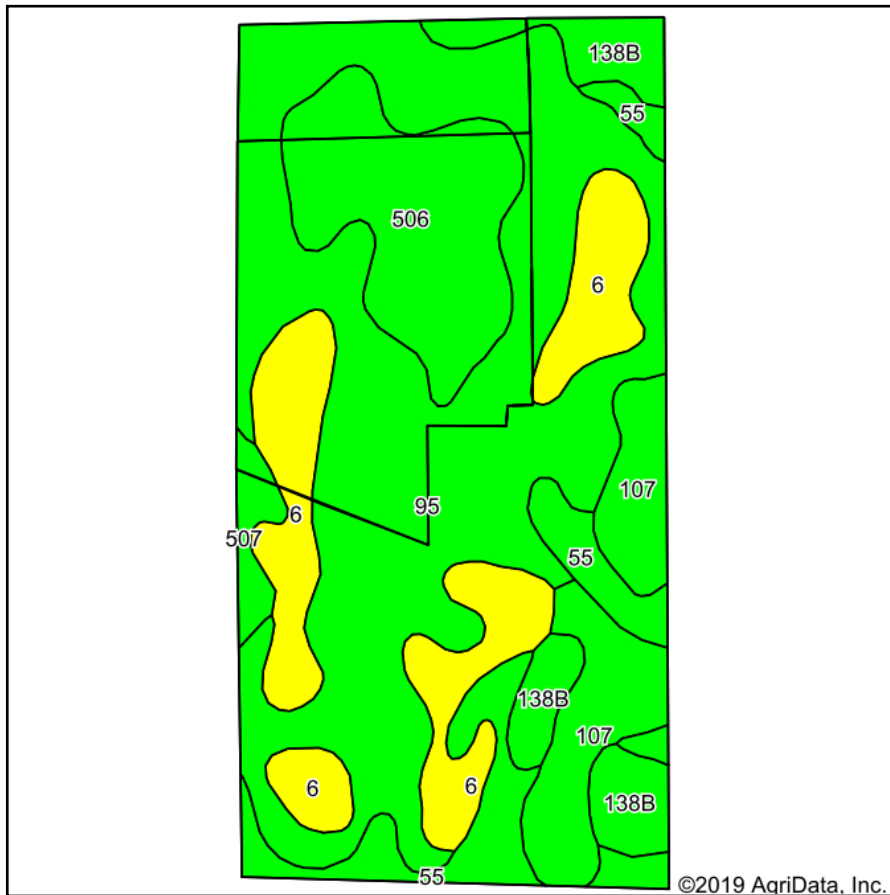
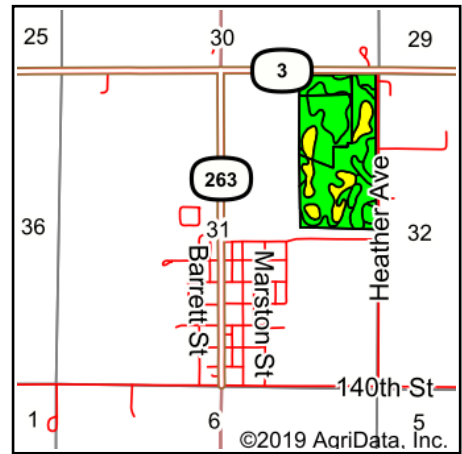


Total Soils Map



Soils data provided by USDA and NRCS.

©2019 AgriData, Inc.



State: **Iowa**
 County: **Franklin**
 Location: **31-92N-21W**
 Township: **Marion**
 Acres: **76.34**
 Date: **6/17/2019**

PEOPLES
 COMPANY
 INNOVATIVE. REAL ESTATE. SOLUTIONS.

Maps Provided By:
surety
 CUSTOMIZED ONLINE MAPPING
 © AgriData, Inc. 2019 www.AgriDataInc.com



Area Symbol: IA069, Soil Area Version: 25

Code	Soil Description	Acres	Percent of field	CSR2 Legend	Non-Irr Class *c	CSR2**	CSR	*n NCCPI Overall
95	Harps clay loam, 0 to 2 percent slopes	34.54	45.2%		IIw	72	63	77
6	Okoboji silty clay loam, 0 to 1 percent slopes	12.41	16.3%		IIIw	59	57	80
506	Wacousta silt loam, 0 to 1 percent slopes	9.61	12.6%		IIIw	74	76	93
107	Webster clay loam, 0 to 2 percent slopes	6.95	9.1%		IIw	86	84	80
55	Nicollet clay loam, 1 to 3 percent slopes	6.71	8.8%		Iw	89	89	82
138B	Clarion loam, 2 to 6 percent slopes	4.88	6.4%		Ile	89	82	83
507	Canisteo clay loam, 0 to 2 percent slopes	1.24	1.6%		IIw	84	79	79
Weighted Average						74.2	69.3	*n 80.6

**IA has updated the CSR values for each county to CSR2.

*n: The aggregation method is "Weighted Average using major components"

*c: Using Capabilities Class Dominant Condition Aggregation Method

Soils data provided by USDA and NRCS.