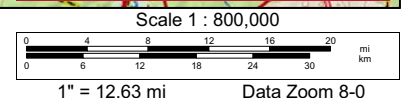
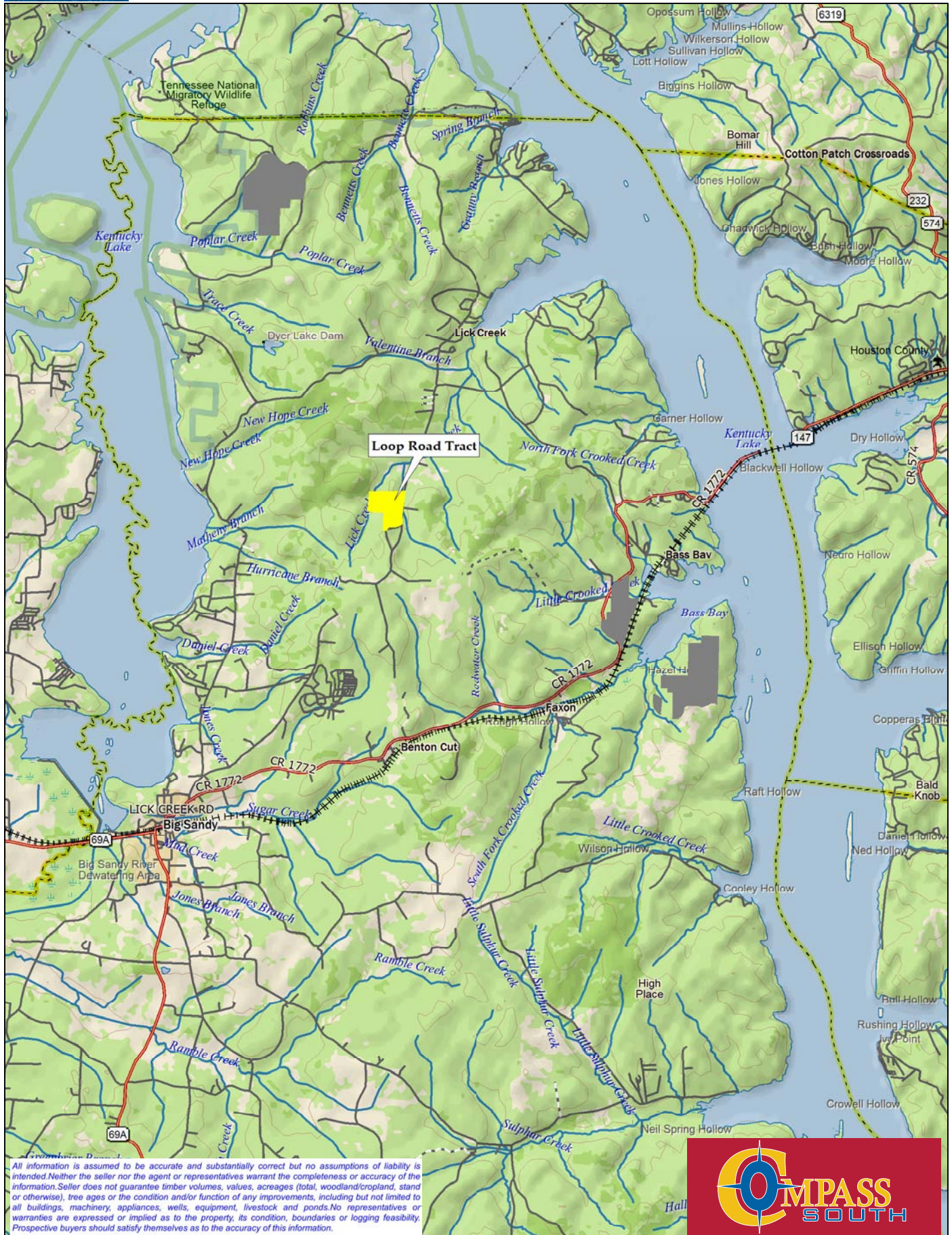


Data use subject to license.

© DeLorme. XMap® 5.2 GIS Enterprise.

www.delorme.com

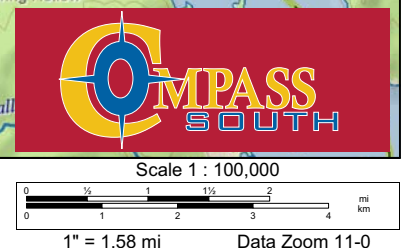




Data use subject to license.

© DeLorme. XMap® 5.2 GIS Enterprise.

www.delorme.com

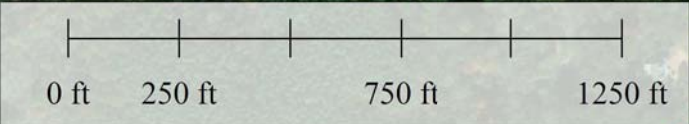


Loop Road Tract +/- 98 Acres

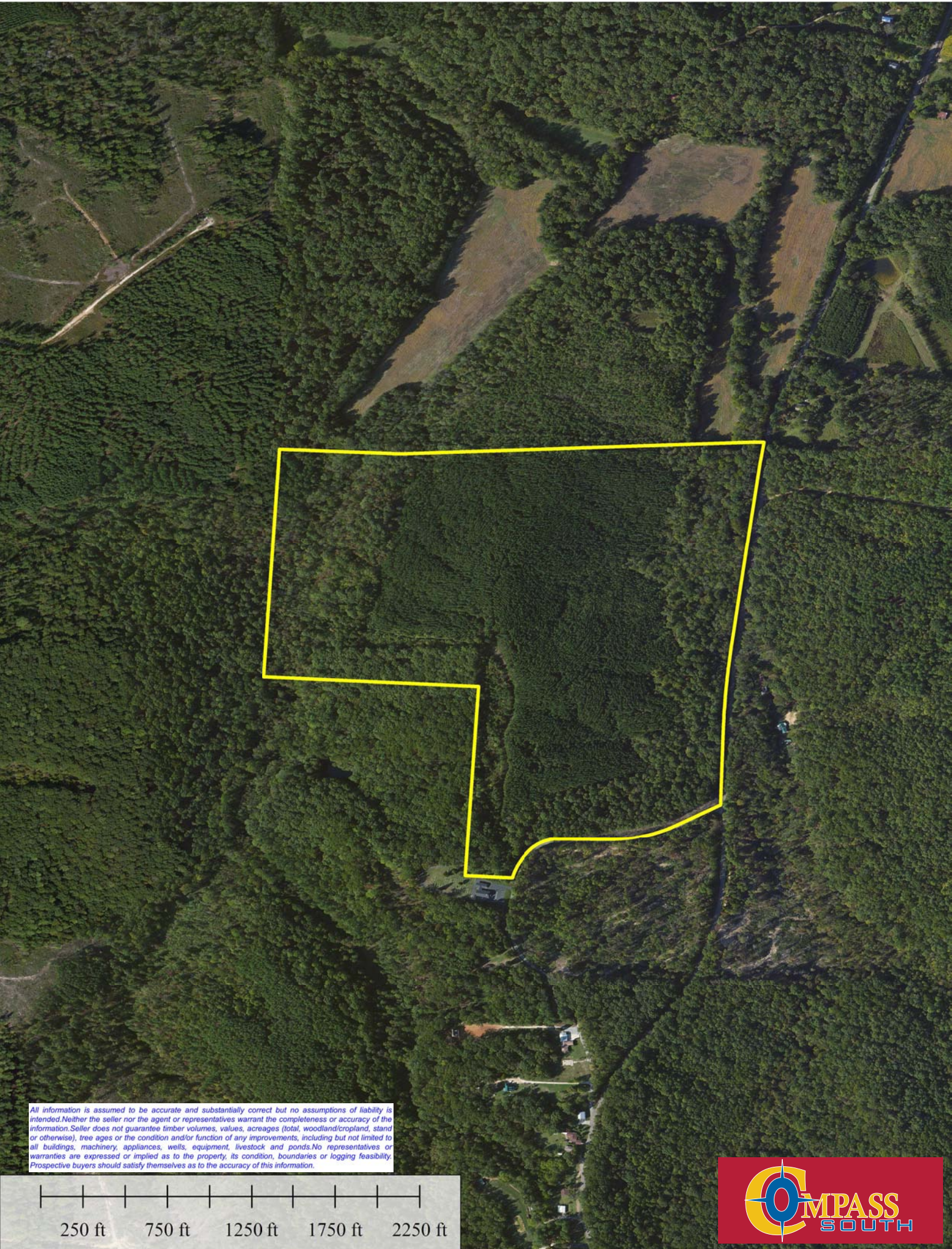


Stand #	Type	Acres
1	1950 Upland Hdwd	44
2	2000 Upland Hdwd	7
3	2001 Loblolly Pine	47
Total		98

All information is assumed to be accurate and substantially correct but no assumptions of liability is intended. Neither the seller nor the agent or representatives warrant the completeness or accuracy of the information. Seller does not guarantee timber volumes, values, acreages (total, woodland/ingland, stand or otherwise), tree ages or the condition and/or function of any improvements, including but not limited to all buildings, machinery, appliances, wells, equipment, livestock and ponds. No representatives or warranties are expressed or implied as to the property, its condition, boundaries or logging feasibility. Prospective buyers should satisfy themselves as to the accuracy of this information.



Loop Road Tract +/- 98 Acres



All information is assumed to be accurate and substantially correct but no assumptions of liability is intended. Neither the seller nor the agent or representatives warrant the completeness or accuracy of the information. Seller does not guarantee timber volumes, values, acreages (total, woodland/cropland, stand or otherwise), tree ages or the condition and/or function of any improvements, including but not limited to all buildings, machinery, appliances, wells, equipment, livestock and ponds. No representatives or warranties are expressed or implied as to the property, its condition, boundaries or logging feasibility. Prospective buyers should satisfy themselves as to the accuracy of this information.

250 ft 750 ft 1250 ft 1750 ft 2250 ft



Compass South, Inc.