



**RANCHES • HOMES
LAND • LOANS**



Commercial Office Building

Address: 2129 E Tulare Ave., Tulare, CA 92374

Description: A great investment opportunity awaits at this 2236 esf. commercial office building located along Tulare's main thoroughfare! Built in 1982, the property offers a wide variety of use options. An open reception area welcomes you and 3 additional office spaces make for great income potential at \$1800 per month. Come explore the options this property has to offer!

Price: \$249,000

APNs: 177-210-009

Contact: Donn Bree; Donn@Donn.com; 800-371-6669

COMMERCIAL OFFICE BUILDING

2129 E Tulare Ave., Tulare, CA 92374



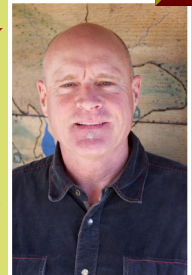
\$249,000



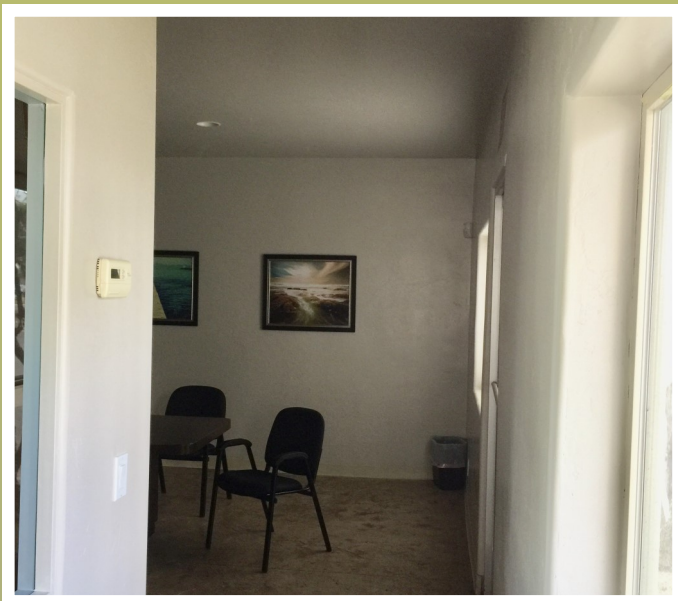
An excellent investment opportunity awaits at this 2236 esf., well maintained commercial office building located along Tulare's main thoroughfare! Built in 1982, the property offers a wide variety of options and great visibility with a high traffic count. The property is zoned C-4 (service commercial) offering numerous allowable uses. The large main office has a reception area, conference room, and secured community restroom. Three other smaller offices have separate entrances; perfect for an owner user or investor. The welcoming main office features tile flooring with a beautiful custom artistic design. Ideal for a variety of uses with an income potential of \$1800 per month. Low maintenance stucco exterior, asphalt parking lot, professionally landscaped and very well cared for. There is much to be appreciated here!



RED HAWK REALTY
Junction Hwy 78 & Hwy 79
Santa Ysabel, CA 92070
Marketing@Donn.com
www.DONN.com
DRE#01109566



APN 177-210-009



"We Know The Backcountry!"