

# COLETO LAKE COVE PROPERTY

60+/- ACRES

ACCESS TO 50+/- ACRE COMMUNITY AREA

VICTORIA COUNTY  
PROPERTY DESCRIPTION



Coletto Lake Property! Stunning acreage on Coletto Creek Reservoir, located off Weber Road, just 12 miles east of downtown Victoria, Texas. Massive oaks are spread throughout this rare property which consists of 60+/- acres with access to a 50+/- acre community area.

With approximately 450 ft. of Coletto Cove frontage, you can build your own boat house and spend weekends fishing and boating on the lake.

Property terrain is approx. 50% wooded and 50% open.

Improvements include electricity, water well and a recently excavated pond.

Loaded with wildlife, this property would make the ultimate homesite or weekend getaway.

Priced at \$895,000 this acreage is a must-see!

Call Billy for more information.



**BILLY MURPHY**  
FARM & RANCH REAL ESTATE  
(361) 655-0484

**COLDWELL  
BANKER**

THE RON BROWN  
COMPANY

M4RANCHREALESTATE.COM  
BILLY.MURPHY@COLDWELLBANKER.COM



# COLETO LAKE COVE PROPERTY

60 +/- ACRES

VICTORIA COUNTY  
PROPERTY AERIAL



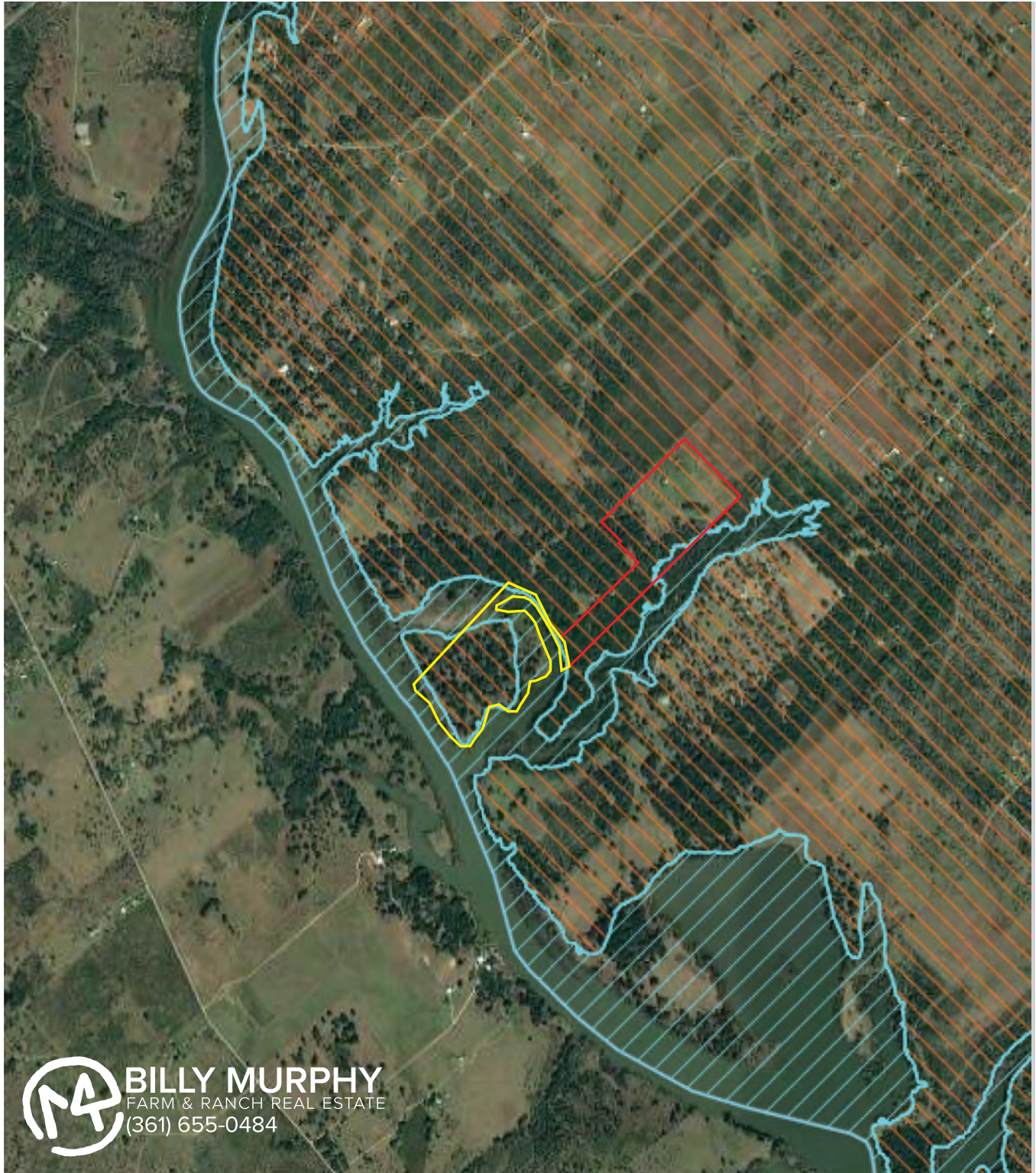
 **BILLY MURPHY**  
FARM & RANCH REAL ESTATE  
(361) 655-0484



# COLETO LAKE COVE PROPERTY

60 +/- ACRES

VICTORIA COUNTY  
PROPERTY FLOOD



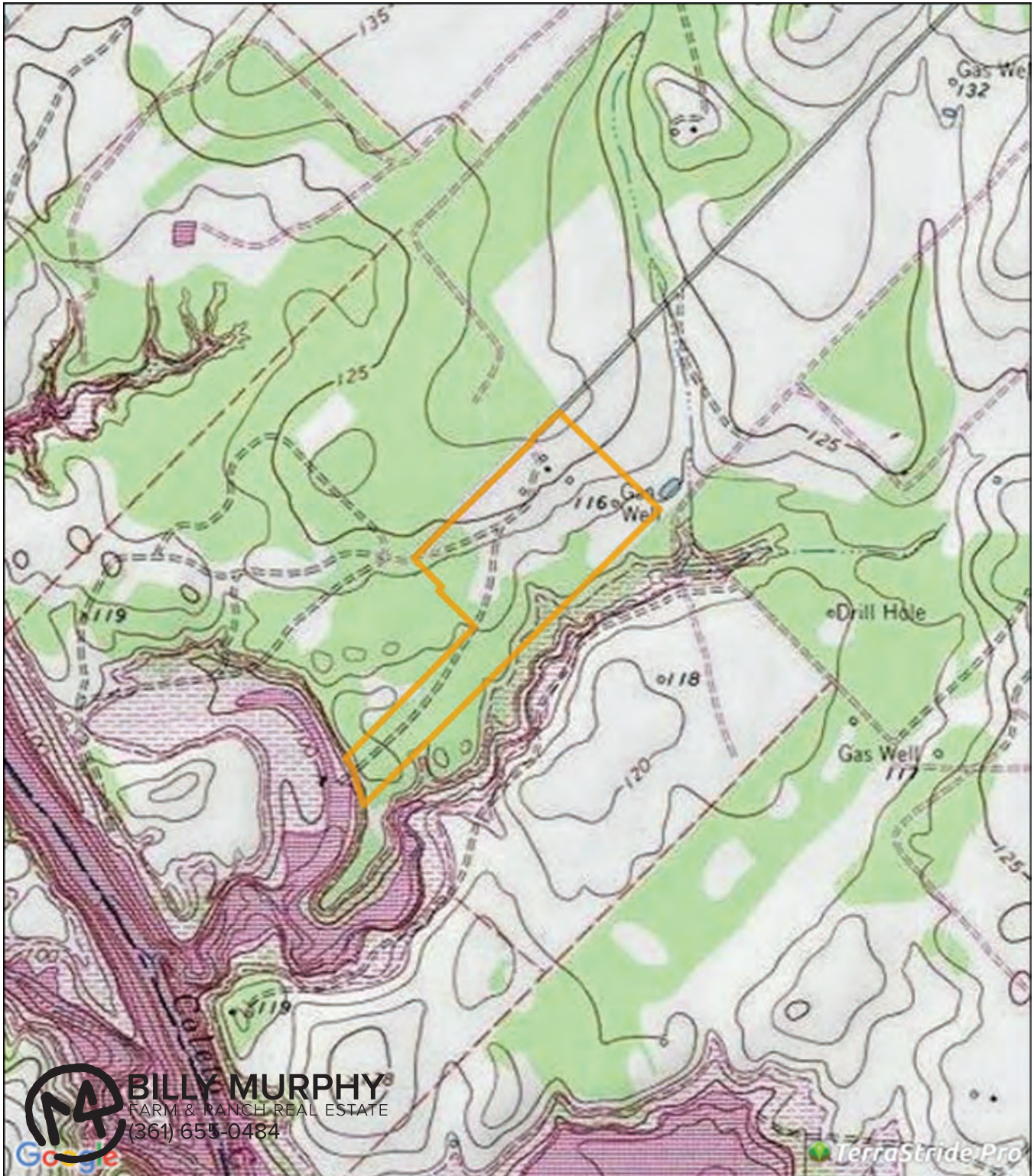
**BILLY MURPHY**  
FARM & RANCH REAL ESTATE  
(361) 655-0484



# COLETO LAKE COVE PROPERTY

60 +/- ACRES

VICTORIA COUNTY  
PROPERTY TOPO





# COLETO LAKE COVE PROPERTY

60 +/- ACRES

VICTORIA COUNTY  
COLETO LAKE MAP

