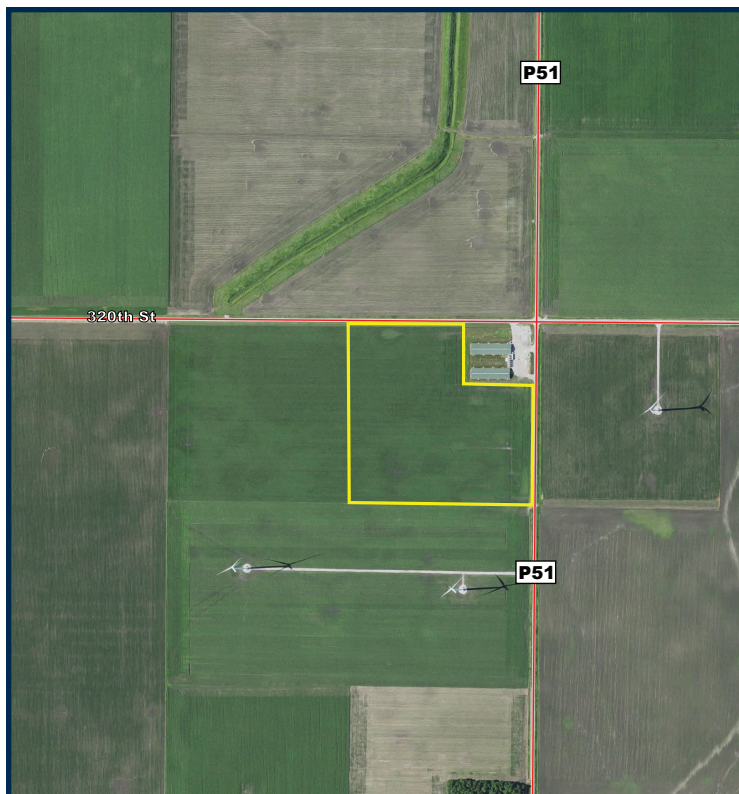


FARMLAND FOR SALE

Webster County, Iowa



34± ACRES
Call for Listing Price

Property Description

An excellent farm located south of Fort Dodge, Iowa.

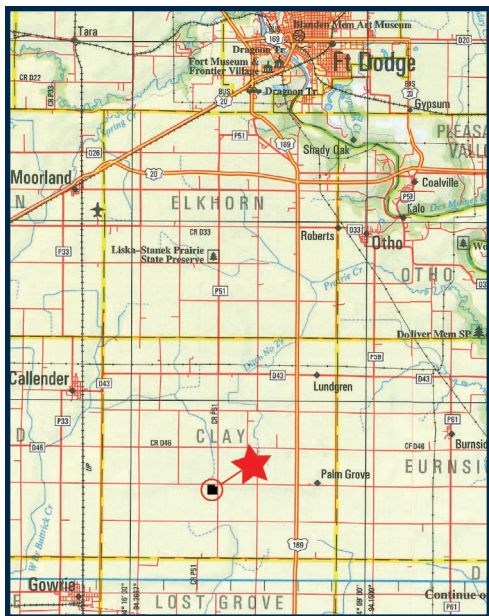
Location & Directions

Site Address: 3200 Co Hwy P51, Gowrie, IA 50543
Section 28, Clay Township, Webster County (T87N-R29W)

- 4 miles northeast of Gowrie
- 12 miles south of Fort Dodge
- 35 miles northwest of Ames

From Fort Dodge, follow 169 south 11 miles to 320th St. Turn right on 320th St. and follow it for 2.0 miles. The farm is located on the southwest corner of 320th and Highway P51 (Johnson Ave).

WWW.MWAAuctions.com



MWA
AUCTIONS &
REAL ESTATE

JOHN KIRKPATRICK

Broker #B2257000

Direct: (515) 532-2878 | Cell: (515) 851-1424

Email: john@mwallc.com

MWA AUCTIONS & REAL ESTATE

214 N Main Street
Clarion, IA 50525

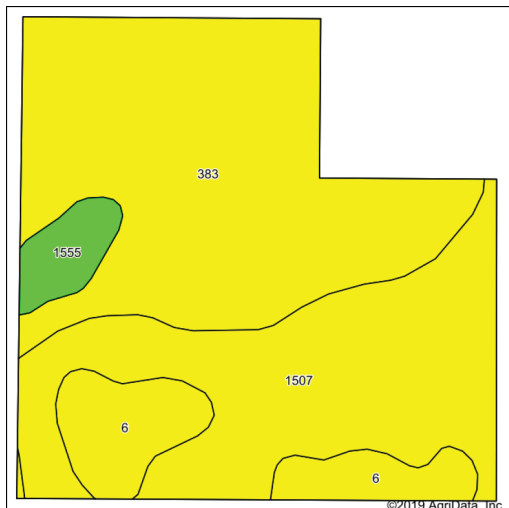


FARMLAND FOR SALE

Webster County, Iowa



Soil Map



Area Symbol: IA187 Soil Area Version: 35								
Code	Soil Description	Acres	Percent of field	CSR2 Legend	CSR2**	CSR	*n NCCPI Corn	*n NCCPI Soybeans
383	Marna silty clay loam, 0 to 2 percent slopes	16.72	49.2%		69	73	77	70
1507	Brownton silty clay loam, 0 to 2 percent slopes	12.23	36.0%		62	68	63	64
6	Okoboji silty clay loam, 0 to 1 percent slopes	3.82	11.2%		59	62	80	77
1555	Nicollet-Guckeen complex, 1 to 3 percent slopes	1.23	3.6%		86	86	79	72
Weighted Average					66	70.4	*n 72.4	*n 68.7

2019 Beans



2018 Corn



MWA AUCTIONS & REAL ESTATE
 214 N Main Street
 Clarion, IA 50525
 (800) 607-6888
www.MWAAuctions.com

JOHN KIRKPATRICK
 Broker #B2257000
 Direct: (515) 532-2878
 Cell: (515) 851-1424
 Email: john@mwallc.com

