

WASHINGTON COUNTY



BRANCH

FARM & TIMBERLAND

259 +/- ACRES





Description:

Steel Creek Farm is a beautiful property in an established farming and timber area of Georgia. It has excellent soils and access to markets. It is currently in longleaf pine, dry-land row crop and hardwood with extensive frontage along Steel Creek.

The approximately sixty acres of dry-land row crop is ready to plant in row crops or longleaf pine.

Location: Hwy 231 just outside of Davisboro

Price: \$1950.00 per acre

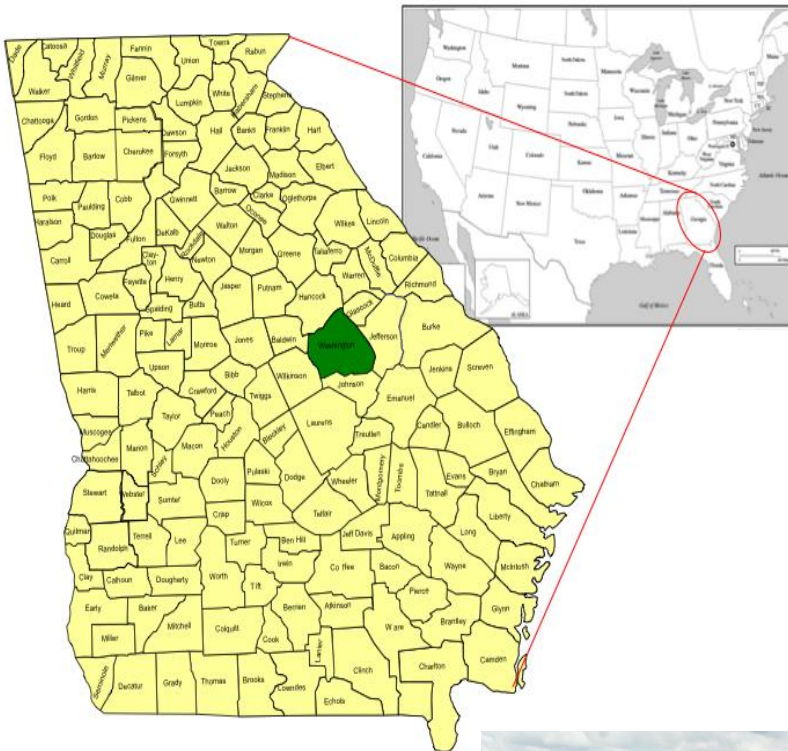
Contact:

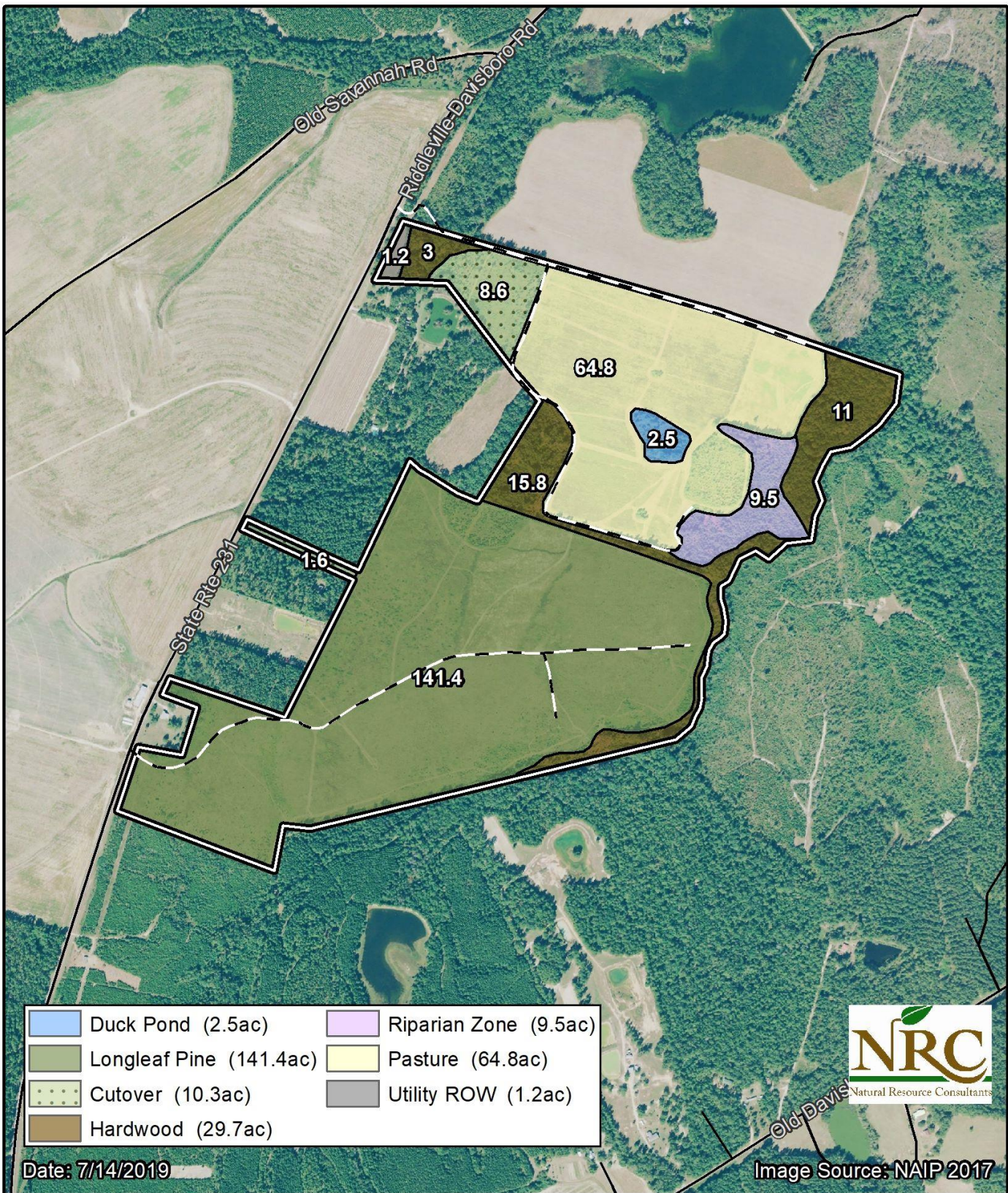
Jim Branch

(404) 983-4266

jim@branchtimberlands.com

Farmland/Timberland Investment





Steel Creek

Washington Co., GA (259+/- ac.)

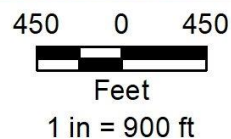


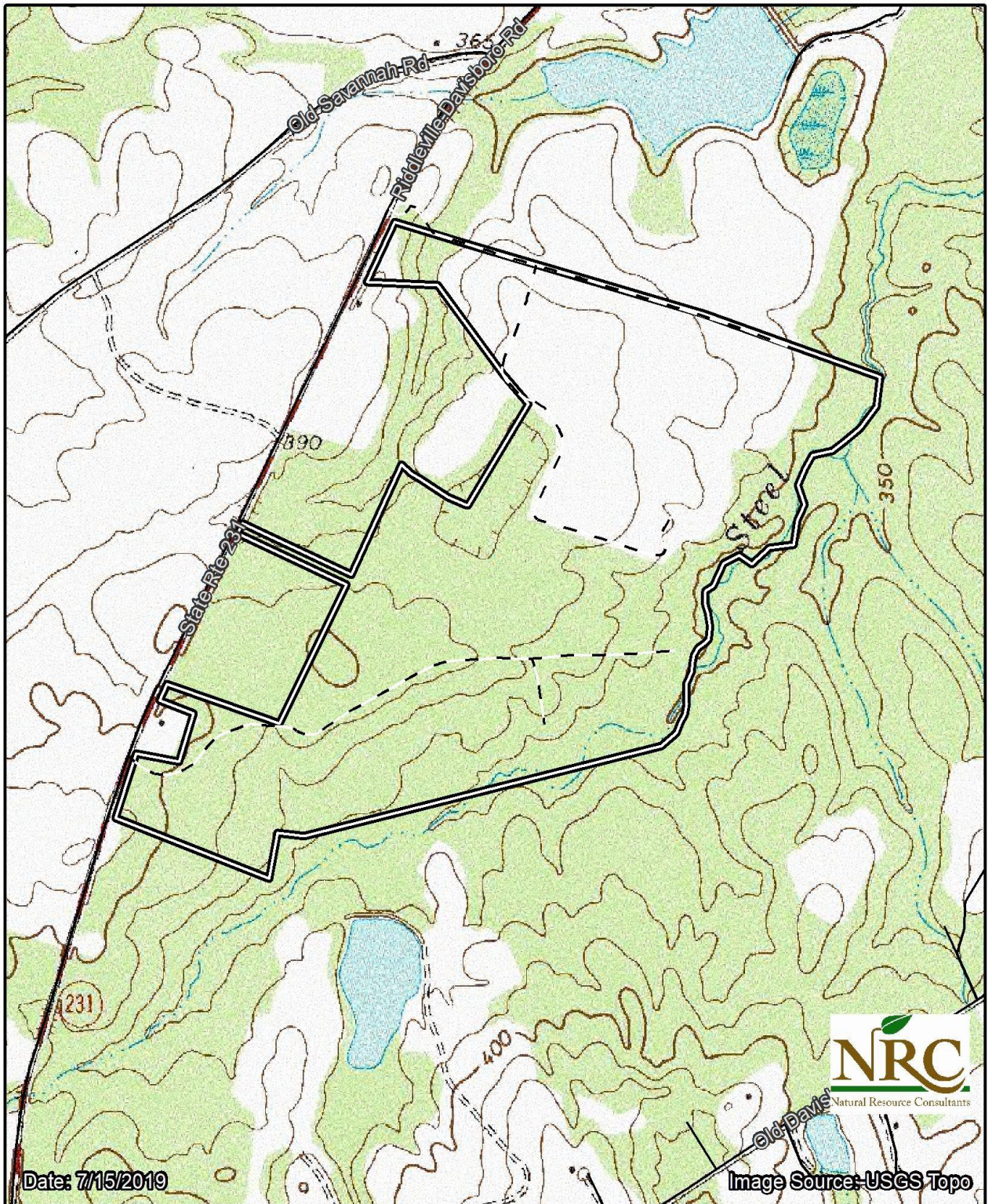


Image Source: NAIP 2017



Feet
1 in = 900 ft

Washington Co., GA (259+/- ac.)



Date: 7/15/2019



Image Source: USGS Topo



Steel Creek
Washington Co., GA (259+/- ac.)

450 0 450



Feet

1 in = 900 ft



BRANCH
FARM & TIMBERLAND

