

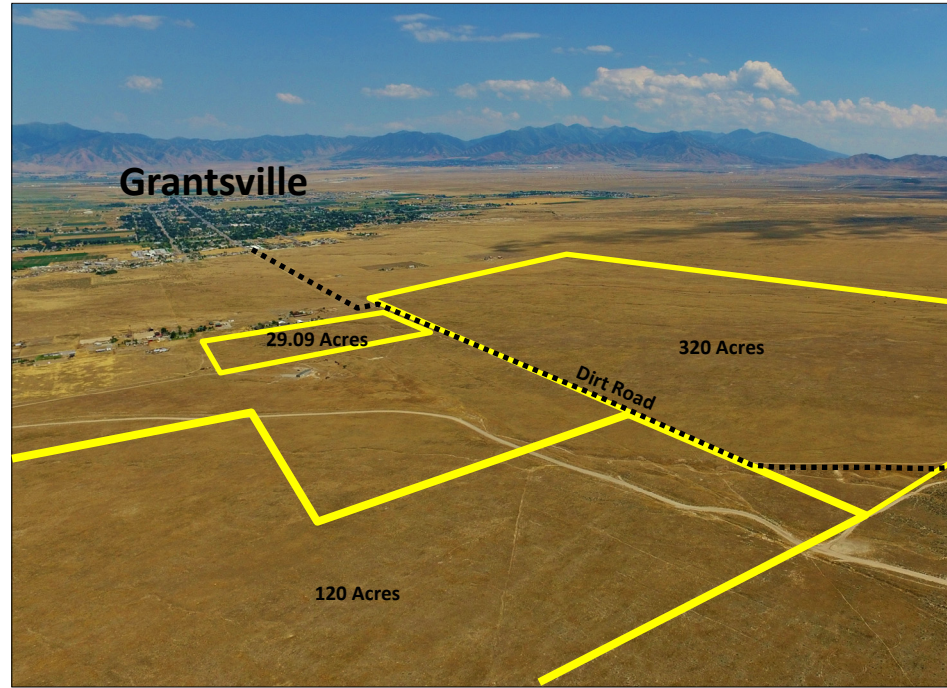
PRICE REDUCED

See more information at www.hciutah.com

West Grantsville 469 Acres

469.08 acres in Grantsville City & Tooele County, Utah

(SOLD TOGETHER OR IN THREE PARCELS)



EXECUTIVE SUMMARY:

List Prices:

29.09 Acres: \$116,360

120 Acres: \$450,000

320 Acres: \$959,970

Bulk Price - 469 Acres: \$1,481,785

Mike Nelson | Dan Nelson

801-482-7565 | mike@hciutah.com

Notice: This information is believed to be accurate, but no warranty is expressed or implied. Highland Commercial insists that interested parties conduct their own research and investigations. The property is offered subject to prior sale, price change, and withdrawal without notice. No obligations will be created unless a purchase contract is signed by both buyer and seller. We welcome the cooperation of participating brokers; please contact us for our commission-sharing policies. All images and materials are copyright protected and are the property of Highland Commercial.

- 469.08 acres in Grantsville City & Tooele County, Utah
- 2017 Taxes: \$38.77 (Greenbelt)
- Zoned A-10 (10-acre lot size) in Grantsville City and MU-40 (40-acre lot size) in Tooele County
- Located along the west extension road of Main Street approximately 1.2 miles west of the paved roadway
- One mile from Walmart Distribution Center
- 7 miles from I-80
- 10 miles from Tooele City, Utah
- 11 miles from Stansbury Park, Utah
- 37 miles from Salt Lake City, Utah



2733 East Parley's Way, Suite 304

Salt Lake City, UT 84109

801-487-6100

www.hciutah.com

