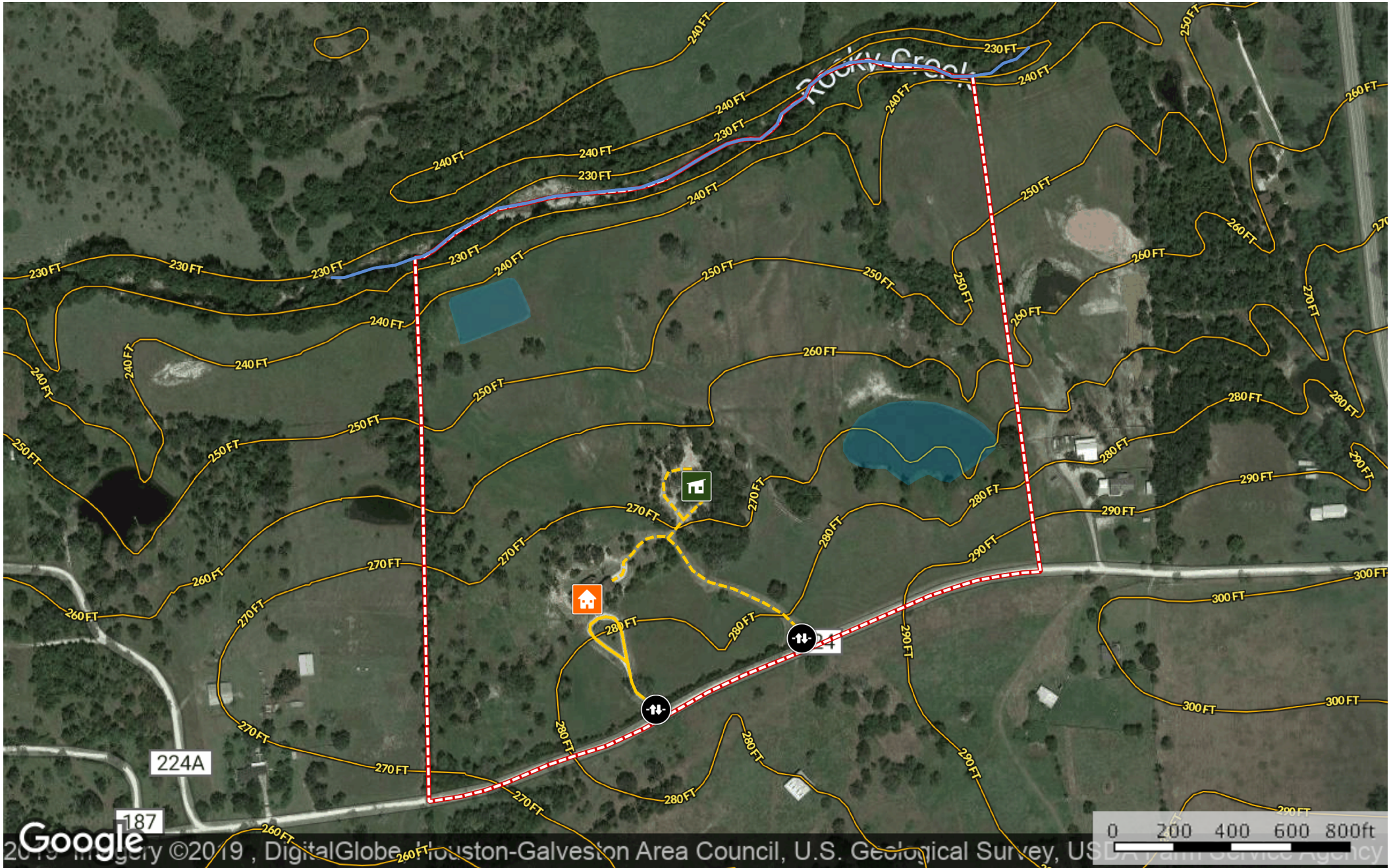




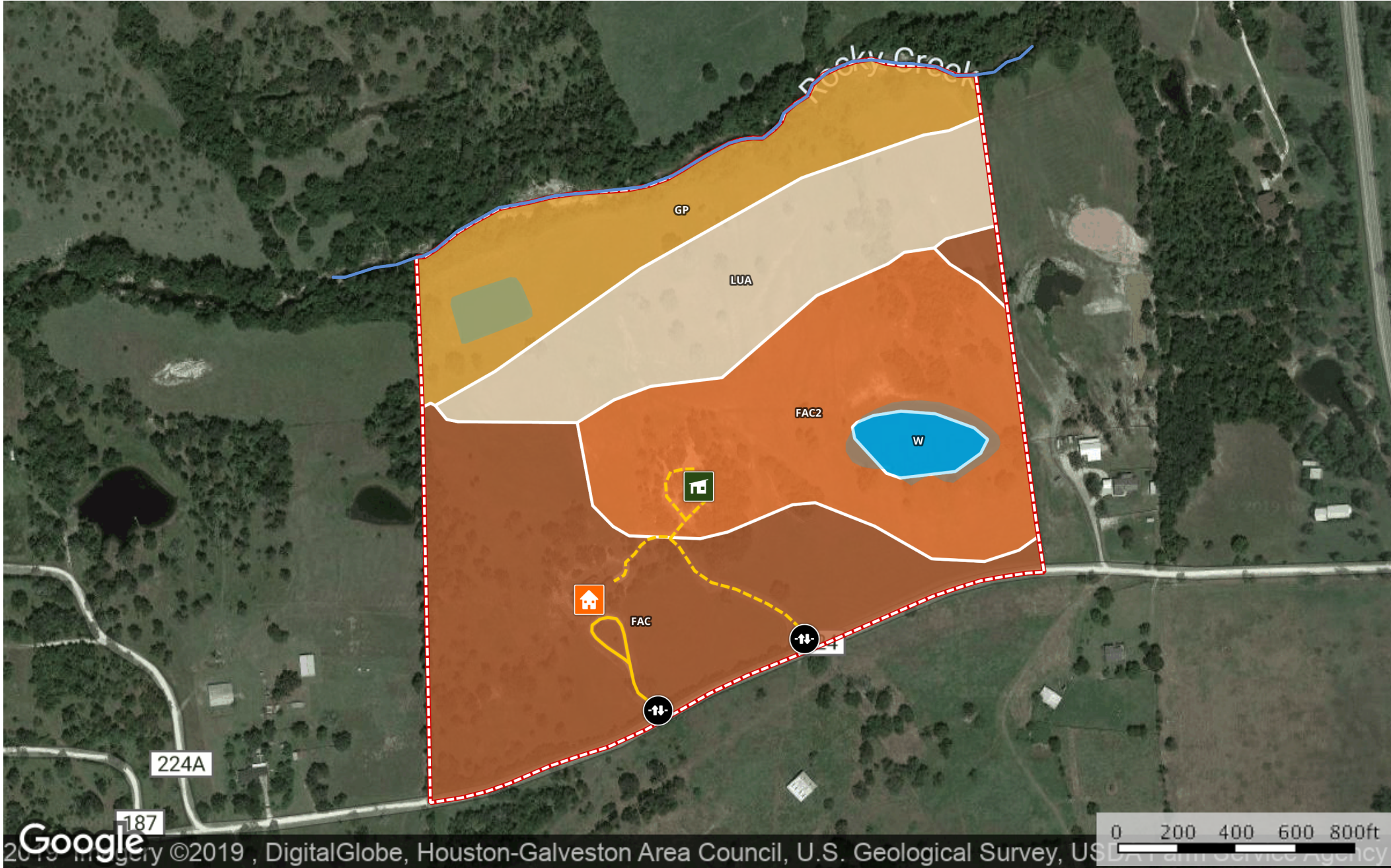
- House
- Shop
- Gate
- Road / Trail
- Primary Road
- River / Creek
- Pond / Tank
- 3174 County Rd 224



- House
- Shop
- Gate
- Road / Trail
- Primary Road
- River / Creek
- Pond / Tank
- 3174 County Rd 224



House	Shop	Gate	Road / Trail	Primary Road	River / Creek	Pond / Tank	3174 County Rd 224	100 Year Floodplain	500 Year Floodplain
Floodway	Special	Unmapped/ Not Included							



- House
- Shop
- Gate
- Road / Trail
- Primary Road
- River / Creek
- Pond / Tank
- 3174 County Rd 224

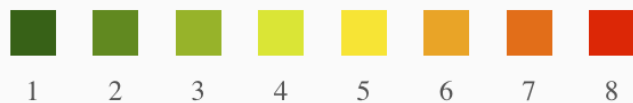
SOIL CODE	SOIL DESCRIPTION	ACRES	%	CAP
W	Water	1.3	2.0	-
FaC2	Falba fine sandy loam, 1 to 5 percent slopes, eroded	16.5	26.39	4e
LuA	Lufkin fine sandy loam, 0 to 1 percent slopes	11.7	18.64	3w
Gp	Gowker clay loam, frequently flooded	10.8	17.31	5w
FaC	Falba fine sandy loam, 1 to 5 percent slopes	22.3	35.66	4e
TOTALS		62.6	100%	3.91

Capability Legend

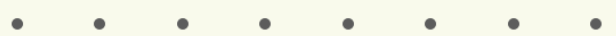
Increased Limitations and Hazards

Decreased Adaptability and Freedom of Choice Users

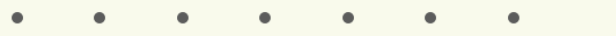
Land, Capability
Class(non-irrigated)



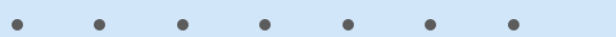
'Wild Life'



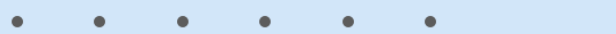
Forestry



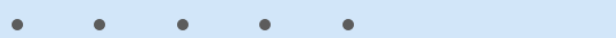
Limited



Moderate



Intense



Limited



Moderate



Intense



Very Intense



Grazing Cultivation

(c) climatic limitations (e) susceptibility to erosion

(s) soil limitations within the rooting zone (w) excess of water