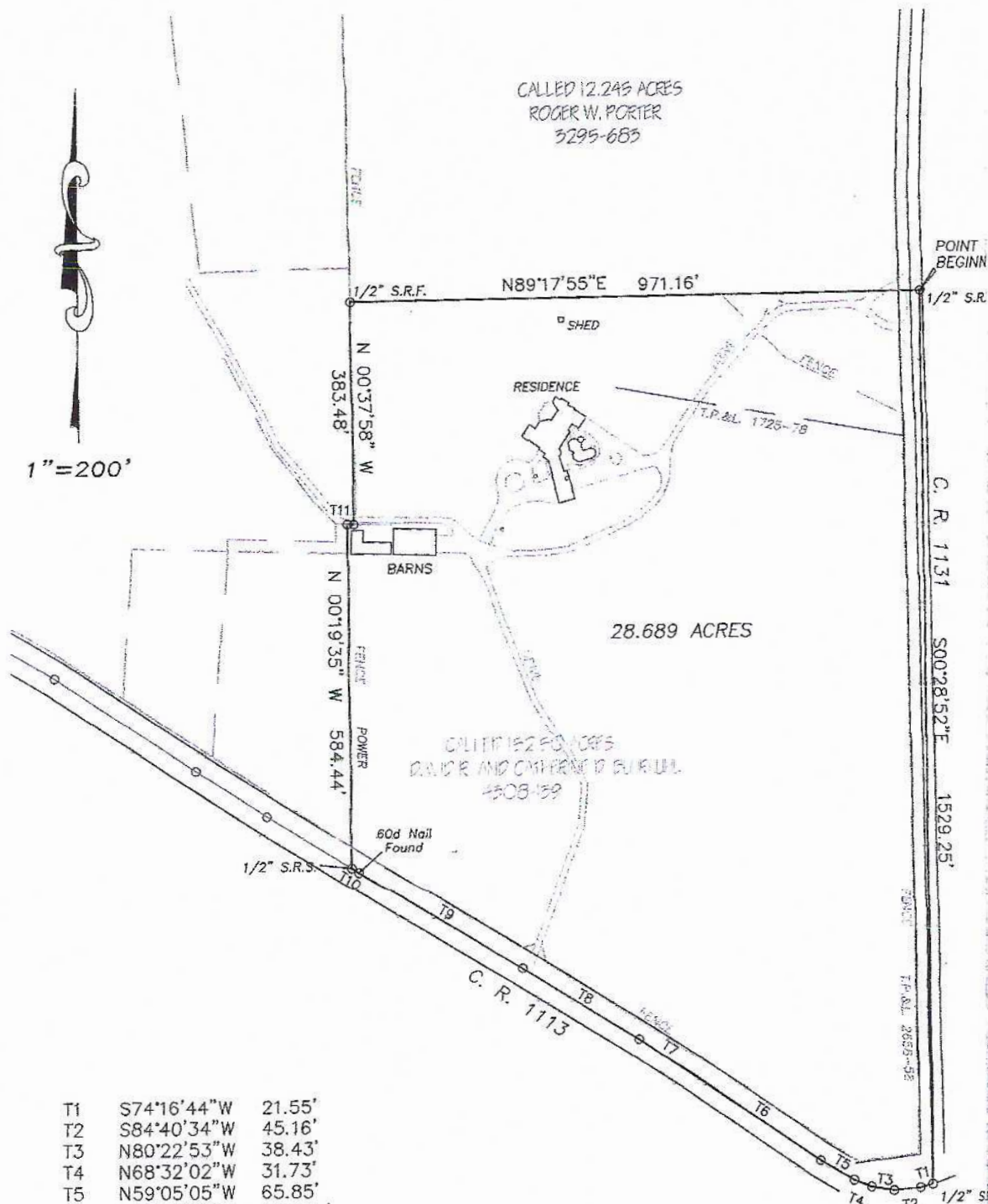


- Barn
- Main House
- Horse Stall
- Gate
- Photo Point
- Fence
- Boundary



CALL 12.245 ACRES  
ROGER W. PORTER  
3295-685



T1	S74°16'44"W	21.55'
T2	S84°40'34"W	45.16'
T3	N80°22'53"W	38.43'
T4	N68°32'02"W	31.73'
T5	N59°05'05"W	65.85'
T6	N55°09'23"W	269.98'
T7	N56°40'21"W	103.60'
T8	N58°12'10"W	234.13'
T9	N59°13'13"W	323.56'
T10	N58°24'23"W	14.79'
T11	S88°31'24"E	10.98'

NOTE: Bearings based upon monumented course of N01°27'46"W for  
F. M. 2661 along West line of said 152.50 acres.