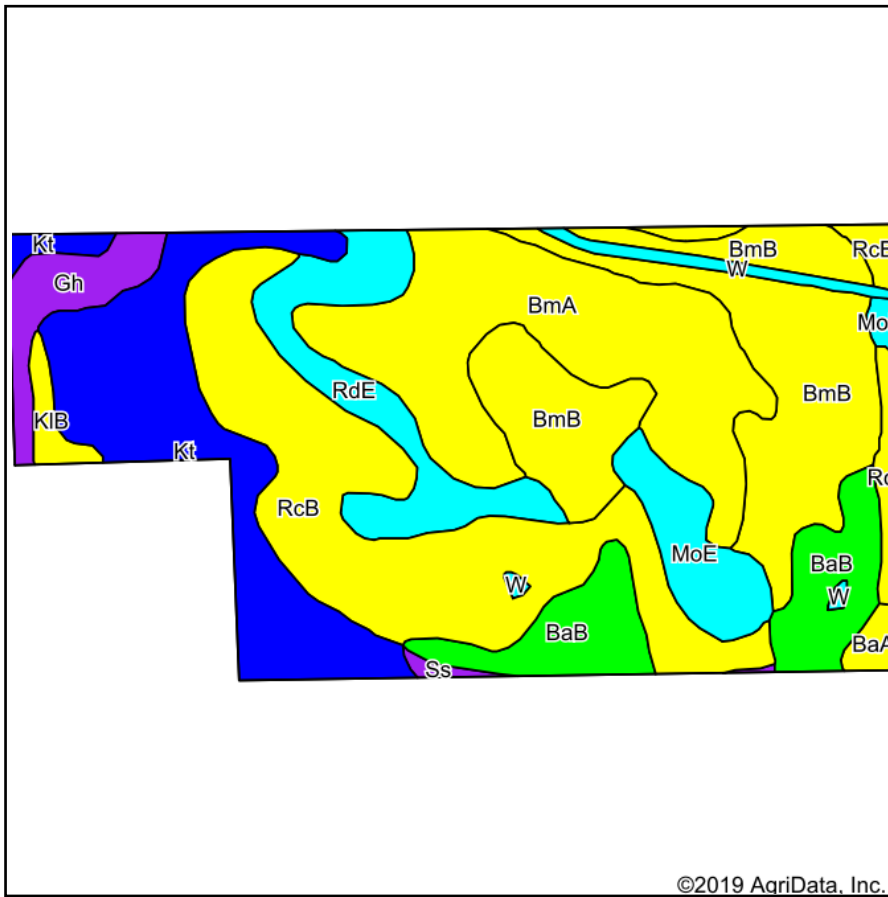
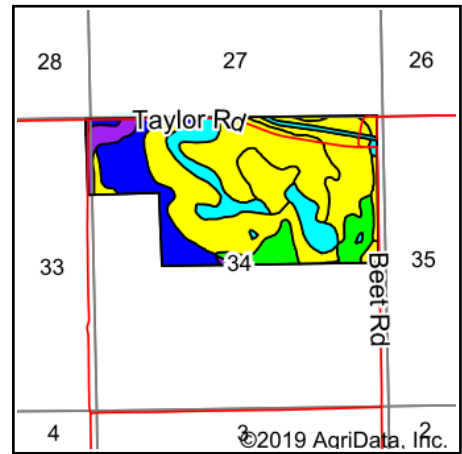


Soils Map



Soils data provided by USDA and NRCS.



State: **South Dakota**
 County: **Butte**
 Location: **34-10N-4E**
 Township: **West Butte**
 Acres: **282.06**
 Date: **8/13/2019**



Maps Provided By:

 CUSTOMIZED ONLINE MAPPING
 © AgriData, Inc. 2019 www.AgriDataInc.com



Area Symbol: SD019 Soil Area Version: 22

Code	Soil Description	Acres	Percent of field	PI Legend	Non-Irr Class *c	Irr Class *c	Productivity Index	Alfalfa hay Irrigated	Barley Irrigated	Oats Irrigated	Pasture Irrigated	*n NCCPI Overall	*n NCCPI Corn	*n NCCPI Small Grains	*n NCCPI Soybeans
RcB	Razor silty clay loam, 2 to 6 percent slopes	62.10	22.0%		IVe		57					19	9	17	19
BmB	Bidman loam, 2 to 6 percent slopes	52.95	18.8%		IIIe		51	4	70	80	7	40	15	23	40
BmA	Bidman loam, 0 to 2 percent slopes	51.90	18.4%		IIIIs		59	4	70	80	7	41	16	23	41
Kt	Kyle clay, terrace	40.44	14.3%		IVs	IVs	65					20	8	16	20
BaB	Baca silty clay loam, 2 to 6 percent slopes	22.94	8.1%		IIIe		43					45	20	29	45
RdE	Redig clay loam, 9 to 25 percent slopes	20.22	7.2%		Vle		14					22	9	10	22
MoE	Midway silty clay loam, 6 to 25 percent slopes	12.34	4.4%		Vle		8					7	4	7	7
Gh	Glenberg and Haverson soils	9.31	3.3%		VIW		34					28	15	22	28
W	Water	3.85	1.4%		VIII		0						0	0	0

KIB	Kyle clay, 2 to 6 percent slopes	2.89	1.0%		IVe		51					25	10	19	25
BaA	Baca silty clay loam, 0 to 2 percent slopes	2.10	0.7%		IIIIs		50					46	20	29	46
Ss	Stetter clay, channeled	1.02	0.4%		VIw		29					14	7	8	14
Weighted Average							49.3	1.5	26	29.7	2.6	*n 29.2	*n 12.1	*n 19.1	*n 29.2

*n: The aggregation method is "Weighted Average using major components"

*c: Using Capabilities Class Dominant Condition Aggregation Method

Soils data provided by USDA and NRCS.