

# Kingwood Forestry Services, Inc.

## Notice of Land Sales

**-Two (2) Tracts Offered Together or Separately -**  
**Bid Date: Friday, September 13, 2019, @ 10.00 a.m.**

### Tompkins 40 Tract

**±40 Acres**

**Listing #4659**

### Black Creek 40 Tract

**±40 Acres**

**Listing #4658**

The **Tompkins 40** and **Black Creek 40** tracts are located about six (6) miles east of Rosston. The tracts have immediate timber income potential and excellent hunting. Pine and hardwood sawtimber of good quality. Please visit our website at [www.kingwoodforestry.com](http://www.kingwoodforestry.com) to view maps and photographs.

The **Tompkins 40 Tract (Listing #4659)** is described as SW¼ of NW¼, Section 15, Township 13 South, Range 20 West, containing 40 acres, more or less, Nevada County, Arkansas. ±29 acres of mature native pine hardwood and ±11 acres around Cypress Creek. Access is woods road through adjacent landowners. Site index for loblolly pine (base age 50) averages eighty-five (85) feet on silt loam and fine sandy loam soils. Based on Kingwood's August, 2018 inventory on ±29 timbered acres, estimated tree counts & timber volumes are as follows\*:

| Product           | Trees | Bd. Ft. | Tons  |
|-------------------|-------|---------|-------|
| Pine Sawtimber    | 167   | 49,544  | 319   |
| Pine Pulpwood     | 349   | ----    | 78    |
| Oak Sawtimber     | 450   | 55,760  | 472   |
| Misc. Sawtimber   | 34    | 3,641   | 32    |
| Hardwood Pulpwood | 3,708 | ----    | 1,532 |



Based on estimates, Pine Sawtimber averages 18.9" dbh and 297 BF / Tree; Oak Sawtimber 17.1" dbh and 124 BF / Tree.

The **Black Creek 40 Tract (Listing #4658)** is described as NW¼ of NW¼, Section 9, Township 14 South, Range 20 West, containing 40 acres, more or less, Nevada County, Arkansas. Good quality mature native pine and hardwood. Access is oil well road to the north portion of property and woods road to the south portion. Site index for loblolly pine (base age 50) averages eighty-five (85) feet on silt loam and fine sandy loam soils. Based on Kingwood's August, 2018 inventory on ±16 timbered acres, estimated tree counts & timber volumes are as follows\*:

| Product           | Trees | Bd. Ft. | Tons |
|-------------------|-------|---------|------|
| Pine Sawtimber    | 437   | 82,236  | 596  |
| Pine Chip N' Saw  | 85    | 3,390   | 39   |
| Pine Pulpwood     | 245   | ----    | 98   |
| Oak Sawtimber     | 171   | 29,557  | 235  |
| Misc. Sawtimber   | 53    | 7,134   | 60   |
| Hardwood Pulpwood | 373   | ----    | 228  |



Based on estimates, Pine Sawtimber averages 16.4" dbh and 138 BF / Tree; Oak Sawtimber 18.9" dbh and 173 BF / Tree.

Bids may be Submitted for Either or Both Tracts  
**Bid Date: Friday, September 13, 2019 @ 10:00 a.m.**  
**[www.kingwoodforestry.com](http://www.kingwoodforestry.com)**

\*Due to variations in cruising methods, utilization standards, and scaling practices, tree counts and volume estimates cannot be guaranteed. Volume reports in Tons and Board Feet are attached; additional timber volume reports (tree counts by species, diameter, height) are available on our website: <http://www.kingwoodforestry.com/real-estate.html>

P.O. Box 65  
 No. 4 Executive Circle  
 Arkadelphia, AR 71923  
 (870)246-5757  
 FAX 1-870-246-3341  
 E-mail: [arkadelphia@kingwoodforestry.com](mailto:arkadelphia@kingwoodforestry.com)



**See Method and  
 Conditions of Sale  
 On Next Page**

# NOTICE OF LAND SALES

**Bid Date: Friday, September 13, 2019 @ 10:00 a.m.**

**Tompkins 40 Tract—Listing #4659  
±40 Acres**

**Black Creek 40 Tract—Listing #4658  
±40 Acres**

## METHOD OF SALE

These tracts will be sold on the basis of lump sum sealed bids. Bids may be submitted for either or both tracts. An offer form is attached. Bids will be opened at the Kingwood Forestry office at #4 Executive Circle, Arkadelphia, Arkansas at **10:00 a.m., Friday, September 13, 2019.** Buyers submitting offers are welcome to attend the bid opening. Mailed bids should be addressed to Kingwood Forestry Services, Inc., P.O. Box 65, Arkadelphia, AR 71923 with **“Tompkins 40 & Black Creek 40 Land Sales”** clearly marked in the lower left corner of the envelope to protect the security of the offer. On mailed offers, please call our office prior to bid opening to confirm receipt of offer. Bids may also be delivered by fax to 870-246-3341 or by e-mail to [Arkadelphia@kingwoodforestry.com](mailto:Arkadelphia@kingwoodforestry.com). All faxed / e-mailed bids will be immediately acknowledged; please await confirmation that your faxed / e-mailed bid has been received. No verbal telephone bids will be accepted. Anyone submitting an offer for the purchase of these properties will be provided with a summary of bid results.

## CONDITIONS OF SALE

1. The landowners reserve the right to accept or reject any offer or to reject all offers.
2. Offers submitted will remain valid through 10:00 a.m. Wednesday, September 18, 2019. Successful bidder(s) will be notified on or before that time by telephone, fax, or e-mail. Upon acceptance of an offer, a Contract of Sale with earnest money in the amount of five percent (5%) of purchase price will be executed between the successful bidder and landowners within seven (7) business days. A sample Contract of Sale may be provided in advance upon request. Terms are cash at closing. Closing is expected to be held within forty-five (45) days of offer acceptance.
3. Only offers for a specific dollar amount will be accepted. The parcels are being sold in their entirety for single sum(s) and not on a per-acre basis. Advertised acreage is believed to be correct but is not guaranteed. Offer price is for entire tract(s) regardless of acreage. Seller will not provide surveys. The attached maps are thought to be accurate but should not be considered survey plats.
4. Conveyance will be by Warranty Deed, subject to all previous mineral conveyances, reservations and exceptions, to any valid rights-of-way, easements, leaseholds, and to any protective covenants or restrictions, which may have been recorded affecting the property, with title assured through seller-provided title insurance policy. No environmental inspection or representation has been or will be made by seller. All mineral rights will be reserved by seller.
5. Seller will pay prorated property taxes (to date of closing), deed preparation, and one-half (½) of deed stamps. Buyer will pay recording fees and one-half (½) of deed stamps.
6. Local title company will conduct the closing with buyer and seller each paying one-half (½) of settlement fee.
7. If prospective buyers or their agents wish to inspect the property, such property inspections shall be done at reasonable times during daylight hours. Prospective buyers and their agents understand and acknowledge that while on the property, prospective buyers and their agents assume all liability and shall indemnify Seller and its agents, property managers and Kingwood Forestry Services from and against all claims, demands, or causes of action, of every kind, nature and description relating to its access to or presence on the property.
8. Hunting equipment (such as deer stands, feeders, trail cameras, etc.) and any other man-made items found on the property do not convey unless stated otherwise.
9. Kingwood Forestry is the real estate firm acting as agent for the seller. All information presented in this prospectus is believed to be accurate. Prospective buyers are advised to verify information presented in this sale notice.
10. Questions regarding the land sale should be directed to licensed sales agents Jimmy Don Thomas or Brian Clark, or broker Pete Prutzman, of Kingwood Forestry Services at 870-246-5757 or by e-mail to [Arkadelphia@kingwoodforestry.com](mailto:Arkadelphia@kingwoodforestry.com)

**Notice:** Any person receiving this land sale marketing material is considered a prospective buyer for the subject property. Should a prospective buyer or its agents choose to inspect the property, they do so at their own risk and assume all liability and shall indemnify Seller and its agents against any and all claims, demands or causes of action, of every kind, nature and description relating to its access to or presence on the property.

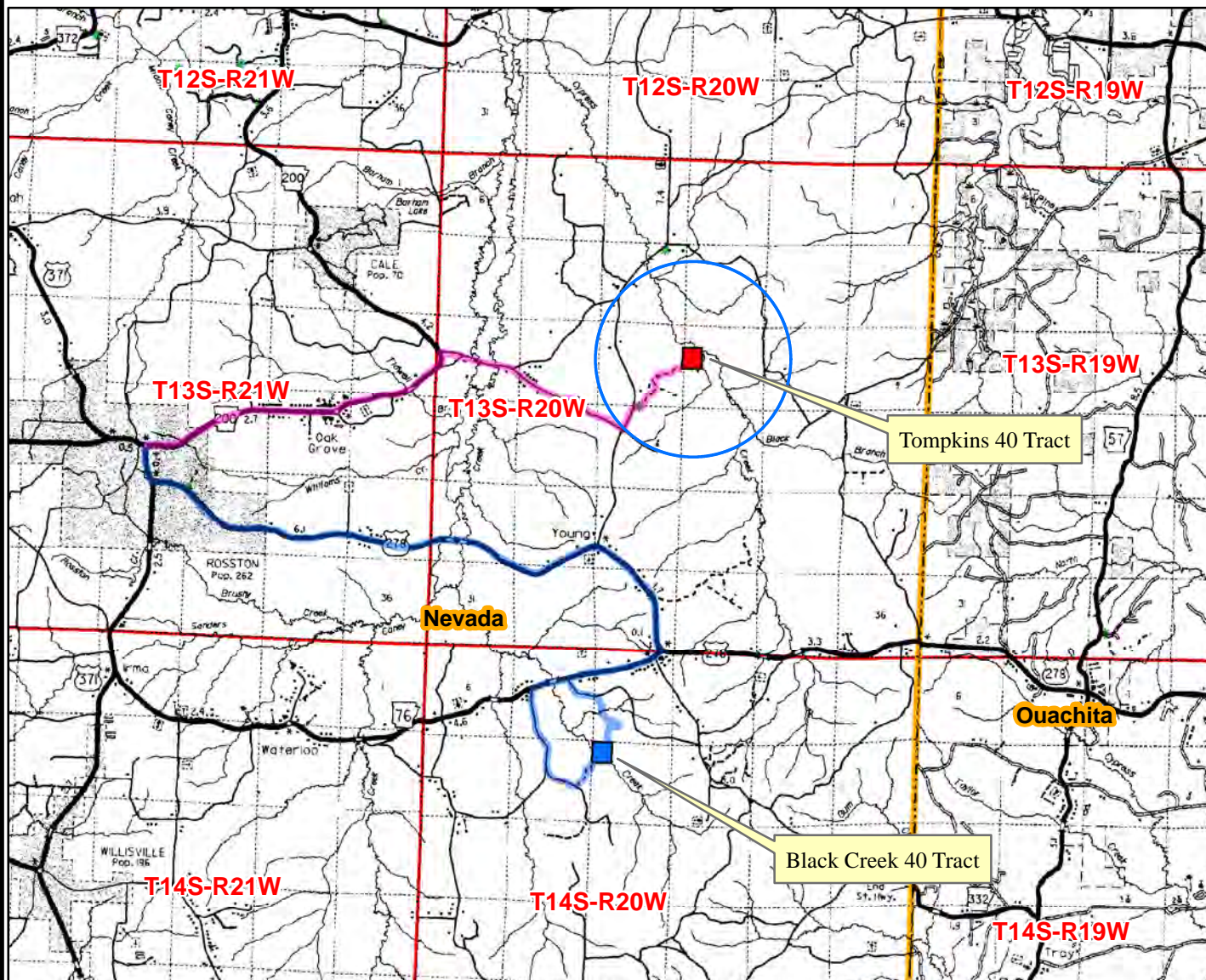
**[www.kingwoodforestry.com](http://www.kingwoodforestry.com)**



**"Tompkins 40 Tract" - Listing #4659**  
 SW¼ of NW¼, Sec. 15, T13S, R20W  
 Nevada County, Arkansas  
 Containing 40 acres, more or less

## NOTICE OF LAND SALES

**"Black Creek 40 Tract" - Listing #4658**  
 NW¼ of NW¼, Sec. 9, T14S, R20W  
 Nevada County, Arkansas  
 containing 40 acres, more or less



### Tompkins 40 Tract DRIVING DIRECTIONS:

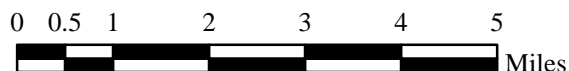
In Rosston, at the intersection of Highway 278, 200, and 371, drive east on Highway 200 for 4.0 miles and turn right (east) on Nevada County Road 10. Drive .9 mile and veer right (east), staying on County Road 10. Drive 1.5 miles and turn left (north) on Nevada County Road 47. Drive .3 mile and turn right (northeast) on woods road, marked with Land For Sale arrow sign. Follow blue flags along woods road for .9 mile to southwest corner of tract, marked with Land For Sale sign, pink KFS flagging, and yellow line.

### Black Creek 40 - NORTH ACCESS DRIVING DIRECTIONS:

In Rosston, at the intersection of Highway 278, 200, and 371, drive south on Highway 371 for .5 mile and veer left (east) on Highway 278. Drive 7.5 miles and turn right (west) on Highway 76. Drive 1.2 miles and turn left (south) on Nevada County Road 158. Drive .5 mile and turn right (south) on dirt road and Land For Sale arrow sign. Drive .5 mile and turn right (south) on dirt road and Land For Sale arrow sign. Drive .3 mile to north boundary of tract, marked with Land For Sale sign, pink KFS flagging, and yellow line.

### Black Creek 40 - SOUTH ACCESS DRIVING DIRECTIONS:

In Rosston, at the intersection of Highway 278, 200, and 371, drive south on Highway 371 for .5 mile and veer left (east) on Highway 278. Drive 7.5 miles and turn right (west) on Highway 76. Drive 1.7 miles and turn left (south) on Nevada County Road 174. Drive 1.5 miles and veer left (southeast) on dirt road and at Land For Sale arrow sign. Drive .5 mile and turn left (north) on woods road and at Land For Sale arrow sign. Follow blue flags along woods road for .4 mile to southwest corner of tract, marked with Land For Sale sign, pink KFS flagging, and yellow/orange line.



Date: 8/13/2019  
 Drawn By: JDT

**NOTICE OF LAND SALE**  
**"Tompkins 40" - Listing #4659**  
**SW¼ of NW¼, Sec. 15, T13S, R20W, Nevada County, Arkansas**  
**Containing 40 acres, more or less**

**Stands**



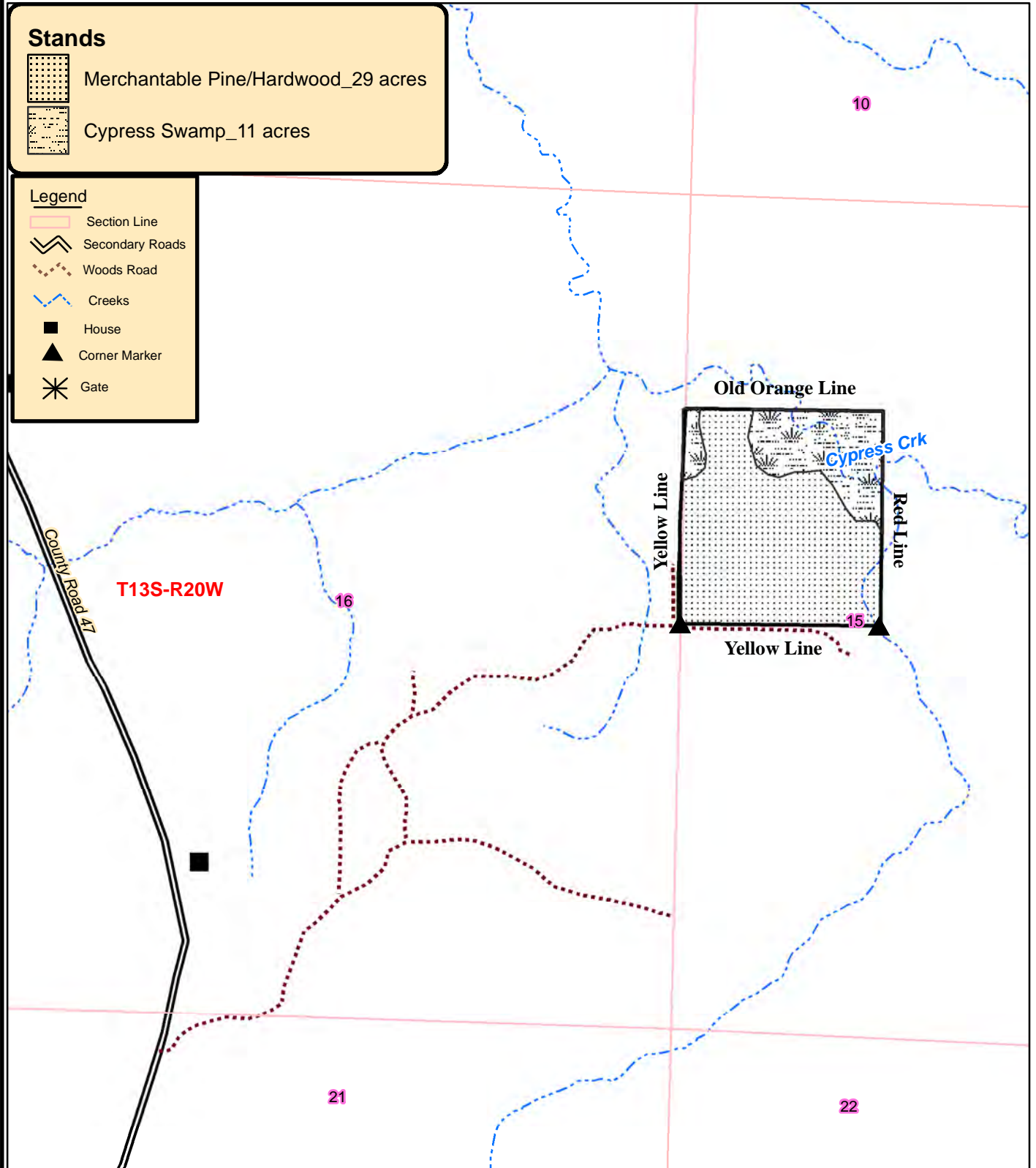
Merchantable Pine/Hardwood\_29 acres



Cypress Swamp\_11 acres

**Legend**

- Section Line
- Secondary Roads
- Woods Road
- Creeks
- House
- Corner Marker
- Gate



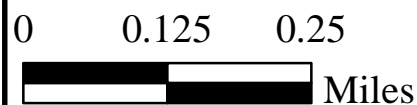
0 0.125 0.25  
  
Miles



Created: Date: 8/13/2019  
By: JDT



**NW¼ of NW¼, Sec. 9, T14S, R20W, Nevada County, Arkansas  
containing 40 acres, more or less**



**Created: Date: 8/13/2019**  
**By: JDT**



**Kingwood Forestry Services**  
No. 4 Executive Circle  
Arkadelphia, AR 71923

Phone: 870-246-5757  
Fax: 870-246-3341  
Email: arkadelphia@kingwoodforestry.com  
Website: www.kingwoodforestry.com

## ***Tompkins 40 - Timber Volume Estimates***

**Stratum:** Merch PH

**Acres:** 29

**Plots:** 27

**Cruiser:** JDT

**Cruise Date:** 08/06/2018

**Cruise Type:** Point

**Plot Size/BAF:** 15.00

### **Pine**

| Product            | Stratum Total |            |               |             | Per Acre  |             |                |             | Average Tree |  |
|--------------------|---------------|------------|---------------|-------------|-----------|-------------|----------------|-------------|--------------|--|
|                    | Trees         | Tons       | Doyle BF      | B.A         | Trees     | Tons        | Doyle BF       | DBH         | Height       |  |
| Sawtimber          | 167           | 319        | 49,544        | 11.7        | 6         | 11.0        | 1,708.4        | 18.9        | 49.0         |  |
| Pulpwood           | 349           | 78         | 0             | 3.3         | 12        | 2.7         | 0.0            | 6.8         | 36.2         |  |
| Topwood            | 0             | 42         | 0             | 0.0         | 0         | 1.5         | 0.0            | 0.0         | 0.0          |  |
| <b>Class Total</b> | <b>515</b>    | <b>440</b> | <b>49,544</b> | <b>15.0</b> | <b>18</b> | <b>15.2</b> | <b>1,708.4</b> | <b>10.7</b> | <b>40.4</b>  |  |

### **Oak**

| Product            | Stratum Total |              |               |             | Per Acre  |             |                |             | Average Tree |  |
|--------------------|---------------|--------------|---------------|-------------|-----------|-------------|----------------|-------------|--------------|--|
|                    | Trees         | Tons         | Doyle BF      | B.A         | Trees     | Tons        | Doyle BF       | DBH         | Height       |  |
| Sawtimber          | 450           | 472          | 55,760        | 25.6        | 16        | 16.3        | 1,922.7        | 17.1        | 25.8         |  |
| Pulpwood           | 1,768         | 937          | 0             | 37.8        | 61        | 32.3        | 0.0            | 10.3        | 37.4         |  |
| <b>Class Total</b> | <b>2,217</b>  | <b>1,409</b> | <b>55,760</b> | <b>63.3</b> | <b>76</b> | <b>48.6</b> | <b>1,922.7</b> | <b>11.7</b> | <b>35.1</b>  |  |

### **Misc. Hardwood**

| Product             | Stratum Total |              |                |              | Per Acre   |             |                |             | Average Tree |  |
|---------------------|---------------|--------------|----------------|--------------|------------|-------------|----------------|-------------|--------------|--|
|                     | Trees         | Tons         | Doyle BF       | B.A          | Trees      | Tons        | Doyle BF       | DBH         | Height       |  |
| Sawtimber           | 34            | 32           | 3,641          | 1.7          | 1          | 1.1         | 125.6          | 16.2        | 30.1         |  |
| Pulpwood            | 1,940         | 595          | 0              | 27.2         | 67         | 20.5        | 0.0            | 8.3         | 34.0         |  |
| <b>Class Total</b>  | <b>1,973</b>  | <b>628</b>   | <b>3,641</b>   | <b>28.9</b>  | <b>68</b>  | <b>21.6</b> | <b>125.6</b>   | <b>8.4</b>  | <b>33.9</b>  |  |
| <b>StratumTotal</b> | <b>4,706</b>  | <b>2,477</b> | <b>108,945</b> | <b>107.2</b> | <b>162</b> | <b>85.4</b> | <b>3,756.7</b> | <b>10.2</b> | <b>35.2</b>  |  |

## ***Timber Volume Estimates - Black Creek 40***

**Stratum:** Merchantable PH 16 ac

**Acres:** 16

**Plots:** 15

**Cruiser:** JDT

**Cruise Date:** 08/13/2019

**Cruise Type:** Plot

**Plot Size/BAF:** 0.10

### **Pine**

| Product            | Stratum Total |            |               |             | Per Acre  |             |                |             | Average Tree |  |
|--------------------|---------------|------------|---------------|-------------|-----------|-------------|----------------|-------------|--------------|--|
|                    | Trees         | Tons       | Doyle BF      | B.A         | Trees     | Tons        | Doyle BF       | DBH         | Height       |  |
| Sawtimber          | 437           | 596        | 82,236        | 41.4        | 27        | 37.3        | 5,139.8        | 16.4        | 45.6         |  |
| Chip-N-Saw         | 85            | 39         | 3,390         | 3.1         | 5         | 2.4         | 211.8          | 10.4        | 36.5         |  |
| Pulpwood           | 245           | 98         | 0             | 7.0         | 15        | 6.1         | 0.0            | 8.8         | 44.4         |  |
| Topwood            | 0             | 85         | 0             | 0.0         | 0         | 5.3         | 0.0            | 0.0         | 0.0          |  |
| <b>Class Total</b> | <b>768</b>    | <b>818</b> | <b>85,626</b> | <b>51.5</b> | <b>48</b> | <b>51.1</b> | <b>5,351.6</b> | <b>13.3</b> | <b>44.2</b>  |  |

### **Oak**

| Product            | Stratum Total |            |               |             | Per Acre  |             |                |             | Average Tree |  |
|--------------------|---------------|------------|---------------|-------------|-----------|-------------|----------------|-------------|--------------|--|
|                    | Trees         | Tons       | Doyle BF      | B.A         | Trees     | Tons        | Doyle BF       | DBH         | Height       |  |
| Sawtimber          | 171           | 235        | 29,557        | 21.4        | 11        | 14.7        | 1,847.3        | 18.9        | 30.0         |  |
| Pulpwood           | 160           | 99         | 0             | 7.6         | 10        | 6.2         | 0.0            | 11.5        | 34.5         |  |
| <b>Class Total</b> | <b>331</b>    | <b>334</b> | <b>29,557</b> | <b>29.0</b> | <b>21</b> | <b>20.9</b> | <b>1,847.3</b> | <b>15.3</b> | <b>32.2</b>  |  |

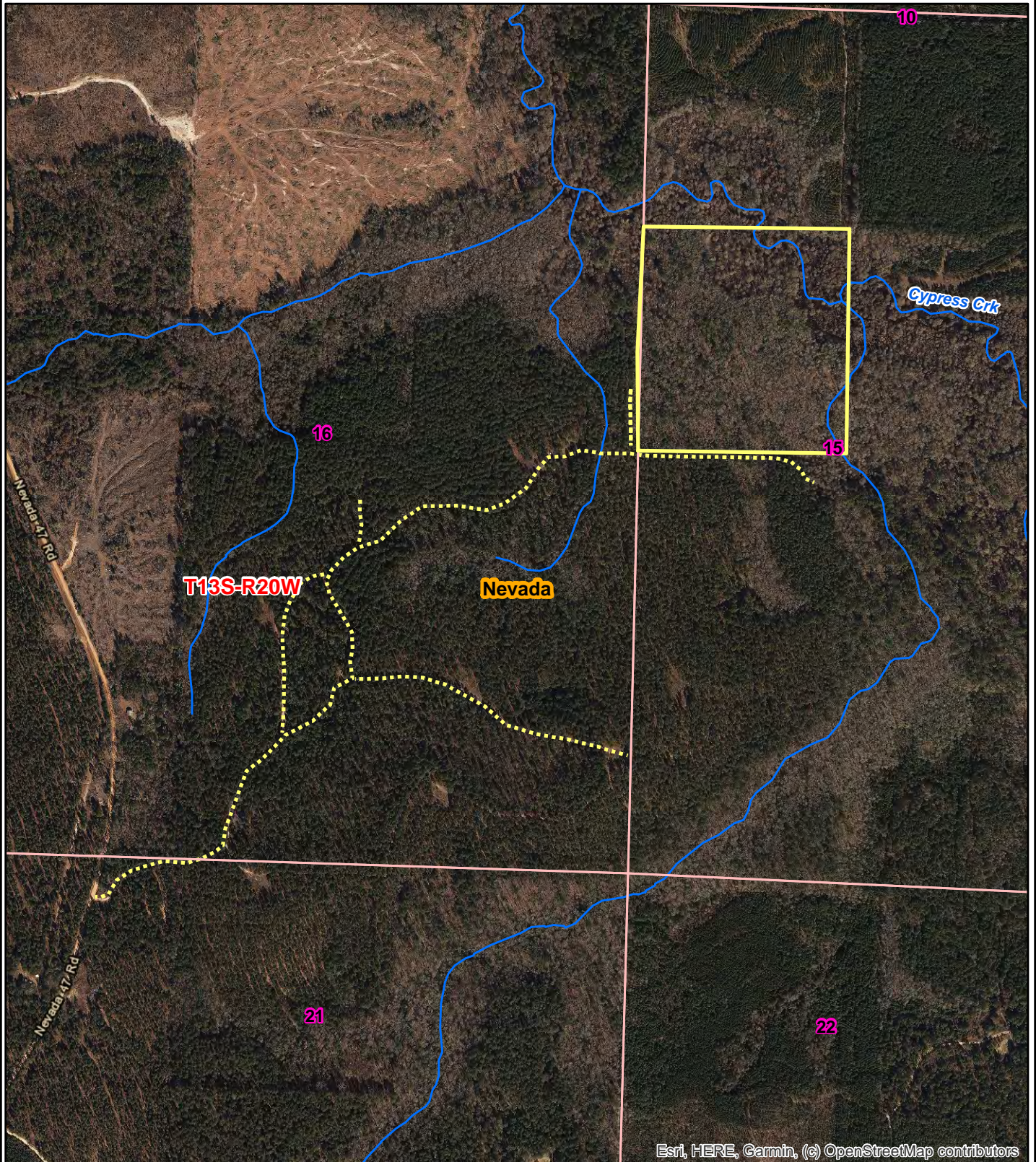
### **Misc. Hardwood**

| Product             | Stratum Total |              |                |             | Per Acre  |             |                |             | Average Tree |  |
|---------------------|---------------|--------------|----------------|-------------|-----------|-------------|----------------|-------------|--------------|--|
|                     | Trees         | Tons         | Doyle BF       | B.A         | Trees     | Tons        | Doyle BF       | DBH         | Height       |  |
| Sawtimber           | 53            | 60           | 7,134          | 5.3         | 3         | 3.8         | 445.9          | 17.0        | 32.5         |  |
| Pulpwood            | 213           | 129          | 0              | 11.0        | 13        | 8.1         | 0.0            | 11.6        | 34.6         |  |
| <b>Class Total</b>  | <b>267</b>    | <b>189</b>   | <b>7,134</b>   | <b>16.3</b> | <b>17</b> | <b>11.8</b> | <b>445.9</b>   | <b>12.7</b> | <b>34.2</b>  |  |
| <b>StratumTotal</b> | <b>1,365</b>  | <b>1,342</b> | <b>122,317</b> | <b>96.8</b> | <b>85</b> | <b>83.9</b> | <b>7,644.8</b> | <b>13.7</b> | <b>39.3</b>  |  |

ADDITIONAL MAPS & VOLUME ESTIMATE REPORTS  
TOMPKINS 40 TRACT



**NOTICE OF LAND SALE**  
**"Tompkins 40" - Listing #4659**  
**SW¼ of NW¼, Sec. 15, T13S, R20W, Nevada County, Arkansas**  
**Containing 40 acres, more or less**



Esri, HERE, Garmin, (c) OpenStreetMap contributors

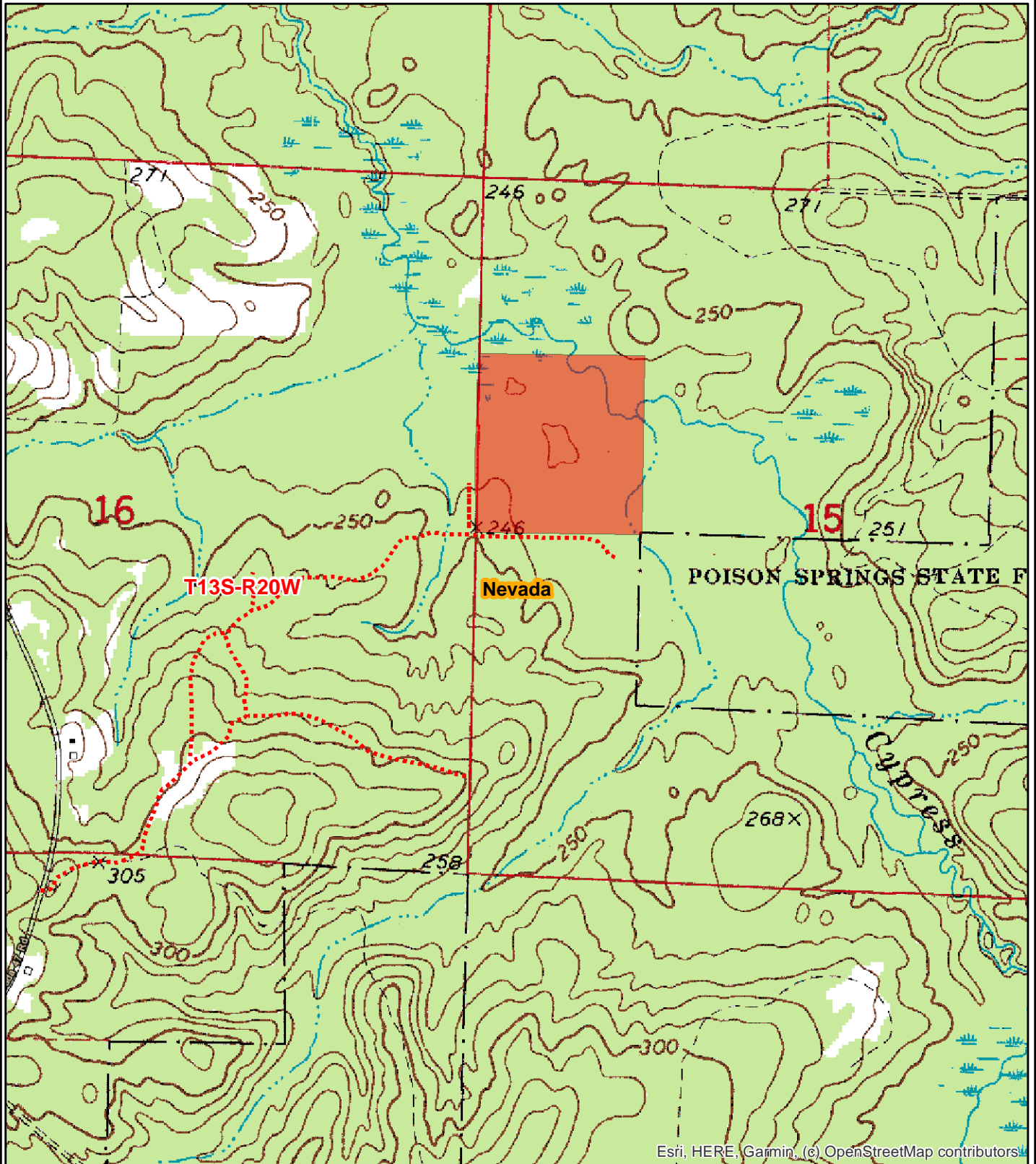
0 0.125 0.25  
Miles



Date: 8/8/2019  
ESRI Aerial Photography  
Drawn By: JDT



**NOTICE OF LAND SALE**  
**"Tompkins 40" - Listing #4659**  
**SW¼ of NW¼, Sec. 15, T13S, R20W, Nevada County, Arkansas**  
**Containing 40 acres, more or less**



0 0.125 0.25 0.5  
Miles



**Date: 8/8/2019**  
**Drawn By: JDT**



**Kingwood Forestry Services**  
**No. 4 Executive Circle**  
**Arkadelphia, AR 71923**

**Phone: 870-246-5757**  
**Fax: 870-246-3341**  
**Email: arkadelphia@kingwoodforestry.com**  
**Website: www.kingwoodforestry.com**

## ***Tompkins 40 - Timber Volume Estimates***

**Stratum:** Merch PH

**Acres:** 29

**Plots:** 27

**Cruiser:** JDT

PAGE 1 OF 2

**Cruise Date:** 08/06/2018

**Cruise Type:** Point

**Plot Size/BAF:** 15.00

### **Pine**

|                    | <i>Stratum Total</i> |             |                 | <i>Per Acre</i> |              |             |                 | <i>Average Tree</i> |               |
|--------------------|----------------------|-------------|-----------------|-----------------|--------------|-------------|-----------------|---------------------|---------------|
| <i>Product</i>     | <i>Trees</i>         | <i>Tons</i> | <i>Doyle BF</i> | <i>BA</i>       | <i>Trees</i> | <i>Tons</i> | <i>Doyle BF</i> | <i>DBH</i>          | <i>Height</i> |
| Natural Lob        |                      |             |                 |                 |              |             |                 |                     |               |
| Sawtimber          | 159                  | 298         | 46,770          | 11.1            | 5            | 10.3        | 1,612.8         | 18.9                | 47.8          |
| Pulpwood           | 349                  | 78          | 0               | 3.3             | 12           | 2.7         | 0.0             | 6.8                 | 36.2          |
| Topwood            | 0                    | 41          | 0               | 0.0             | 0            | 1.4         | 0.0             | 0.0                 | 0.0           |
| <i>Group Total</i> | 507                  | 418         | 46,770          | 14.4            | 17           | 14.4        | 1,612.8         | 10.6                | 39.8          |

### **Shortleaf Pine**

|                    |            |            |               |             |           |             |                |             |             |
|--------------------|------------|------------|---------------|-------------|-----------|-------------|----------------|-------------|-------------|
| Sawtimber          | 8          | 21         | 2,774         | 0.6         | 0         | 0.7         | 95.6           | 19.0        | 72.5        |
| Topwood            | 0          | 1          | 0             | 0.0         | 0         | 0.0         | 0.0            | 0.0         | 0.0         |
| <b>Group Total</b> | <b>8</b>   | <b>22</b>  | <b>2,774</b>  | <b>0.6</b>  | <b>0</b>  | <b>0.7</b>  | <b>95.6</b>    | <b>19.0</b> | <b>72.5</b> |
| <b>Class Total</b> | <b>515</b> | <b>440</b> | <b>49,544</b> | <b>15.0</b> | <b>18</b> | <b>15.2</b> | <b>1,708.4</b> | <b>10.7</b> | <b>40.4</b> |

### **Oak**

|              | Stratum Total |      |          | Per Acre |       |      |          | Average Tree |        |
|--------------|---------------|------|----------|----------|-------|------|----------|--------------|--------|
| Product      | Trees         | Tons | Doyle BF | BA       | Trees | Tons | Doyle BF | DBH          | Height |
| Red Oak Spp. |               |      |          |          |       |      |          |              |        |
| Sawtimber    | 291           | 317  | 37,331   | 16.7     | 10    | 10.9 | 1,287.3  | 17.2         | 26.8   |
| Pulpwood     | 969           | 598  | 0        | 23.3     | 33    | 20.6 | 0.0      | 11.0         | 39.2   |
| Group Total  | 1,260         | 915  | 37,331   | 40.0     | 43    | 31.6 | 1,287.3  | 12.4         | 36.4   |

### **White Oak Spp.**

|                    |              |              |               |             |           |             |                |             |             |
|--------------------|--------------|--------------|---------------|-------------|-----------|-------------|----------------|-------------|-------------|
| Sawtimber          | 158          | 155          | 18,428        | 8.9         | 5         | 5.4         | 635.5          | 17.0        | 23.8        |
| Pulpwood           | 799          | 339          | 0             | 14.4        | 28        | 11.7        | 0.0            | 9.6         | 35.2        |
| <b>Group Total</b> | <b>957</b>   | <b>494</b>   | <b>18,428</b> | <b>23.3</b> | <b>33</b> | <b>17.0</b> | <b>635.5</b>   | <b>10.8</b> | <b>33.3</b> |
| <b>Class Total</b> | <b>2,217</b> | <b>1,409</b> | <b>55,760</b> | <b>63.3</b> | <b>76</b> | <b>48.6</b> | <b>1,922.7</b> | <b>11.7</b> | <b>35.1</b> |

### **Misc. Hardwood**

|                       | <i>Stratum Total</i> |             |                 | <i>Per Acre</i> |              |             |                 | <i>Average Tree</i> |               |
|-----------------------|----------------------|-------------|-----------------|-----------------|--------------|-------------|-----------------|---------------------|---------------|
| <i>Product</i>        | <i>Trees</i>         | <i>Tons</i> | <i>Doyle BF</i> | <i>BA</i>       | <i>Trees</i> | <i>Tons</i> | <i>Doyle BF</i> | <i>DBH</i>          | <i>Height</i> |
| <b>Misc. Hardwood</b> |                      |             |                 |                 |              |             |                 |                     |               |
| Pulpwood              | 623                  | 151         | 0               | 8.3             | 21           | 5.2         | 0.0             | 8.1                 | 26.8          |
| <i>Group Total</i>    | 623                  | 151         | 0               | 8.3             | 21           | 5.2         | 0.0             | 8.1                 | 26.8          |

### **Sweetgum**

|           |       |     |       |      |    |      |       |      |      |
|-----------|-------|-----|-------|------|----|------|-------|------|------|
| Sawtimber | 34    | 32  | 3,641 | 1.7  | 1  | 1.1  | 125.6 | 16.2 | 30.1 |
| Pulpwood  | 1,317 | 444 | 0     | 18.9 | 45 | 15.3 | 0.0   | 8.4  | 37.4 |

**Monday, August 6, 2018**



# Tompkins 40 - Timber Volume Estimates

**Stratum:** Merch PH

**Acres:** 29

**Plots:** 27

**Cruiser:** JDT

PAGE 2 OF 2

**Cruise Date:** 08/06/2018

**Cruise Type:** Point

**Plot Size/BAF:** 15.00

## Misc. Hardwood

| <i>Product</i>       | <i>Stratum Total</i> |             |                 | <i>Per Acre</i> |              |             |                 | <i>Average Tree</i> |               |
|----------------------|----------------------|-------------|-----------------|-----------------|--------------|-------------|-----------------|---------------------|---------------|
|                      | <i>Trees</i>         | <i>Tons</i> | <i>Doyle BF</i> | <i>BA</i>       | <i>Trees</i> | <i>Tons</i> | <i>Doyle BF</i> | <i>DBH</i>          | <i>Height</i> |
| <i>Group Total</i>   | 1,350                | 477         | 3,641           | 20.6            | 47           | 16.4        | 125.6           | 8.6                 | 37.2          |
| <i>Class Total</i>   | 1,973                | 628         | 3,641           | 28.9            | 68           | 21.6        | 125.6           | 8.4                 | 33.9          |
| <i>Stratum Total</i> | 4,706                | 2,477       | 108,945         | 107.2           | 162          | 85.4        | 3,756.7         | 10.2                | 35.2          |

Monday, August 6, 2018



**Kingwood Forestry Services**  
**No. 4 Executive Circle**  
**Arkadelphia, AR 71923**

**Phone: 870-246-5757**  
**Fax: 870-246-3341**  
**Email: arkadelphia@kingwoodforestry.com**  
**Website: www.kingwoodforestry.com**

## ***Tompkins 40 - Timber Volume Estimates***

**Stratum: Merch PH**

**Acres: 29**

**Plots: 27.00**

**Cruiser: JDT**

**Cruise Date: 08/06/2018**

**Cruise Type: Point**

**Plot Size/BAF: 15.00**

PAGE 1 OF 6

### **Pine**

#### **Natural Lob**

#### ***Stratum Total***

#### ***Per Acre***

#### ***Average Tree***

| Sawtimber       | DBH  | Trees | Tons | Doyle BF | Cu. Ft. IB | BA   | Trees | Tons | Doyle BF | Cu. Ft. IB | SL CFT/Ft | Height |
|-----------------|------|-------|------|----------|------------|------|-------|------|----------|------------|-----------|--------|
|                 | 12   | 21    | 9    | 933      | 272        | 0.6  | 1     | 0.3  | 32.2     | 9.4        | 0.54      | 24.5   |
|                 | 16   | 23    | 26   | 3,353    | 795        | 1.1  | 1     | 0.9  | 115.6    | 27.4       | 0.85      | 40.5   |
|                 | 18   | 9     | 11   | 1,604    | 338        | 0.6  | 0     | 0.4  | 55.3     | 11.7       | 1.14      | 32.5   |
|                 | 19   | 41    | 74   | 11,181   | 2,305      | 2.8  | 1     | 2.6  | 385.5    | 79.5       | 1.12      | 50.1   |
|                 | 20   | 22    | 45   | 7,076    | 1,408      | 1.7  | 1     | 1.6  | 244.0    | 48.6       | 1.24      | 51.2   |
|                 | 21   | 13    | 35   | 5,486    | 1,095      | 1.1  | 0     | 1.2  | 189.2    | 37.8       | 1.27      | 64.5   |
|                 | 22   | 12    | 34   | 5,444    | 1,072      | 1.1  | 0     | 1.2  | 187.7    | 37.0       | 1.36      | 64.5   |
|                 | 24   | 5     | 13   | 2,399    | 405        | 0.6  | 0     | 0.4  | 82.7     | 14.0       | 1.95      | 40.5   |
|                 | 25   | 5     | 17   | 2,963    | 537        | 0.6  | 0     | 0.6  | 102.2    | 18.5       | 1.76      | 64.5   |
|                 | 28   | 4     | 18   | 3,187    | 554        | 0.6  | 0     | 0.6  | 109.9    | 19.1       | 2.03      | 72.5   |
|                 | 29   | 4     | 17   | 3,144    | 531        | 0.6  | 0     | 0.6  | 108.4    | 18.3       | 2.34      | 64.5   |
| Sawtimber Total | 18.9 | 159   | 298  | 46,770   | 9,312      | 11.1 | 5     | 10.3 | 1,612.8  | 321.1      | 1.23      | 47.8   |

| Pulpwood       | DBH | Trees | Tons | Doyle BF | Cu. Ft. IB | BA  | Trees | Tons | Doyle BF | Cu. Ft. IB | SL CFT/Ft | Height |
|----------------|-----|-------|------|----------|------------|-----|-------|------|----------|------------|-----------|--------|
|                | 5   | 118   | 12   | 0        | 303        | 0.6 | 4     | 0.4  | 0.0      | 10.5       | 0.00      | 29.4   |
|                | 6   | 82    | 13   | 0        | 337        | 0.6 | 3     | 0.4  | 0.0      | 11.6       | 0.00      | 34.6   |
|                | 7   | 60    | 13   | 0        | 360        | 0.6 | 2     | 0.5  | 0.0      | 12.4       | 0.00      | 39.9   |
|                | 8   | 46    | 13   | 0        | 357        | 0.6 | 2     | 0.4  | 0.0      | 12.3       | 0.00      | 39.9   |
|                | 11  | 24    | 14   | 0        | 410        | 0.6 | 1     | 0.5  | 0.0      | 14.2       | 0.00      | 50.4   |
|                | 13  | 17    | 13   | 0        | 385        | 0.6 | 1     | 0.5  | 0.0      | 13.3       | 0.00      | 47.7   |
| Pulpwood Total | 6.8 | 349   | 78   | 0        | 2,153      | 3.3 | 12    | 2.7  | 0.0      | 74.2       | 0.00      | 36.2   |

| Topwood | DBH | Trees | Tons | Doyle BF | Cu. Ft. IB | BA | Trees | Tons | Doyle BF | Cu. Ft. IB | SL CFT/Ft | Height |
|---------|-----|-------|------|----------|------------|----|-------|------|----------|------------|-----------|--------|
|---------|-----|-------|------|----------|------------|----|-------|------|----------|------------|-----------|--------|

**Monday, August 6, 2018**



# Tompkins 40 - Timber Volume Estimates

**Stratum:** Merch PH

**Acres:** 29

**Plots:** 27.00

**Cruiser:** JDT

**Cruise Date:** 08/06/2018

**Cruise Type:** Point

**Plot Size/BAF:** 15.00

PAGE 2 OF 6

## Pine

### Natural Lob

#### Stratum Total

#### Per Acre

#### Average Tree

|                   |      |     |     |        |        |      |    |      |         |       |      |      |
|-------------------|------|-----|-----|--------|--------|------|----|------|---------|-------|------|------|
| Topwood Total     | 0.0  | 0   | 41  | 0      | 1,338  | 0.0  | 0  | 1.4  | 0.0     | 46.1  | 0.00 | 0.0  |
| Natural Lob Total | 10.6 | 507 | 418 | 46,770 | 12,803 | 14.4 | 17 | 14.4 | 1,612.8 | 441.5 | 1.23 | 39.8 |

### Shortleaf Pine

#### Stratum Total

#### Per Acre

#### Average Tree

| Sawtimber            | DBH  | Trees | Tons | Doyle BF | Cu. Ft. IB | BA   | Trees | Tons | Doyle BF | Cu. Ft. IB | SL CFT/Ft | Height |
|----------------------|------|-------|------|----------|------------|------|-------|------|----------|------------|-----------|--------|
|                      | 19   | 8     | 21   | 2,774    | 598        | 0.6  | 0     | 0.7  | 95.6     | 20.6       | 1.01      | 72.5   |
| Sawtimber Total      | 19.0 | 8     | 21   | 2,774    | 598        | 0.6  | 0     | 0.7  | 95.6     | 20.6       | 1.01      | 72.5   |
| Topwood              | DBH  | Trees | Tons | Doyle BF | Cu. Ft. IB | BA   | Trees | Tons | Doyle BF | Cu. Ft. IB | SL CFT/Ft | Height |
| Topwood Total        | 0.0  | 0     | 1    | 0        | 28         | 0.0  | 0     | 0.0  | 0.0      | 1.0        | 0.00      | 0.0    |
| Shortleaf Pine Total | 19.0 | 8     | 22   | 2,774    | 626        | 0.6  | 0     | 0.7  | 95.6     | 21.6       | 1.01      | 72.5   |
| Pine Total           | 10.7 | 515   | 440  | 49,544   | 13,429     | 15.0 | 18    | 15.2 | 1,708.4  | 463.1      | 1.21      | 40.4   |

## Oak

### Red Oak Spp.

#### Stratum Total

#### Per Acre

#### Average Tree

| Sawtimber | DBH | Trees | Tons | Doyle BF | Cu. Ft. IB | BA  | Trees | Tons | Doyle BF | Cu. Ft. IB | SL CFT/Ft | Height |
|-----------|-----|-------|------|----------|------------|-----|-------|------|----------|------------|-----------|--------|
|           | 14  | 45    | 32   | 2,801    | 842        | 1.7 | 2     | 1.1  | 96.6     | 29.0       | 0.69      | 27.2   |
|           | 15  | 66    | 45   | 4,466    | 1,186      | 2.8 | 2     | 1.5  | 154.0    | 40.9       | 0.85      | 21.3   |
|           | 16  | 23    | 22   | 2,321    | 584        | 1.1 | 1     | 0.8  | 80.0     | 20.1       | 0.89      | 28.5   |
|           | 17  | 31    | 29   | 3,313    | 784        | 1.7 | 1     | 1.0  | 114.3    | 27.0       | 1.04      | 24.5   |
|           | 18  | 55    | 70   | 8,255    | 1,866      | 3.3 | 2     | 2.4  | 284.6    | 64.4       | 1.09      | 31.2   |
|           | 19  | 16    | 26   | 3,272    | 702        | 1.1 | 1     | 0.9  | 112.8    | 24.2       | 1.17      | 36.5   |
|           | 20  | 15    | 24   | 3,153    | 642        | 1.1 | 1     | 0.8  | 108.7    | 22.1       | 1.34      | 32.5   |
|           | 21  | 20    | 29   | 3,954    | 784        | 1.7 | 1     | 1.0  | 136.4    | 27.0       | 1.59      | 24.5   |
|           | 23  | 11    | 17   | 2,461    | 461        | 1.1 | 0     | 0.6  | 84.9     | 15.9       | 2.01      | 20.5   |

Monday, August 6, 2018

# Tompkins 40 - Timber Volume Estimates

**Stratum:** Merch PH

**Acres:** 29

**Plots:** 27.00

**Cruiser:** JDT

**Cruise Date:** 08/06/2018

**Cruise Type:** Point

**Plot Size/BAF:** 15.00

PAGE 3 OF 6

## Oak

### Red Oak Spp.

| Red Oak Spp.       |      | Stratum Total |      |          |            |      | Per Acre |      |          | Average Tree |           |        |
|--------------------|------|---------------|------|----------|------------|------|----------|------|----------|--------------|-----------|--------|
| Sawtimber          | DBH  | Trees         | Tons | Doyle BF | Cu. Ft. IB | BA   | Trees    | Tons | Doyle BF | Cu. Ft. IB   | SL CFT/Ft | Height |
|                    | 25   | 9             | 22   | 3,336    | 585        | 1.1  | 0        | 0.8  | 115.0    | 20.2         | 2.17      | 28.5   |
| Sawtimber Total    | 17.2 | 291           | 317  | 37,331   | 8,436      | 16.7 | 10       | 10.9 | 1,287.3  | 290.9        | 1.08      | 26.8   |
| Pulpwood           | DBH  | Trees         | Tons | Doyle BF | Cu. Ft. IB | BA   | Trees    | Tons | Doyle BF | Cu. Ft. IB   | SL CFT/Ft | Height |
|                    | 6    | 82            | 8    | 0        | 219        | 0.6  | 3        | 0.3  | 0.0      | 7.6          | 0.00      | 18.9   |
|                    | 7    | 60            | 8    | 0        | 219        | 0.6  | 2        | 0.3  | 0.0      | 7.5          | 0.00      | 18.9   |
|                    | 8    | 46            | 8    | 0        | 219        | 0.6  | 2        | 0.3  | 0.0      | 7.5          | 0.00      | 18.9   |
|                    | 9    | 36            | 13   | 0        | 334        | 0.6  | 1        | 0.4  | 0.0      | 11.5         | 0.00      | 34.6   |
|                    | 10   | 118           | 58   | 0        | 1,545      | 2.2  | 4        | 2.0  | 0.0      | 53.3         | 0.00      | 43.8   |
|                    | 11   | 220           | 128  | 0        | 3,414      | 5.0  | 8        | 4.4  | 0.0      | 117.7        | 0.00      | 42.8   |
|                    | 12   | 144           | 105  | 0        | 2,809      | 3.9  | 5        | 3.6  | 0.0      | 96.9         | 0.00      | 45.5   |
|                    | 13   | 140           | 129  | 0        | 3,444      | 4.4  | 5        | 4.5  | 0.0      | 118.8        | 0.00      | 50.4   |
|                    | 14   | 60            | 59   | 0        | 1,575      | 2.2  | 2        | 2.0  | 0.0      | 54.3         | 0.00      | 43.8   |
|                    | 15   | 13            | 13   | 0        | 353        | 0.6  | 0        | 0.5  | 0.0      | 12.2         | 0.00      | 37.2   |
|                    | 16   | 23            | 29   | 0        | 775        | 1.1  | 1        | 1.0  | 0.0      | 26.7         | 0.00      | 42.5   |
|                    | 17   | 10            | 13   | 0        | 336        | 0.6  | 0        | 0.4  | 0.0      | 11.6         | 0.00      | 34.6   |
|                    | 19   | 8             | 13   | 0        | 336        | 0.6  | 0        | 0.4  | 0.0      | 11.6         | 0.00      | 34.6   |
|                    | 20   | 7             | 13   | 0        | 355        | 0.6  | 0        | 0.5  | 0.0      | 12.3         | 0.00      | 37.2   |
| Pulpwood Total     | 11.0 | 969           | 598  | 0        | 15,933     | 23.3 | 33       | 20.6 | 0.0      | 549.4        | 0.00      | 39.2   |
| Red Oak Spp. Total | 12.4 | 1,260         | 915  | 37,331   | 24,369     | 40.0 | 43       | 31.6 | 1,287.3  | 840.3        | 1.08      | 36.4   |

### White Oak Spp.

| White Oak Spp. |     | Stratum Total |      |          |            | Per Acre |       |      |          | Average Tree |           |        |
|----------------|-----|---------------|------|----------|------------|----------|-------|------|----------|--------------|-----------|--------|
| Sawtimber      | DBH | Trees         | Tons | Doyle BF | Cu. Ft. IB | BA       | Trees | Tons | Doyle BF | Cu. Ft. IB   | SL CFT/Ft | Height |
|                | 14  | 15            | 10   | 919      | 263        | 0.6      | 1     | 0.3  | 31.7     | 9.1          | 0.71      | 24.5   |
|                | 15  | 66            | 49   | 4,889    | 1,309      | 2.8      | 2     | 1.7  | 168.6    | 45.2         | 0.81      | 24.5   |
|                | 16  | 35            | 27   | 2,928    | 725        | 1.7      | 1     | 0.9  | 101.0    | 25.0         | 0.96      | 21.8   |
|                | 19  | 8             | 7    | 914      | 199        | 0.6      | 0     | 0.3  | 31.5     | 6.9          | 1.47      | 16.5   |
|                | 21  | 13            | 20   | 2,691    | 525        | 1.1      | 0     | 0.7  | 92.8     | 18.1         | 1.60      | 24.5   |

Monday, August 6, 2018



# Tompkins 40 - Timber Volume Estimates

**Stratum:** Merch PH

**Acres:** 29

**Plots:** 27.00

**Cruiser:** JDT

**Cruise Date:** 08/06/2018

**Cruise Type:** Point

**Plot Size/BAF:** 15.00

PAGE 4 OF 6

## Oak

### White Oak Spp.

| Stratum Total        |      |       |       |          |            |      | Per Acre |      |          |            | Average Tree |        |
|----------------------|------|-------|-------|----------|------------|------|----------|------|----------|------------|--------------|--------|
| Sawtimber            | DBH  | Trees | Tons  | Doyle BF | Cu. Ft. IB | BA   | Trees    | Tons | Doyle BF | Cu. Ft. IB | SL CFT/Ft    | Height |
|                      | 22   | 6     | 10    | 1,388    | 263        | 0.6  | 0        | 0.3  | 47.9     | 9.1        | 1.76         | 24.5   |
|                      | 23   | 6     | 12    | 1,740    | 322        | 0.6  | 0        | 0.4  | 60.0     | 11.1       | 1.78         | 32.5   |
|                      | 24   | 5     | 10    | 1,460    | 262        | 0.6  | 0        | 0.3  | 50.3     | 9.0        | 2.09         | 24.5   |
|                      | 25   | 5     | 10    | 1,499    | 263        | 0.6  | 0        | 0.3  | 51.7     | 9.1        | 2.27         | 24.5   |
| Sawtimber Total      | 17.0 | 158   | 155   | 18,428   | 4,131      | 8.9  | 5        | 5.4  | 635.5    | 142.5      | 1.10         | 23.8   |
| Pulpwood             | DBH  | Trees | Tons  | Doyle BF | Cu. Ft. IB | BA   | Trees    | Tons | Doyle BF | Cu. Ft. IB | SL CFT/Ft    | Height |
|                      | 6    | 82    | 10    | 0        | 271        | 0.6  | 3        | 0.4  | 0.0      | 9.3        | 0.00         | 25.5   |
|                      | 7    | 60    | 11    | 0        | 285        | 0.6  | 2        | 0.4  | 0.0      | 9.8        | 0.00         | 27.5   |
|                      | 8    | 138   | 33    | 0        | 890        | 1.7  | 5        | 1.2  | 0.0      | 30.7       | 0.00         | 29.5   |
|                      | 9    | 73    | 27    | 0        | 707        | 1.1  | 3        | 0.9  | 0.0      | 24.4       | 0.00         | 38.0   |
|                      | 10   | 148   | 71    | 0        | 1,899      | 2.8  | 5        | 2.5  | 0.0      | 65.5       | 0.00         | 42.5   |
|                      | 11   | 195   | 99    | 0        | 2,643      | 4.4  | 7        | 3.4  | 0.0      | 91.1       | 0.00         | 34.6   |
|                      | 12   | 62    | 43    | 0        | 1,142      | 1.7  | 2        | 1.5  | 0.0      | 39.4       | 0.00         | 42.2   |
|                      | 13   | 17    | 16    | 0        | 430        | 0.6  | 1        | 0.6  | 0.0      | 14.8       | 0.00         | 50.5   |
|                      | 14   | 15    | 16    | 0        | 432        | 0.6  | 1        | 0.6  | 0.0      | 14.9       | 0.00         | 50.5   |
|                      | 19   | 8     | 12    | 0        | 328        | 0.6  | 0        | 0.4  | 0.0      | 11.3       | 0.00         | 33.5   |
| Pulpwood Total       | 9.6  | 799   | 339   | 0        | 9,027      | 14.4 | 28       | 11.7 | 0.0      | 311.3      | 0.00         | 35.2   |
| White Oak Spp. Total | 10.8 | 957   | 494   | 18,428   | 13,158     | 23.3 | 33       | 17.0 | 635.5    | 453.7      | 1.10         | 33.3   |
| Oak Total            | 11.7 | 2,217 | 1,409 | 55,760   | 37,527     | 63.3 | 76       | 48.6 | 1,922.7  | 1,294.0    | 1.09         | 35.1   |

## Misc. Hardwood

### Misc. Hardwood

| Stratum Total |     |       |      |          |            |     | Per Acre |      |          |            | Average Tree |        |
|---------------|-----|-------|------|----------|------------|-----|----------|------|----------|------------|--------------|--------|
| Pulpwood      | DBH | Trees | Tons | Doyle BF | Cu. Ft. IB | BA  | Trees    | Tons | Doyle BF | Cu. Ft. IB | SL CFT/Ft    | Height |
|               | 6   | 164   | 17   | 0        | 502        | 1.1 | 6        | 0.6  | 0.0      | 17.3       | 0.00         | 22.8   |

Monday, August 6, 2018

# Tompkins 40 - Timber Volume Estimates

**Stratum:** Merch PH

**Acres:** 29

**Plots:** 27.00

**Cruiser:** JDT

**Cruise Date:** 08/06/2018

**Cruise Type:** Point

**Plot Size/BAF:** 15.00

PAGE 5 OF 6

## Misc. Hardwood

| Misc. Hardwood       |     | Stratum Total |      |          |            |     | Per Acre |      |          |            |           | Average Tree |  |
|----------------------|-----|---------------|------|----------|------------|-----|----------|------|----------|------------|-----------|--------------|--|
| Pulpwood             | DBH | Trees         | Tons | Doyle BF | Cu. Ft. IB | BA  | Trees    | Tons | Doyle BF | Cu. Ft. IB | SL CFT/Ft | Height       |  |
|                      | 7   | 181           | 26   | 0        | 761        | 1.7 | 6        | 0.9  | 0.0      | 26.3       | 0.00      | 23.3         |  |
|                      | 8   | 92            | 17   | 0        | 521        | 1.1 | 3        | 0.6  | 0.0      | 18.0       | 0.00      | 24.1         |  |
|                      | 10  | 89            | 33   | 0        | 973        | 1.7 | 3        | 1.1  | 0.0      | 33.6       | 0.00      | 33.8         |  |
|                      | 11  | 24            | 7    | 0        | 218        | 0.6 | 1        | 0.3  | 0.0      | 7.5        | 0.00      | 18.9         |  |
|                      | 12  | 21            | 9    | 0        | 260        | 0.6 | 1        | 0.3  | 0.0      | 9.0        | 0.00      | 24.1         |  |
|                      | 13  | 52            | 43   | 0        | 1,272      | 1.7 | 2        | 1.5  | 0.0      | 43.9       | 0.00      | 49.5         |  |
| Pulpwood Total       | 8.1 | 623           | 151  | 0        | 4,507      | 8.3 | 21       | 5.2  | 0.0      | 155.4      | 0.00      | 26.8         |  |
|                      |     |               |      |          |            |     |          |      |          |            |           |              |  |
| Misc. Hardwood Total | 8.1 | 623           | 151  | 0        | 4,507      | 8.3 | 21       | 5.2  | 0.0      | 155.4      | 0.00      | 26.8         |  |

| Sweetgum        |      | Stratum Total |      |          |            |     | Per Acre |      |          |            |           | Average Tree |  |
|-----------------|------|---------------|------|----------|------------|-----|----------|------|----------|------------|-----------|--------------|--|
| Sawtimber       | DBH  | Trees         | Tons | Doyle BF | Cu. Ft. IB | BA  | Trees    | Tons | Doyle BF | Cu. Ft. IB | SL CFT/Ft | Height       |  |
|                 | 15   | 13            | 12   | 1,162    | 322        | 0.6 | 0        | 0.4  | 40.1     | 11.1       | 0.75      | 32.5         |  |
|                 | 17   | 20            | 21   | 2,479    | 585        | 1.1 | 1        | 0.7  | 85.5     | 20.2       | 1.00      | 28.5         |  |
| Sawtimber Total | 16.2 | 34            | 32   | 3,641    | 907        | 1.7 | 1        | 1.1  | 125.6    | 31.3       | 0.90      | 30.1         |  |

| Pulpwood       | DBH | Trees | Tons | Doyle BF | Cu. Ft. IB | BA   | Trees | Tons | Doyle BF | Cu. Ft. IB | SL CFT/Ft | Height |
|----------------|-----|-------|------|----------|------------|------|-------|------|----------|------------|-----------|--------|
|                | 6   | 328   | 37   | 0        | 1,082      | 2.2  | 11    | 1.3  | 0.0      | 37.3       | 0.00      | 25.4   |
|                | 7   | 362   | 59   | 0        | 1,729      | 3.3  | 12    | 2.0  | 0.0      | 59.6       | 0.00      | 28.5   |
|                | 8   | 138   | 34   | 0        | 1,002      | 1.7  | 5     | 1.2  | 0.0      | 34.6       | 0.00      | 35.5   |
|                | 9   | 36    | 13   | 0        | 394        | 0.6  | 1     | 0.5  | 0.0      | 13.6       | 0.00      | 45.1   |
|                | 10  | 148   | 76   | 0        | 2,233      | 2.8  | 5     | 2.6  | 0.0      | 77.0       | 0.00      | 55.1   |
|                | 11  | 171   | 101  | 0        | 2,970      | 3.9  | 6     | 3.5  | 0.0      | 102.4      | 0.00      | 50.0   |
|                | 12  | 41    | 31   | 0        | 898        | 1.1  | 1     | 1.1  | 0.0      | 31.0       | 0.00      | 54.3   |
|                | 13  | 70    | 63   | 0        | 1,844      | 2.2  | 2     | 2.2  | 0.0      | 63.6       | 0.00      | 56.3   |
|                | 15  | 13    | 17   | 0        | 504        | 0.6  | 0     | 0.6  | 0.0      | 17.4       | 0.00      | 63.5   |
|                | 18  | 9     | 13   | 0        | 372        | 0.6  | 0     | 0.4  | 0.0      | 12.8       | 0.00      | 39.9   |
| Pulpwood Total | 8.4 | 1,317 | 444  | 0        | 13,027     | 18.9 | 45    | 15.3 | 0.0      | 449.2      | 0.00      | 37.4   |

Monday, August 6, 2018

# Tompkins 40 - Timber Volume Estimates

**Stratum:** Merch PH

**Acres:** 29

**Plots:** 27.00

**Cruiser:** JDT

**Cruise Date:** 08/06/2018

**Cruise Type:** Point

**Plot Size/BAF:** 15.00

PAGE 6 OF 6

## Misc. Hardwood

|                      |      |       |       |         |        |       |     |      |         |         |      |      |
|----------------------|------|-------|-------|---------|--------|-------|-----|------|---------|---------|------|------|
| Sweetgum Total       | 8.6  | 1,350 | 477   | 3,641   | 13,934 | 20.6  | 47  | 16.4 | 125.6   | 480.5   | 0.90 | 37.2 |
|                      |      |       |       |         |        |       |     |      |         |         |      |      |
| Misc. Hardwood Total | 8.4  | 1,973 | 628   | 3,641   | 18,441 | 28.9  | 68  | 21.6 | 125.6   | 635.9   | 0.90 | 33.9 |
|                      |      |       |       |         |        |       |     |      |         |         |      |      |
| <b>Stratum Total</b> | 10.2 | 4,706 | 2,477 | 108,945 | 69,398 | 107.2 | 162 | 85.4 | 3,756.7 | 2,393.0 | 1.13 | 35.2 |

Monday, August 6, 2018



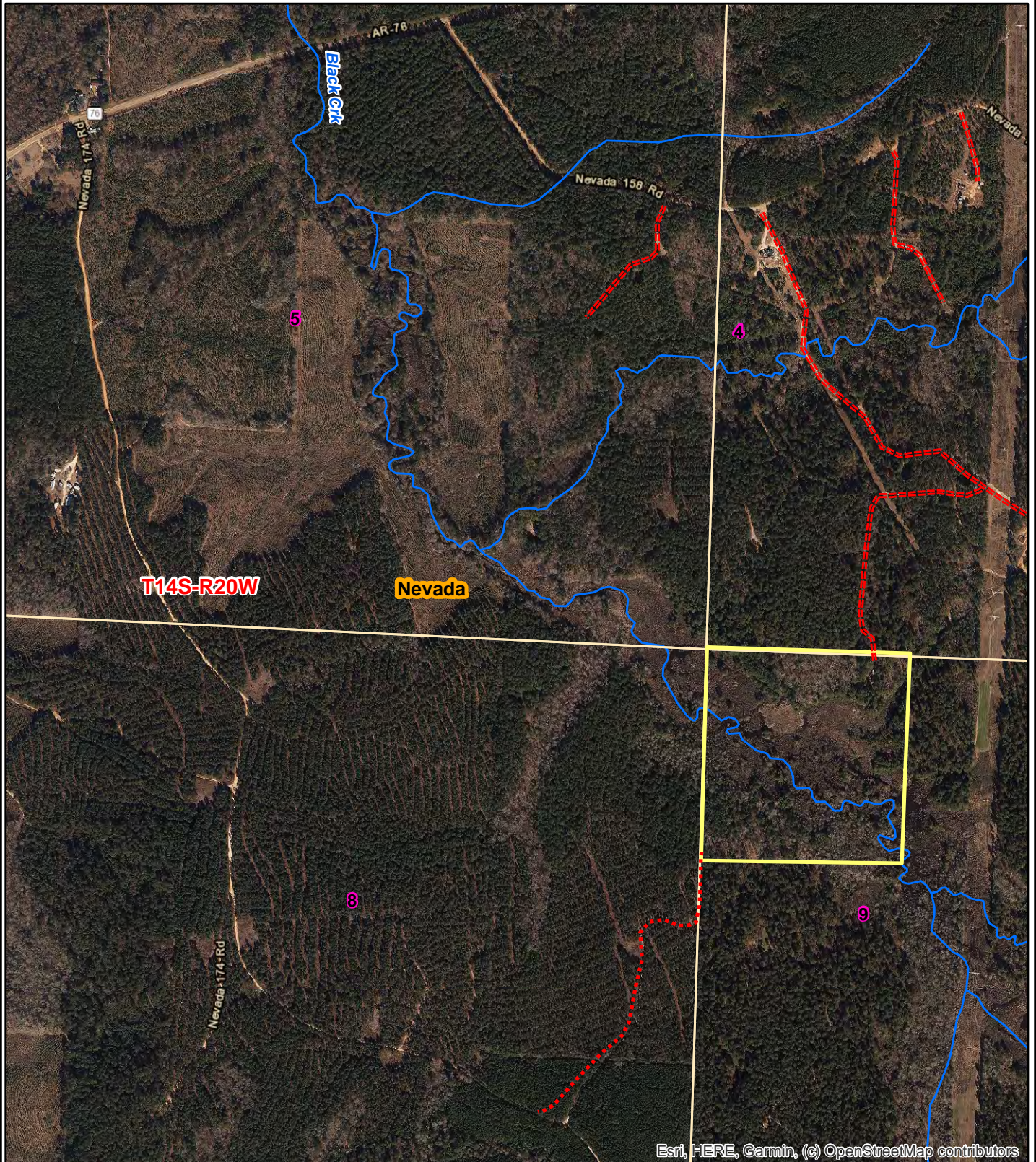
ADDITIONAL MAPS & VOLUME ESTIMATE REPORTS  
BLACK CREEK 40 TRACT



**NOTICE OF LAND SALE - Listing #4658**

**"Black Creek 40 Tract"**

**NW<sup>1</sup>/<sub>4</sub> of NW<sup>1</sup>/<sub>4</sub>, Sec. 9, T14S, R20W, Nevada County, Arkansas  
containing 40 acres, more or less**



Esri, HERE, Garmin, (c) OpenStreetMap contributors

0 0.125 0.25  
Miles



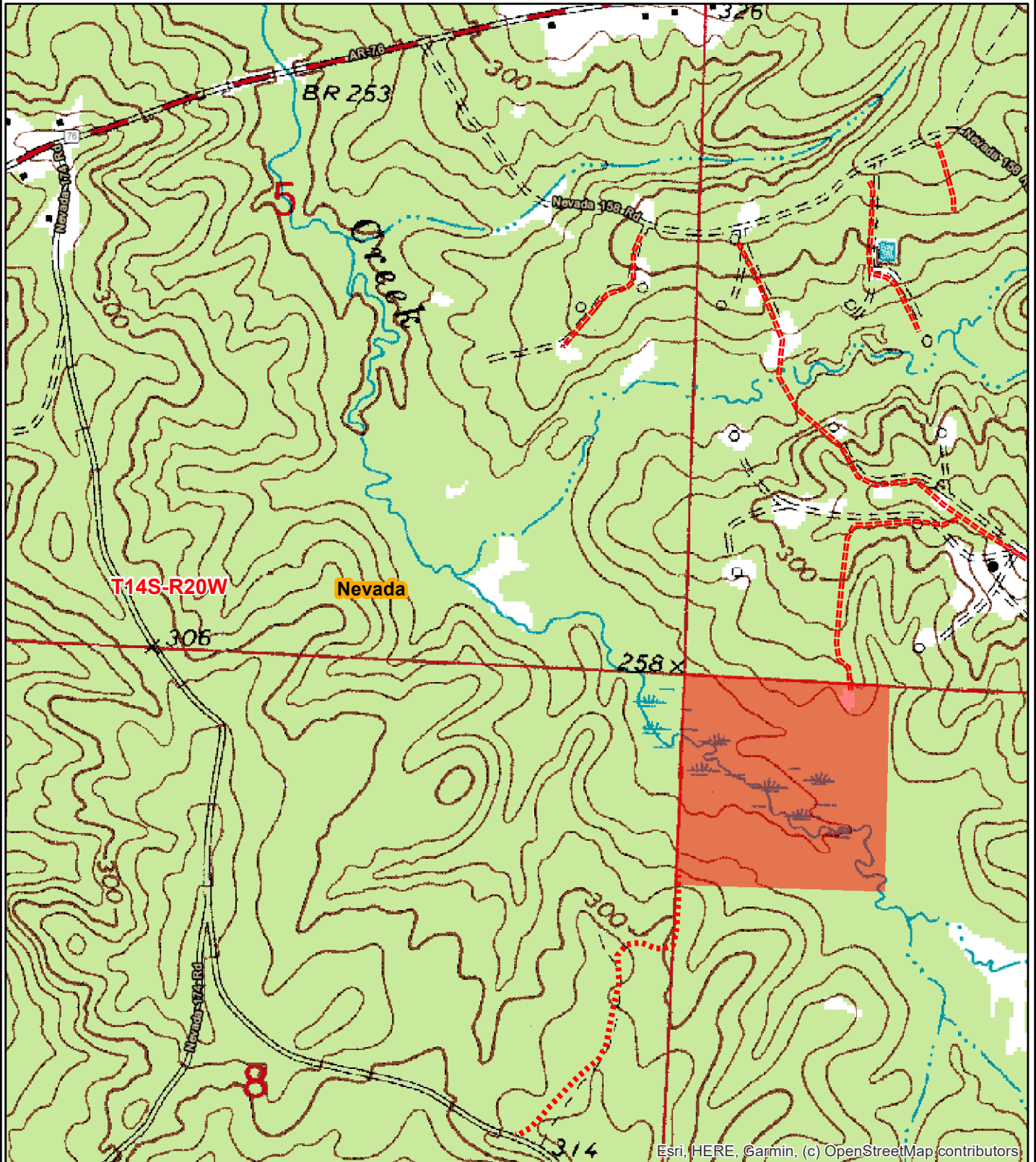
Date: 8/6/2019  
ESRI Aerial Photography  
Drawn By: JDT



**NOTICE OF LAND SALE - Listing #4658**

**"Black Creek 40 Tract"**

**NW¼ of NW¼, Sec. 9, T14S, R20W, Nevada County, Arkansas  
containing 40 acres, more or less**



Esri, HERE, Garmin, (c) OpenStreetMap contributors

0 0.125 0.25  
Miles



Date: 8/6/2019  
Drawn By: JDT





**Kingwood Forestry Services**  
**No. 4 Executive Circle**  
**Arkadelphia, AR 71923**

**Phone: 870-246-5757**  
**Fax: 870-246-3341**  
**Email: arkadelphia@kingwoodforestry.com**  
**Website: www.kingwoodforestry.com**

## ***Timber Volume Estimates - Black Creek 40***

**Stratum:** Merchantable PH\_16 ac

**Acres:** 16

**Plots:** 15

**Cruiser:** JDT

**Cruise Date:** 08/13/2019

**Cruise Type:** Plot

**Plot Size/BAF:** 0.10

PAGE 1 OF 2

### **Pine**

| <i><b>Product</b></i> | <i><b>Stratum Total</b></i> |                    |                        | <i><b>Per Acre</b></i> |                     |                    |                        | <i><b>Average Tree</b></i> |                      |
|-----------------------|-----------------------------|--------------------|------------------------|------------------------|---------------------|--------------------|------------------------|----------------------------|----------------------|
|                       | <i><b>Trees</b></i>         | <i><b>Tons</b></i> | <i><b>Doyle BF</b></i> | <i><b>BA</b></i>       | <i><b>Trees</b></i> | <i><b>Tons</b></i> | <i><b>Doyle BF</b></i> | <i><b>DBH</b></i>          | <i><b>Height</b></i> |
| <b>Natural Lob</b>    |                             |                    |                        |                        |                     |                    |                        |                            |                      |
| Sawtimber             | 437                         | 596                | 82,236                 | 41.4                   | 27                  | 37.3               | 5,139.8                | 16.4                       | 45.6                 |
| Chip-N-Saw            | 85                          | 39                 | 3,390                  | 3.1                    | 5                   | 2.4                | 211.8                  | 10.4                       | 36.5                 |
| Pulpwood              | 245                         | 98                 | 0                      | 7.0                    | 15                  | 6.1                | 0.0                    | 8.8                        | 44.4                 |
| Topwood               | 0                           | 85                 | 0                      | 0.0                    | 0                   | 5.3                | 0.0                    | 0.0                        | 0.0                  |
| <b>Group Total</b>    | 768                         | 818                | 85,626                 | 51.5                   | 48                  | 51.1               | 5,351.6                | 13.3                       | 44.2                 |
| <b>Class Total</b>    | 768                         | 818                | 85,626                 | 51.5                   | 48                  | 51.1               | 5,351.6                | 13.3                       | 44.2                 |

### **Oak**

| <i><b>Product</b></i> | <i><b>Stratum Total</b></i> |                    |                        | <i><b>Per Acre</b></i> |                     |                    |                        | <i><b>Average Tree</b></i> |                      |
|-----------------------|-----------------------------|--------------------|------------------------|------------------------|---------------------|--------------------|------------------------|----------------------------|----------------------|
|                       | <i><b>Trees</b></i>         | <i><b>Tons</b></i> | <i><b>Doyle BF</b></i> | <i><b>BA</b></i>       | <i><b>Trees</b></i> | <i><b>Tons</b></i> | <i><b>Doyle BF</b></i> | <i><b>DBH</b></i>          | <i><b>Height</b></i> |
| <b>Red Oak Spp.</b>   |                             |                    |                        |                        |                     |                    |                        |                            |                      |
| Sawtimber             | 64                          | 110                | 14,639                 | 9.4                    | 4                   | 6.9                | 915.0                  | 20.7                       | 32.5                 |
| Pulpwood              | 75                          | 51                 | 0                      | 3.7                    | 5                   | 3.2                | 0.0                    | 11.7                       | 38.0                 |
| <b>Group Total</b>    | 139                         | 162                | 14,639                 | 13.1                   | 9                   | 10.1               | 915.0                  | 15.8                       | 35.5                 |
| <b>White Oak Spp.</b> |                             |                    |                        |                        |                     |                    |                        |                            |                      |
| Sawtimber             | 107                         | 125                | 14,918                 | 12.0                   | 7                   | 7.8                | 932.4                  | 17.9                       | 28.5                 |
| Pulpwood              | 85                          | 47                 | 0                      | 3.9                    | 5                   | 3.0                | 0.0                    | 11.3                       | 31.4                 |
| <b>Group Total</b>    | 192                         | 172                | 14,918                 | 15.9                   | 12                  | 10.8               | 932.4                  | 14.9                       | 29.8                 |
| <b>Class Total</b>    | 331                         | 334                | 29,557                 | 29.0                   | 21                  | 20.9               | 1,847.3                | 15.3                       | 32.2                 |

### **Misc. Hardwood**

| <i><b>Product</b></i> | <i><b>Stratum Total</b></i> |                    |                        | <i><b>Per Acre</b></i> |                     |                    |                        | <i><b>Average Tree</b></i> |                      |
|-----------------------|-----------------------------|--------------------|------------------------|------------------------|---------------------|--------------------|------------------------|----------------------------|----------------------|
|                       | <i><b>Trees</b></i>         | <i><b>Tons</b></i> | <i><b>Doyle BF</b></i> | <i><b>BA</b></i>       | <i><b>Trees</b></i> | <i><b>Tons</b></i> | <i><b>Doyle BF</b></i> | <i><b>DBH</b></i>          | <i><b>Height</b></i> |
| <b>Misc. Hardwood</b> |                             |                    |                        |                        |                     |                    |                        |                            |                      |
| Sawtimber             | 21                          | 21                 | 2,263                  | 1.9                    | 1                   | 1.3                | 141.4                  | 16.0                       | 32.5                 |
| Pulpwood              | 128                         | 93                 | 0                      | 8.4                    | 8                   | 5.8                | 0.0                    | 13.5                       | 32.0                 |
| <b>Group Total</b>    | 149                         | 113                | 2,263                  | 10.3                   | 9                   | 7.1                | 141.4                  | 13.9                       | 32.1                 |
| <b>Sweetgum</b>       |                             |                    |                        |                        |                     |                    |                        |                            |                      |
| Sawtimber             | 32                          | 40                 | 4,871                  | 3.5                    | 2                   | 2.5                | 304.4                  | 17.7                       | 32.5                 |
| Pulpwood              | 85                          | 36                 | 0                      | 2.6                    | 5                   | 2.3                | 0.0                    | 8.8                        | 38.6                 |
| <b>Group Total</b>    | 117                         | 76                 | 4,871                  | 6.0                    | 7                   | 4.7                | 304.4                  | 11.2                       | 36.9                 |

## Timber Volume Estimates - Black Creek 40

**Stratum:** Merchantable PH\_16 ac

**Acres:** 16

**Plots:** 15

**Cruiser:** JDT

PAGE 2 OF 2

**Cruise Date:** 08/13/2019

**Cruise Type:** Plot

**Plot Size/BAF:** 0.10

|                      |       |       |         |      |    |      |         |      |      |
|----------------------|-------|-------|---------|------|----|------|---------|------|------|
|                      |       |       |         |      |    |      |         |      |      |
| <b>Class Total</b>   | 267   | 189   | 7,134   | 16.3 | 17 | 11.8 | 445.9   | 12.7 | 34.2 |
|                      |       |       |         |      |    |      |         |      |      |
| <b>Stratum Total</b> | 1,365 | 1,342 | 122,317 | 96.8 | 85 | 83.9 | 7,644.8 | 13.7 | 39.3 |



**Kingwood Forestry Services**  
**No. 4 Executive Circle**  
**Arkadelphia, AR 71923**

**Phone: 870-246-5757**  
**Fax: 870-246-3341**  
**Email: arkadelphia@kingwoodforestry.com**  
**Website: www.kingwoodforestry.com**

## Timber Volume Estimates - Black Creek 40

**Stratum:** Merchantable PH\_16 ac

**Acres:** 16

**Plots:** 15.00

**Cruiser:** JDT

**Cruise Date:** 08/13/2019

**Cruise Type:** Plot

**Plot Size/BAF:** 0.10

PAGE 1 OF 5

### Pine

#### Natural Lob

#### Stratum Total

#### Per Acre

#### Average Tree

| Sawtimber        | DBH  | Trees | Tons | Doyle BF | Cu. Ft. IB | BA   | Trees | Tons | Doyle BF | Cu. Ft. IB | SL CFT/Ft | Height |
|------------------|------|-------|------|----------|------------|------|-------|------|----------|------------|-----------|--------|
|                  | 12   | 53    | 26   | 2,546    | 778        | 2.6  | 3     | 1.6  | 159.1    | 48.6       | 0.53      | 27.7   |
|                  | 13   | 53    | 37   | 3,809    | 1,115      | 3.1  | 3     | 2.3  | 238.1    | 69.7       | 0.59      | 35.7   |
|                  | 14   | 32    | 28   | 3,245    | 859        | 2.1  | 2     | 1.8  | 202.8    | 53.7       | 0.66      | 40.5   |
|                  | 15   | 43    | 41   | 5,074    | 1,254      | 3.3  | 3     | 2.6  | 317.1    | 78.4       | 0.76      | 38.5   |
|                  | 16   | 53    | 68   | 8,576    | 2,102      | 4.7  | 3     | 4.2  | 536.0    | 131.3      | 0.81      | 48.5   |
|                  | 17   | 43    | 63   | 8,363    | 1,970      | 4.2  | 3     | 4.0  | 522.7    | 123.2      | 0.88      | 52.5   |
|                  | 18   | 43    | 67   | 9,380    | 2,097      | 4.7  | 3     | 4.2  | 586.3    | 131.1      | 1.01      | 48.5   |
|                  | 19   | 53    | 97   | 14,429   | 3,031      | 6.6  | 3     | 6.1  | 901.8    | 189.4      | 1.10      | 51.7   |
|                  | 20   | 32    | 73   | 10,856   | 2,269      | 4.4  | 2     | 4.5  | 678.5    | 141.8      | 1.15      | 61.8   |
|                  | 21   | 11    | 25   | 4,045    | 792        | 1.6  | 1     | 1.6  | 252.8    | 49.5       | 1.31      | 56.5   |
|                  | 22   | 11    | 29   | 4,516    | 913        | 1.8  | 1     | 1.8  | 282.3    | 57.1       | 1.33      | 64.5   |
|                  | 26   | 11    | 42   | 7,397    | 1,310      | 2.5  | 1     | 2.6  | 462.3    | 81.9       | 1.90      | 64.5   |
| Sawtimber Total  | 16.4 | 437   | 596  | 82,236   | 18,491     | 41.4 | 27    | 37.3 | 5,139.8  | 1,155.7    | 0.93      | 45.6   |
| Chip-N-Saw       | DBH  | Trees | Tons | Doyle BF | Cu. Ft. IB | BA   | Trees | Tons | Doyle BF | Cu. Ft. IB | SL CFT/Ft | Height |
|                  | 10   | 53    | 24   | 2,103    | 680        | 1.8  | 3     | 1.5  | 131.5    | 42.5       | 0.33      | 38.9   |
|                  | 11   | 32    | 15   | 1,286    | 417        | 1.3  | 2     | 0.9  | 80.4     | 26.0       | 0.40      | 32.5   |
| Chip-N-Saw Total | 10.4 | 85    | 39   | 3,390    | 1,096      | 3.1  | 5     | 2.4  | 211.8    | 68.5       | 0.35      | 36.5   |
| Pulpwood         | DBH  | Trees | Tons | Doyle BF | Cu. Ft. IB | BA   | Trees | Tons | Doyle BF | Cu. Ft. IB | SL CFT/Ft | Height |
|                  | 5    | 11    | 1    | 0        | 30         | 0.1  | 1     | 0.1  | 0.0      | 1.8        | 0.00      | 32.0   |
|                  | 6    | 11    | 2    | 0        | 43         | 0.1  | 1     | 0.1  | 0.0      | 2.7        | 0.00      | 34.6   |
|                  | 7    | 32    | 7    | 0        | 202        | 0.5  | 2     | 0.5  | 0.0      | 12.6       | 0.00      | 42.5   |
|                  | 8    | 85    | 25   | 0        | 695        | 1.9  | 5     | 1.6  | 0.0      | 43.4       | 0.00      | 42.5   |

Tuesday, August 13, 2019



# Timber Volume Estimates - Black Creek 40

**Stratum:** Merchantable PH\_16 ac

**Acres:** 16

**Plots:** 15.00

**Cruiser:** JDT

**Cruise Date:** 08/13/2019

**Cruise Type:** Plot

**Plot Size/BAF:** 0.10

PAGE 2 OF 5

## Pine

### Natural Lob

#### Stratum Total

#### Per Acre

#### Average Tree

| Pulpwood          | DBH  | Trees | Tons | Doyle BF | Cu. Ft. IB | BA   | Trees | Tons | Doyle BF | Cu. Ft. IB | SL CFT/Ft | Height |
|-------------------|------|-------|------|----------|------------|------|-------|------|----------|------------|-----------|--------|
|                   | 9    | 64    | 26   | 0        | 725        | 1.8  | 4     | 1.6  | 0.0      | 45.3       | 0.00      | 49.1   |
|                   | 10   | 11    | 5    | 0        | 130        | 0.4  | 1     | 0.3  | 0.0      | 8.1        | 0.00      | 42.5   |
|                   | 11   | 11    | 6    | 0        | 160        | 0.4  | 1     | 0.4  | 0.0      | 10.0       | 0.00      | 42.5   |
|                   | 13   | 11    | 8    | 0        | 219        | 0.6  | 1     | 0.5  | 0.0      | 13.7       | 0.00      | 42.5   |
|                   | 18   | 11    | 19   | 0        | 569        | 1.2  | 1     | 1.2  | 0.0      | 35.6       | 0.00      | 66.1   |
| Pulpwood Total    | 8.8  | 245   | 98   | 0        | 2,772      | 7.0  | 15    | 6.1  | 0.0      | 173.3      | 0.00      | 44.4   |
| Topwood           | DBH  | Trees | Tons | Doyle BF | Cu. Ft. IB | BA   | Trees | Tons | Doyle BF | Cu. Ft. IB | SL CFT/Ft | Height |
| Topwood Total     | 0.0  | 0     | 85   | 0        | 2,737      | 0.0  | 0     | 5.3  | 0.0      | 171.1      | 0.00      | 0.0    |
| Natural Lob Total | 13.3 | 768   | 818  | 85,626   | 25,096     | 51.5 | 48    | 51.1 | 5,351.6  | 1,568.5    | 0.85      | 44.2   |
| Pine Total        | 13.3 | 768   | 818  | 85,626   | 25,096     | 51.5 | 48    | 51.1 | 5,351.6  | 1,568.5    | 0.85      | 44.2   |

## Oak

### Red Oak Spp.

#### Stratum Total

#### Per Acre

#### Average Tree

| Sawtimber       | DBH  | Trees | Tons | Doyle BF | Cu. Ft. IB | BA  | Trees | Tons | Doyle BF | Cu. Ft. IB | SL CFT/Ft | Height |
|-----------------|------|-------|------|----------|------------|-----|-------|------|----------|------------|-----------|--------|
|                 | 18   | 11    | 19   | 2,123    | 501        | 1.2 | 1     | 1.2  | 132.7    | 31.3       | 0.97      | 48.5   |
|                 | 19   | 11    | 16   | 1,952    | 420        | 1.3 | 1     | 1.0  | 122.0    | 26.2       | 1.21      | 32.5   |
|                 | 20   | 11    | 14   | 1,877    | 380        | 1.5 | 1     | 0.9  | 117.3    | 23.7       | 1.45      | 24.5   |
|                 | 22   | 21    | 38   | 5,364    | 1,021      | 3.5 | 1     | 2.4  | 335.3    | 63.8       | 1.68      | 28.5   |
|                 | 23   | 11    | 23   | 3,324    | 616        | 1.9 | 1     | 1.4  | 207.7    | 38.5       | 1.78      | 32.5   |
| Sawtimber Total | 20.7 | 64    | 110  | 14,639   | 2,937      | 9.4 | 4     | 6.9  | 915.0    | 183.6      | 1.41      | 32.5   |
| Pulpwood        | DBH  | Trees | Tons | Doyle BF | Cu. Ft. IB | BA  | Trees | Tons | Doyle BF | Cu. Ft. IB | SL CFT/Ft | Height |
|                 | 7    | 11    | 2    | 0        | 46         | 0.2 | 1     | 0.1  | 0.0      | 2.9        | 0.00      | 24.1   |
|                 | 10   | 11    | 5    | 0        | 127        | 0.4 | 1     | 0.3  | 0.0      | 7.9        | 0.00      | 37.3   |

Tuesday, August 13, 2019

# Timber Volume Estimates - Black Creek 40

**Stratum:** Merchantable PH\_16 ac

**Acres:** 16

**Plots:** 15.00

**Cruiser:** JDT

**Cruise Date:** 08/13/2019

**Cruise Type:** Plot

**Plot Size/BAF:** 0.10

PAGE 3 OF 5

## Oak

### Red Oak Spp.

#### Stratum Total

#### Per Acre

#### Average Tree

| Pulpwood           | DBH  | Trees | Tons | Doyle BF | Cu. Ft. IB | BA   | Trees | Tons | Doyle BF | Cu. Ft. IB | SL CFT/Ft | Height |
|--------------------|------|-------|------|----------|------------|------|-------|------|----------|------------|-----------|--------|
|                    | 11   | 11    | 6    | 0        | 154        | 0.4  | 1     | 0.4  | 0.0      | 9.6        | 0.00      | 37.3   |
|                    | 12   | 11    | 7    | 0        | 192        | 0.5  | 1     | 0.4  | 0.0      | 12.0       | 0.00      | 39.9   |
|                    | 13   | 21    | 16   | 0        | 431        | 1.2  | 1     | 1.0  | 0.0      | 26.9       | 0.00      | 37.3   |
|                    | 16   | 11    | 16   | 0        | 418        | 0.9  | 1     | 1.0  | 0.0      | 26.2       | 0.00      | 53.0   |
| Pulpwood Total     | 11.7 | 75    | 51   | 0        | 1,367      | 3.7  | 5     | 3.2  | 0.0      | 85.4       | 0.00      | 38.0   |
| Red Oak Spp. Total | 15.8 | 139   | 162  | 14,639   | 4,305      | 13.1 | 9     | 10.1 | 915.0    | 269.0      | 1.41      | 35.5   |

### White Oak Spp.

#### Stratum Total

#### Per Acre

#### Average Tree

| Sawtimber       | DBH  | Trees | Tons | Doyle BF | Cu. Ft. IB | BA   | Trees | Tons | Doyle BF | Cu. Ft. IB | SL CFT/Ft | Height |
|-----------------|------|-------|------|----------|------------|------|-------|------|----------|------------|-----------|--------|
|                 | 14   | 21    | 16   | 1,395    | 414        | 1.4  | 1     | 1.0  | 87.2     | 25.8       | 0.68      | 28.5   |
|                 | 15   | 11    | 12   | 1,104    | 307        | 0.8  | 1     | 0.7  | 69.0     | 19.2       | 0.71      | 40.5   |
|                 | 16   | 11    | 9    | 983      | 243        | 0.9  | 1     | 0.6  | 61.5     | 15.2       | 0.93      | 24.5   |
|                 | 18   | 21    | 28   | 3,333    | 747        | 2.4  | 1     | 1.8  | 208.3    | 46.7       | 1.08      | 32.5   |
|                 | 19   | 21    | 28   | 3,504    | 754        | 2.6  | 1     | 1.8  | 219.0    | 47.1       | 1.24      | 28.5   |
|                 | 21   | 11    | 16   | 2,143    | 418        | 1.6  | 1     | 1.0  | 133.9    | 26.1       | 1.60      | 24.5   |
|                 | 25   | 11    | 17   | 2,455    | 448        | 2.3  | 1     | 1.1  | 153.4    | 28.0       | 2.55      | 16.5   |
| Sawtimber Total | 17.9 | 107   | 125  | 14,918   | 3,330      | 12.0 | 7     | 7.8  | 932.4    | 208.2      | 1.10      | 28.5   |

| Pulpwood       | DBH  | Trees | Tons | Doyle BF | Cu. Ft. IB | BA  | Trees | Tons | Doyle BF | Cu. Ft. IB | SL CFT/Ft | Height |
|----------------|------|-------|------|----------|------------|-----|-------|------|----------|------------|-----------|--------|
|                | 6    | 11    | 1    | 0        | 30         | 0.1 | 1     | 0.1  | 0.0      | 1.9        | 0.00      | 20.5   |
|                | 10   | 21    | 8    | 0        | 213        | 0.7 | 1     | 0.5  | 0.0      | 13.3       | 0.00      | 29.0   |
|                | 11   | 11    | 5    | 0        | 143        | 0.4 | 1     | 0.3  | 0.0      | 8.9        | 0.00      | 33.5   |
|                | 12   | 21    | 13   | 0        | 336        | 1.0 | 1     | 0.8  | 0.0      | 21.0       | 0.00      | 33.0   |
|                | 13   | 11    | 8    | 0        | 208        | 0.6 | 1     | 0.5  | 0.0      | 13.0       | 0.00      | 35.5   |
|                | 16   | 11    | 12   | 0        | 328        | 0.9 | 1     | 0.8  | 0.0      | 20.5       | 0.00      | 37.5   |
| Pulpwood Total | 11.3 | 85    | 47   | 0        | 1,258      | 3.9 | 5     | 3.0  | 0.0      | 78.6       | 0.00      | 31.4   |

|                      |      |     |     |        |       |      |    |      |       |       |      |      |
|----------------------|------|-----|-----|--------|-------|------|----|------|-------|-------|------|------|
| White Oak Spp. Total | 14.9 | 192 | 172 | 14,918 | 4,589 | 15.9 | 12 | 10.8 | 932.4 | 286.8 | 1.10 | 29.8 |
|----------------------|------|-----|-----|--------|-------|------|----|------|-------|-------|------|------|

Tuesday, August 13, 2019

# Timber Volume Estimates - Black Creek 40

**Stratum:** Merchantable PH\_16 ac

**Acres:** 16

**Plots:** 15.00

**Cruiser:** JDT

**Cruise Date:** 08/13/2019

**Cruise Type:** Plot

**Plot Size/BAF:** 0.10

PAGE 4 OF 5

## Oak

|           |      |     |     |        |       |      |    |      |         |       |      |      |
|-----------|------|-----|-----|--------|-------|------|----|------|---------|-------|------|------|
| Oak Total | 15.3 | 331 | 334 | 29,557 | 8,893 | 29.0 | 21 | 20.9 | 1,847.3 | 555.8 | 1.22 | 32.2 |
|-----------|------|-----|-----|--------|-------|------|----|------|---------|-------|------|------|

## Misc. Hardwood

### Misc. Hardwood

#### Stratum Total

#### Per Acre

#### Average Tree

| Sawtimber       | DBH  | Trees | Tons | Doyle BF | Cu. Ft. IB | BA  | Trees | Tons | Doyle BF | Cu. Ft. IB | SL CFT/Ft | Height |
|-----------------|------|-------|------|----------|------------|-----|-------|------|----------|------------|-----------|--------|
|                 | 15   | 11    | 11   | 1,085    | 304        | 0.8 | 1     | 0.7  | 67.8     | 19.0       | 0.70      | 40.5   |
|                 | 17   | 11    | 10   | 1,178    | 274        | 1.1 | 1     | 0.6  | 73.6     | 17.1       | 1.05      | 24.5   |
| Sawtimber Total | 16.0 | 21    | 21   | 2,263    | 578        | 1.9 | 1     | 1.3  | 141.4    | 36.1       | 0.83      | 32.5   |

| Pulpwood       | DBH  | Trees | Tons | Doyle BF | Cu. Ft. IB | BA  | Trees | Tons | Doyle BF | Cu. Ft. IB | SL CFT/Ft | Height |
|----------------|------|-------|------|----------|------------|-----|-------|------|----------|------------|-----------|--------|
|                | 6    | 11    | 1    | 0        | 28         | 0.1 | 1     | 0.1  | 0.0      | 1.8        | 0.00      | 18.9   |
|                | 9    | 11    | 3    | 0        | 82         | 0.3 | 1     | 0.2  | 0.0      | 5.1        | 0.00      | 26.8   |
|                | 12   | 21    | 11   | 0        | 327        | 1.0 | 1     | 0.7  | 0.0      | 20.4       | 0.00      | 32.0   |
|                | 13   | 21    | 13   | 0        | 397        | 1.2 | 1     | 0.8  | 0.0      | 24.8       | 0.00      | 33.3   |
|                | 14   | 11    | 7    | 0        | 211        | 0.7 | 1     | 0.4  | 0.0      | 13.2       | 0.00      | 29.4   |
|                | 15   | 11    | 9    | 0        | 273        | 0.8 | 1     | 0.6  | 0.0      | 17.0       | 0.00      | 34.6   |
|                | 16   | 11    | 10   | 0        | 310        | 0.9 | 1     | 0.7  | 0.0      | 19.4       | 0.00      | 34.6   |
|                | 17   | 21    | 25   | 0        | 740        | 2.1 | 1     | 1.5  | 0.0      | 46.2       | 0.00      | 37.3   |
|                | 18   | 11    | 13   | 0        | 393        | 1.2 | 1     | 0.8  | 0.0      | 24.6       | 0.00      | 34.6   |
| Pulpwood Total | 13.5 | 128   | 93   | 0        | 2,761      | 8.4 | 8     | 5.8  | 0.0      | 172.6      | 0.00      | 32.0   |

|                      |      |     |     |       |       |      |   |     |       |       |      |      |
|----------------------|------|-----|-----|-------|-------|------|---|-----|-------|-------|------|------|
| Misc. Hardwood Total | 13.9 | 149 | 113 | 2,263 | 3,339 | 10.3 | 9 | 7.1 | 141.4 | 208.7 | 0.83 | 32.1 |
|----------------------|------|-----|-----|-------|-------|------|---|-----|-------|-------|------|------|

### Sweetgum

#### Stratum Total

#### Per Acre

#### Average Tree

| Sawtimber | DBH | Trees | Tons | Doyle BF | Cu. Ft. IB | BA  | Trees | Tons | Doyle BF | Cu. Ft. IB | SL CFT/Ft | Height |
|-----------|-----|-------|------|----------|------------|-----|-------|------|----------|------------|-----------|--------|
|           | 15  | 11    | 9    | 944      | 262        | 0.8 | 1     | 0.6  | 59.0     | 16.3       | 0.75      | 32.5   |
|           | 18  | 11    | 14   | 1,666    | 377        | 1.2 | 1     | 0.8  | 104.1    | 23.6       | 1.09      | 32.5   |
|           | 20  | 11    | 17   | 2,261    | 465        | 1.5 | 1     | 1.0  | 141.3    | 29.1       | 1.34      | 32.5   |

Tuesday, August 13, 2019



# Timber Volume Estimates - Black Creek 40

**Stratum:** Merchantable PH\_16 ac

**Acres:** 16

**Plots:** 15.00

**Cruiser:** JDT

PAGE 5 OF 5

**Cruise Date:** 08/13/2019

**Cruise Type:** Plot

**Plot Size/BAF:** 0.10

## Misc. Hardwood

| Sweetgum             |            | Stratum Total |             |                 |                   |           | Per Acre     |             |                 |                   | Average Tree     |               |
|----------------------|------------|---------------|-------------|-----------------|-------------------|-----------|--------------|-------------|-----------------|-------------------|------------------|---------------|
| Sawtimber Total      | 17.7       | 32            | 40          | 4,871           | 1,104             | 3.5       | 2            | 2.5         | 304.4           | 69.0              | 1.06             | 32.5          |
| Pulpwood             | <i>DBH</i> | <i>Trees</i>  | <i>Tons</i> | <i>Doyle BF</i> | <i>Cu. Ft. IB</i> | <i>BA</i> | <i>Trees</i> | <i>Tons</i> | <i>Doyle BF</i> | <i>Cu. Ft. IB</i> | <i>SL CFT/Ft</i> | <i>Height</i> |
|                      | 6          | 32            | 4           | 0               | 111               | 0.4       | 2            | 0.2         | 0.0             | 6.9               | 0.00             | 27.6          |
|                      | 7          | 11            | 2           | 0               | 59                | 0.2       | 1            | 0.1         | 0.0             | 3.7               | 0.00             | 34.6          |
|                      | 8          | 21            | 5           | 0               | 153               | 0.5       | 1            | 0.3         | 0.0             | 9.6               | 0.00             | 34.6          |
|                      | 14         | 11            | 11          | 0               | 337               | 0.7       | 1            | 0.7         | 0.0             | 21.1              | 0.00             | 58.3          |
|                      | 15         | 11            | 14          | 0               | 409               | 0.8       | 1            | 0.9         | 0.0             | 25.6              | 0.00             | 63.5          |
| Pulpwood Total       | 8.8        | 85            | 36          | 0               | 1,069             | 2.6       | 5            | 2.3         | 0.0             | 66.8              | 0.00             | 38.6          |
| Sweetgum Total       | 11.2       | 117           | 76          | 4,871           | 2,173             | 6.0       | 7            | 4.7         | 304.4           | 135.8             | 1.06             | 36.9          |
| Misc. Hardwood Total | 12.7       | 267           | 189         | 7,134           | 5,512             | 16.3      | 17           | 11.8        | 445.9           | 344.5             | 0.97             | 34.2          |
| <b>Stratum Total</b> | 13.7       | 1,365         | 1,342       | 122,317         | 39,501            | 96.8      | 85           | 83.9        | 7,644.8         | 2,468.8           | 0.92             | 39.3          |

Tuesday, August 13, 2019

**OFFER FORM**  
**Bid Date: Friday, September 13, 2019 @ 10:00 a.m.**

**Tompkins 40 Tract**  
**Listing #4659**  
**±40 Acres**

**Black Creek 40 Tract**  
**Listing #4658**  
**±40 Acres**

**Send Completed Offer Forms to us:**

**Mail:** P.O. Box 65, Arkadelphia, AR 71923

**Fax:** 870-246-3341

**Hand Deliver:** #4 Executive Circle, Arkadelphia, AR 71923

**E-mail:** [arkadelphia@kingwoodforestry.com](mailto:arkadelphia@kingwoodforestry.com)

Reference is made to the attached Kingwood Forestry Services, Inc. Notice of Land Sales. I submit the following as offer(s) for the purchase of tract(s) located in Nevada County, Arkansas and further described within the attached Notice of Land Sales (see attached maps and Conditions of Sale).

My offer(s) will remain valid through 10:00 a.m. Wednesday, September 18, 2019. Successful bidder(s) will be notified at or before that time by telephone, fax, or e-mail. If any of my offers are accepted, I am ready, willing, able, and obligated to execute a Contract of Sale within seven (7) business days with earnest money in the amount of five percent (5%) of purchase price. Closing is expected to be held within forty-five (45) days of offer acceptance. I have read and understand the Method of Sale and Conditions of Sale sections in this notice.

**Send offer form to:** Kingwood Forestry Services, Inc. (**Before 10:00 a.m., Friday, September 13, 2019**)  
P. O. Box 65, Arkadelphia, AR 71923 or fax to 870-246-3341  
E-mail completed offer form to: [arkadelphia@kingwoodforestry.com](mailto:arkadelphia@kingwoodforestry.com)

**Tompkins 40 Tract (Listing #4659—40 acres, more or less):** \$ \_\_\_\_\_

**Black Creek 40 Tract (Listing #4658—40 acres, more or less):** \$ \_\_\_\_\_

**Both Tracts Combined (±80 total acres):** \$ \_\_\_\_\_

Date: \_\_\_\_\_

Fax No.: \_\_\_\_\_

Company: \_\_\_\_\_  
Printed

Phone No.: \_\_\_\_\_

Name: \_\_\_\_\_  
Printed

Name: \_\_\_\_\_  
Signed

Address: \_\_\_\_\_  
Street City, State, Zip

Email: \_\_\_\_\_

*—Buyer acknowledges that Kingwood Forestry Services, Inc., is the agent of the seller in this land sale transaction.—*

**AREA BELOW FOR KINGWOOD USE ONLY**

Offer Acknowledged by Agent / Broker: \_\_\_\_\_  
Name Date

