

MuLLin



Leaflet | Powered by Esri

2019 Crop Year



Tract 2 of 2

Common Land Unit
 Farm 2552
 Tract 1281

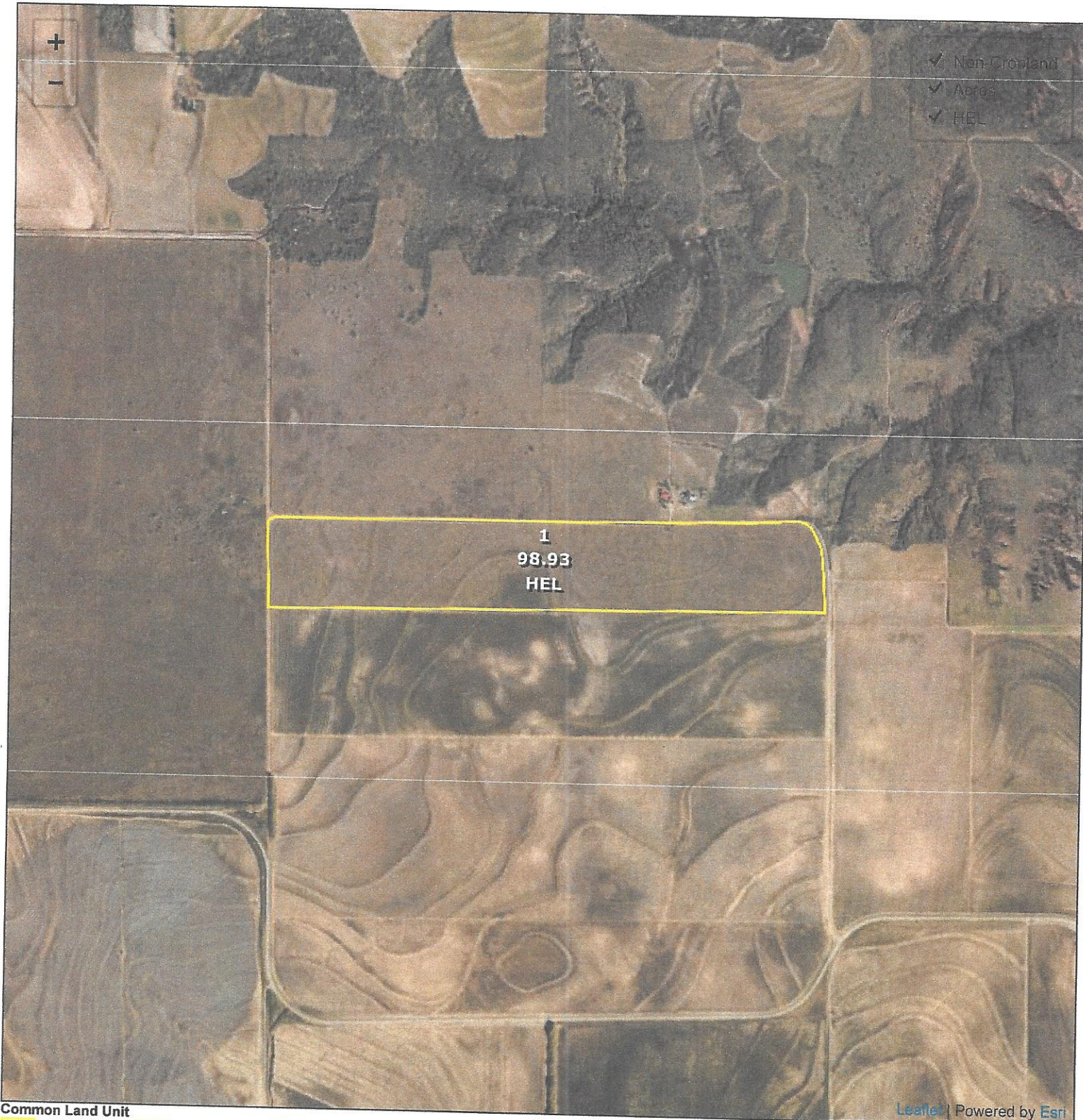
Cropland
 Non-cropland
 CRP

Wetland Determination Identifiers

- Restricted Use
- ▼ Limited Restrictions
- Exempt from Conservation Compliance Provisions

United States Department of Agriculture (USDA) Farm Service Agency (FSA) maps are for FSA Program administration only. This map does not represent a legal survey or reflect actual ownership; rather it depicts the information provided directly from the producer and/or National Agricultural Imagery Program (NAIP) imagery. The producer accepts the data 'as is' and assumes all risks associated with its use. USDA-FSA assumes no responsibility for actual or consequential damage incurred as a result of any user's reliance on this data outside FSA Programs. Wetland identifiers do not represent the size, shape, or specific determination of the area. Refer to your original determination (CPA-026 and attached maps) for exact boundaries and determinations or contact USDA Natural Resources Conservation Service (NRCS).

<https://intranet-apps.fsa.usda.gov/cars/setupReports.do?dispatchTo=report&report=fsa578Map&farmNu...> 6/26/2019



Common Land Unit
 Cropland Non-cropland CRP

Farm 2552
Tract 1280

Wetland Determination Identifiers
● Restricted Use
▼ Limited Restrictions
■ Exempt from Conservation Compliance Provisions

Leaflet | Powered by Esri

2019 Crop Year



Tract 1 of 2

United States Department of Agriculture (USDA) Farm Service Agency (FSA) maps are for FSA Program administration only. This map does not represent a legal survey or reflect actual ownership; rather it depicts the information provided directly from the producer and/or National Agricultural Imagery Program (NAIP) imagery. The producer accepts the data 'as is' and assumes all risks associated with its use. USDA-FSA assumes no responsibility for actual or consequential damage incurred as a result of any user's reliance on this data outside FSA Programs. Wetland identifiers do not represent the size, shape, or specific determination of the area. Refer to your original determination (CPA-026 and attached maps) for exact boundaries and determinations or contact USDA Natural Resources Conservation Service (NRCS).