

LAND FOR SALE

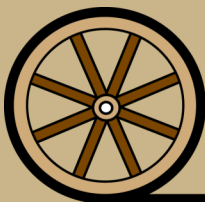
Ogallala Gravity Irrigated Farm

PRICE REDUCED

- Location:** Property is located south of the Ogallala, Nebraska I-80 interchange 1/2 mile, then west 1 mile on Road West 80.
- Legal Description:** Pt. E1/2 Section 13-T13N-R39W of the 6th P.M., Keith County, Nebraska.
- Acres:** 167.94 tax assessed acres
- Taxes:** 2018 taxes payable in 2019 - \$7,501.30
- Land Use:** Property includes 130 acres gravity irrigated cropland, 29 acres dryland cropland and 8 acres of winter rangeland.
- FSA Info:** Corn base: 148.9 acres @ 128 bushels; Wheat base 7.8 acres @ 40 bushels
- Water:** Irrigation well registration: G-129232; TPNRD Certified Irrigated acres: 130.17 acres
- Soils:** 61.9% Satanta loam, Class II & III; 26.7% Bayard very fine sandy loam, Class II; 11.4% other
- Equipment:** Irrigation power unit: Isuzu 6 cyl. Diesel with radiator and Murphy gauges, 125 Hp Amarillo gearhead, Sargent pump, underground mainline with risers, and gated pipe.
- Price:** \$550,000.00
- Comments:** Very productive gravity irrigated farm near Ogallala. Excellent tenant and community.
- Contact:** **Bruce Dodson, AFM; Listing Agent 308-539-4455 or bruce@agriaffiliates.com**
Don Walker, Mike Polk, Chase Dodson, John Childears, Brian Reynolds, Tony Eggleston, Brad Atkins



Bruce Dodson, AFM
Listing Agent



Offered Exclusively By:

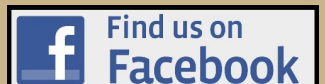
AGRI AFFILIATES, INC.
Providing Farm - Ranch Real Estate Services

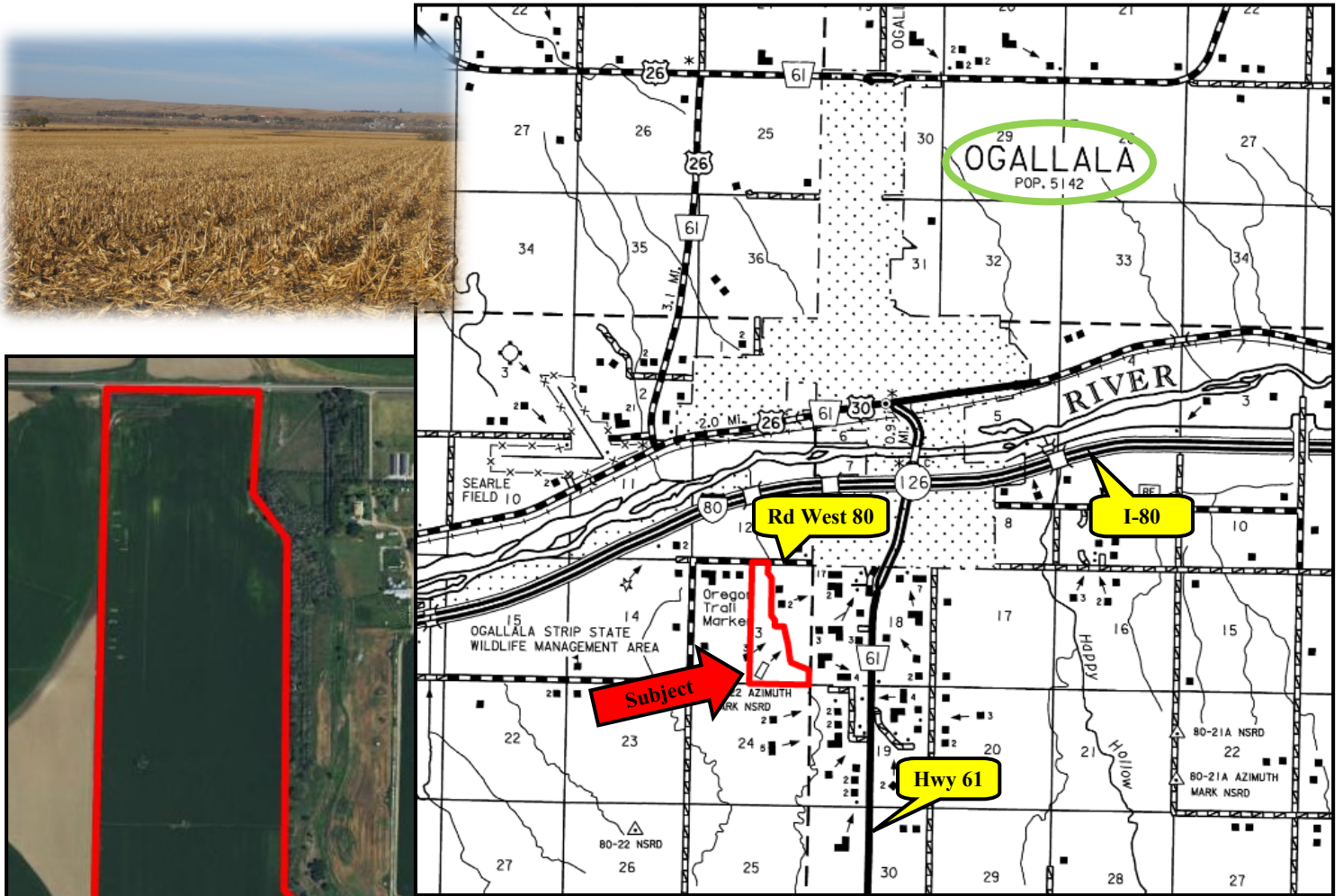
Information contained herein was obtained from sources deemed reliable. We have no reason to doubt the accuracy, but the information is not guaranteed. Prospective Buyers should verify all information. All maps provided by Agri Affiliates, Inc. are approximations only, to be used as a general guideline, and not intended as survey accurate. As with any agricultural land, this property may include noxious weeds. Agri Affiliates, Inc. and all agents are acting as Agent of the Seller.

NORTH PLATE OFFICE
P.O. Box 1166
401 Halligan Drive
North Platte, NE 69101
www.agriaffiliates.com

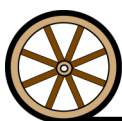
(308) 534-9240

Fax (308) 534-9244





Code	Soil Description	Acres	Percent of field	Non-Irr Class Legend	Non-Irr Class	Irr Class
1814	Satanta loam, 3 to 6 percent slopes	51.1	31.5%		IIIe	IIIe
1811	Satanta loam, 1 to 3 percent slopes	49.2	30.4%		Ile	Ile
1307	Bayard very fine sandy loam, 1 to 3 percent slopes	43.3	26.7%		Ile	Ile
1824	Satanta-Dix complex, 3 to 9 percent slopes	14.8	9.1%		Vs	IVe
1010	Bankard loamy sand, channeled, frequently flooded	3.7	2.3%		Vlw	



AGRI AFFILIATES, INC.
Providing Farm - Ranch Real Estate Services