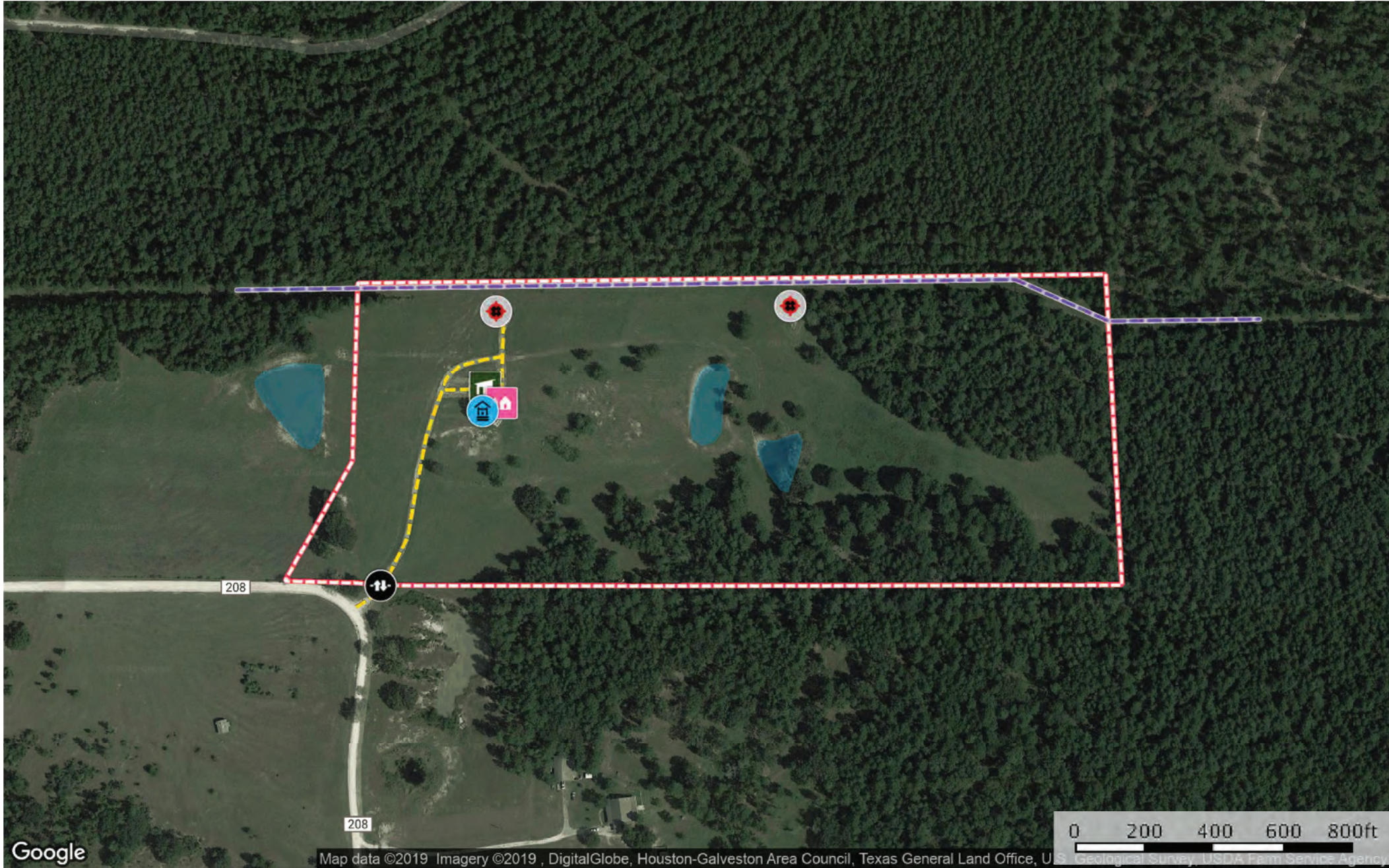


10419 County Rd 208 (33.87 Acres)  
Grimes County, Texas, 33.87 AC +/-

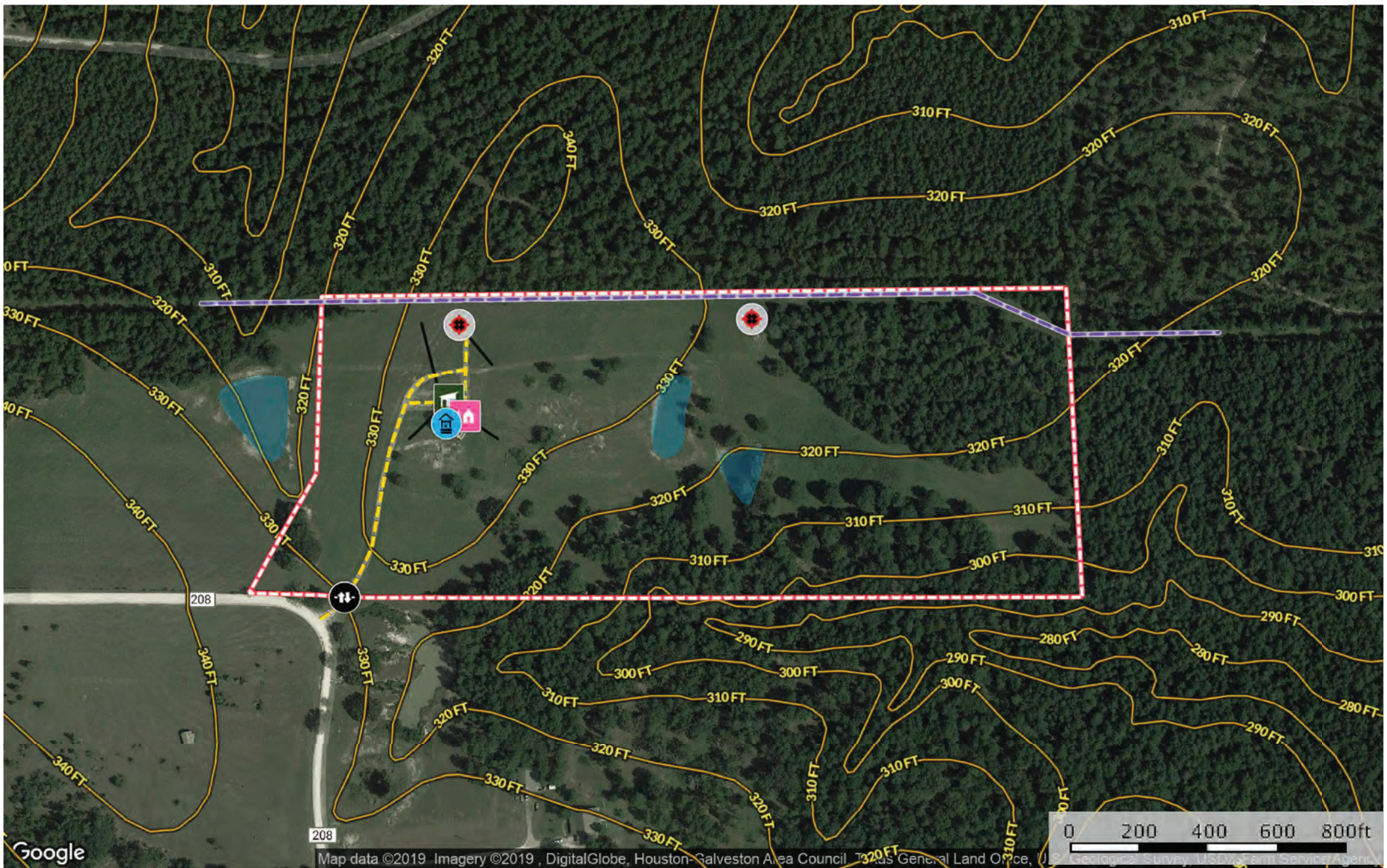


- Well
- Cabin
- Gate
- Shooting Range
- Shop
- Road / Trail
- Pipeline
- 33.87 Acres
- Pond / Tank



# 10419 County Rd 208 (33.87 Acres)

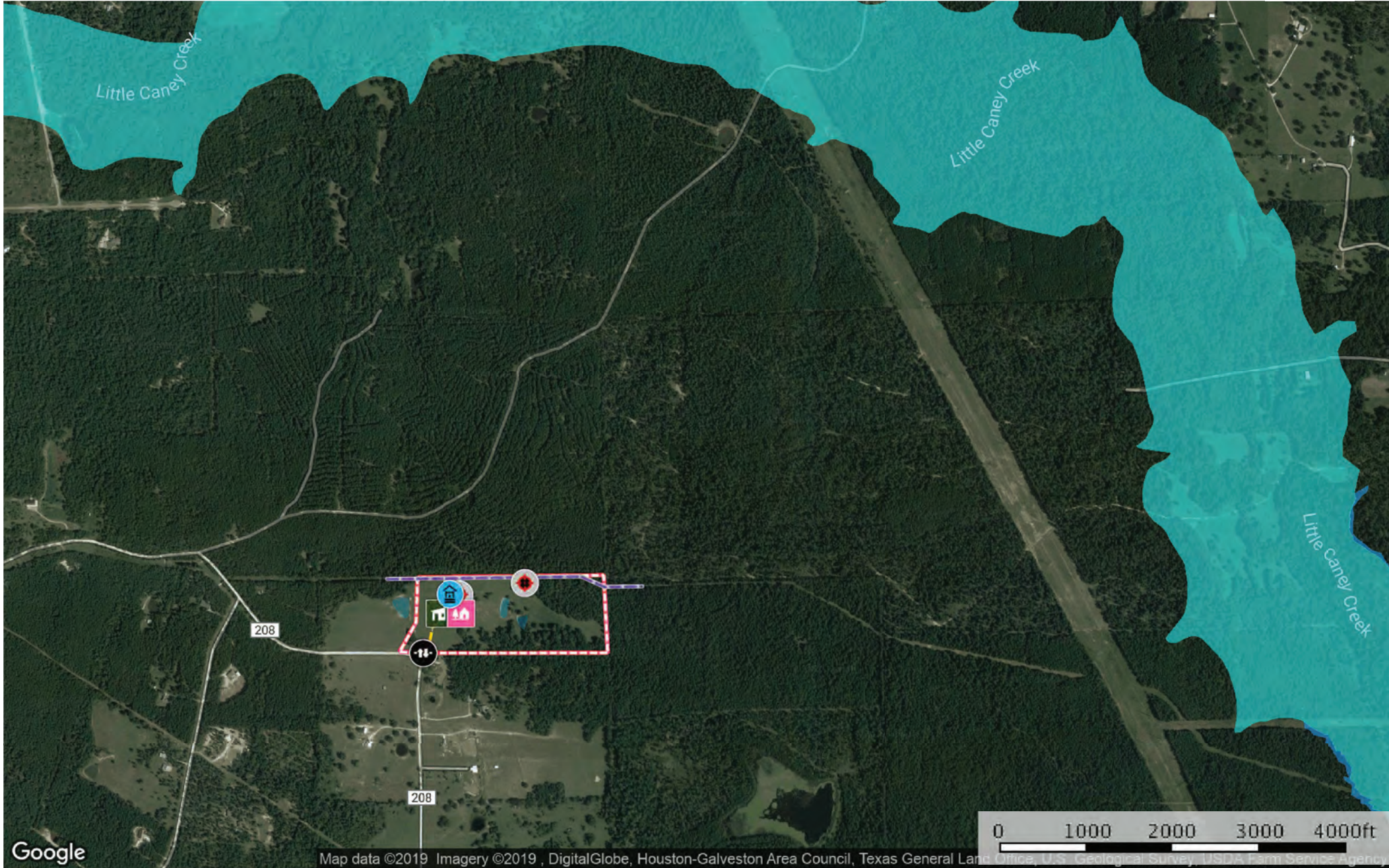
Grimes County, Texas, 33.87 AC +/-



- Well
- Cabin
- Gate
- Shooting Range
- Shop
- Road / Trail
- Pipeline
- 33.87 Acres
- Pond / Tank



10419 County Rd 208 (33.87 Acres)  
Grimes County, Texas, 33.87 AC +/-



Well

Cabin

Gate

Shooting Range

Shop

Road / Trail

Pipeline

33.87 Acres

Pond / Tank

100 Year Floodplain

500 Year Floodplain

Floodway

Special

Unmapped/ Not Included



10419 County Rd 208 (33.87 Acres)  
Grimes County, Texas, 33.87 AC +/-



- Well
- Cabin
- Gate
- Shooting Range
- Shop
- Road / Trail
- Pipeline
- 33.87 Acres
- Pond / Tank



| 33.87 Acres 33.9 ac

SOIL CODE	SOIL DESCRIPTION	ACRES	%	CAP
DeC	Depcor loamy fine sand, 1 to 5 percent slopes	8.4	24.9	3e
LtD	Latium clay, 5 to 8 percent slopes	0.8	2.37	6e
FrC	Frelsburg clay, 1 to 5 percent slopes	0.0	0.06	3e
HuC	Huntsburg loamy fine sand, 1 to 5 percent slopes	24.6	72.68	4e
TOTALS		33.9	100%	3.8

## Capability Legend

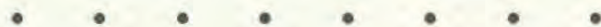
Increased Limitations and Hazards

Decreased Adaptability and Freedom of Choice Users

Land, Capability  
Class(non-irrigated)



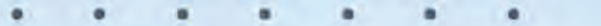
'Wild Life'



Forestry



Limited



Moderate



Intense



Limited



Moderate



Intense



Very Intense



## Grazing Cultivation

(c) climatic limitations (e) susceptibility to erosion

(s) soil limitations within the rooting zone (w) excess of water