

Farm for Sale

Busey Farm Brokerage



CHAMPAIGN COUNTY – FARM FOR SALE

Birkett Farm

8.485 +/- Surveyed Acres
Sidney Township, Champaign County, Illinois

Location

The Birkett Farm is located 1.5 miles East of Sidney, IL. It is located on the south side of the Sidney Slab at the corner of 1000 N and 2300E.

Abbreviated Legal Description

All that part of Lot 8 of a Subdivision of a part of the East Half of the East Half of Section 11, Township 18 North, Range 10 East of the 3rd Principal Meridian situated in Sidney Township, Champaign County, IL.

Contact Information



Daniel Herriott

Listing Broker

O: 217-351-2757

C: 217-722-5979

busey.com

3002 W. Windsor Rd., Champaign, IL 61822

Phone: 217-353-7101 Fax: 217-351-2848

Steve Myers: Managing Broker

O: 309-962-2901 C: 309-275-4402

steve.myers@busey.com

Listing Price

8.485 Acres x \$9,000/Ac = \$76,365

Lease/Possession

The farm lease is open for the 2020 crop year.

Champaign County FSA Data

Farm #	3100	Tract #	3838
Total Acres:	7.19	Tillable Acres:	7.19
Corn Base Acres:	3.50	Soybean Base Acres:	3.50
HEL/Wetlands:	N/A	Program:	ARC-CO

PLC Payment Yields

Corn Yield:	175	Soybean Yield:	47
-------------	-----	----------------	----

Real Estate Tax Information

Parcel ID#	Acres	2018 Assessed Value	2018 Taxes Payable 2017
24-28-11-400-004	8.66	\$5,060.00	\$319.04

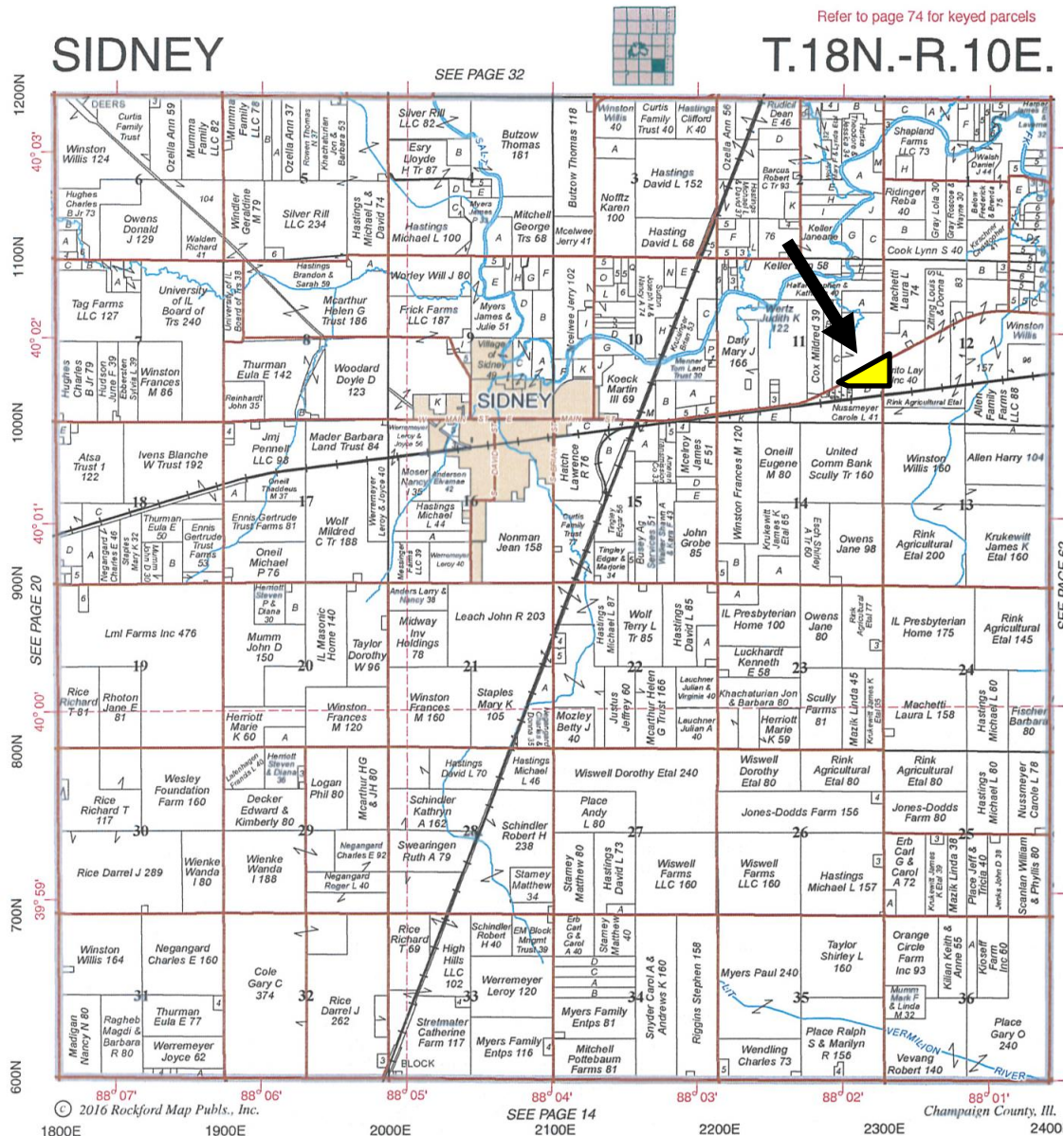
Yield History

	<u>Corn</u>	<u>SB</u>
2018		Hay Field
2017	195.3	-
2016	-	80.0
2015	203.0	-

Disclaimer: The information contained in this brochure is considered accurate. It is subject to verification and no liability for errors or omissions is assumed. There are no warranties, expressed or implied, as to the information herein contained, and it is recommended that an independent inspection of the property be made by all buyers.

Agency: Busey Farm Brokerage, a division of Busey Bank, its agents and representatives, are agents of the Seller

Plat Map



Reprinted with permission of Rockford Map Publishers, Inc.



Busey FARM
BROKERAGE

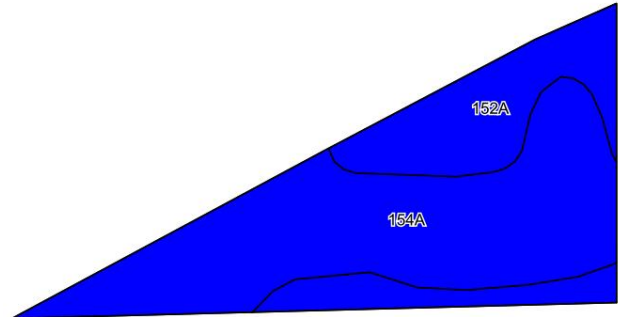
Licensed Real Estate Broker Corporation
Busey Farm Brokerage

Phone: 217-353-7101
Fax: 217-351-2848

Disclaimer: The information contained in this brochure is considered accurate. It is subject to verification and no liability for errors or omissions is assumed. There are no warranties, expressed or implied, as to the information herein contained, and it is recommended that an independent inspection of the property be made by all buyers.

Agency: Busey Farm Brokerage, a division of Busey Bank, its agents and representatives, are agents of the Seller

Aerial Map and Soil Information



Soil Code	Soil Description	Estimated Acres	Percent of Field	Corn Bu/A	Soy Bu/A	Crop Productivity Index for optimum management
154A	Flanagan silt loam	4.79	66.6%	194	63	144
152A	Drummer silty clay loam	2.40	33.4%	195	63	144
Weighted Average				194.3	63.0	144.0



Licensed Real Estate Broker Corporation

Daniel Herriott
Listing Broker

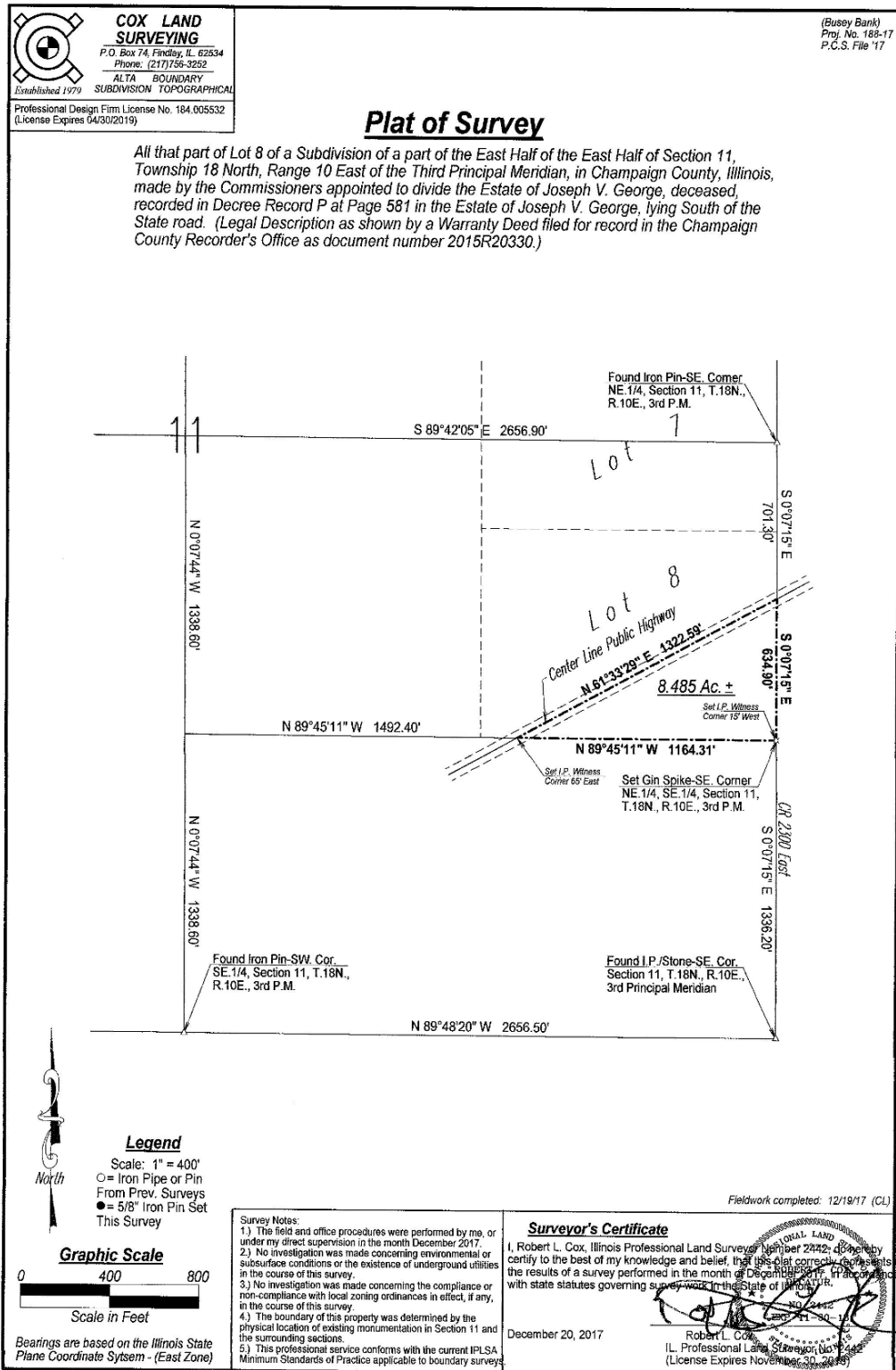
Phone: 217-351-2757

Cell: 217-722-5979

daniel.herriott@busey.com

Disclaimer: The information contained in this brochure is considered accurate. It is subject to verification and no liability for errors or omissions is assumed. There are no warranties, expressed or implied, as to the information herein contained, and it is recommended that an independent inspection of the property be made by all buyers.

Agency: Busey Farm Brokerage, a division of Busey Bank, its agents and representatives, are agents of the Seller



Disclaimer: The information contained in this brochure is considered accurate. It is subject to verification and no liability for errors or omissions is assumed. There are no warranties, expressed or implied, as to the information herein contained, and it is recommended that an independent inspection of the property be made by all buyers.

Agency: Busey Farm Brokerage, a division of Busey Bank, its agents and representatives, are agents of the Seller