

Kansas  
Dickinson

U.S. Department of Agriculture  
Farm Service Agency

**FARM: 8553**

Prepared: 8/13/19 1:12 PM

Crop Year: 2019

Report ID: FSA-156EZ

**Abbreviated 156 Farm Record**

Page: 2 of 2

DISCLAIMER: This is data extracted from the web farm database. Because of potential messaging failures in MIDAS, this data is not guaranteed to be an accurate and complete representation of data contained in the MIDAS system, which is the system of record for Farm Records.

Crop	Base Acreage	CTAP Tran Yield	PLC Yield	CCC-505 CRP Reduction
SOYBEANS	9.5		22	0.0
<b>Total Base Acres:</b>	<b>85.7</b>			

Owners: WALKER FEEDLOT INC

Other Producers: None

Tract Number: 7915      Description 23-15-3

FSA Physical Location : Dickinson, KS

ANSI Physical Location: Dickinson, KS

BIA Range Unit Number:

HEL Status: HEL: conservation system is being actively applied

Wetland Status: Tract does not contain a wetland

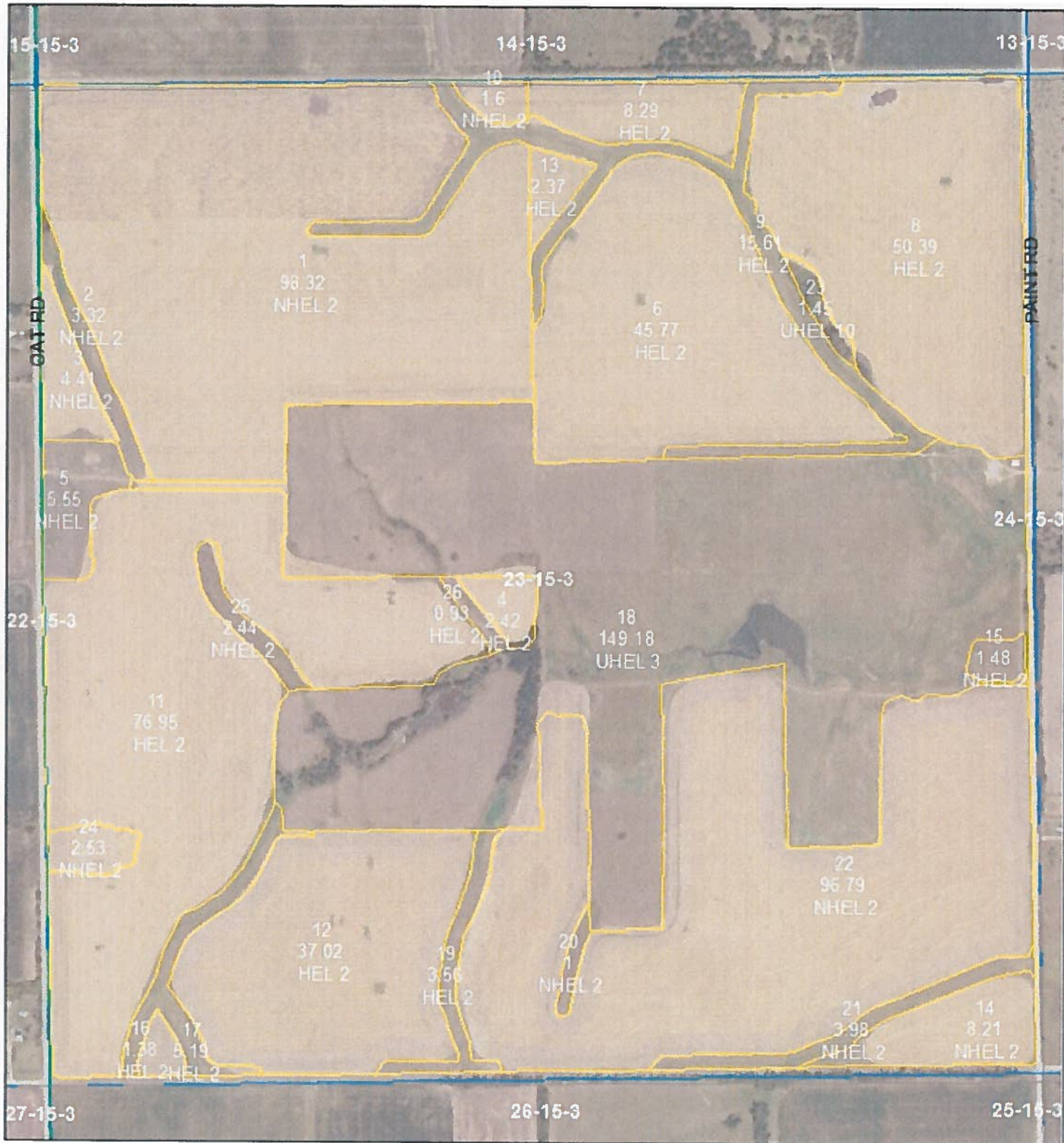
WL Violations: None

Farmland	Cropland	DCP Cropland	WBP	WRP/EWP	CRP Cropland	GRP
630.14	479.51	479.51	0.0	0.0	0.0	0.0
State Conservation	Other Conservation	Effective DCP Cropland	Double Cropped	MPL/FWP		
0.0	0.0	479.51	0.0	0.0		

Crop	Base Acreage	CTAP Tran Yield	PLC Yield	CCC-505 CRP Reduction
WHEAT	143.2		37	0.0
OATS	0.2		40	0.0
GRAIN SORGHUM	166.2		76	0.0
SOYBEANS	72.3		22	0.0
<b>Total Base Acres:</b>	<b>381.9</b>			

Owners: WALKER FEEDLOT INC

Other Producers: None



**United States Department of Agriculture  
Farm Service Agency**

Farm: 8553  
Tract: 7915

**Dickinson County, KS-CY 2019**  
**Non Irrigated Unless Otherwise Indicated**  
**All Wheat HRW, NI, GR**  
**All Sorghum GRS, NI, GR**  
**All Corn Yel, NI, GR**  
**All Soybeans, COM, NI, GR**



September 13, 2018

Disclaimer: Wetland identifiers do not represent the size, shape or specific determination of the area.  
Refer to your original determination (CPA-026 and attached maps) for exact wetland  
boundaries and determinations, or contact NRCS.