

LAND FOR SALE

Perkins County CRP & Pasture Offered At \$125,000

Total Acres: 148.87+/- (per county assessor)

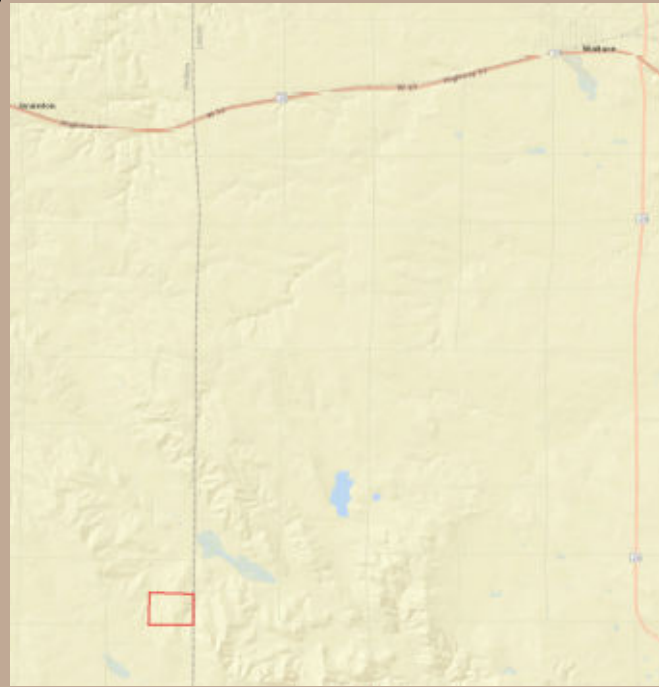
Property Description: This is a nice income generating farm with 58.69+/- acres of CRP and 88.34+/- acres of pasture. Offers great upland bird habitat! Perfect hunting spot for family and friends!

Legal Description: SE1/4 Section 25,
Township 9 North, Range 35 West, Perkins
County, Nebraska

2018 Taxes: \$1,087.12

CRP Annual Payment: \$2,317.00

Driving Directions: From Wallace, NE travel south on Hwy 25 4 miles to Padgett Road. Head west 4 miles to S. Blackwood Road. Travel south on S. Blackwood Road 3 1/2 miles to Cecava Road. Head west 1 mile to W. County Line Road. Farm will be on southwest corner of intersection.



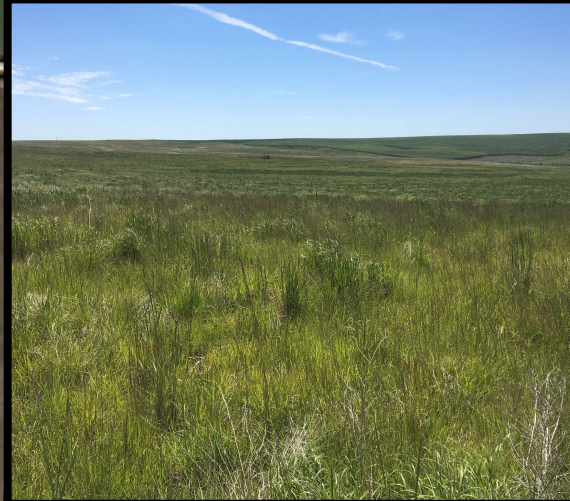
Cord Hesseltine

308.539.2192

415 W. 4th Ave. • Holdrege, NE 68949

AgWestLand.com

CONTACT US FOR MORE INFORMATION



The information contained herein is as obtained by AgWest Land Brokers—Holdrege, NE from the owner and other sources. Even though this information is considered reliable, neither broker nor owner make any guarantee, warranty or representation as to the correctness of any data or descriptions. The accuracy of such statements should be determined through independent investigation made by the prospective purchaser. This offer for sale is subject to prior sale, errors and omissions, change of price, terms or other conditions or withdrawal from sale in whole or in part, by seller without notice and at the sole discretion of seller. Readers are urged to form their own independent conclusions and evaluations in consultation with legal counsel, accountants, and/or investment advisors concerning any and all material contained herein.