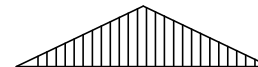
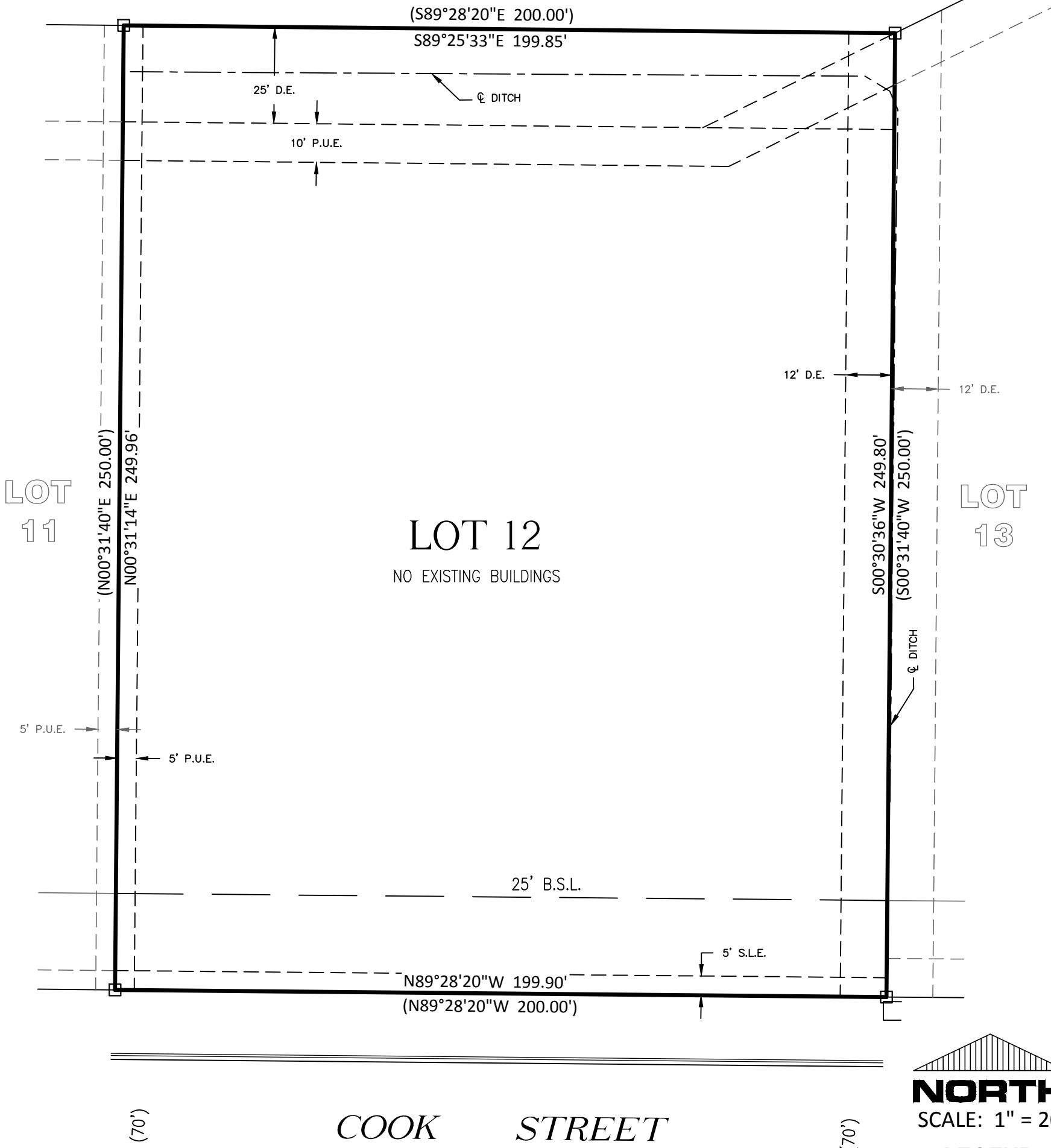


# PLAT OF SURVEY

LOT 12 SOUTH CREEK 2ND ADDITION, BEING A SUBDIVISION OF PART OF THE NORTH HALF OF SECTION 21, TOWNSHIP 32 NORTH, RANGE 12 EAST OF THE THIRD PRINCIPAL MERIDIAN IN KANKAKEE COUNTY, ILLINOIS.

## OUTLOT 2



**NORTH**  
SCALE: 1" = 20'

### LEGEND

	FOUND IRON ROD
7.77'	MEASURED DATA
(7.77')	RECORDED DATA
P.U.E.	PUBLIC UTILITY EASEMENT
D.E.	DRAINAGE EASEMENT
B.S.L.	BUILDING SETBACK LINE
S.L.E.	STREET LIGHT EASEMENT

I, MARK J. SCHIERHOLZ, AN ILLINOIS PROFESSIONAL LAND SURVEYOR, DO HEREBY CERTIFY THAT I HAVE SURVEYED THE ABOVE DESCRIBED PROPERTY AND THAT THE PLAT HEREON DRAWN IS A TRUE AND CORRECT REPRESENTATION OF SAID SURVEY. ALL DISTANCES ARE IN FEET AND DECIMAL PARTS THEREOF. THIS PROFESSIONAL SERVICE CONFORMS TO THE CURRENT ILLINOIS MINIMUM STANDARDS FOR A BOUNDARY SURVEY.

DATED THIS 8th DAY OF OCTOBER, A.D. 2019.

ILLINOIS PROFESSIONAL LAND SURVEYOR NO. 035-003105  
LICENSE EXPIRES NOVEMBER 30, 2020



**CIVIL ENGINEERING  
SURVEYING**

**M GINGERICH GEREAX & ASSOCIATES**  
Professional Design Firm License # 184.001808  
P. 815-939-4921 [www.mg2a.com](http://www.mg2a.com) F. 815-939-9810  
240 N. INDUSTRIAL DRIVE | BRADLEY, IL. 60915

ORDERED BY: MIDLAND STATES BANK

JOB NUMBER: 19-318

DR BY: MLZ

FIELD WORK COMPLETED: 10-7-2019

SB: 136 P: 33