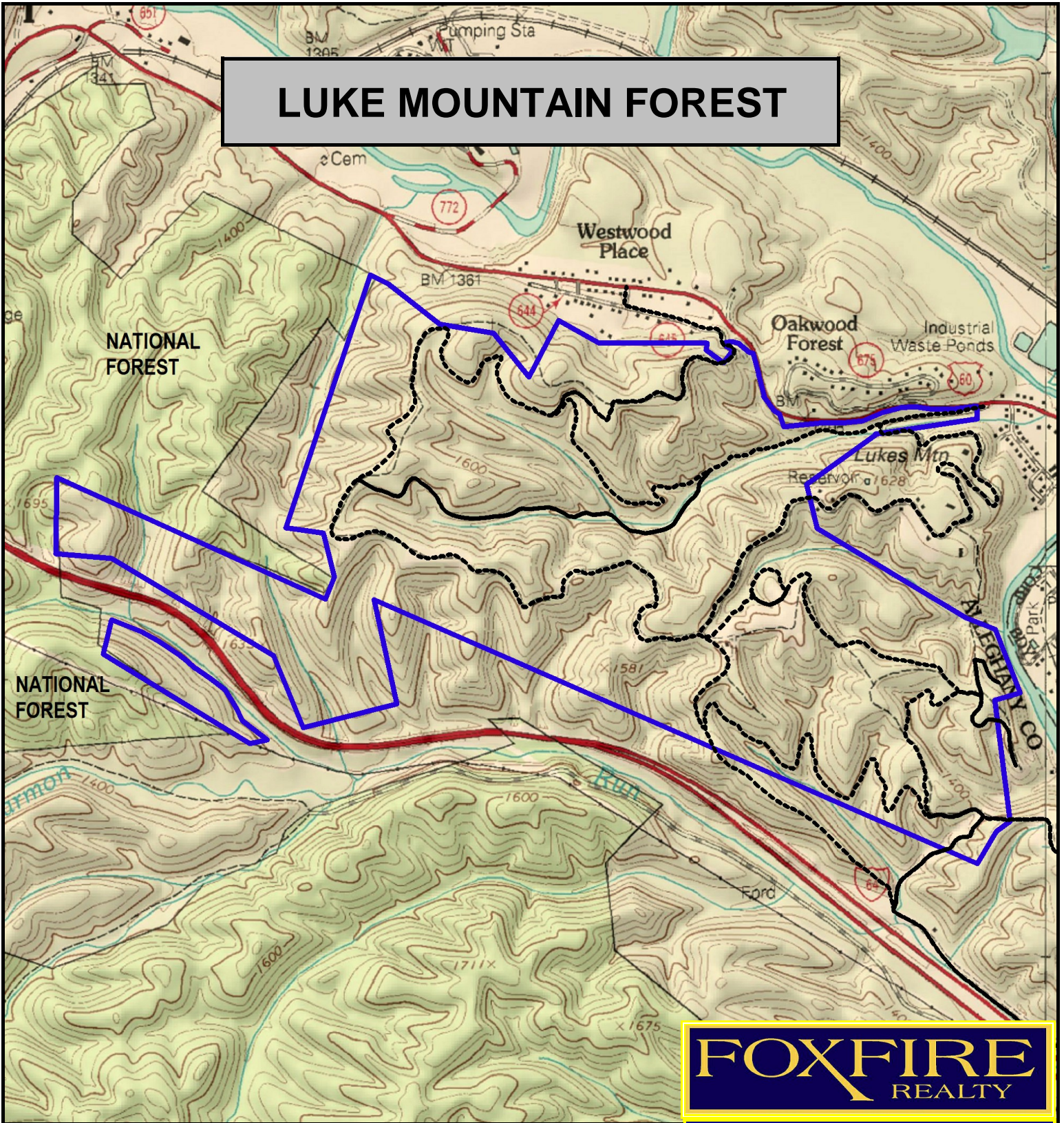


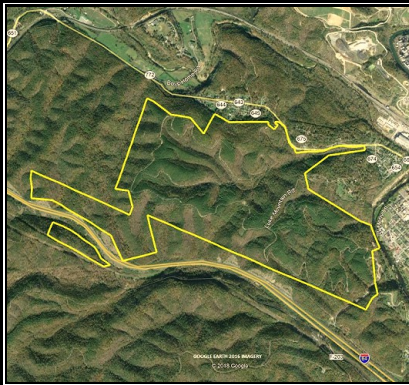
LUKE MOUNTAIN FOREST



NATIONAL FOREST

NATIONAL FOREST

FOXFIRE
REALTY



LUKE MOUNTAIN FOREST, Allegheny County, VA (topographic map)
Elevation Range: 1365' - 1670' +/-; Google Coordinates:
LAT 37.796776 (N), LON -80.002482 (W)
This map is for general location purposes only. Consult a licensed land
surveyor for actual boundary location and acreage.

RICHARD GRIST, Broker - Auctioneer - Forester
304.646.8837 Richard@Foxfirenation.com
WWW.FOXFIRENATION.COM

FOR TOPO MAP SCALE 1:18000 1 INCH = 1,500 FT.

