

Commercial Development Wentzville Parkway Wentzville, MO



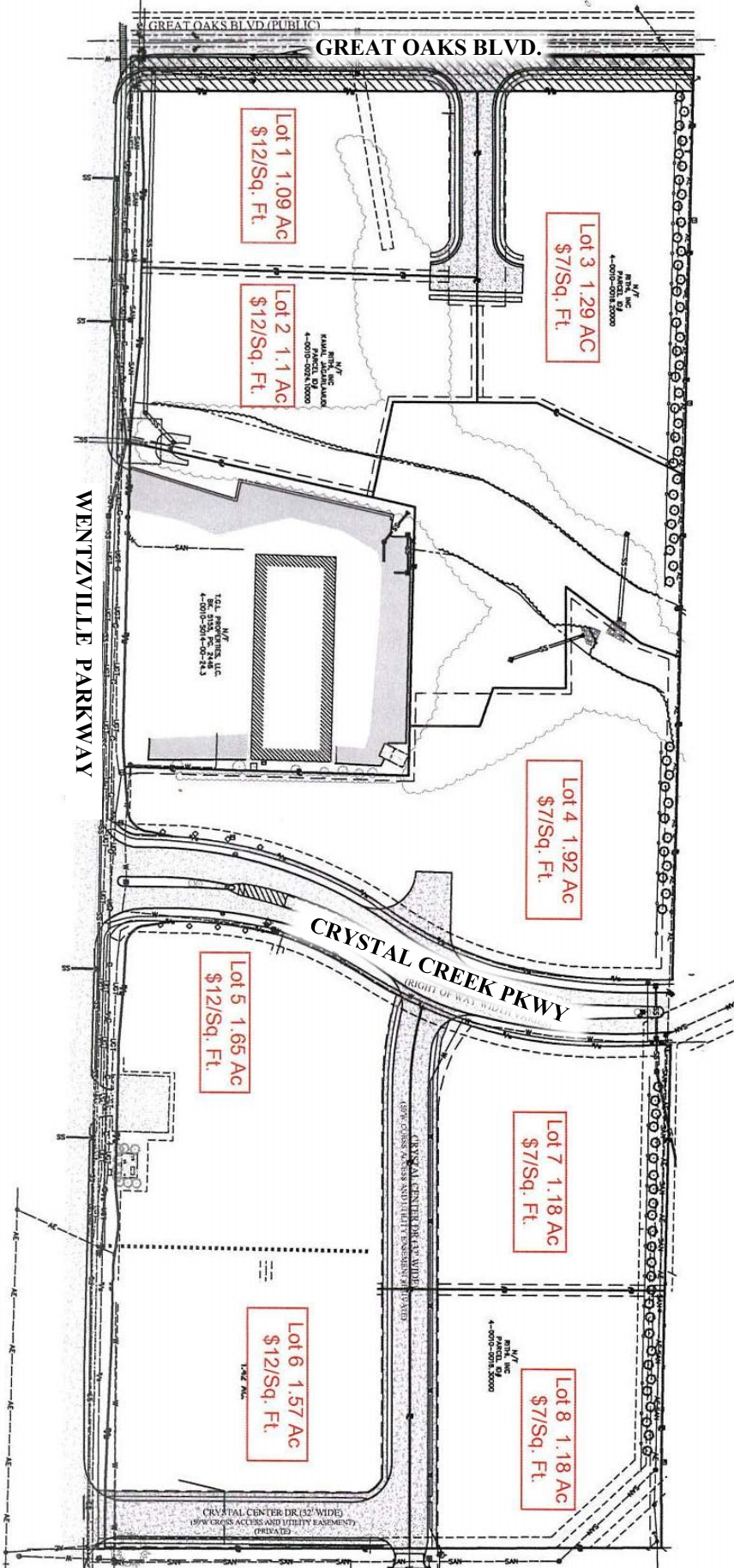
- ◆ Site subdivided into 1 to 5 acre graded pad sites
- ◆ Located on Wentzville Parkway
- ◆ High Traffic Area with Great Visibility
- ◆ Easy Access to I-70 & Hwy 61
- ◆ St. Charles County Population of 375,000+
- ◆ Population of 53,500+ within 5 miles
- ◆ 37,000 ADT on Wentzville Parkway in front of site
- ◆ Great Site for Fast Food, Restaurant, Retail, Medical or Office
- ◆ Zoned C-2 Commercial
- ◆ All utilities available to site
- ◆ Located near Wal-Mart, CVS, Home Depot, Target
- ◆ Site Plan, Survey, Topo, Phase I Environmental Study available



For more information contact:

Rick Meyer 314-565-7824 (Cell)
rick@meyerlistings.com Office: 636-462-5555
www.meyerlistings.com

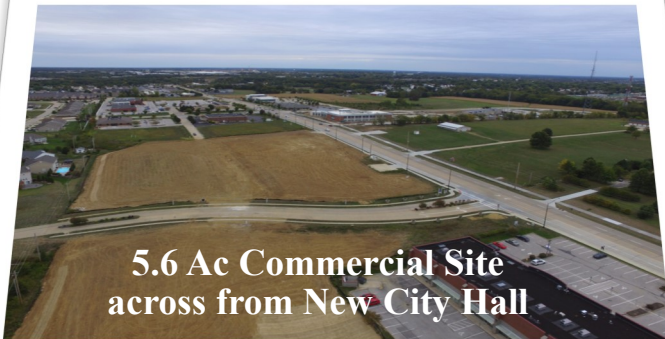
SITE PLAN 2



MEYER & COMPANY REAL ESTATE
192 N. Lincoln Drive
Troy, MO 63379

Rick Meyer
314-565-7824
www.meyerlistings.com

12.8 Acre Commercial, Graded Pad Sites on busy Wentzville Parkway and adjoins large residential area.



5.6 Ac Commercial Site
across from New City Hall



4.29Ac Commercial Lot
Wentzville Parkway & Great Oaks



View of Wentzville Parkway
Toward I-70



View of Wentzville Pkwy/Crystal Creek
Toward Hwy 61

MEYER & COMPANY REAL ESTATE
192 N. Lincoln Drive
Troy, MO 63379

Rick Meyer
314-565-7824
www.meyerlistings.com