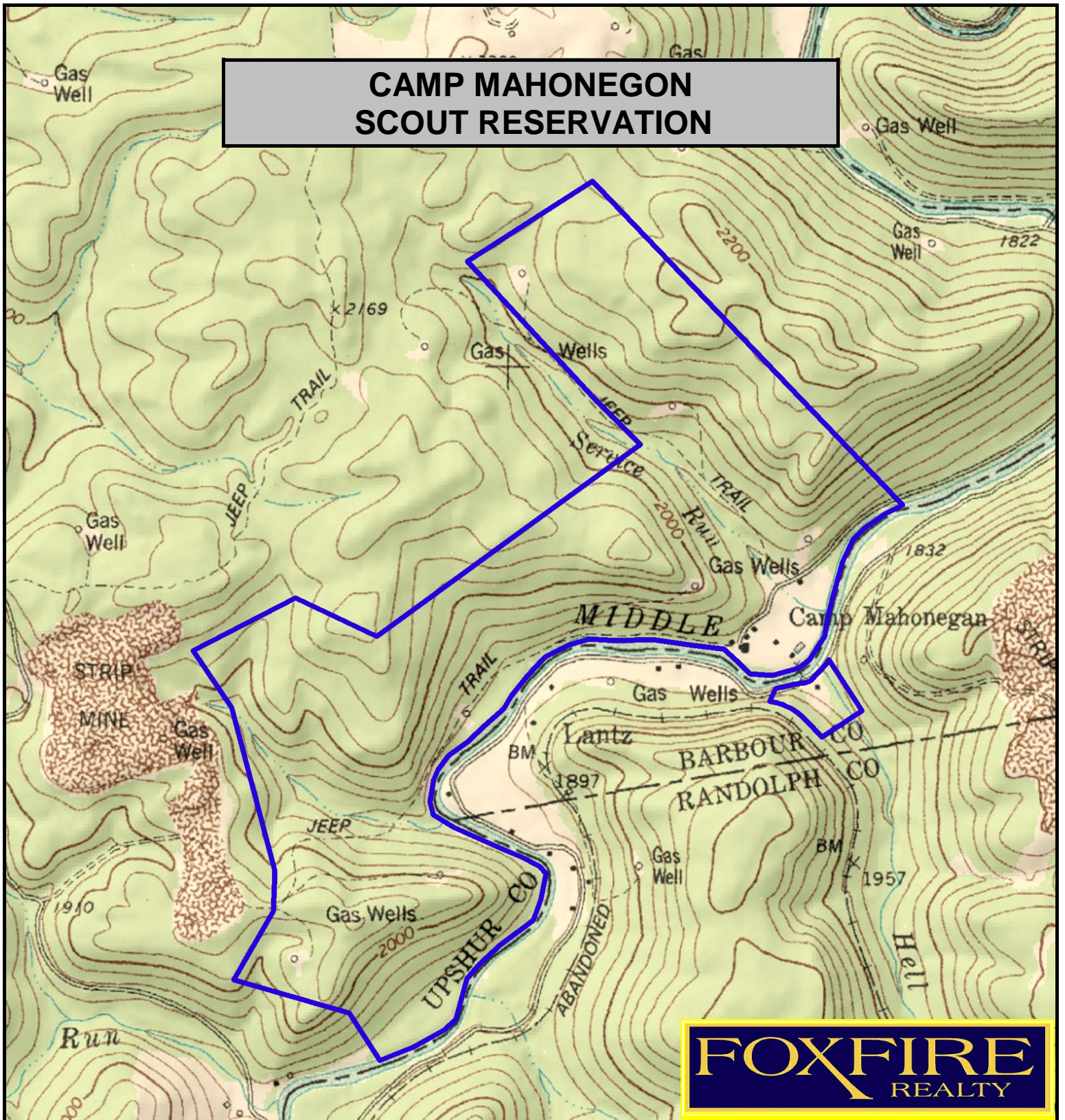


CAMP MAHONEGON SCOUT RESERVATION



FOXFIRE
REALTY

CAMP MAHONEGON, Upshur & Barbour Counties, WV (topographic map)
Elevation Range: 1820' - 2203' +/- Google Coordinates:
LAT 38.951480 (N), LON -80.075505 (W)
This map is for general location purposes only. Consult a licensed land
surveyor for actual boundary location and acreage.

RICHARD GRIST, Broker - Auctioneer - Forester
304.646.8837 Richard@Foxfirenation.com
WWW.FOXFIRENATION.COM

FOR TOPO MAP

SCALE 1:14400

1 INCH = 1,200 FT.

