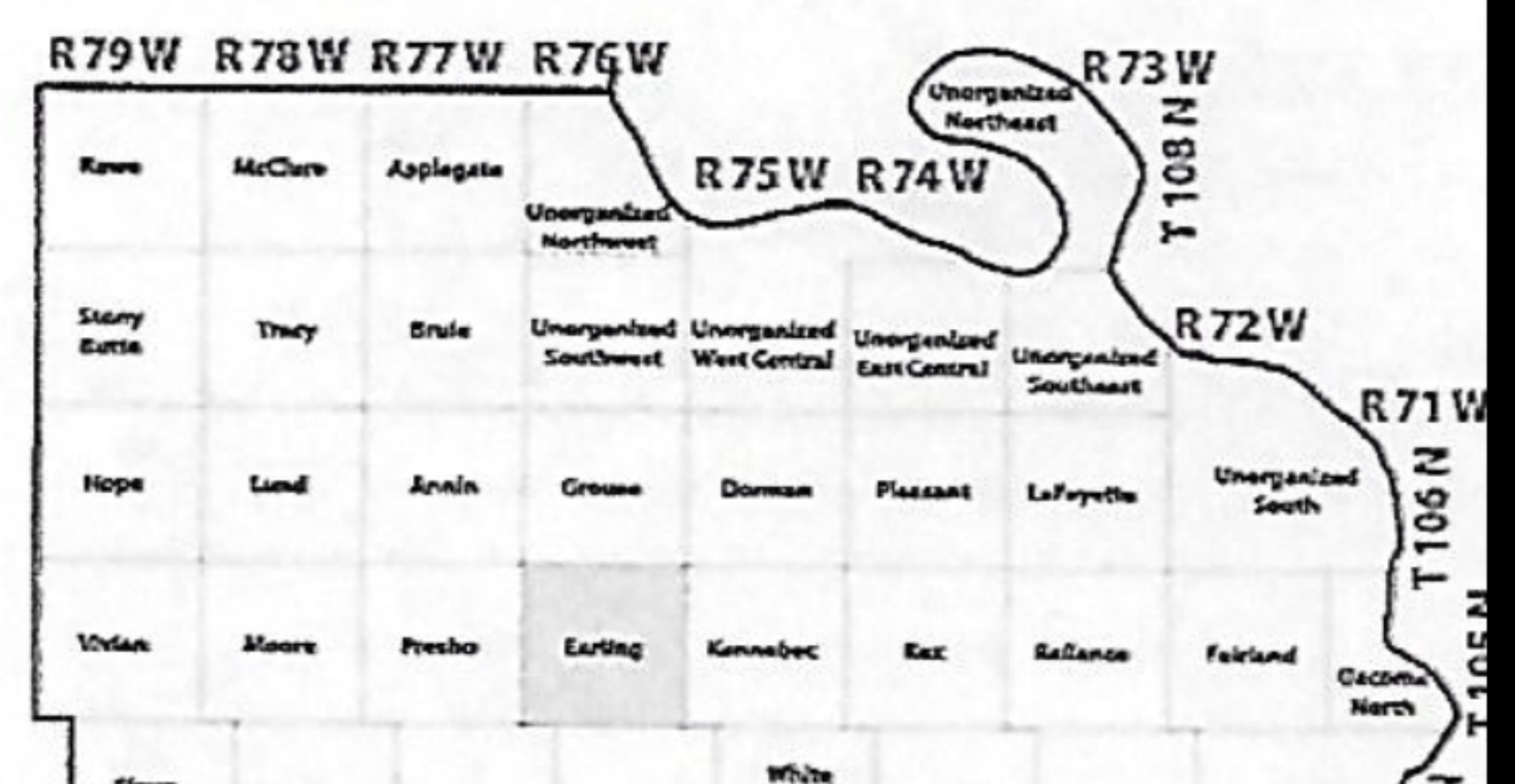


For Sale: 2500 per acre

Tract 1: 160 (+/-) acres 2500 per acre
Tract 2: 89.68 (+/-) acres 2500 per acre

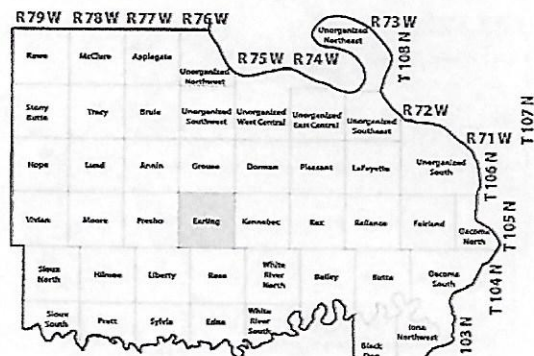
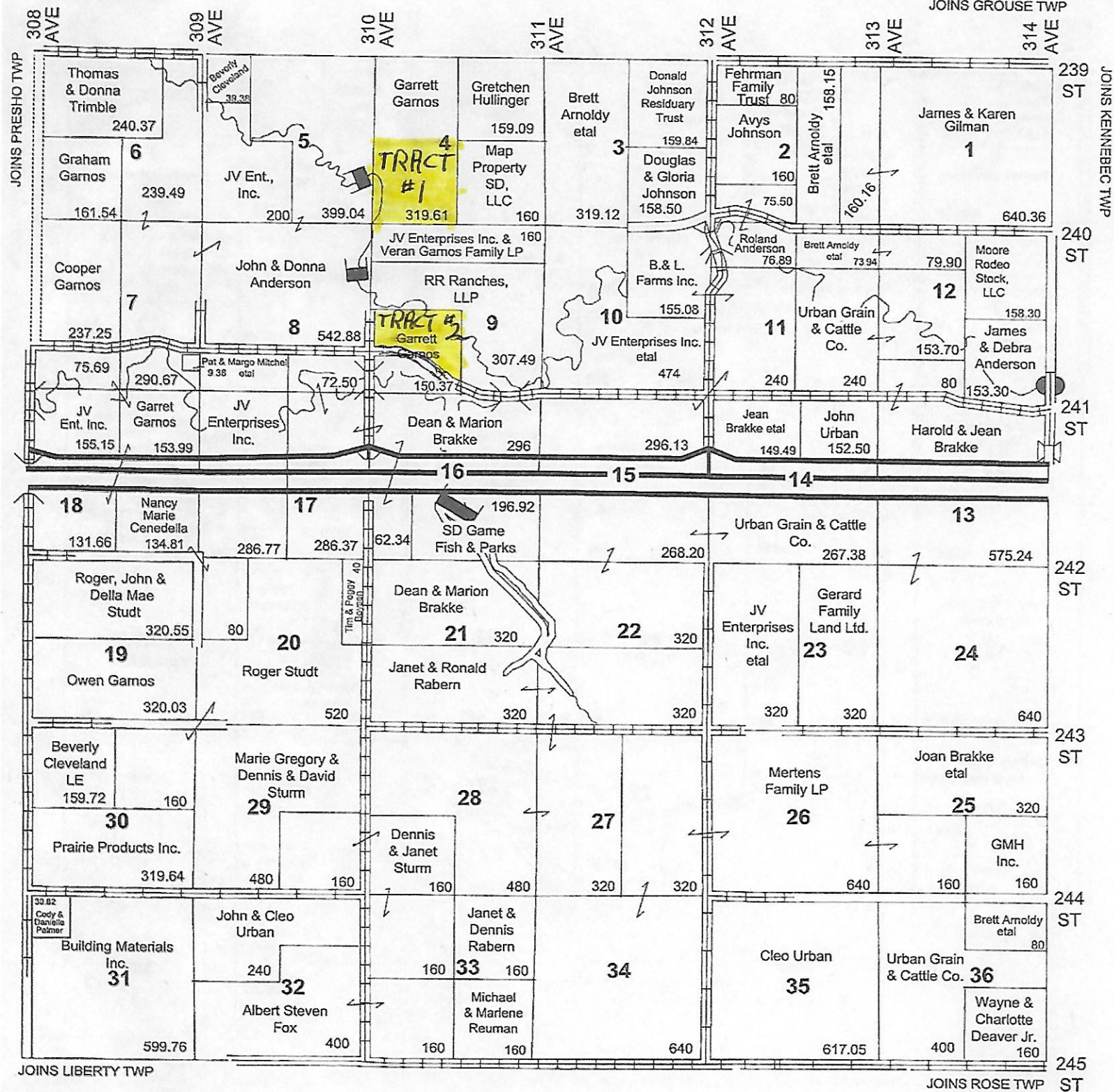
Present use: Pasture, CRP (comes out in 2020),
Tillable acres, Pheasant hunting

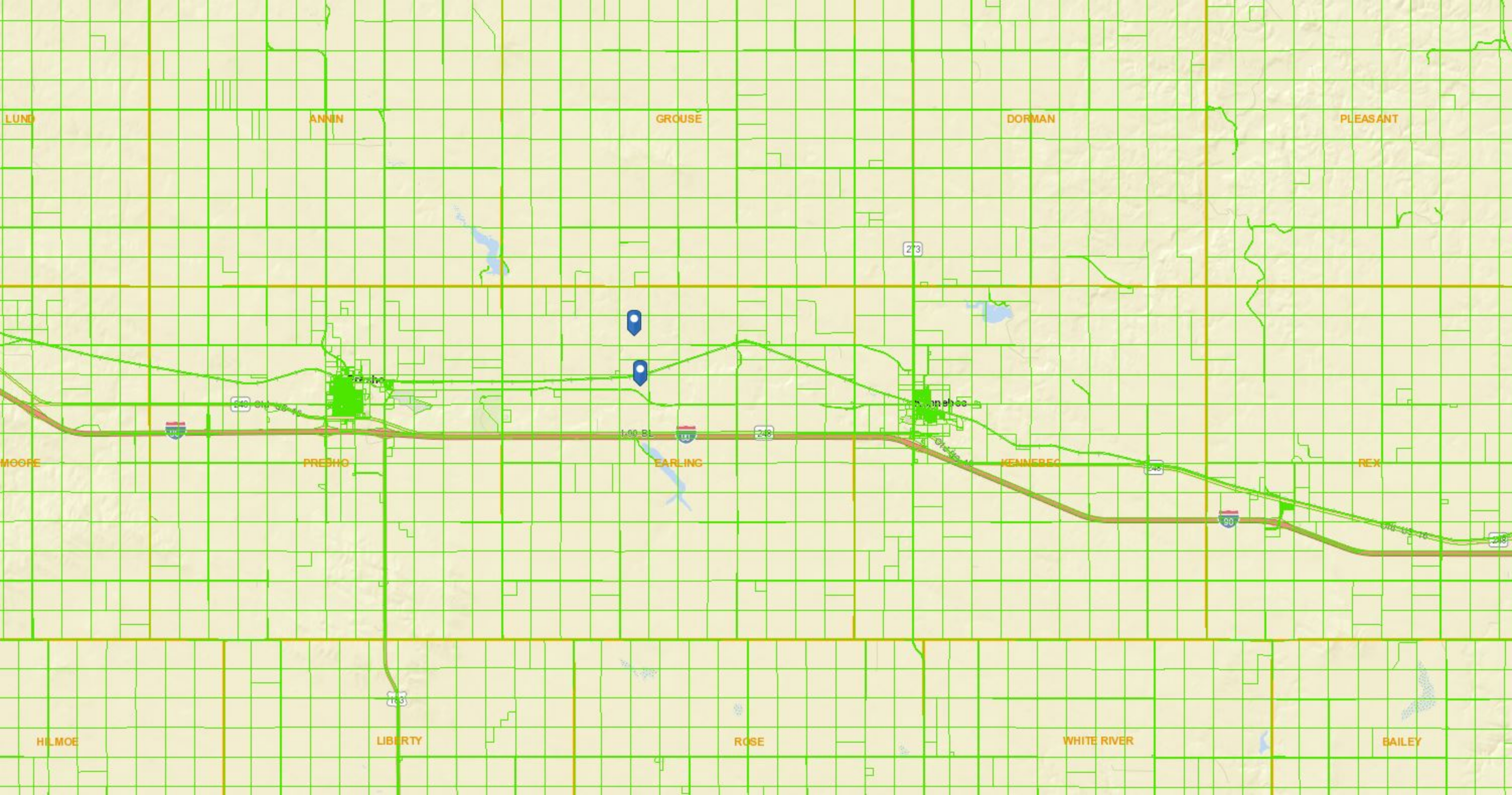


T 105 N

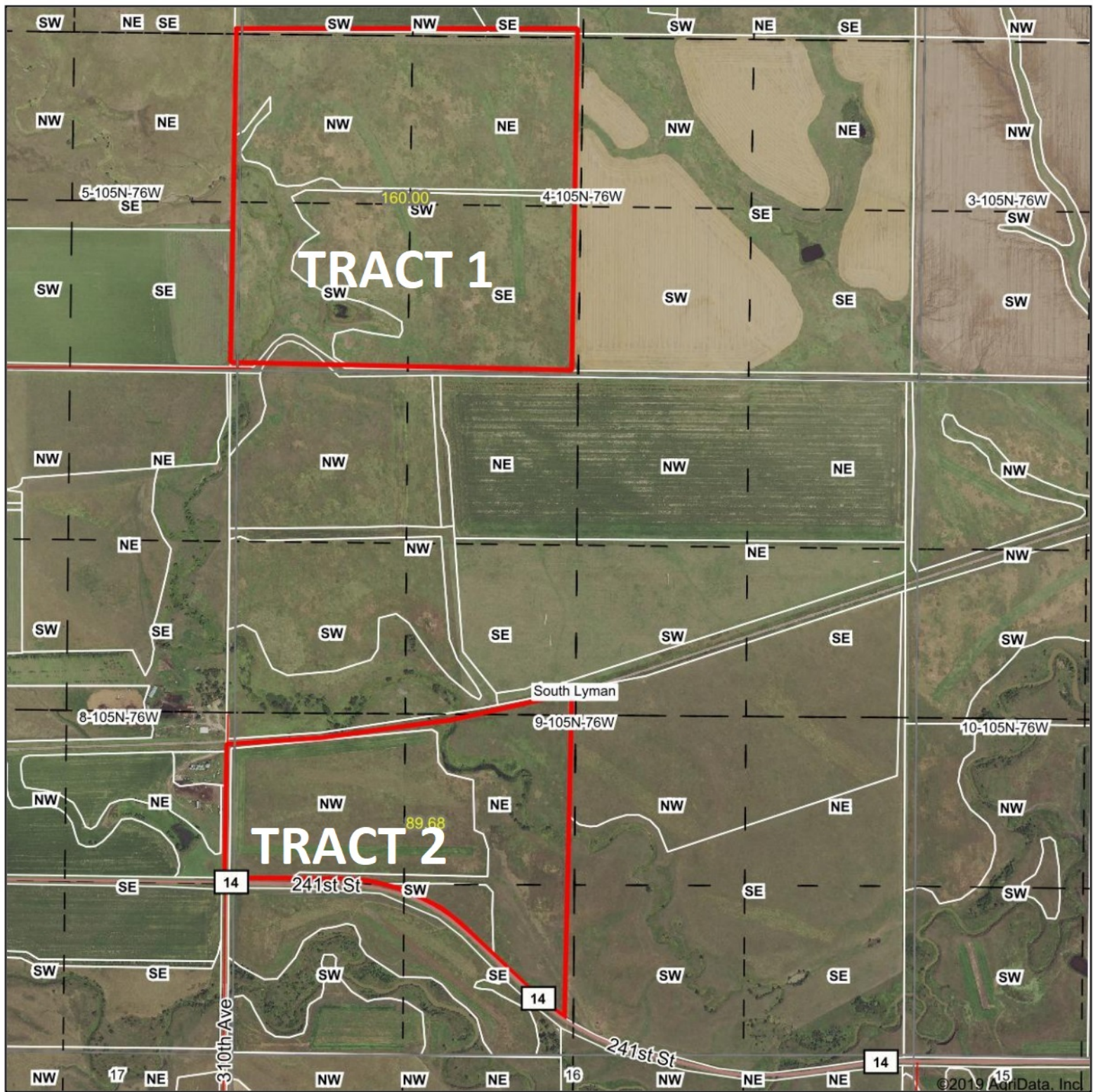
R 76 W

JOINS GROUSE TWP





Aerial Map



www.shippyrealty.com

**SHIPPY
REALTY**

Winner, SD 605842-3212

Maps Provided By:

surety
CUSTOMIZED ONLINE MAPPING

© AgriData, Inc. 2019

www.AgrIDataInc.com

Map Center: 43° 54' 57.63, -99° 57' 22.84

0ft 1207ft 2415ft

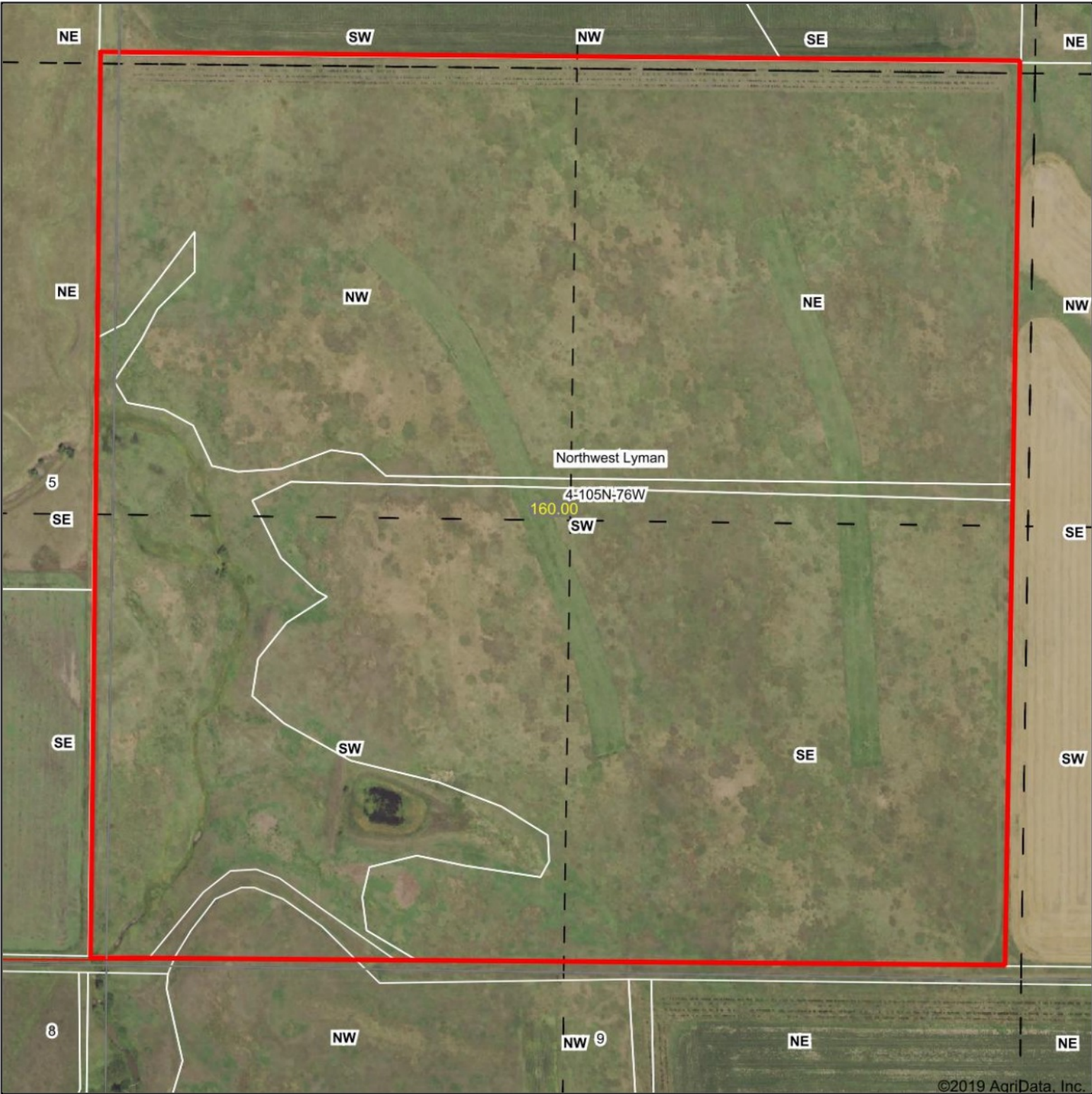
**9-105N-76W
Lyman County
South Dakota**



11/7/2019

Field borders provided by Farm Service Agency as of 5/21/2008.

Aerial Map



www.shippyrealty.com

**SHIPPY
REALTY**

Winner, SD 605842•3212

Maps Provided By:

surety
CUSTOMIZED ONLINE MAPPING

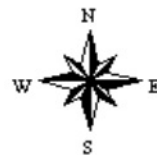
© AgriData, Inc. 2019

www.AgriDataInc.com

Map Center: 43° 55' 23.16, -99° 57' 38.83

0ft 453ft 906ft

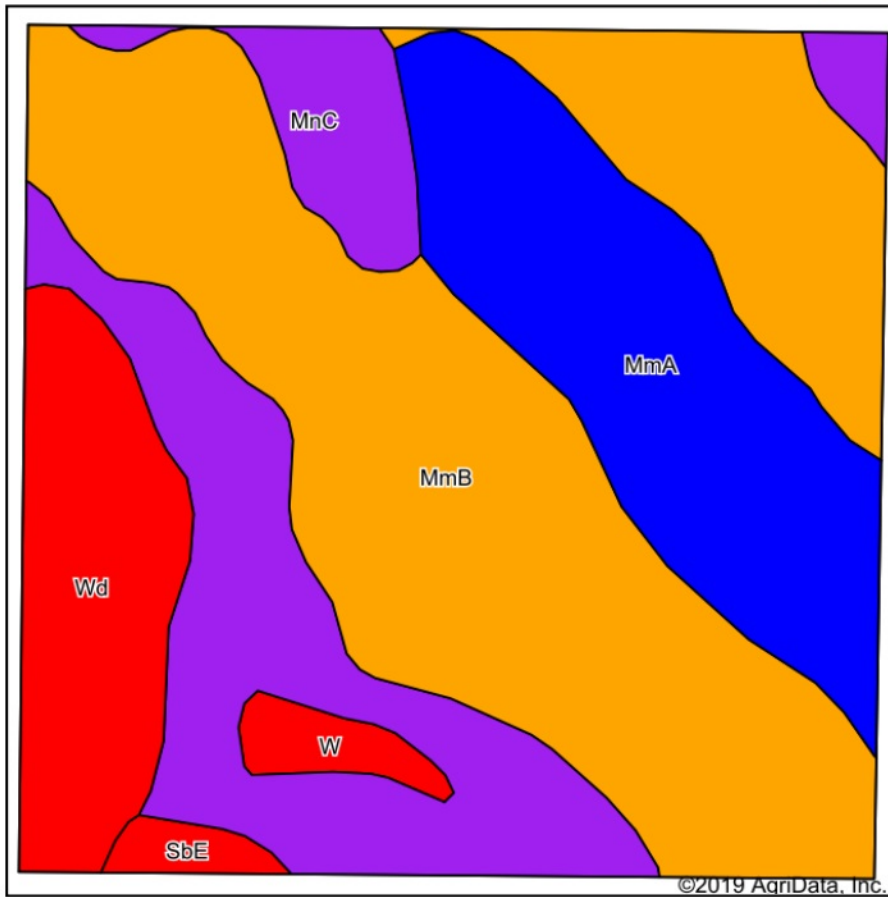
**4-105N-76W
Lyman County
South Dakota**



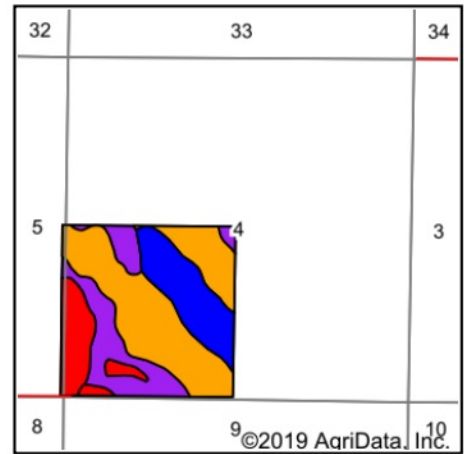
11/7/2019

Field borders provided by Farm Service Agency as of 5/21/2008.

Soils Map



Soils data provided by USDA and NRCS.



State: **South Dakota**
 County: **Lyman**
 Location: **4-105N-76W**
 Township: **Northwest Lyman**
 Acres: **160**
 Date: **11/7/2019**



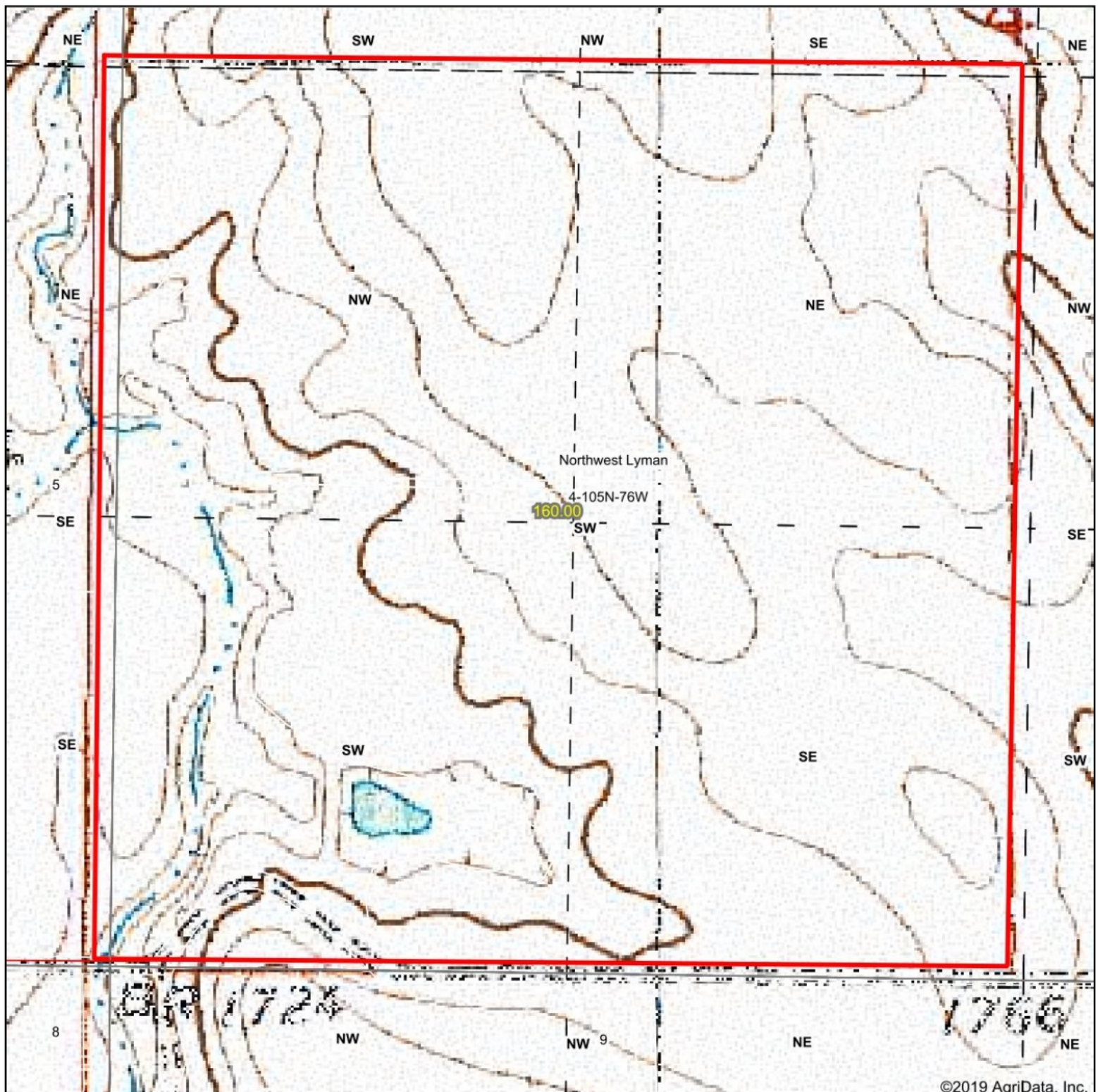
Maps Provided By:



Area Symbol: SD085, Soil Area Version: 20								
Code	Soil Description	Acres	Percent of field	PI Legend	Non-Irr Class *c	Irr Class *c	Productivity Index	Tall wheatgrass
MmB	Millboro silty clay, 3 to 6 percent slopes	73.35	45.8%		IIIe	IIIe	79	
MnC	Boro-Millboro silty clays, 6 to 9 percent slopes	34.40	21.5%		IVe	IVe	56	
MmA	Millboro silty clay, 0 to 3 percent slopes	30.96	19.4%		IIs	IIs	86	
Wd	Wendte silty clay, channeled	17.03	10.6%		VIw		33	2.5
W	Water	2.59	1.6%		VIII		0	
SbE	Sansarc-Opal clays, 9 to 25 percent slopes	1.67	1.0%		VIIe	VIIe	21	
Weighted Average							68.6	0.3

*c: Using Capabilities Class Dominant Condition Aggregation Method
 Soils data provided by USDA and NRCS.

Topography Map



©2019 AgriData, Inc.

www.shippyrealty.com

map center: 43° 55' 23.16, -99° 57' 38.83

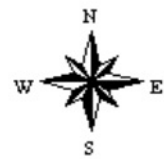
0ft 453ft 906ft

SHIPPY REALTY
Winner, SD 605842-3212

Maps Provided By:

surety
CUSTOMIZED ONLINE MAPPING
© AgriData, Inc. 2019 www.AgriDataInc.com

4-105N-76W
Lyman County
South Dakota



11/7/2019

Field borders provided by Farm Service Agency as of 5/21/2008.

Aerial Map



©2019 AgriData, Inc.

www.shippyrealty.com

**SHIPPY
REALTY**

Winner, SD 605842-3212

Maps Provided By:



surety
CUSTOMIZED ONLINE MAPPING

© AgriData, Inc. 2019

www.AgriDataInc.com

Map Center: 43° 54' 43.71, -99° 57' 20.71

0ft 837ft 1673ft

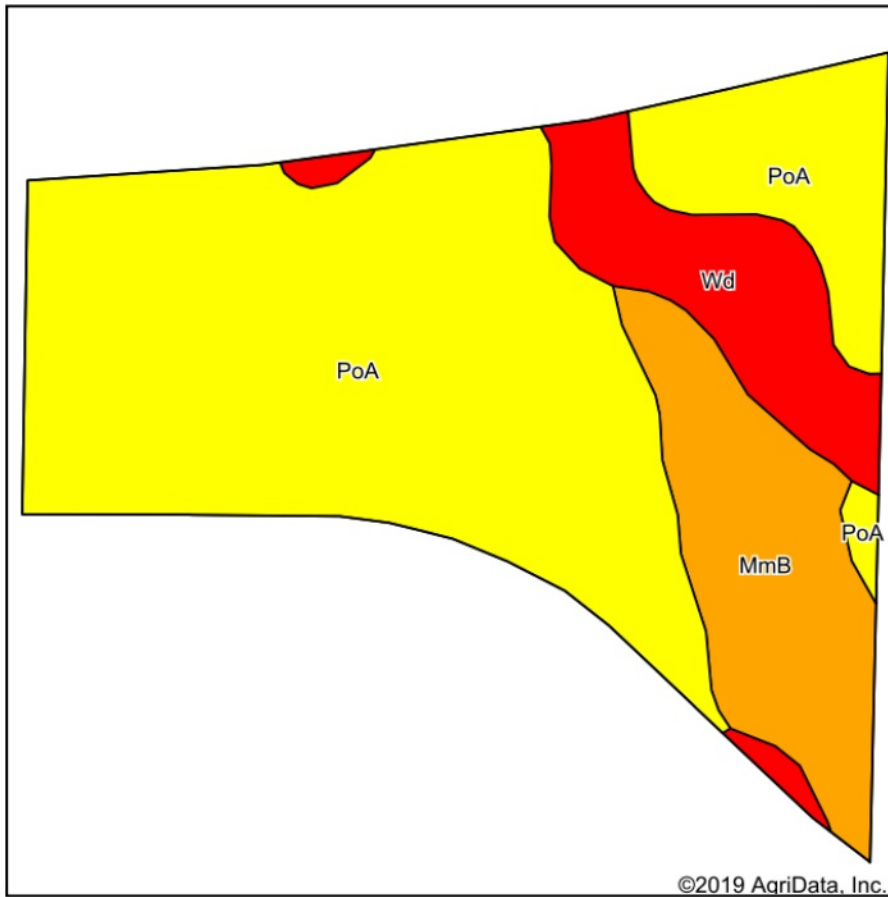
**9-105N-76W
Lyman County
South Dakota**



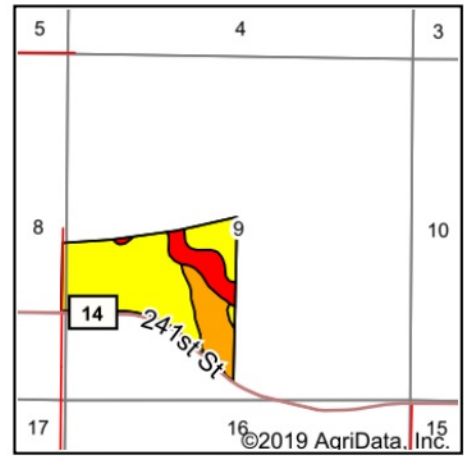
11/7/2019

Field borders provided by Farm Service Agency as of 5/21/2008.

Soils Map



Soils data provided by USDA and NRCS.



State: **South Dakota**
 County: **Lyman**
 Location: **9-105N-76W**
 Township: **South Lyman**
 Acres: **89.68**
 Date: **11/7/2019**



Maps Provided By:



Area Symbol: SD085, Soil Area Version: 20

Code	Soil Description	Acres	Percent of field	PI Legend	Non-Irr Class *c	Irr Class *c	Productivity Index	Tall wheatgrass
PoA	Promise clay, 0 to 3 percent slopes	62.38	69.6%		IIIIs	IIIIs	68	
MmB	Millboro silty clay, 3 to 6 percent slopes	15.54	17.3%		IIIe	IIIe	79	
Wd	Wendte silty clay, channeled	11.76	13.1%		VIW		33	2.5
Weighted Average							65.3	0.3

*c: Using Capabilities Class Dominant Condition Aggregation Method
 Soils data provided by USDA and NRCS.

Topography Map



©2019 AgriData, Inc.

www.shippyrealty.com

**SHIPPY
REALTY**

Winner, SD 805842-3212

Maps Provided By:

 **surety**
CUSTOMIZED ONLINE MAPPING

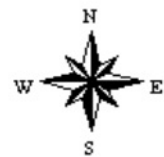
© AgriData, Inc. 2019

www.AgriDataInc.com

map center: 43° 54' 43.71", -99° 57' 20.71"

0ft 837ft 1673ft

9-105N-76W
Lyman County
South Dakota



11/7/2019

Field borders provided by Farm Service Agency as of 5/21/2008.