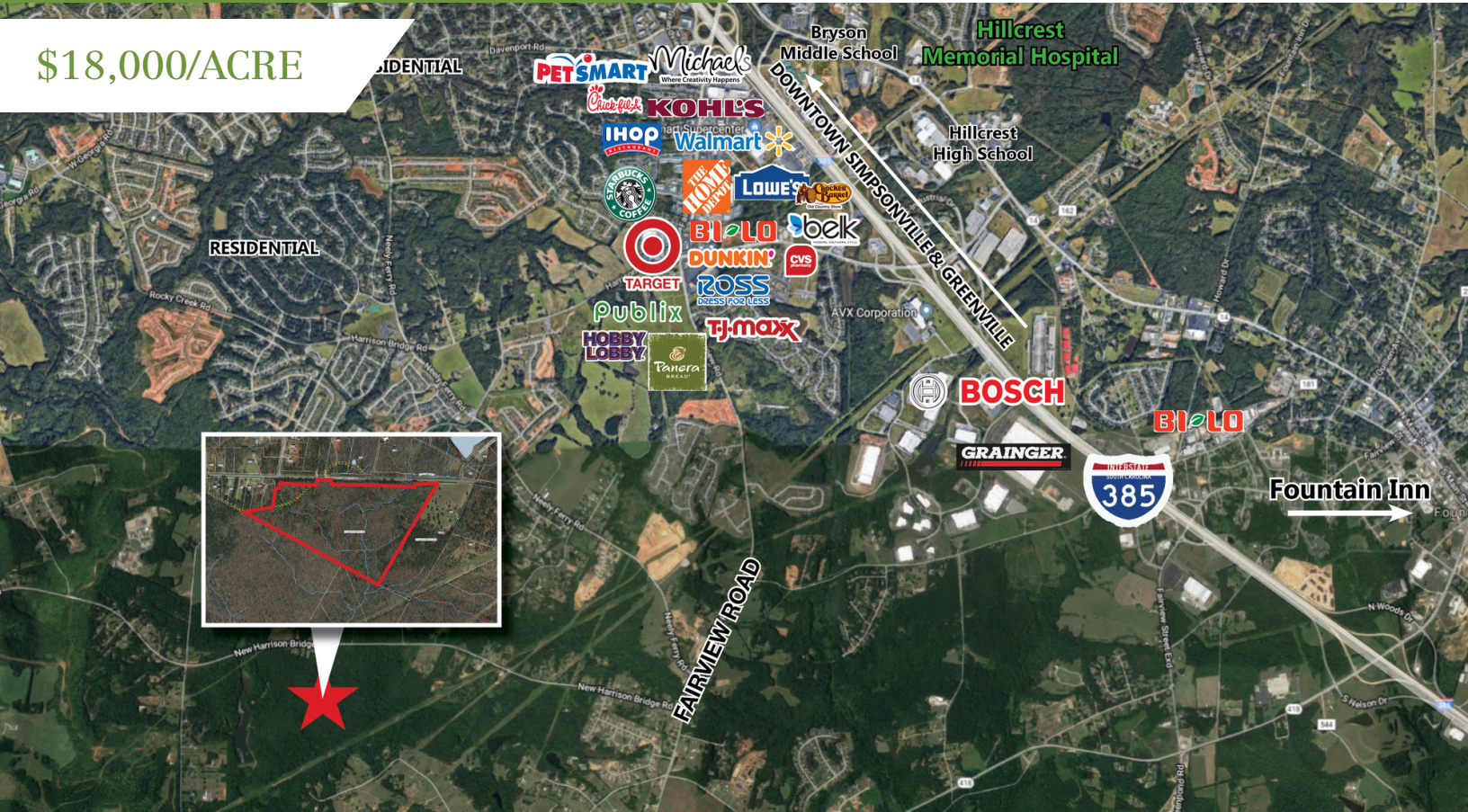


Residential Development

00 New Harrison Bridge Road Simpsonville, SC 29680



\$18,000/ACRE



New Harrison Bridge Road Simpsonville, SC

- 48± acres of raw land
- Greenville County Tax Map Number 0575020100601
- R-S Zoning
- 20± minutes from downtown Greenville
- Close proximity to major retail on Fairview Rd
- Approximately 2 miles from the city limits of Simpsonville
- All utilities available except sewer
- 2,100± feet of frontage on New Harrison Bridge Rd
- Level topography
- Excellent location near Fairview Road, I-385, Downtown Simpsonville and Greenville



Tripp Taylor
+1 336 260 5523
ttaylor@naiearlefurman.com

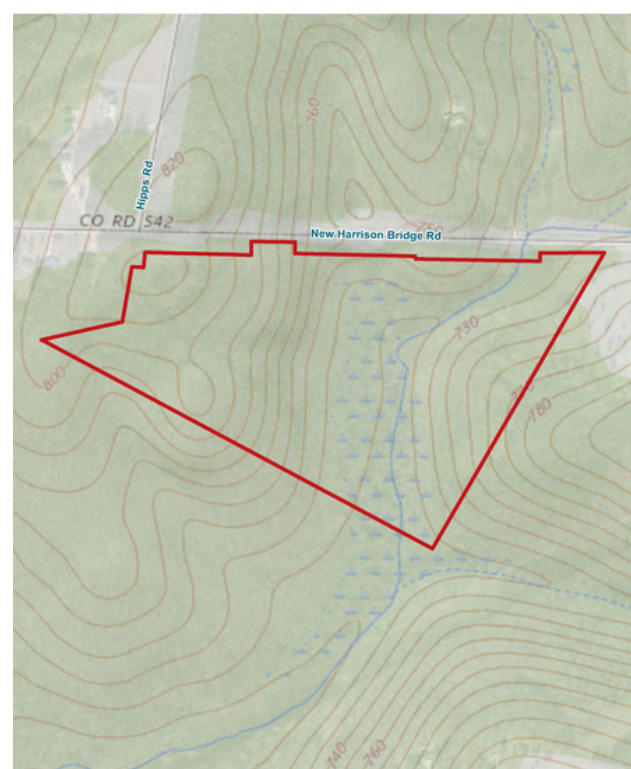
No Warranty Or Representation, Express Or Implied, Is Made As To The Accuracy Of The Information Contained Herein. And The Same Is Submitted Subject To Errors, Omissions, Change Of Price, Rental Or Other Conditions, Prior Sale, Lease Or Financing, Or Withdrawal Without Notice, And Of Any Special Listing Conditions Imposed By Our Principals No Warranties Or Representations Are Made As To The Condition Of The Property Or Any Hazards Contained Therein Are Any To Be Implied.



101 E Washington St
Greenville, SC 29601
naief.com

Map Sets

00 New Harrison Bridge Road Simpsonville, SC 29680



Tripp Taylor
+1 336 260 5523
ttaylor@naiearlefurman.com

No Warranty Or Representation, Express Or Implied, Is Made As To The Accuracy Of The Information Contained Herein, And The Same Is Submitted Subject To Errors, Omissions, Change Of Price, Rental Or Other Conditions, Prior Sale, Lease Or Financing, Or Withdrawal Without Notice, And Of Any Special Listing Conditions Imposed By Our Principals No Warranties Or Rep- resentations Are Made As To The Condition Of The Property Or Any Hazards Contained Therein Are Any To Be Implied.

