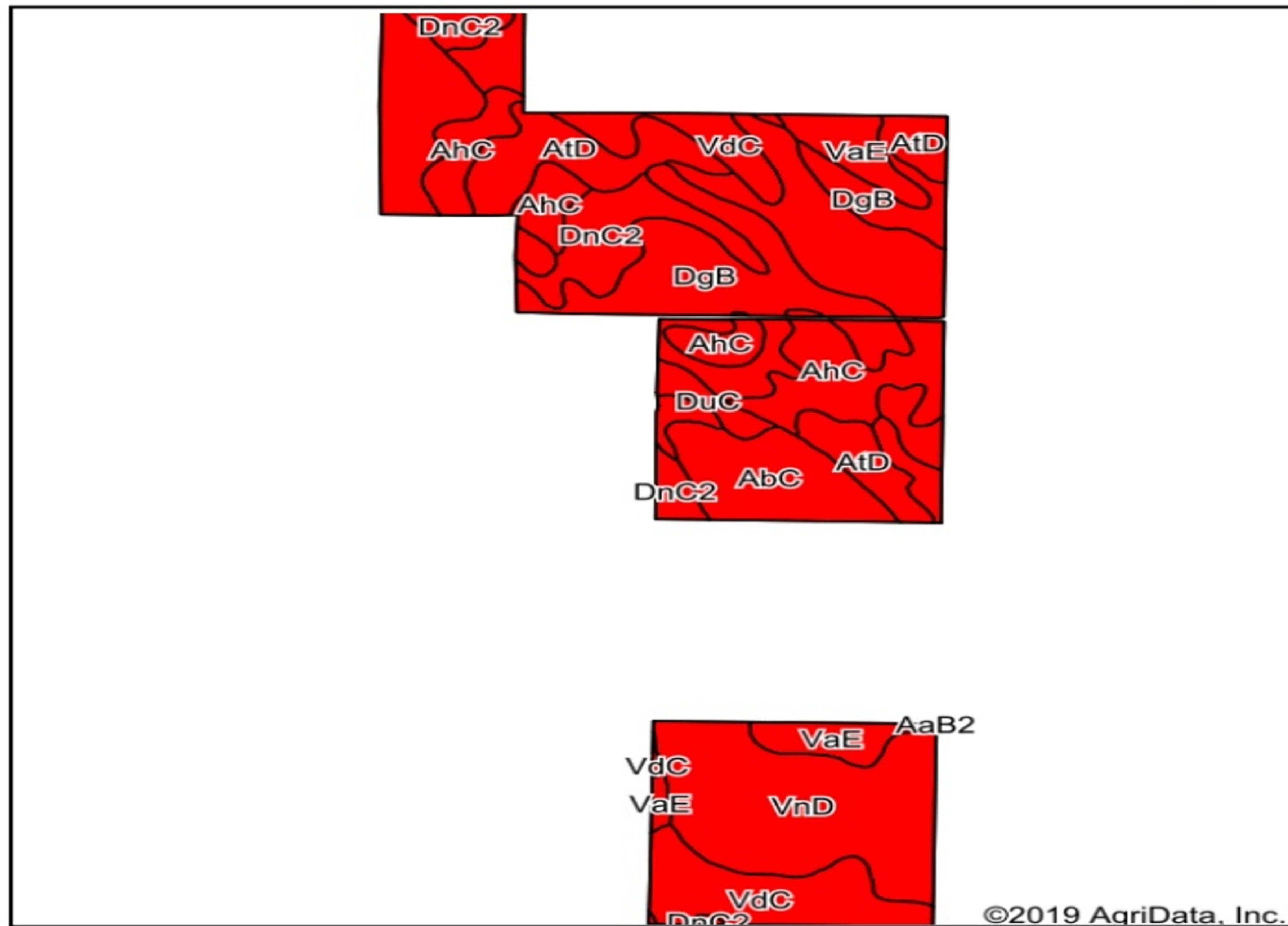
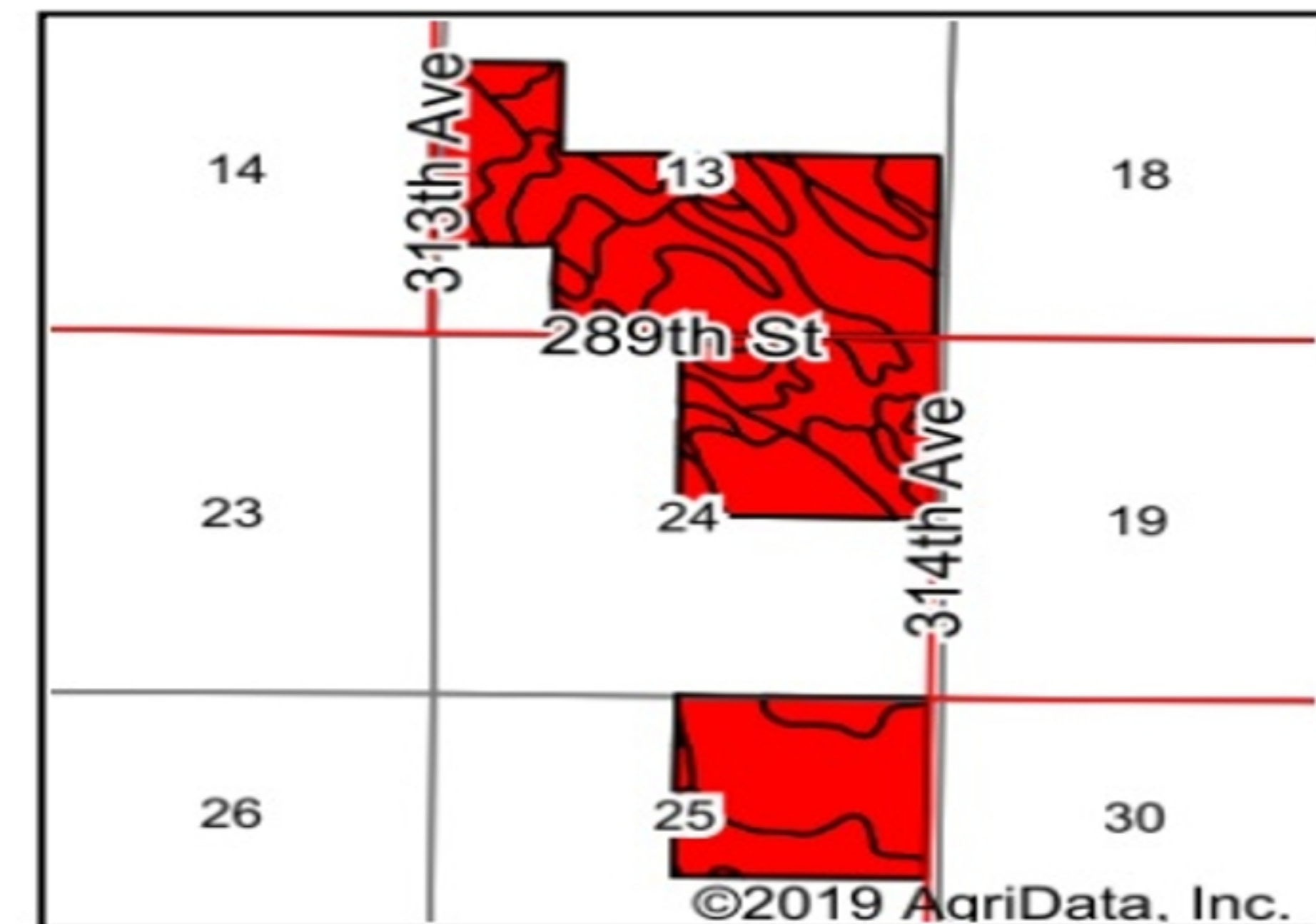


## Soils Map



Soils data provided by USDA and NRCS.



State: **South Dakota**  
 County: **Tripp**  
 Location: **24-97N-77W**  
 Township: **Dog Ear**  
 Acres: **640**  
 Date: **11/18/2019**



Maps Provided By:



Area Symbol: SD123, Soil Area Version: 20

Code	Soil Description	Acres	Percent of field	PI Legend	Non-Irr Class *c	Irr Class *c	Productivity Index	Alfalfa hay Irrigated	Alfalfa hay	Corn Irrigated	Corn	Grain sorghum	Grain sorghum Irrigated	Grass hay	Oats	Tall wheatgrass	Winter wheat
DgB	Doger loamy fine sand, 0 to 6 percent slopes	139.33	21.8%		IVe		32		1.5		25				30	2.5	
AhC	Anselmo-Holt fine sandy loams, 3 to 9 percent slopes	123.64	19.3%		IIIe	IIIe	50	4.5	2.3	125	41	51	100		40		26
VnD	Valentine-Longpine complex, 6 to 15 percent slopes	99.69	15.6%		Vle		12										
VdC	Valentine-Dunday complex, 3 to 9 percent slopes	72.46	11.3%		Vle	IVe	24	3.2		80				0.4			
AtD	Anselmo-Longpine fine sandy loams, 10 to 20 percent slopes	68.89	10.8%		Vle	Vle	27	3									
AbC	Anselmo fine sandy loam, 6 to 11 percent slopes	48.78	7.6%		IVe	IVe	44										
DnC2	Dunday loamy fine sand, 3 to 9 percent slopes, eroded	46.64	7.3%		Vle	IVe	34	3		90			70				
VaE	Valentine fine sand, 9 to 25 percent slopes	32.46	5.1%		Vle		13										
DuC	Dunday-Doger loamy fine sands, 3 to 9 percent slopes	8.11	1.3%		Vle	IVe	33	3		90			70				
Weighted Average							31	1.8	0.8	40.9	13.4	9.9	25.3	*-	14.3	0.5	5

\*c: Using Capabilities Class Dominant Condition Aggregation Method  
 Soils data provided by USDA and NRCS.