

Warren County Iowa

Listing #14653



Steve Bruere: 515.222.1347
Steve@PeoplesCompany.com

Warren County, Iowa

Property Address: Walnut Drive in Norwalk, Iowa 50211

Price

\$1,000,000

Price/Acre

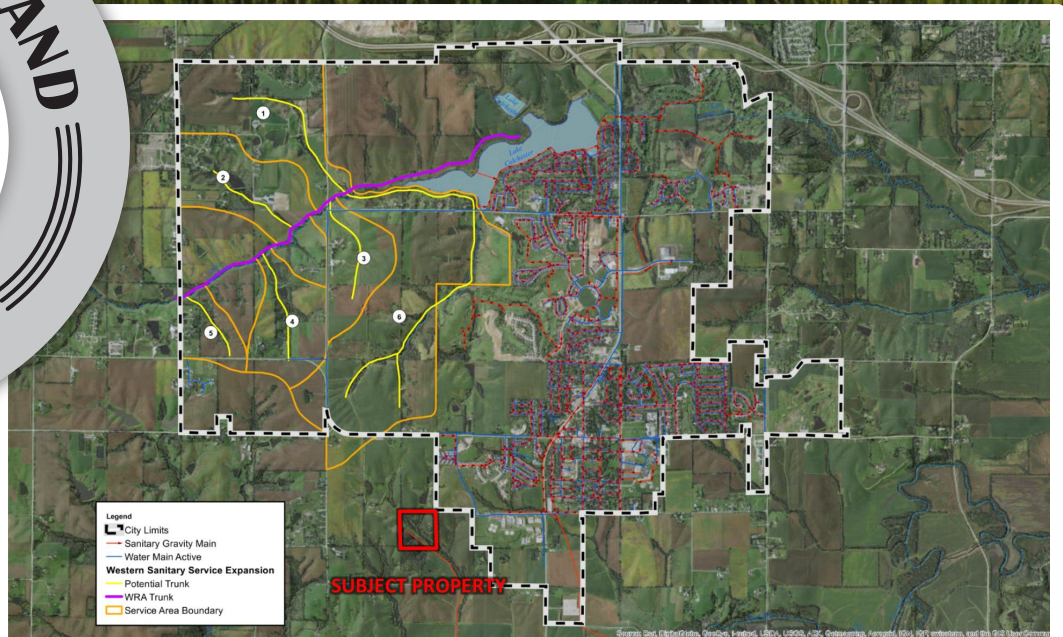
\$25,000

Net Taxes

\$584

About the Property

Peoples Company is proud to offer 40 acres m/l of prime development ground located on the southwest side of Norwalk, Iowa. The property is located next to a hot residential development area that is potent with parks and great neighborhoods. The rolling topography and green space of this property will allow for some attractive walkout, daylight, and flat lots with a great view. The future sewer line is planned to run through the property from the southeast corner to the northwest corner. Water and electricity are in close proximity to this property making it a nice development piece. The property is located on the southwest side of Norwalk in Section 23 of Linn Township in Warren County.

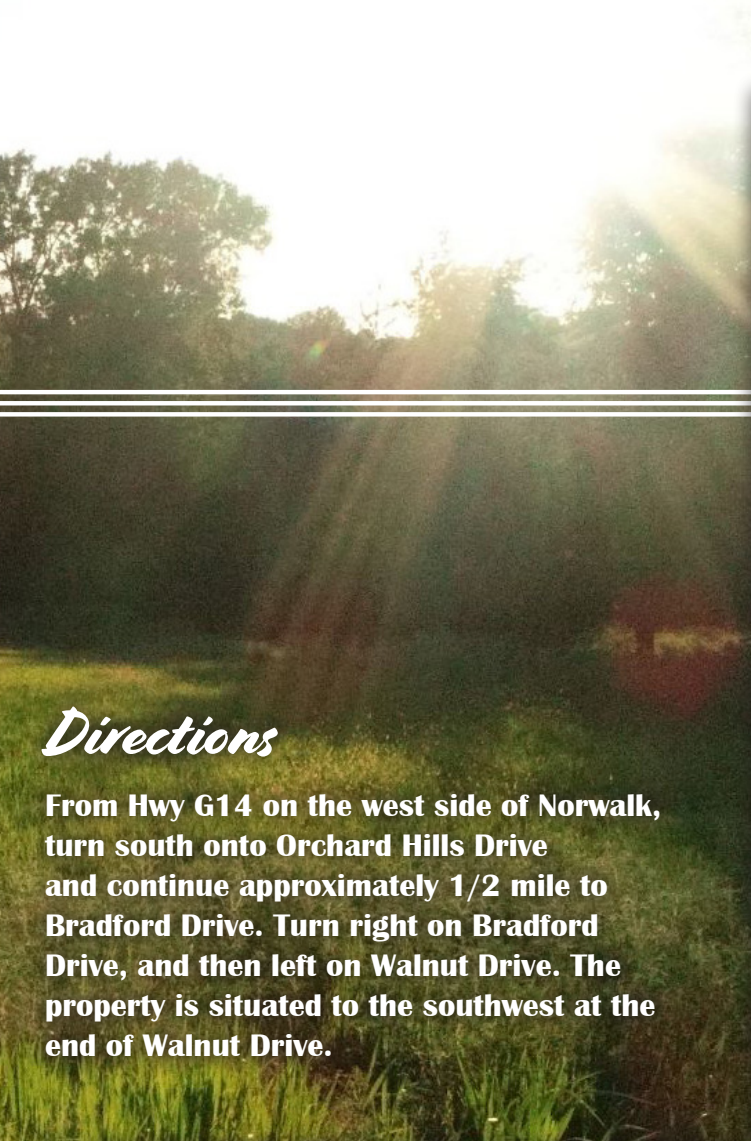


Steve Bruere

515.222.1347

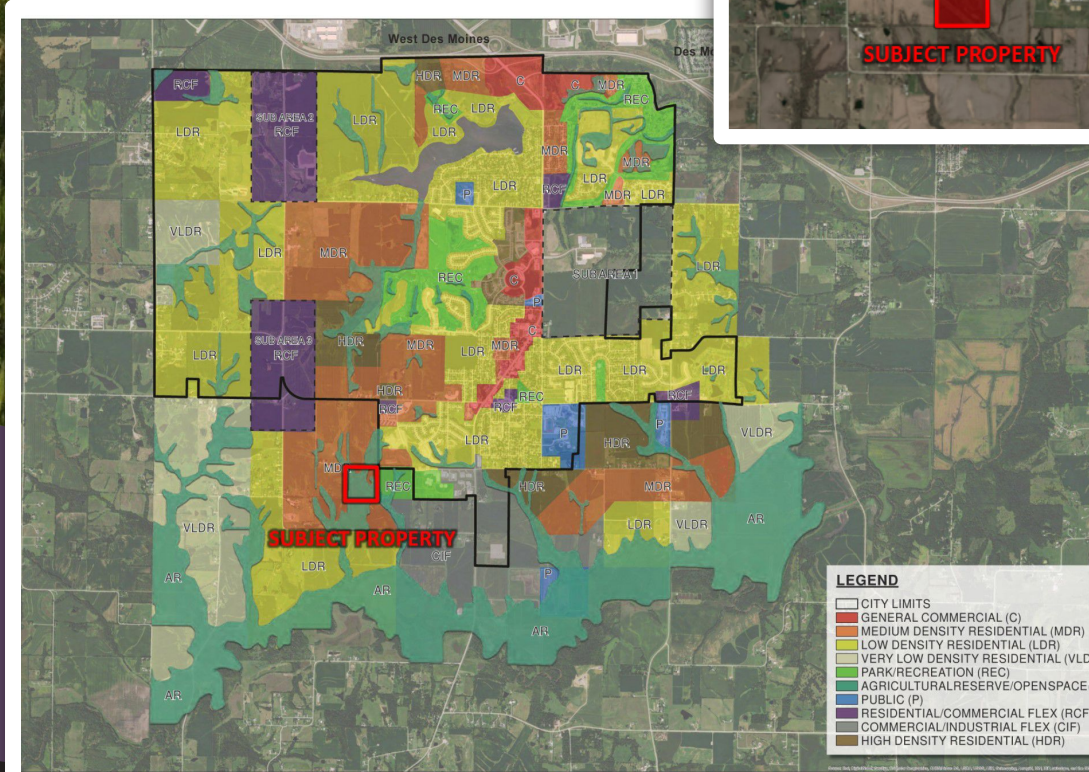
Steve@PeoplesCompany.com

City Utilities & West Expansion Map



Directions

From Hwy G14 on the west side of Norwalk, turn south onto Orchard Hills Drive and continue approximately 1/2 mile to Bradford Drive. Turn right on Bradford Drive, and then left on Walnut Drive. The property is situated to the southwest at the end of Walnut Drive.



Future Land Use Map



12119 Stratford Drive, Suite B
Clive, Iowa 50325
PeoplesCompany.com



**Warren
County,
Iowa** *Listing #14653*

