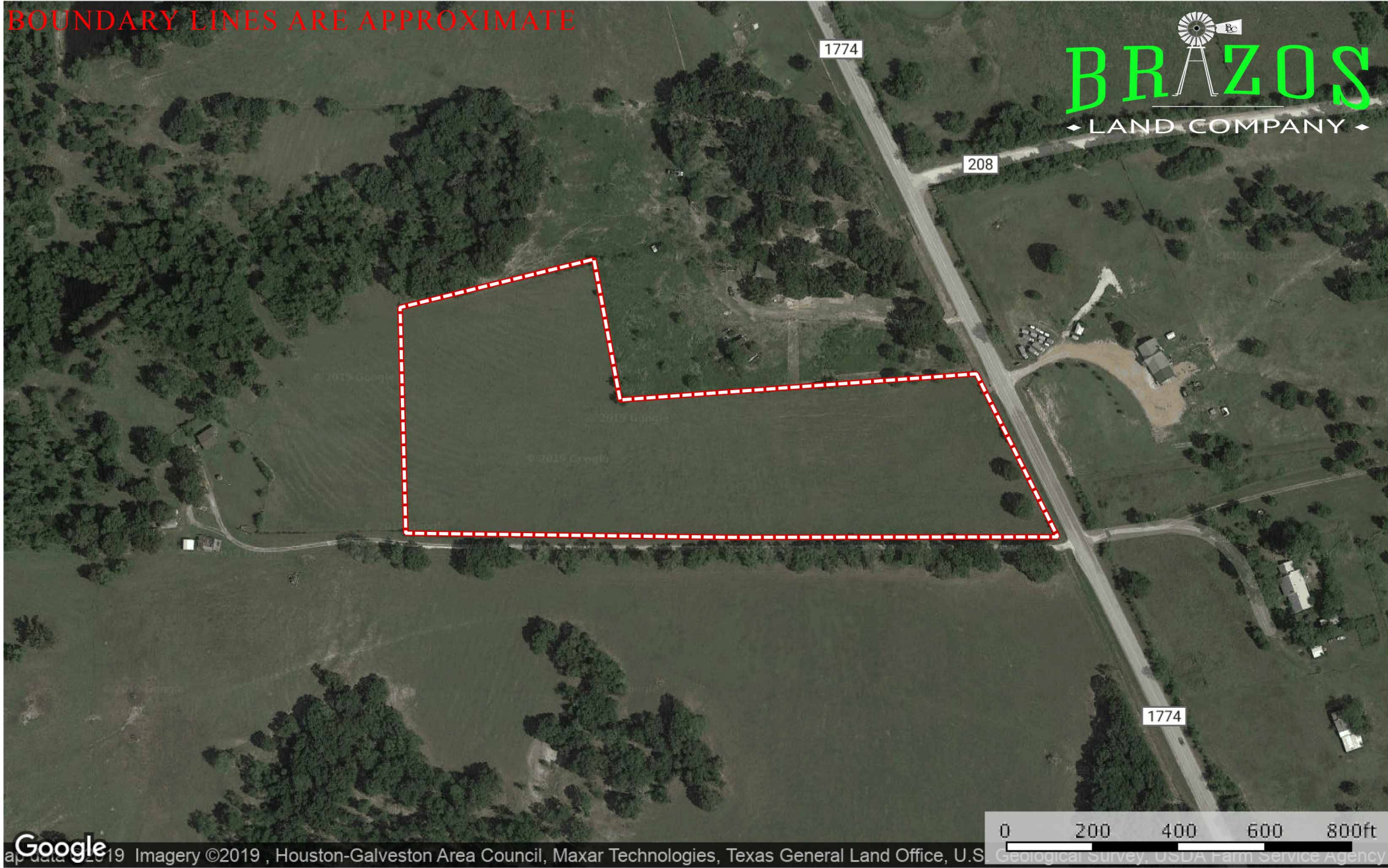


10+/- acres out of A0321 WM MC INTYRE, TRACT 17, ACRES
Grimes County, Texas, 10 AC +/-

BOUNDARY LINES ARE APPROXIMATE



Boundary



The information contained herein was obtained from sources deemed to be reliable. MapRight Services makes no warranties or guarantees as to the completeness or accuracy thereof.

10+/- acres out of A0321 WM MC INTYRE, TRACT 17, ACRES
Grimes County, Texas, 10 AC +/-

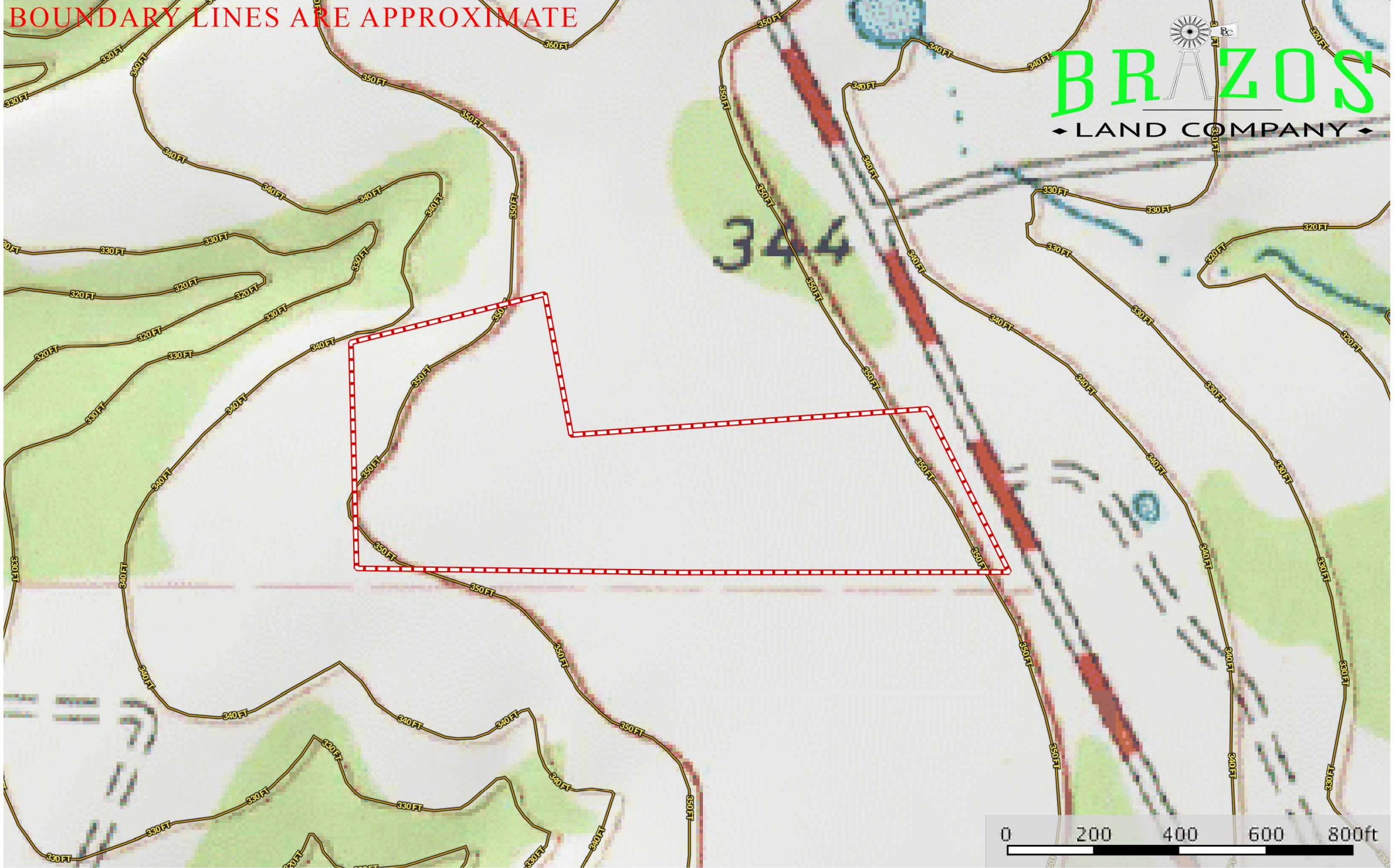
BOUNDARY LINES ARE APPROXIMATE



- Boundary
- 100 Year Floodplain
- 500 Year Floodplain
- Floodway
- Special
- Unmapped/ Not Included

10+/- acres out of A0321 WM MC INTYRE, TRACT 17, ACRES
Grimes County, Texas, 10 AC +/-

BOUNDARY LINES ARE APPROXIMATE



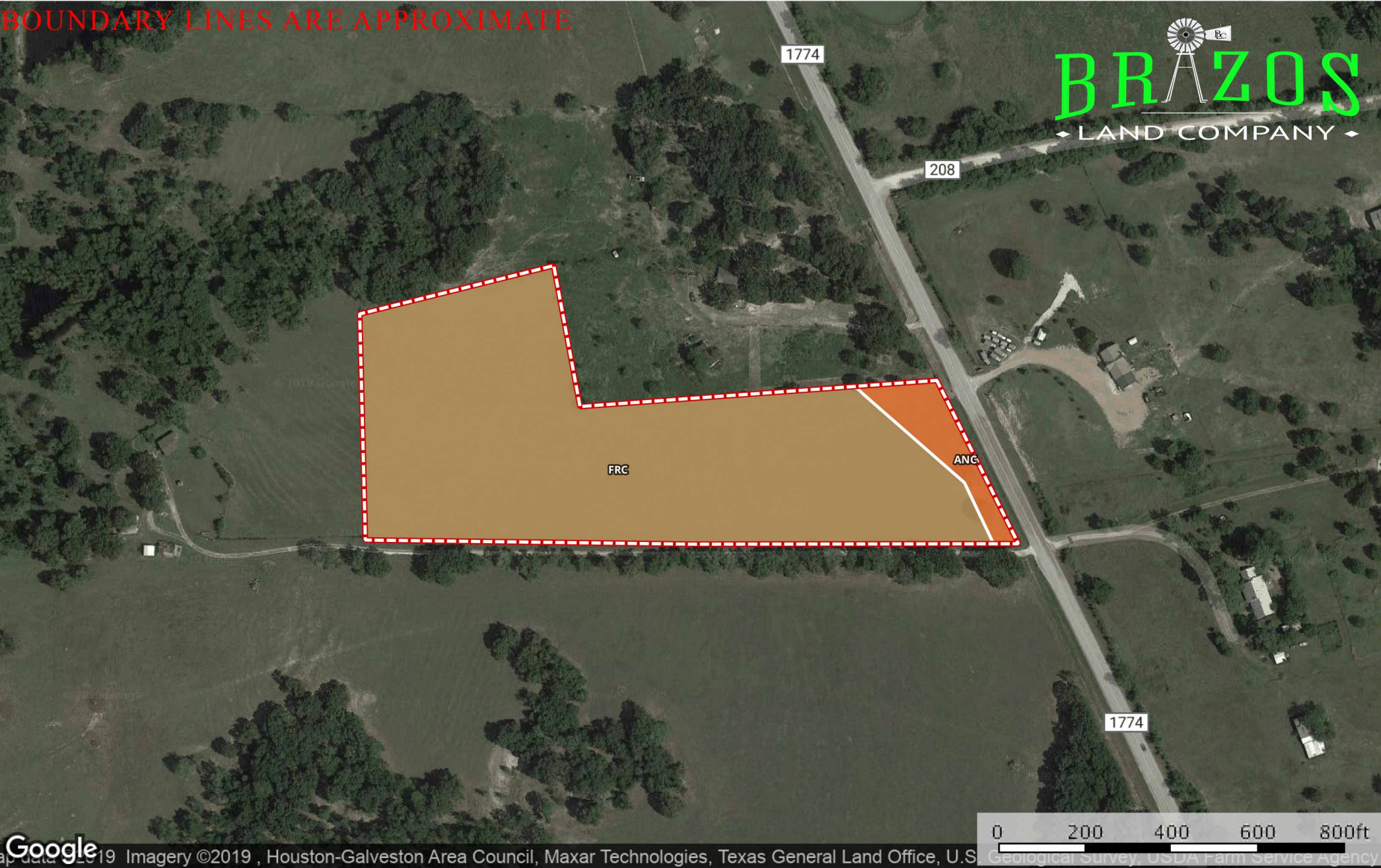
 Boundary



The information contained herein was obtained from sources deemed to be reliable. MapRight Services makes no warranties or guarantees as to the completeness or accuracy thereof.

10+/- acres out of A0321 WM MC INTYRE, TRACT 17, ACRES
Grimes County, Texas, 10 AC +/-

BOUNDARY LINES ARE APPROXIMATE



The information contained herein was obtained from sources deemed to be reliable. MapRight Services makes no warranties or guarantees as to the completeness or accuracy thereof.