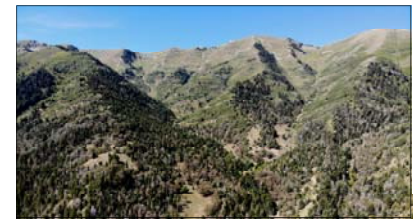
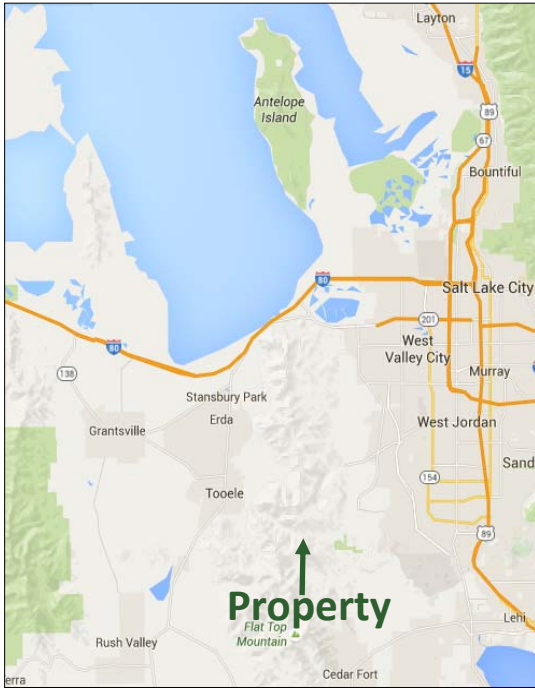


PRICE REDUCED

See more information at www.hciutah.com

West Canyon Land

444 acres in Utah County, Utah



EXECUTIVE SUMMARY:

List Price: \$310,930, \$700/Acre

Mike Nelson | Dan Nelson

801-482-7565 | mike@hciutah.com

Notice: This information is believed to be accurate, but no warranty is expressed or implied. Highland Commercial insists that interested parties conduct their own research and investigations. The property is offered subject to prior sale, price change, and withdrawal without notice. No obligations will be created unless a purchase contract is signed by both buyer and seller. We welcome the cooperation of participating brokers; please contact us for our commission-sharing policies. All images and materials are copyright protected and are the property of Highland Commercial.

- 444.185 acres in Utah County, Utah
- Zoned Mining & Grazing - 50-acre minimum lot size
- Key to the West Canyon gate but limited access to parcels
- Beautiful mountain property with 360° views
- Critical elk and deer habitat makes for great hunting
- Greenbelt taxes
- 5 miles from Kennecott Copper Mine
- 10 miles from Tooele City
- 10 miles from Cedar Fort
- 25 miles from Salt Lake City, Utah

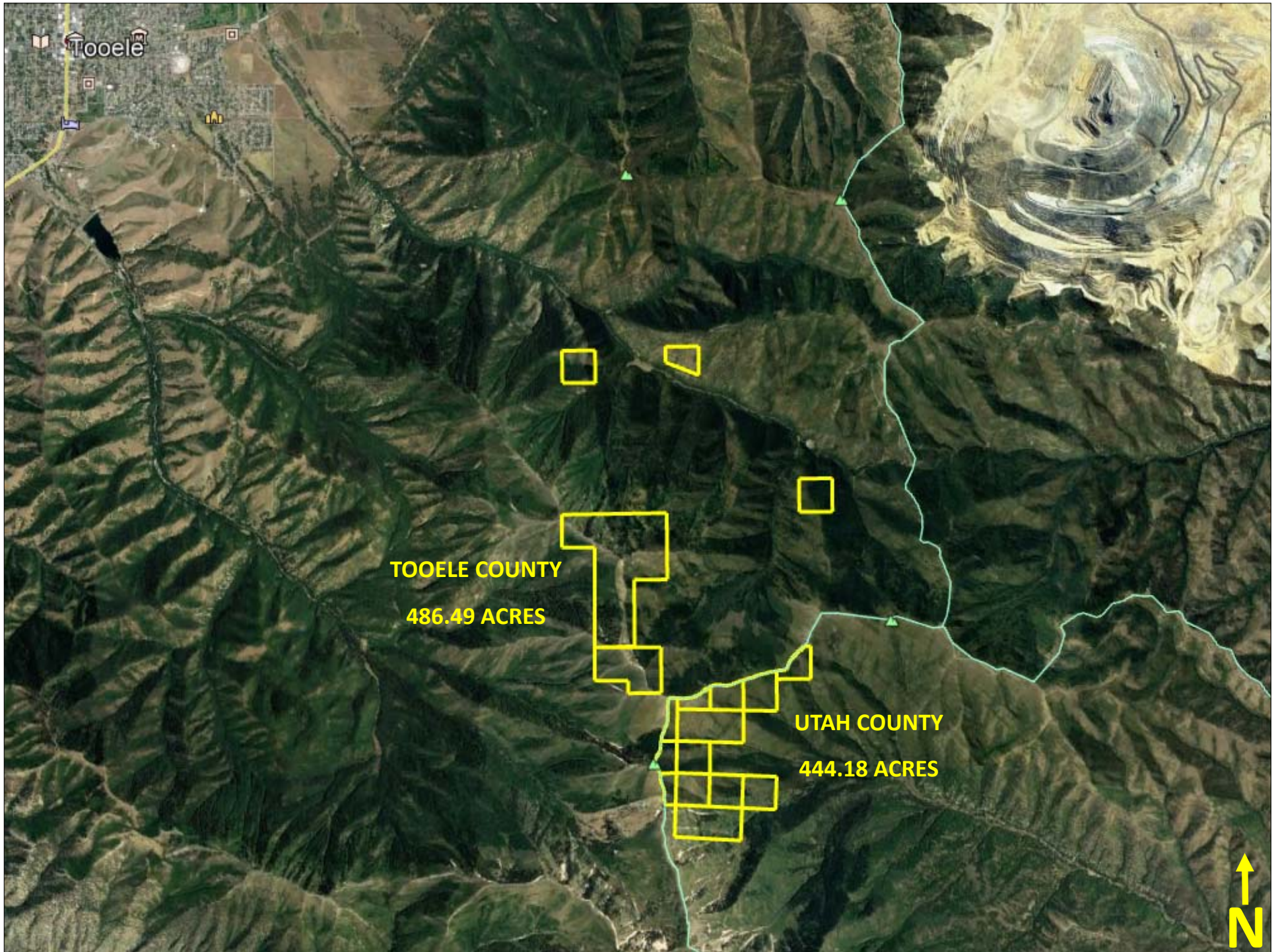


2733 East Parley's Way, Suite 304

Salt Lake City, UT 84109

801-487-6100

www.hciutah.com



TOOELE COUNTY
486.49 ACRES

UTAH COUNTY
444.18 ACRES

