



Northeast Missouri 5 +/- Acre Lot for Sale

Near Mark Twain Lake

T R O P H Y
PROPERTIES AND AUCTION
LAND | RECREATIONAL | RESIDENTIAL

www.TrophyPA.com • (855) 573-5263 • leads@trophyapa.com



PROPERTY ADDRESS:

41117 Double B Trail
Perry, MO 63462

PRICE: \$38,000

ACRES: 5

COUNTY: Ralls

PROPERTY HIGHLIGHTS:

- 5 +/- acres
- Secluded
- Close to Mark Twain Lake

PROPERTY DESCRIPTION:

Northeast Missouri 5 +/- acre building lot for sale is in the Double B Ranch subdivision. Ralls County, MO recreation property covers 5 secluded acres. Perry, MO vacation property is just 5 miles from Mark Twain Lake featuring access to Blackjack Marina and Ray Behrens Recreational Area.

Perry, MO is the Southern Gateway to Mark Twain Lake and over 18,000 acres of water recreation. Our rural northeast Missouri community features retail, commerce and industry. This area is also rich in history with the Mark Twain Birthplace Museum and Historic Site as well as Hannibal, MO among the notable sites.



PRESENTED BY:

JASON CHINN

Land & Home Specialist - MO

M: (660) 541-5058

P: (855) 573-5263 x708

E: jchinn@trophyapa.com

Trophy Properties and Auction

15480 Clayton Road

Suite 101

Ballwin, MO 63011

www.Trophyapa.com

leads@trophyapa.com

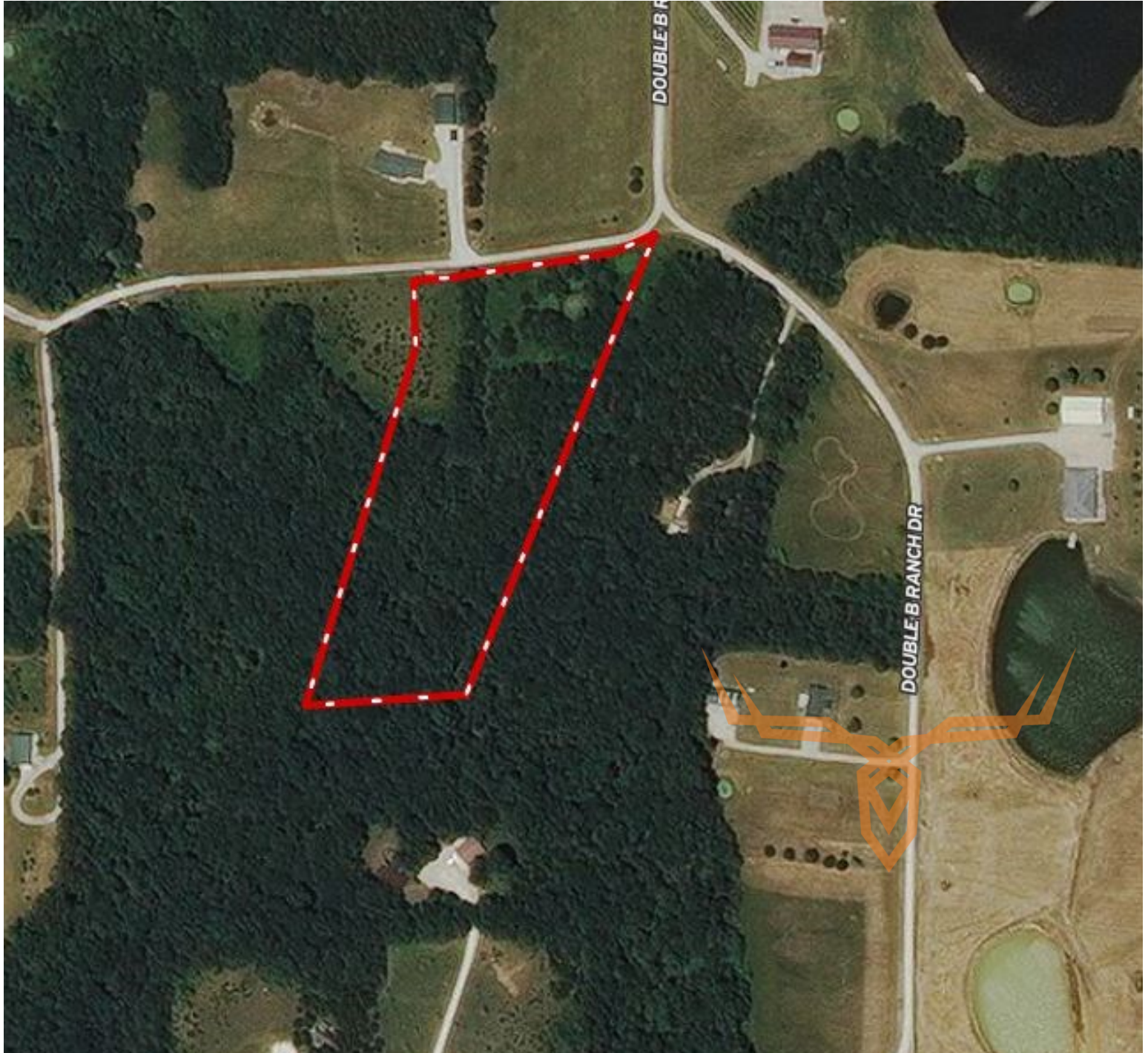


Northeast Missouri 5 +/- Acre Lot for Sale

Near Mark Twain Lake

T R O P H Y
PROPERTIES AND AUCTION
LAND | RECREATIONAL | RESIDENTIAL

www.TrophyPA.com • (855) 573-5263 • leads@trophy.com



Broker does not guarantee the accuracy of sq. ft., lot size, or other information, buyer is advised to independently verify the accuracy of information through personal inspection and with appropriate professionals