

1 field, 55 acres in Osage County, OK

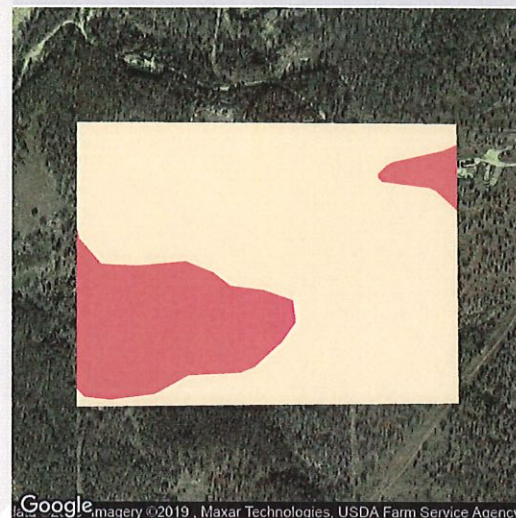
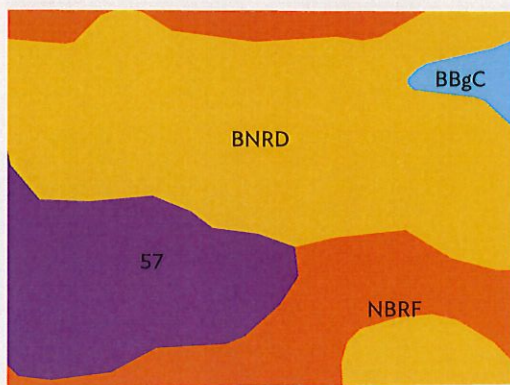
TOWNSHIP/SECTION 25N 11E - 29

AVG NCCPI

COUNTY AVG

14.8

38.3



Google Imagery ©2019, Maxar Technologies, USDA Farm Service Agency

Google

Map data ©2019

QUALITY 13 77

All fields

55 ac

Source: NRCS Soil Survey

SOIL CODE	SOIL DESCRIPTION	ACRES	PERCENTAGE OF FIELD	SOIL CLASS	NCCPI
BNRD	Bigheart-Niotaze-Rock outcrop complex, 1 to 8 percent slopes	30.15	55.0%	4	12.6
57	Steedman-Lucien complex, 3 to 15 percent slopes	11.90	21.7%	6	26.5
NBRF	Niotaze-Bigheart-Rock outcrop complex, 15 to 25 percent slopes, extremely stony	11.48	20.9%	7	7.3
BBgC	Bartlesville-Bigheart complex, 1 to 5 percent slopes, very rocky	1.31	2.4%	3	25.6
		54.83			14.8