

Greene Twp - St. Joseph County

For Sale

60.8^{+/-} Acres

59^{+/-} Wooded, 1.8^{+/-} Access Lane

Wooded Potential Building Site or Recreational Parcel

PROPERTY INFORMATION

LOCATION

60010 S. Mayflower Road
South Bend, IN 46614

60100 S. Mayflower Road
South Bend, IN 46614

ZONING

Residential

TOPOGRAPHY

Level

SCHOOL DISTRICT

South Bend

ANNUAL TAXES

\$597.56



Julie Matthys
574.310.5189
juliem@halderman.com



HALDERMAN

REAL ESTATE & FARM MANAGEMENT

HLS# JAM-12463 (19)

800.424.2324 | halderman.com



HALDERMAN

REAL ESTATE & FARM MANAGEMENT

PO Box 297

Wabash, IN 46992

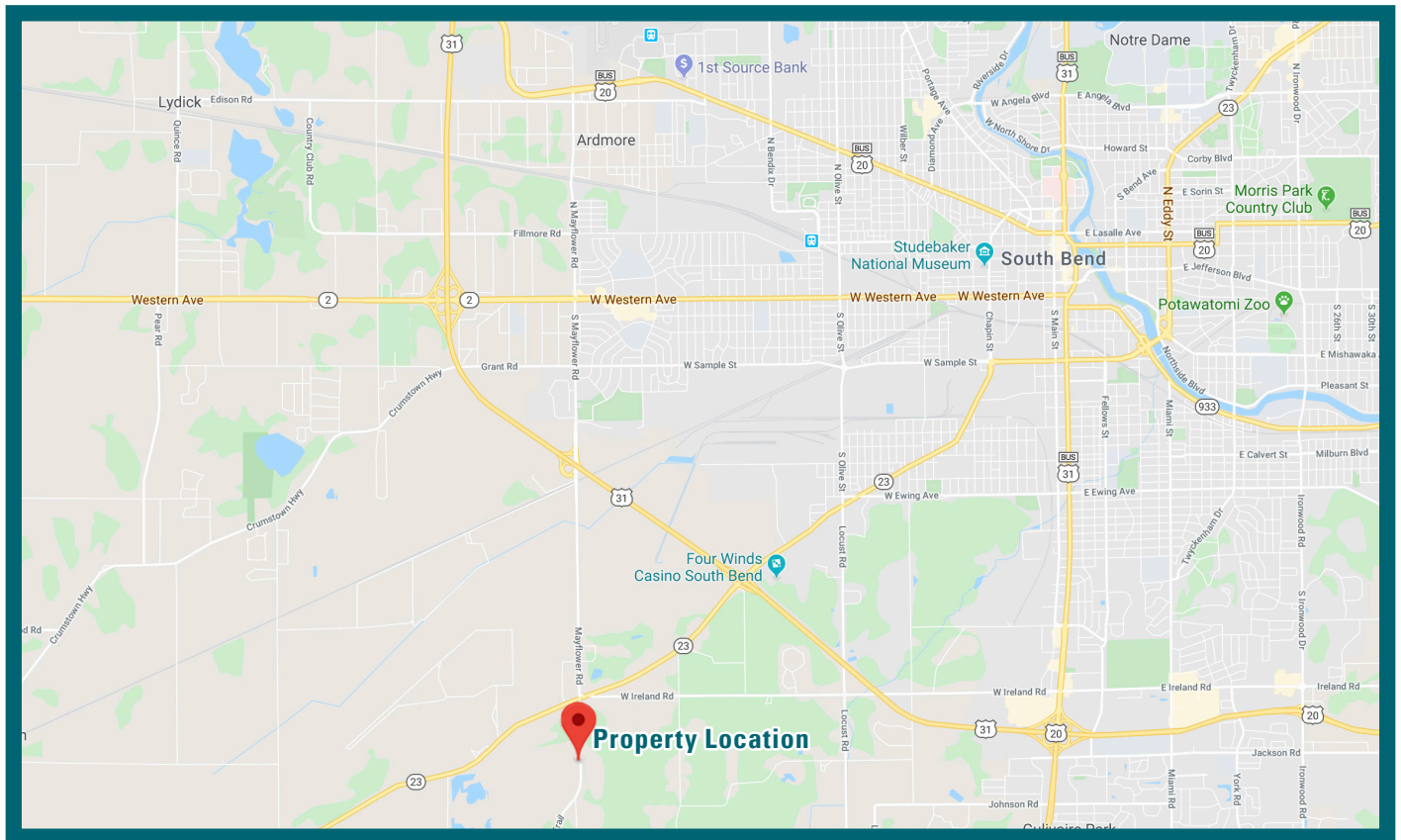
Greene Twp - St. Joseph County

For Sale

60.8^{+/-} Acres

59^{+/-} Wooded, 1.8^{+/-} Access Lane

Wooded Potential Building Site or Recreational Parcel



AGENCY & DISCLAIMER: Halderman Real Estate Services, Inc. (HRES) and their representatives are exclusive agents of the Sellers. All information herein and in related materials is deemed to be accurate to the best available knowledge, but cannot be warranted or guaranteed. All information is subject to verification by parties relying upon it, and no liability for its accuracy, errors, or omissions is assumed by the Sellers or HRES.



HRES IN Lic. #AC69200019