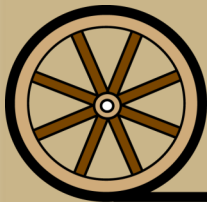


# ***D&L Pivots***

***Gandy, Logan County, Nebraska***



*Offered Exclusively By:*



**AGRI AFFILIATES, INC.**  
*Providing Farm - Ranch Real Estate Services*

Information contained herein was obtained from sources deemed reliable. We have no reason to doubt the accuracy, but the information is not guaranteed. Prospective Buyers should verify all information. All maps provided by Agri Affiliates, Inc. are approximations only, to be used as a general guideline, and not intended as survey accurate. As with any agricultural land, this property may include noxious weeds. Agri Affiliates, Inc. and all agents are acting as Agent of the Seller.

**NORTH PLATTE OFFICE**

P.O. Box 1166

I-80 & US Hwy 83

North Platte, NE 69103

[www.agriaffiliates.com](http://www.agriaffiliates.com)

**(308) 534-9240**

Fax (308) 534-9244



**Find us on  
Facebook**

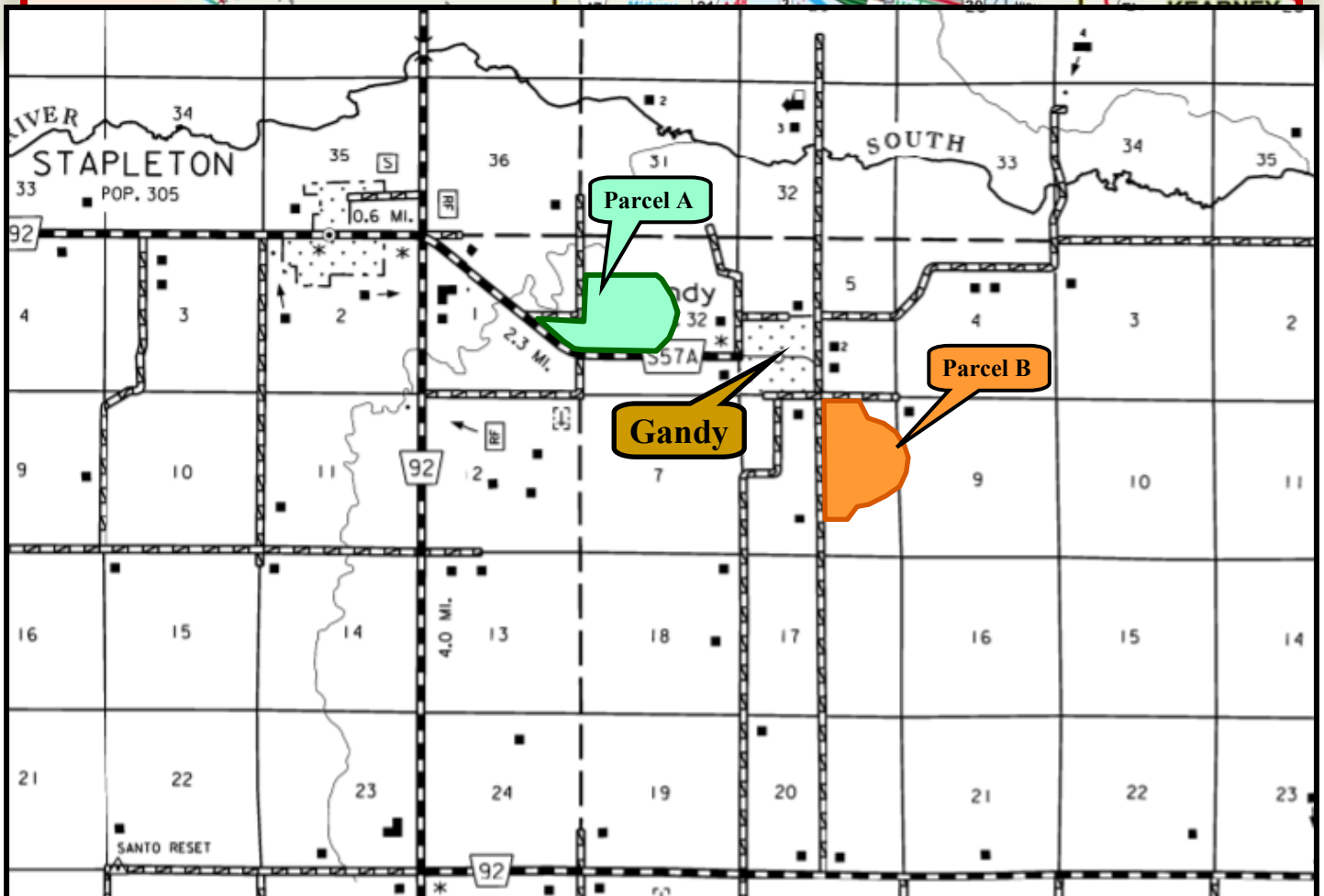
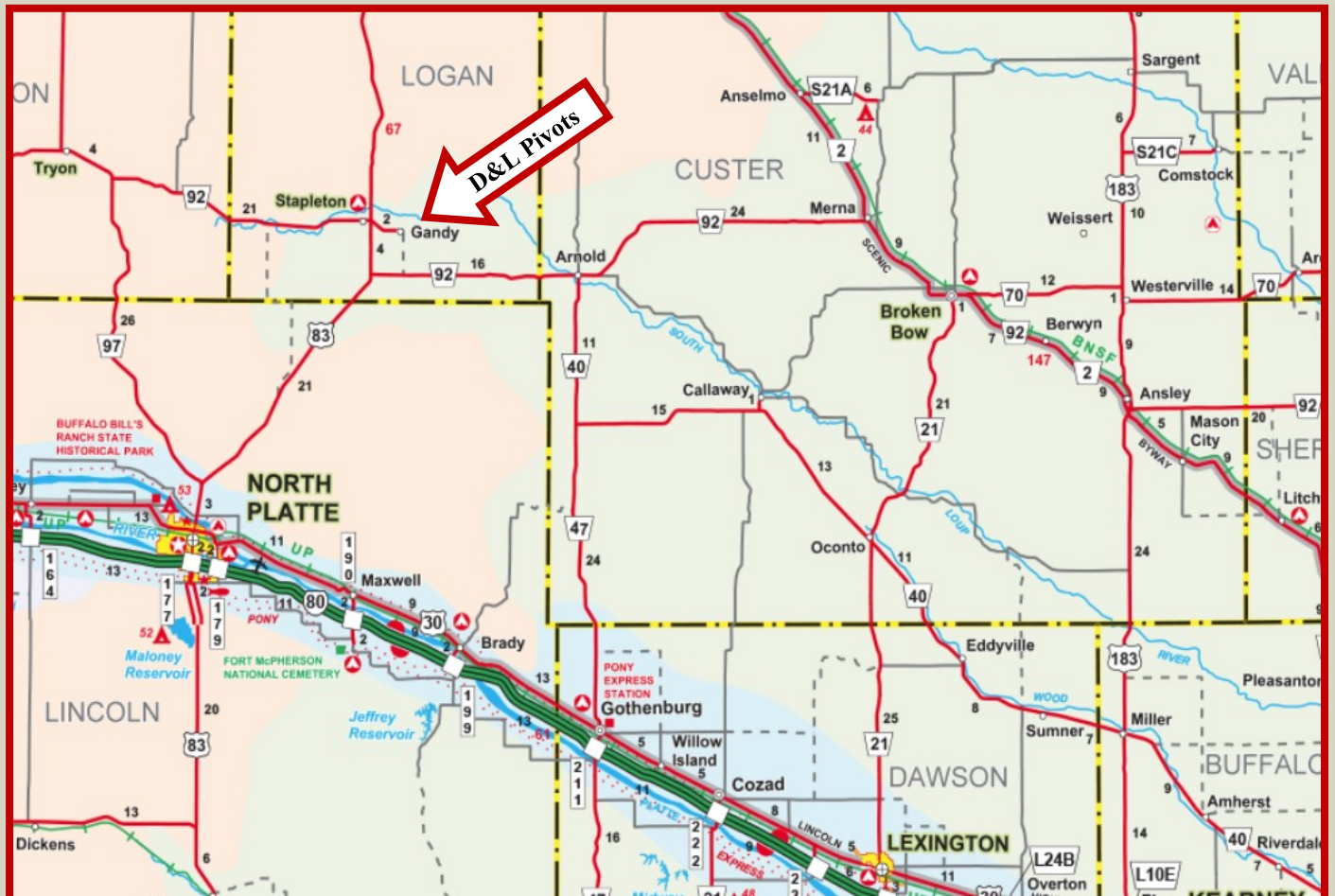
# D&L Pivots

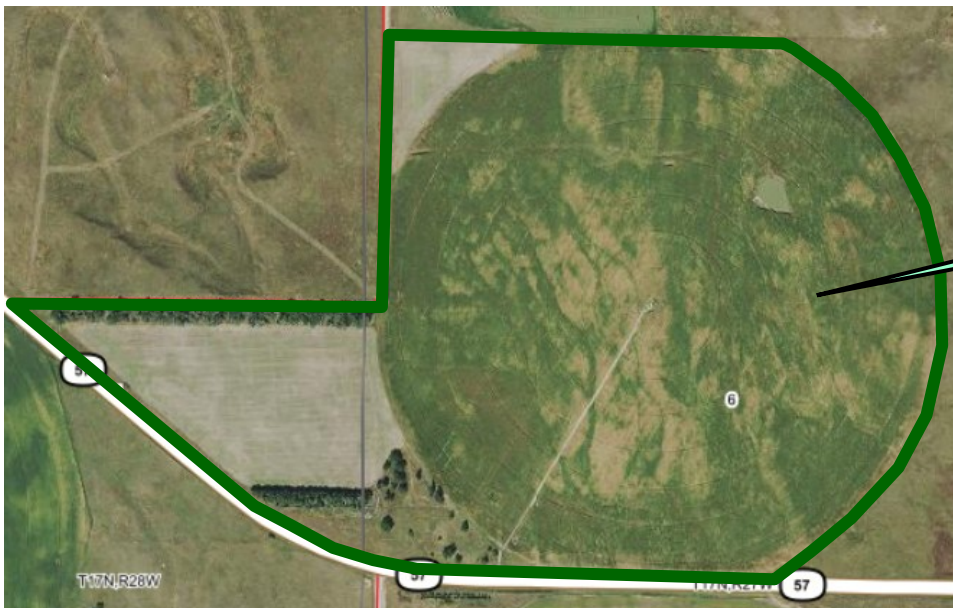
- Location:** D&L Pivots are located in west central Nebraska at Gandy, 3 miles east of Stapleton and 15 miles west of Arnold. The Pivots are just south of the South Loup River Valley, 30 miles northeast of North Platte.
- Acres & Taxes:** Parcel A: 174 tax assessed, deeded acres. 2019 taxes approximately \$5,500.  
Parcel B: 196 tax assessed, deeded acres. 2019 taxes approximately \$6,500.
- Land Use:** Parcel A includes 135 acres pivot irrigated; 27 dry cropland; and submersible livestock well. Parcel B has 166 acres pivot irrigated; 36 acres dryland cropland.
- Irrigation:** Parcel A has well G-166721 (48 foot pumping level) with John Deere diesel motor, generator and 2013 Zimmatic pivot. Parcel B has well G-038268 (83 foot pumping) with John Deere diesel, generator, plus Zimmatic (2013) and Gifford Hill windshield) pivots. There are 306 Certified Irrigated Acres in the Upper Loup NRD. Note that fertilizer tanks & pumps, plus Fieldnet system are owned by the Tenant.
- Comments:** The property does not include building improvements. Parcel A is 15% Class II soils, remainder Valentine sand; Parcel B 40% Class II&III with remainder Valentine sand. Zimmatic pivots are 2013 models.
- Price:** Parcel A \$775,000; Parcel B \$825,000.
- Contact:** **John Childears (308) 539-4450 / [john@agriaffiliates.com](mailto:john@agriaffiliates.com)**  
Dallas Dodson, Mike Polk, Brad Atkins, Tony Eggleston, Jerry Weaver,  
Don Walker, Bruce Dodson, Chase Dodson, Brian Reynolds  
**Agri Affiliates 308 - 534 - 9240 North Platte, Nebraska**



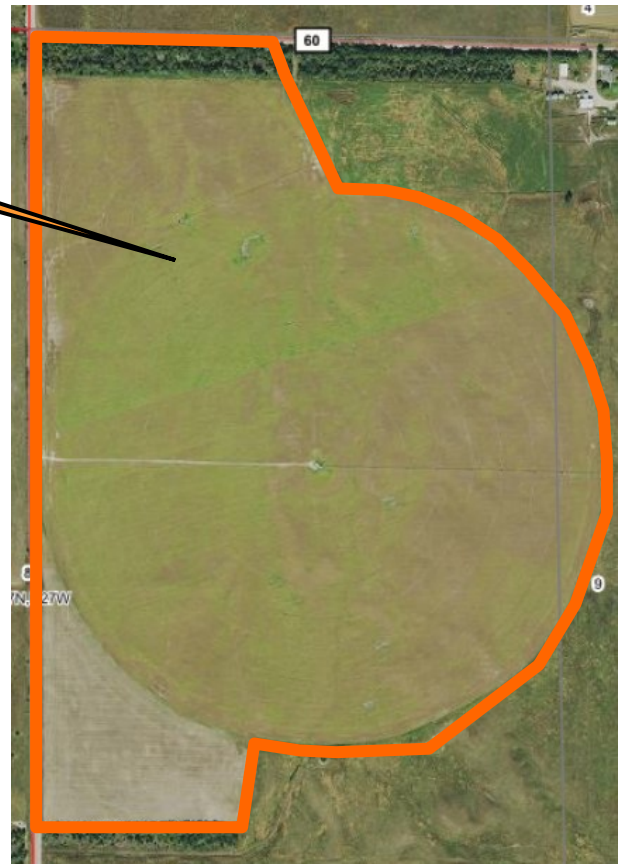
**AGRI AFFILIATES, INC.**  
*Providing Farm - Ranch Real Estate Services*







Parcel A



Parcel B

## D&L Pivots

### Contact:

**John Childears (308) 539-4450**

Dallas Dodson, Don Walker, Mike Polk, Jerry Weaver

Bruce Dodson, Tony Eggleston, Chase Dodson,

Brad Atkins, Brian Reynolds

*Offered Exclusively By:*



**AGRI AFFILIATES, INC.**  
*Providing Farm - Ranch Real Estate Services*

### **NORTH PLATTE OFFICE**

P.O. Box 1166

I-80 & US Hwy 83

North Platte, NE 69103

[www.agriaffiliates.com](http://www.agriaffiliates.com)

**(308) 534-9240**

Fax (308) 534-9244

Information contained herein was obtained from sources deemed reliable. We have no reason to doubt the accuracy, but the information is not guaranteed. Prospective Buyers should verify all information. All maps provided by Agri Affiliates, Inc. are approximations only, to be used as a general guideline, and not intended as survey accurate. As with any agricultural land, this property may include noxious weeds. Agri Affiliates, Inc. and all agents are acting as Agent of the Seller.

