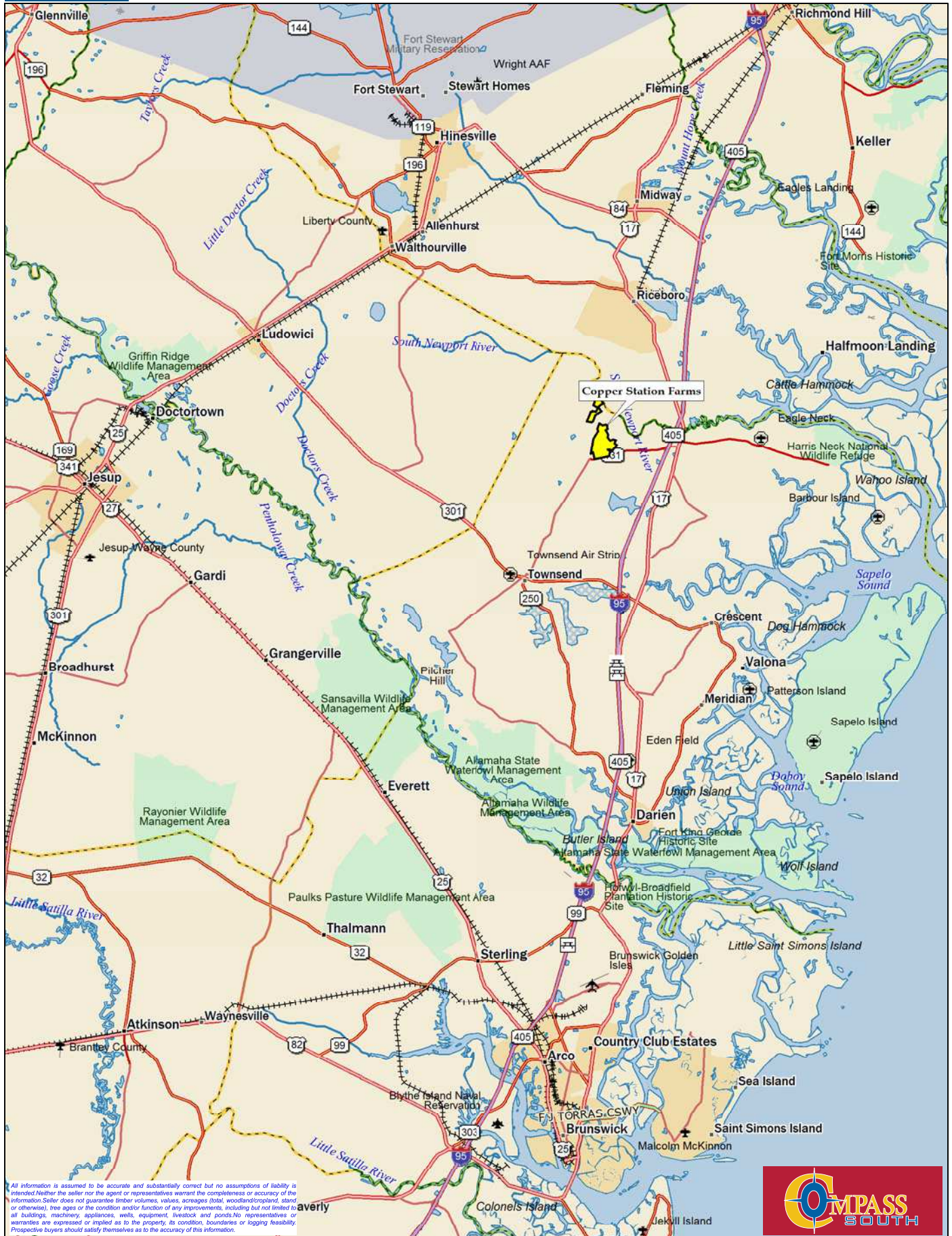


© DeLorme. XMap® 5.2 GIS Enterprise.

MN (6.7°W)

$$1'' = 15.78 \text{ mi}$$

Data Zoom 7-6

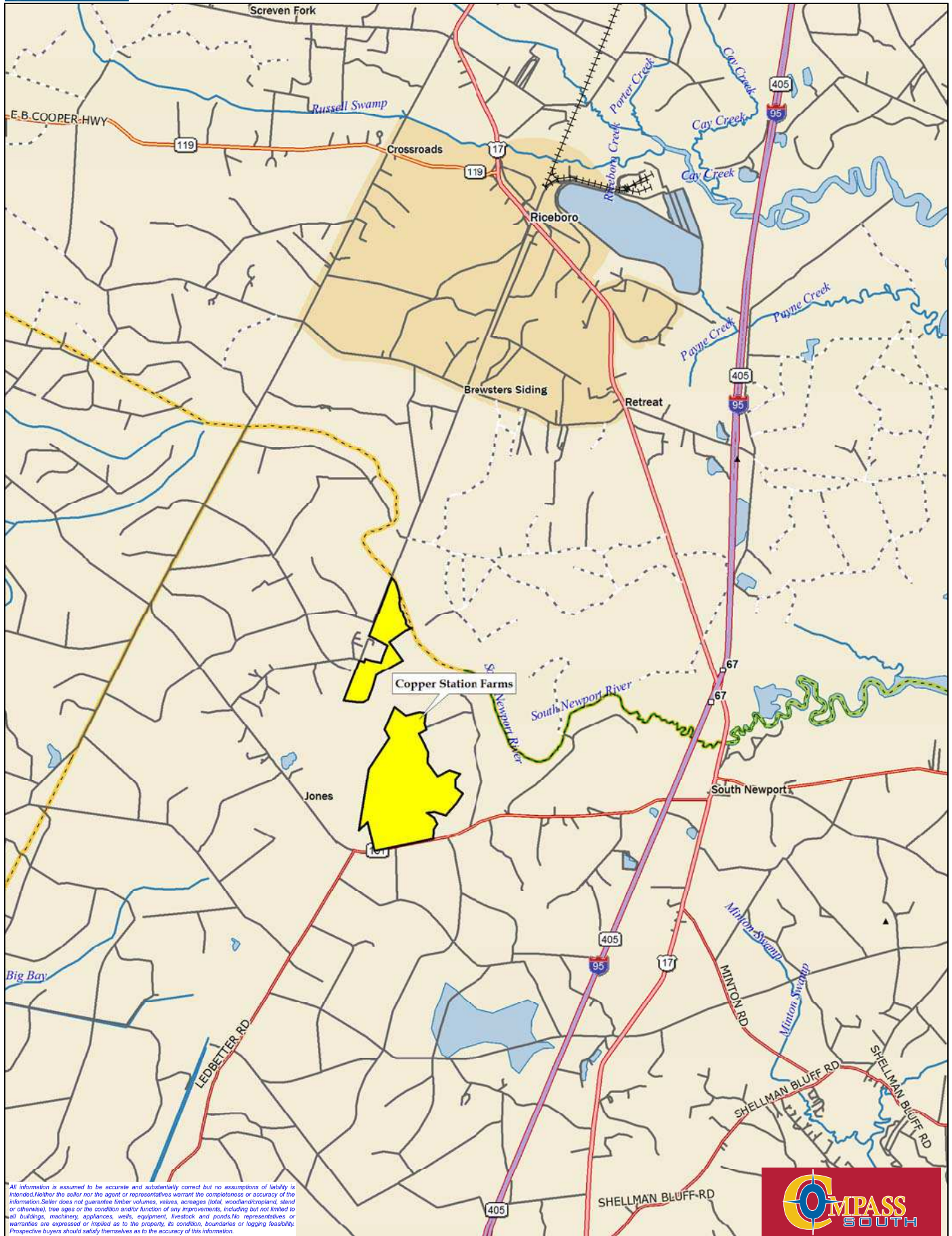


Data use subject to license.

© DeLorme. XMap® 5.2 GIS Enterprise.

www.delorme.com

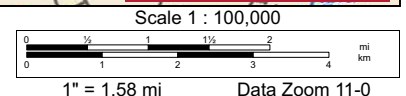
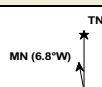




Data use subject to license.

© DeLorme. XMap® 5.2 GIS Enterprise.

www.delorme.com



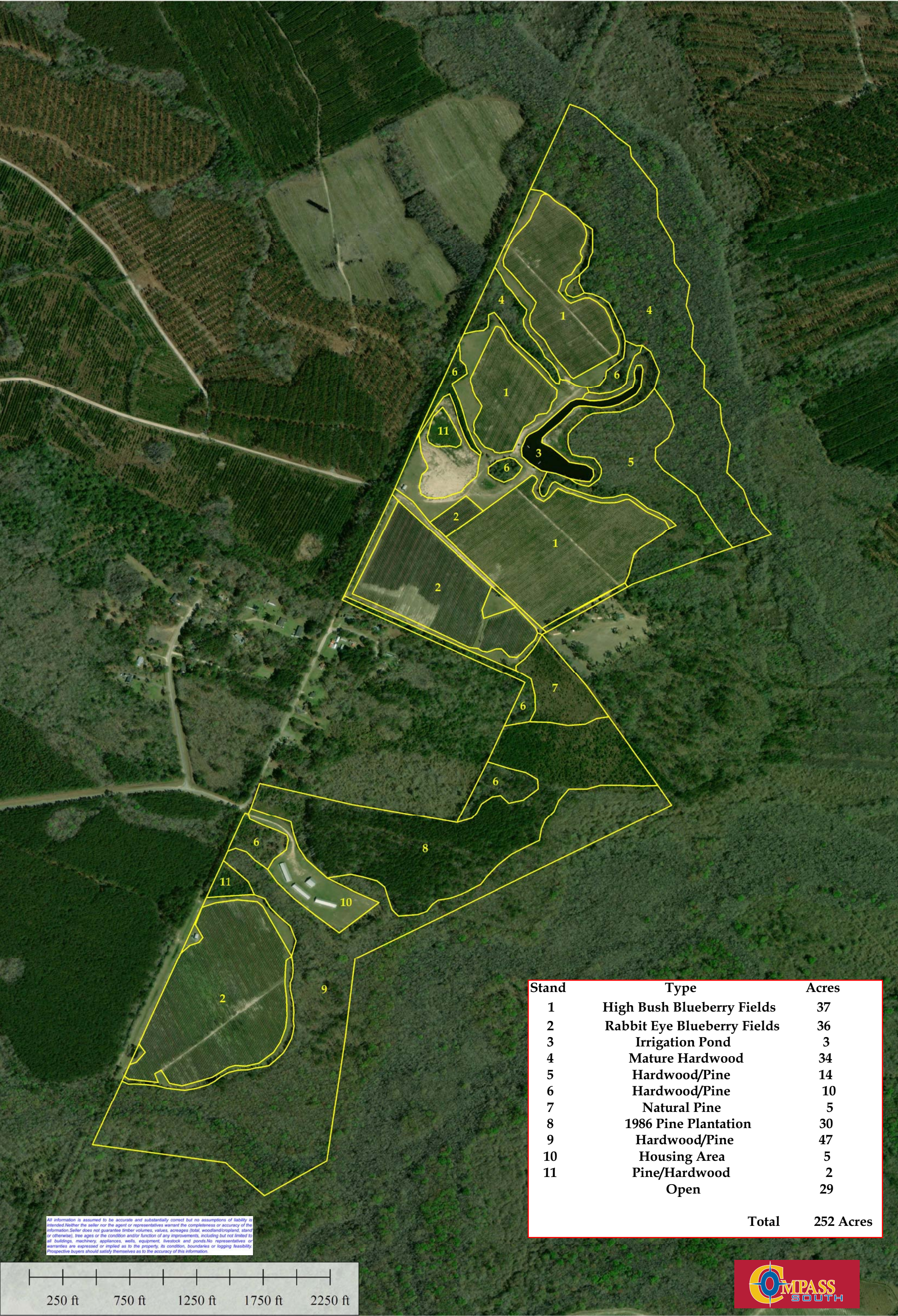
Copper Station Farm +/- 1,055 Acres



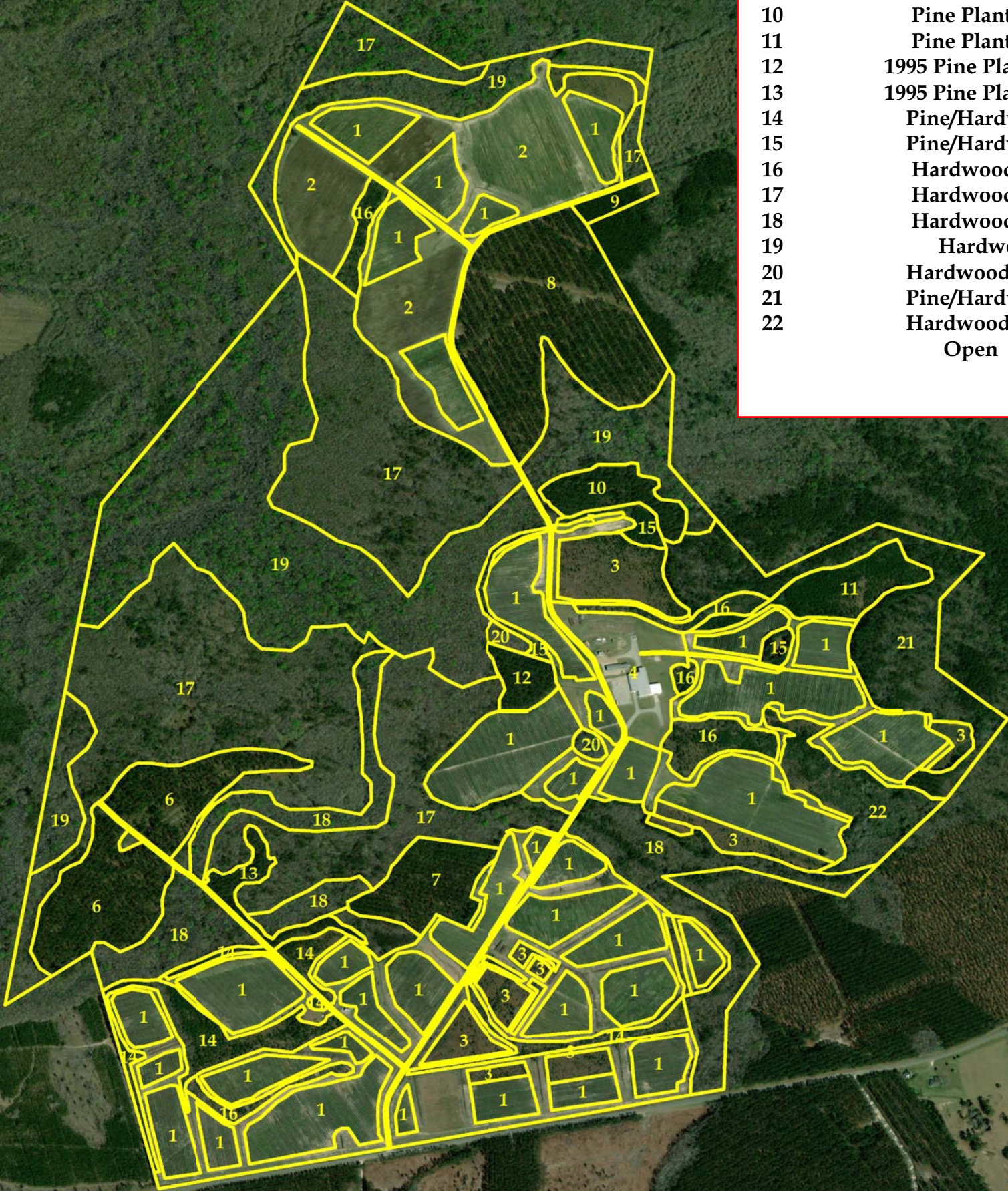
All information is assumed to be accurate and substantially correct but no assumptions of liability is intended. Neither the seller nor the agent or representatives warrant the completeness or accuracy of the information. Seller does not guarantee timber volumes, values, acreages (total, woodland/longland, stand or otherwise), tree ages or the condition and/or function of any improvements, including but not limited to all buildings, machinery, appliances, wells, equipment, livestock and ponds. No representatives or warranties are expressed or implied as to the property, its condition, boundaries or logging feasibility. Prospective buyers should satisfy themselves as to the accuracy of this information.



Copper Station Farm North Parcel +/- 252 Acres



Copper Station Farm South +/- 803 Acres



Stand	Type	Acres
1	Rabbit Eye Blueberry Fields	150
2	Open Productive	53
3	Open Productive / Nat Regen	23
4	Packing Complex	12
5	Irrigation Pond	1
6	1997 Pine Plantation	26
7	1997 Pine Plantation	10
8	2000 Pine Plantation	37
9	2000 Pine Plantation	2
10	Pine Plantation	6
11	Pine Plantation	9
12	1995 Pine Plantation	4
13	1995 Pine Plantation	4
14	Pine/Hardwood	18
15	Pine/Hardwood	5
16	Hardwood/Pine	13
17	Hardwood/Pine	149
18	Hardwood/Pine	44
19	Hardwood	114
20	Hardwood/Pine	2
21	Pine/Hardwood	30
22	Hardwood/Pine	12
	Open	79
Total		803 Acres

All information is assumed to be accurate and substantially correct but no assumptions of liability is intended. Neither the seller nor the agent or representatives warrant the completeness or accuracy of the information. Seller does not guarantee timber volumes, values, acreages (total, woodland/cropland, stand or otherwise), tree ages or the condition and/or function of any improvements, including but not limited to all buildings, machinery, appliances, wells, equipment, livestock and ponds. No representatives or warranties are expressed or implied as to the property, its condition, boundaries or logging feasibility. Prospective buyers should satisfy themselves as to the accuracy of this information.

