



3 RETRIEVER ROAD, WADMALAW ISLAND, SC

RECREATIONAL TRACT ON DEEP WATER WITH DOCK
22± acres of mature forest, cypress swamp and stunning views of Bohicket Creek. Great opportunity for a family compound or a large luxury home. Located in Rosebank Estates, a very private, low-density, waterfront community.

Recreational opportunities such as horseback riding, deer or turkey hunting, boating and fishing abound! Easy access to the ocean and beautiful custom dock with large pier, floater and four pilings for a boat lift makes this property perfect for an avid boater or sailor.



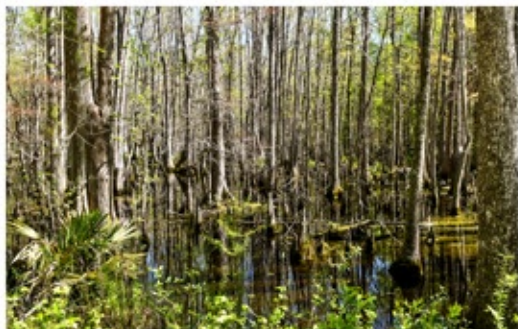
LOCATION

Charleston County
30 Minute Drive to Downtown Charleston
Zoned AG-15
Tax Map: 198-00-00-016

PROPERTY DETAILS

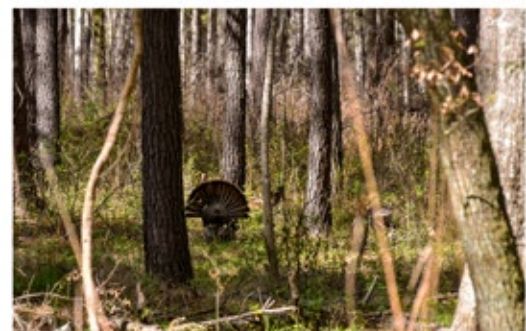
22.77 Acres
Deepwater Dock in Place
Pristine Marsh and Water Views

**NOW OFFERED AT
\$1,125,000**



3 RETRIEVER ROAD, WADMALAW ISLAND, SC

JOHNNY BEVON | JOHNNY@BEVONRE.COM | 843.478.5859
HUGER SINKLER II | HUGER@HFLCHARLESTON.COM | 843.412.3189



3 RETRIEVER ROAD, WADMALAW ISLAND, SC

JOHNNY BEVON | JOHNNY@BEVONRE.COM | 843.478.5859
HUGER SINKLER II | HUGER@HFLCHARLESTON.COM | 843.412.3189



PROPERTY BOUNDARIES

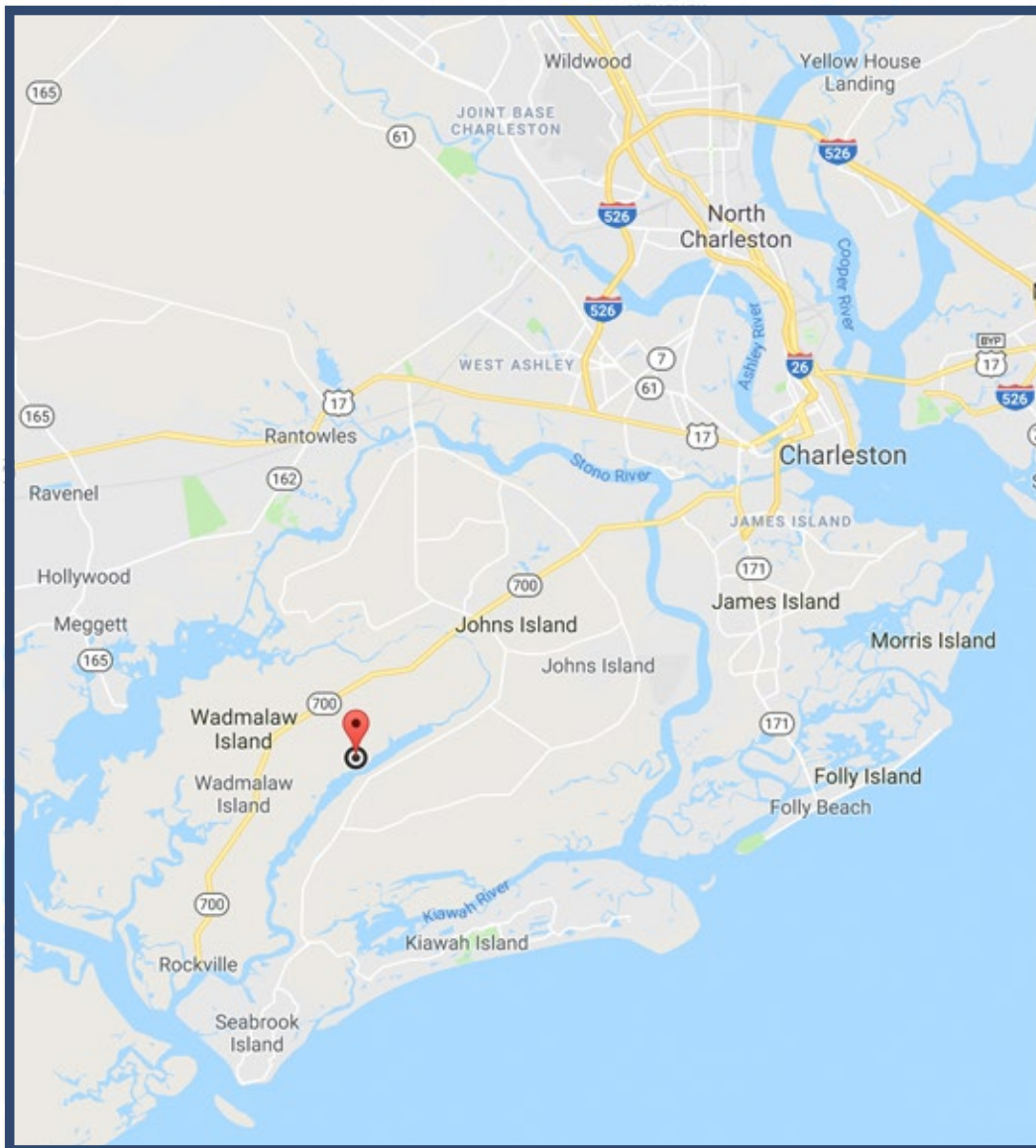


3 RETRIEVER ROAD, WADMALAW ISLAND, SC

JOHNNY BEVON | JOHNNY@BEVONRE.COM | 843.478.5859
HUGER SINKLER II | HUGER@HFLCHARLESTON.COM | 843.412.3189



PROPERTY LOCATION



3 RETRIEVER ROAD, WADMALAW ISLAND, SC

JOHNNY BEVON | JOHNNY@BEVONRE.COM | 843.478.5859
HUGER SINKLER II | HUGER@HFLCHARLESTON.COM | 843.412.3189