

- = CONCRETE RIGHT OF WAY MARKER
- = 1/2" REBAR FOUND UNLESS OTHERWISE NOTED
- = 1/2" REBAR SET

SURVEY FOR

MARC O. WALL

BEING IN LAND LOTS 769, 770, 785 AND 786 - 21ST DISTRICT
3RD SECTION - POLK COUNTY - GEORGIA

REC: 6132
DATE: 2-10-11
CHECK: 2330
TT:
PT:

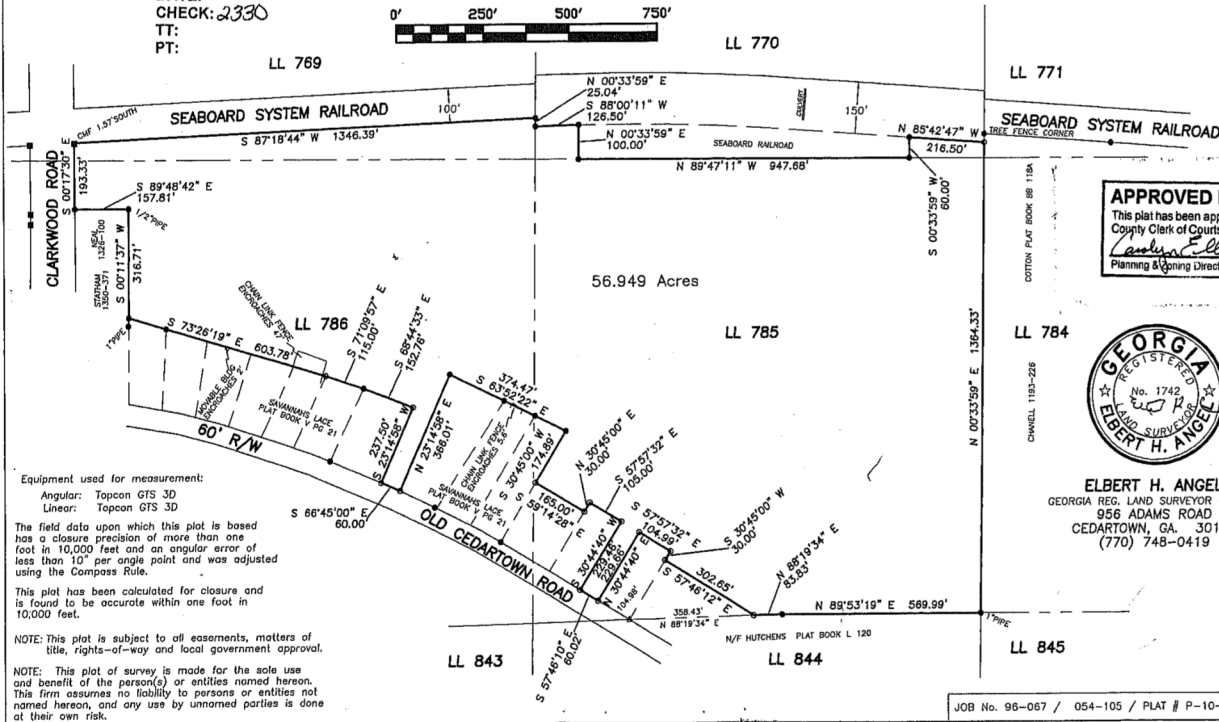
SCALE 1" = 250'

DECEMBER 8, 2010



Georgia, Polk County
Filed in Office this 12 day of Feb
20 11, at 3:08 Recorded in Book 124
Book 124 Page 131B

Shaila Wells, Clerk



Equipment used for measurement:

Angular: Topcon GTS 3D
Linear: Topcon GTS 3D

The field data upon which this plat is based has a closure precision of more than one foot in 10,000 feet and an angular error of less than 10" per angle point and was adjusted using the Compass Rule.

This plat has been calculated for closure and is found to be accurate within one foot in 10,000 feet.

NOTE: This plat is subject to all easements, matters of title, rights-of-way and local government approval.

NOTE: This plot of survey is made for the sole use and benefit of the person(s) or entities named hereon. This firm assumes no liability to persons or entities not named hereon, and any use by unnamed parties is done at their own risk.

APPROVED FOR RECORDING

This plat has been approved for recording in the Polk County Clerk of Courts Office
Date 2/19/2011
Planning & Zoning Director



ELBERT H. ANGEL
GEORGIA REG. LAND SURVEYOR - 1742
956 ADAMS ROAD
CEDARTOWN, GA. 30125
(770) 748-0419

JOB No. 98-067 / 054-105 / PLAT # P-10-060