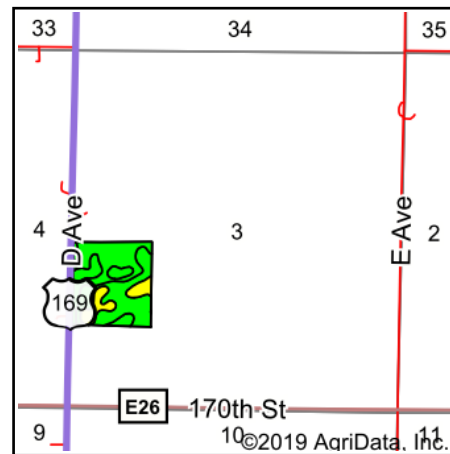
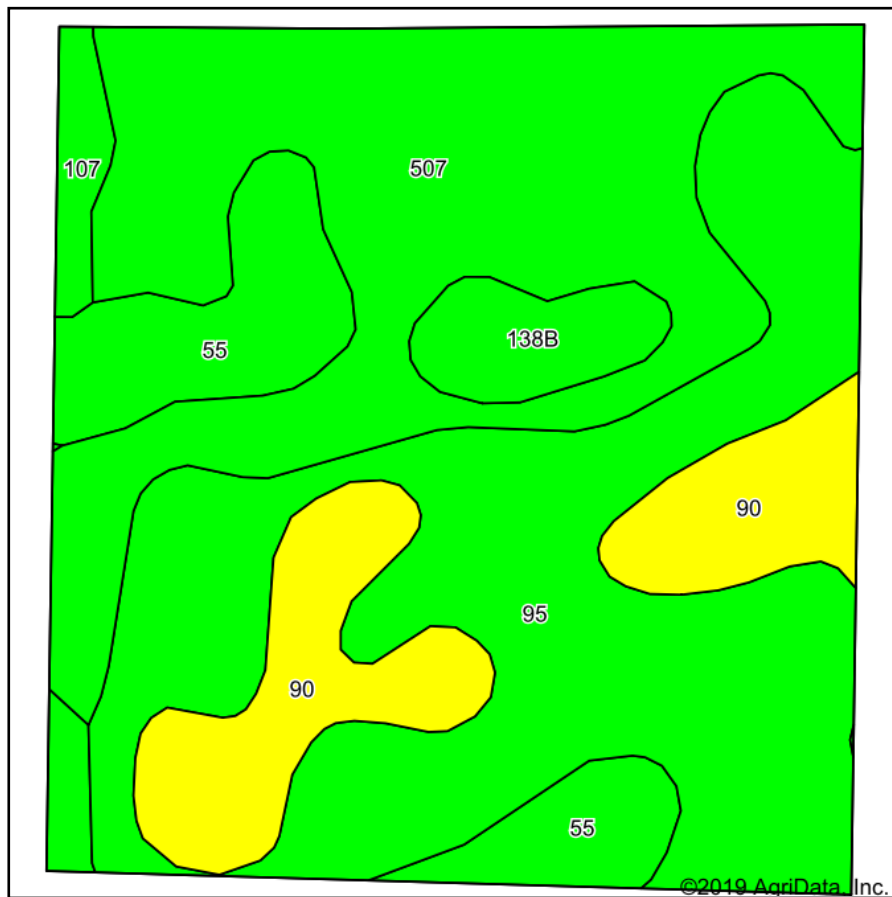


Tillable Soils Map



State: **Iowa**
 County: **Boone**
 Location: **3-84N-28W**
 Township: **Amaqua**
 Acres: **38.9**
 Date: **11/27/2019**

PC PEOPLES
 COMPANY
 INNOVATIVE. REAL ESTATE. SOLUTIONS.

Maps Provided By:

surety
 CUSTOMIZED ONLINE MAPPING
 © AgriData, Inc. 2019 www.AgriDataInc.com



| Area Symbol: IA015. Soil Area Version: 27 | | | | | | | | |
|---|--|-------|------------------|-------------|------------------|--------|------|------------------|
| Code | Soil Description | Acres | Percent of field | CSR2 Legend | Non-Irr Class *c | CSR2** | CSR | *n NCCPI Overall |
| 95 | Harps clay loam, 0 to 2 percent slopes | 14.84 | 38.1% | | IIw | 72 | 64 | 77 |
| 507 | Canisteo clay loam, 0 to 2 percent slopes | 12.66 | 32.5% | | IIw | 84 | 82 | 79 |
| 90 | Okoboji mucky silt loam, 0 to 1 percent slopes | 5.17 | 13.3% | | IIIw | 56 | 61 | 77 |
| 55 | Nicollet clay loam, 1 to 3 percent slopes | 4.17 | 10.7% | | Iw | 89 | 92 | 82 |
| 138B | Clarion loam, 2 to 6 percent slopes | 1.37 | 3.5% | | Ile | 89 | 84 | 83 |
| 107 | Webster clay loam, 0 to 2 percent slopes | 0.69 | 1.8% | | IIw | 86 | 87 | 80 |
| Weighted Average | | | | | | 76.4 | 73.6 | *n 78.5 |

**IA has updated the CSR values for each county to CSR2.

*n: The aggregation method is "Weighted Average using major components"

*c: Using Capabilities Class Dominant Condition Aggregation Method

Soils data provided by USDA and NRCS.