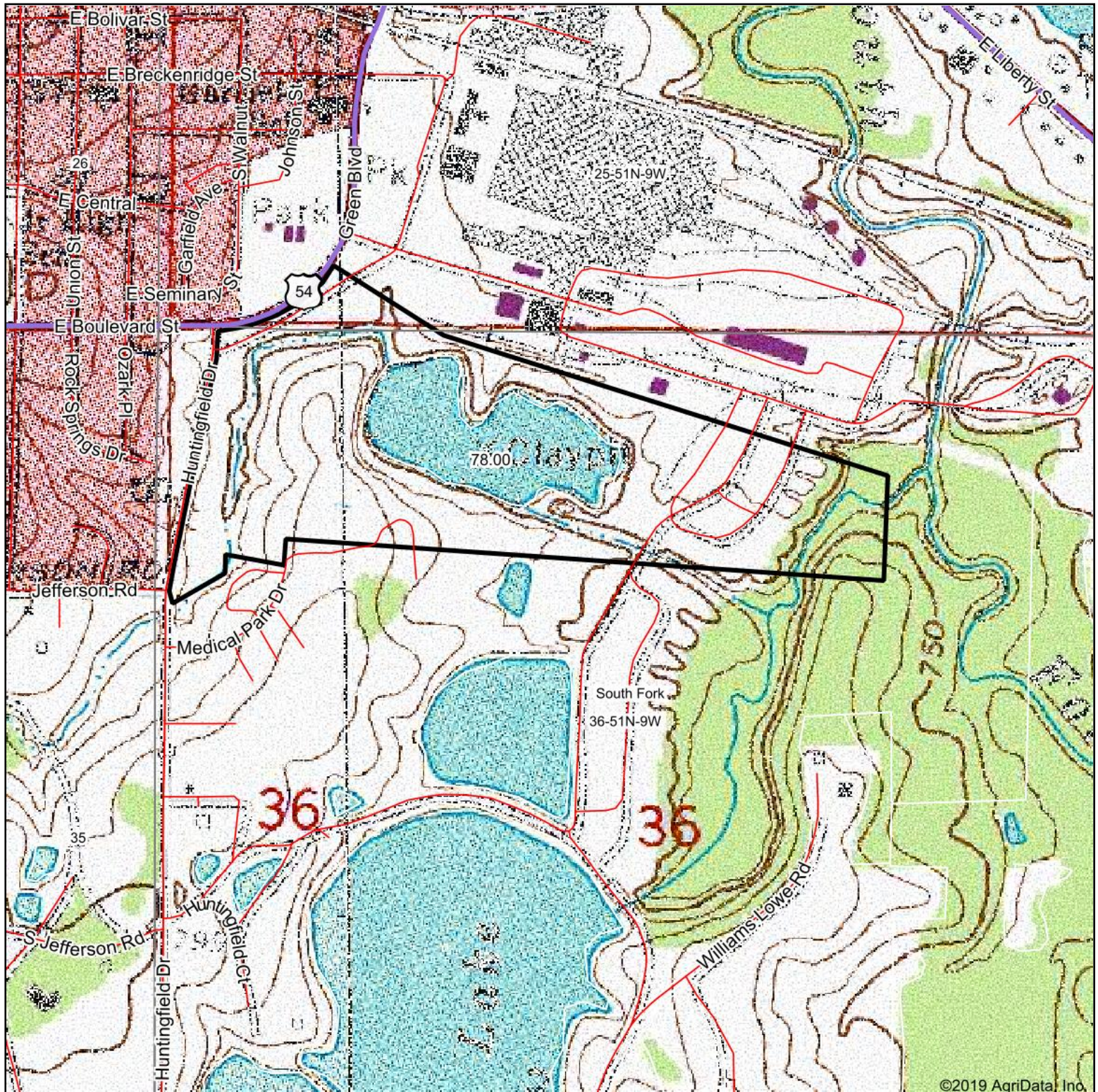


Topography Map



Maps Provided By:



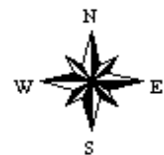
© AgriData, Inc. 2019

www.AgriDataInc.com

map center: 39° 9' 36.18, -91° 52' 17.24

0ft 791ft 1581ft

36-51N-9W
Audrain County
Missouri



1/27/2020

Field borders provided by Farm Service Agency as of 5/21/2008.