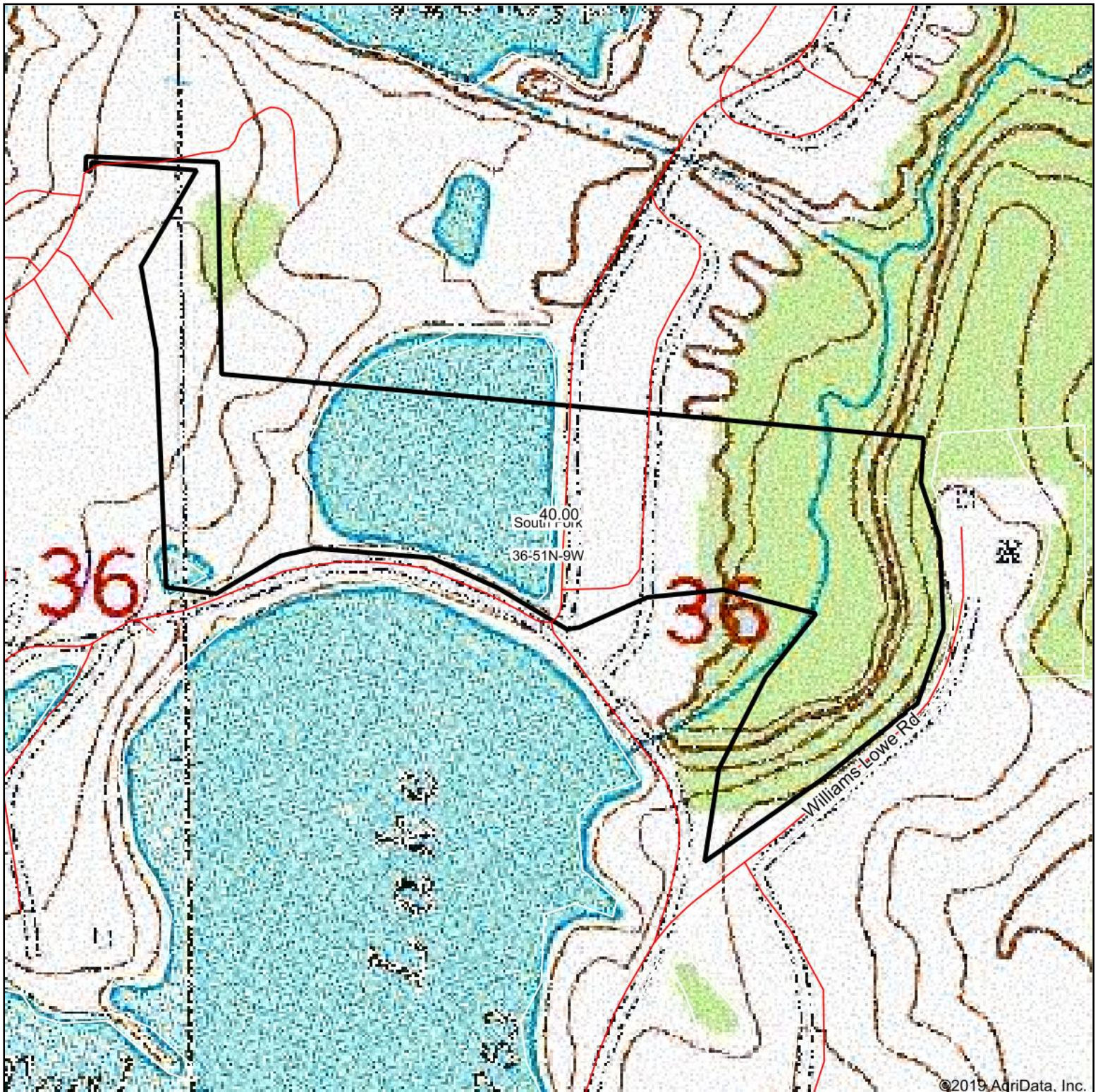


Topography Map



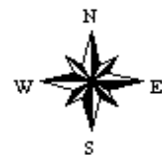
map center: 39° 9' 24.22, -91° 52' 16.28

0ft 479ft 958ft



36-51N-9W
Audrain County
Missouri

Maps Provided By:
 **surety**
CUSTOMIZED ONLINE MAPPING
© AgriData, Inc. 2019 www.AgriDataInc.com



1/27/2020