

MONROE COUNTY

LEVEE ROAD • FULTS, ILLINOIS 62244

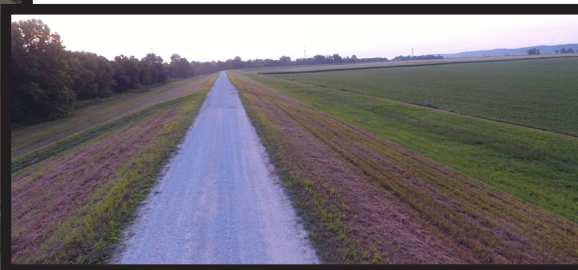
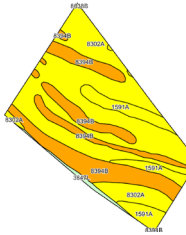
111.02 ACRES M/L

PRICE: \$777,140 PRICE PER ACRE: \$7,000



TILLABLE SOILS MAP

Code	Soil Description	Acres	Percent of Field	Legend	Crop Productivity
8302A	Ambrow silty clay loam	57.69	56.8%		114
8394B	Haynie silt loam	30.33	29.9%		118
1591A	Fults silty clay	11.89	11.7%		115
3847L	Fluvaquents-Orthents complex	1.58	1.6%		N/A
Weighted Average					113.5



LISTING #14831

DESCRIPTION:

Offering 111.02 acres m/l of highly tillable, levee protected farm ground near Fults, Illinois. This farm consists of 101.49 FSA tillable acres carrying a PI of 113.5. Primary soil types include Ambrow silty clay loam, Haynie silt loam and Fults silty clay. Farm is located just northwest of Fults along Levee Road in section 5 of Precinct 13 Township, Monroe County, IL.

FARM DETAILS:

FSA Cropland Acres: 101.49

Corn Base: 39.19 Acres with a PLC Yield of 140

Soybean Base: 72.69 Acres with a PLC Yield of 43

Wheat Base: 10.82 Acres with a PLC Yield of 50

*Farm Program Information is currently combined with additional acres. Base Acres will be adjusted per the default method when the farm is reconstituted by the Monroe County FSA Office.

DIRECTIONS:

From Fults, IL: Travel southwest along Ivy Road approximately 2.25 miles to Levee Road. Turn left onto Levee Road and continue approximately 1.7 miles. Farm is situated on the northeast side of Levee Road.

TRAVIS SMOCK 319.361.8089
Travis@PeoplesCompany.com



PeoplesCompany.com