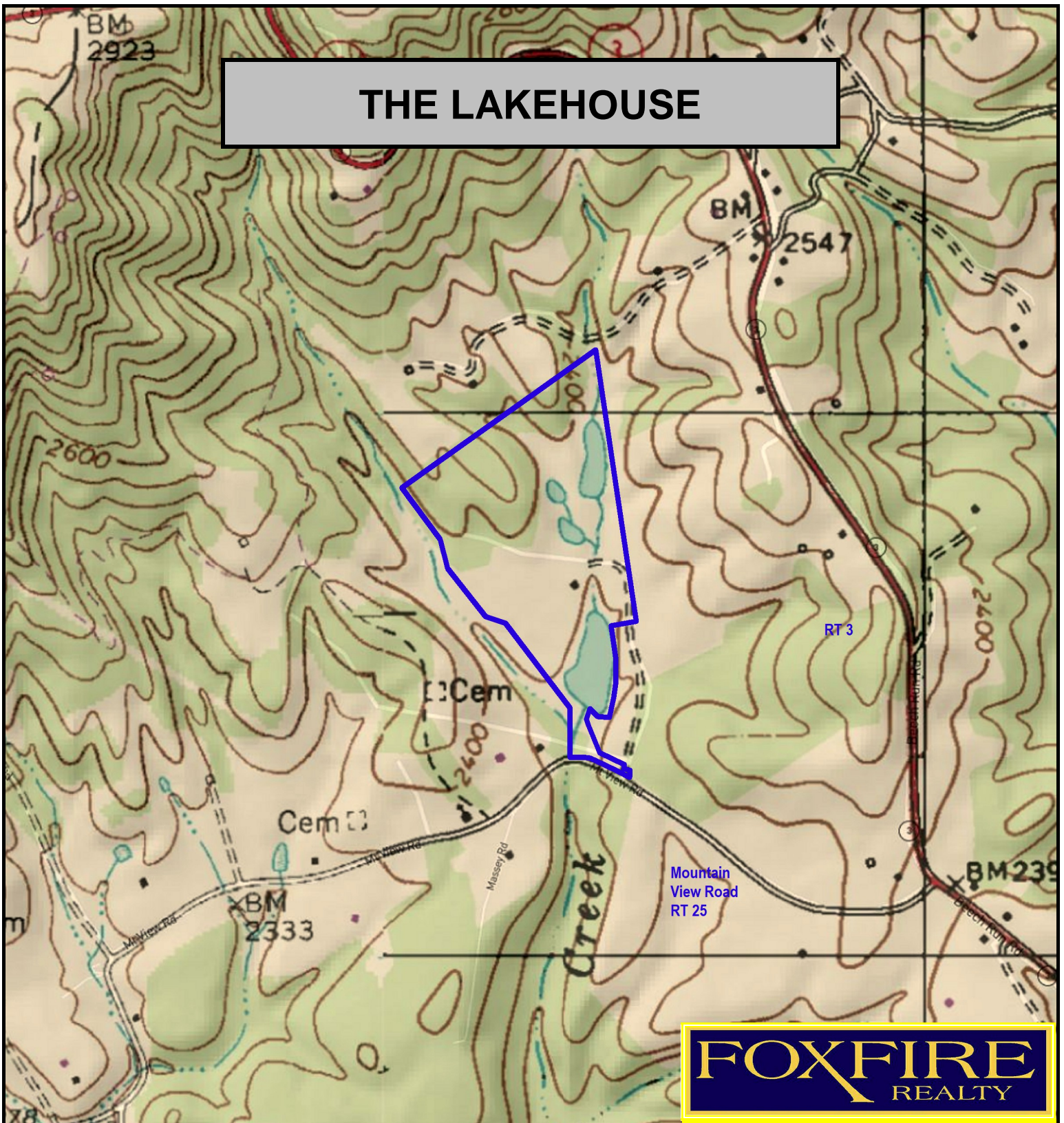


# THE LAKEHOUSE



**FOXFIRE**  
REALTY



THE LAKEHOUSE, Summers County, WV (topographic map)  
Elevation Range: 2384' - 2467' +/- Google Coordinates:  
LAT 37.664456 (N), LON -80.995507 (W)  
This map is for general location purposes only. Consult a licensed  
land surveyor for actual boundary location and acreage.

RICHARD GRIST, Broker - Auctioneer - Forester  
304.646.8837 Richard@Foxfirenation.com  
[WWW.FOXFIRENATION.COM](http://WWW.FOXFIRENATION.COM)

FOR TOPO MAP

SCALE 1:9600

1 INCH = 800 FT.

